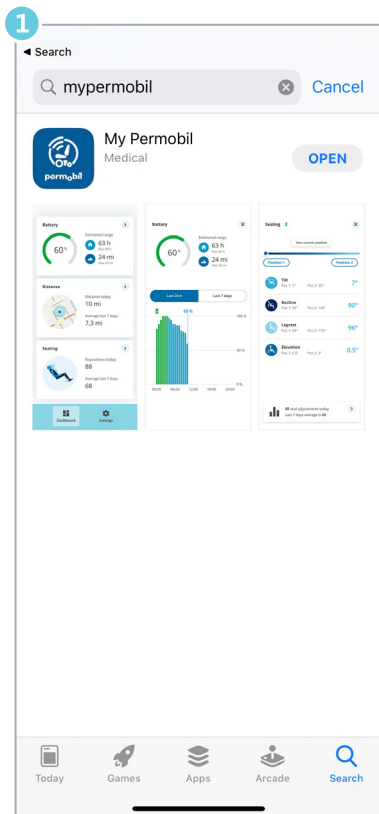


MyPermobil—Activation Process

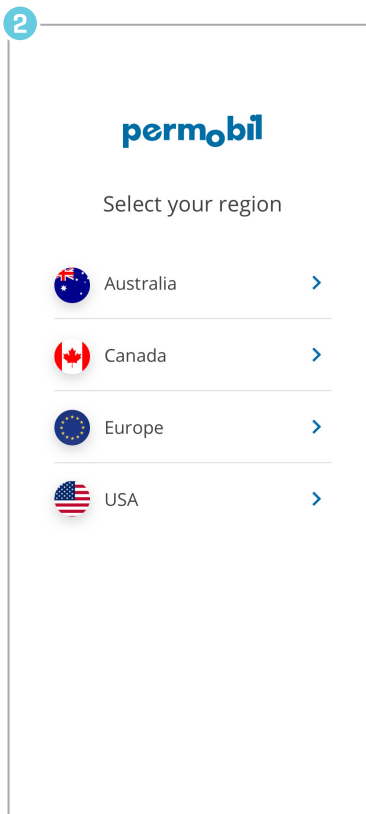


NOTE: WiFi and email access is required for set-up

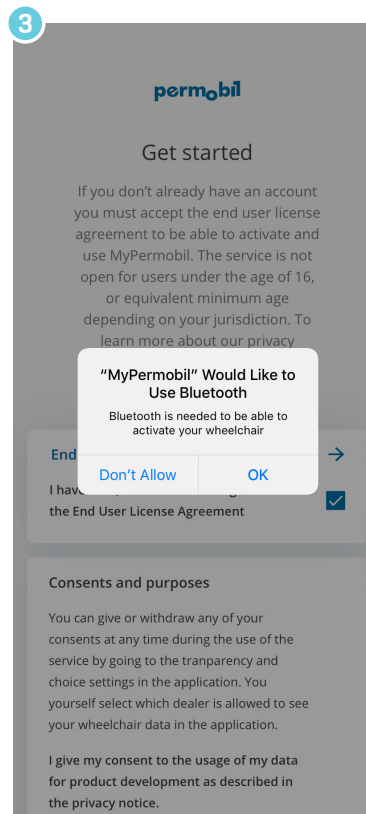
Getting started



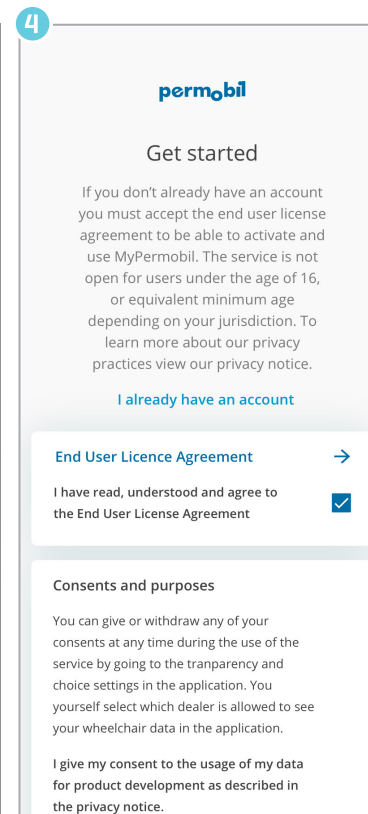
Download *MyPermobil* on your Android or Apple phone



Choose your region



Accept to allow Bluetooth™



Read/accept MyPermobil policy



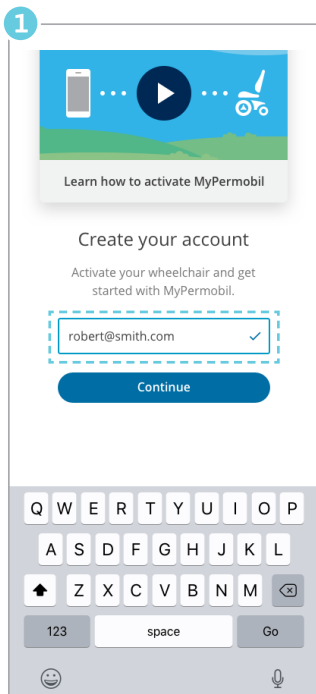
MyPermobil



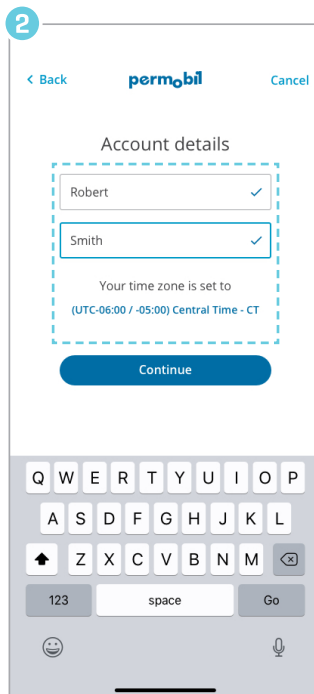
MyPermobil—Activation Process

NOTE: WiFi and email access is required for set-up

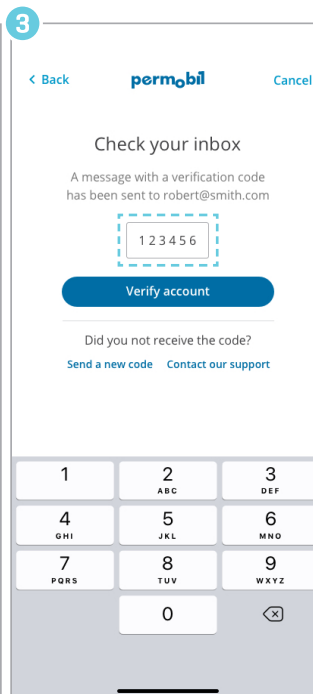
Create account



Enter email address

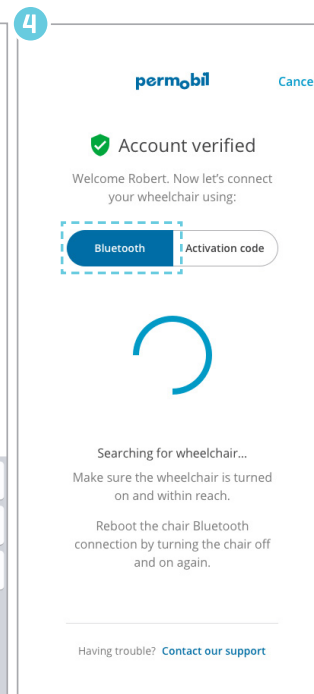


Enter your name and set time zone



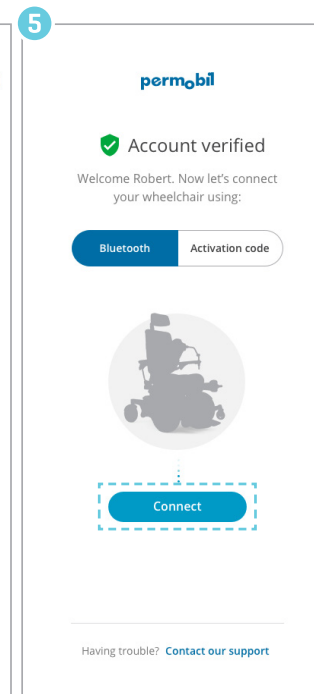
Find code in email, enter it and hit "Verify account"

Activate

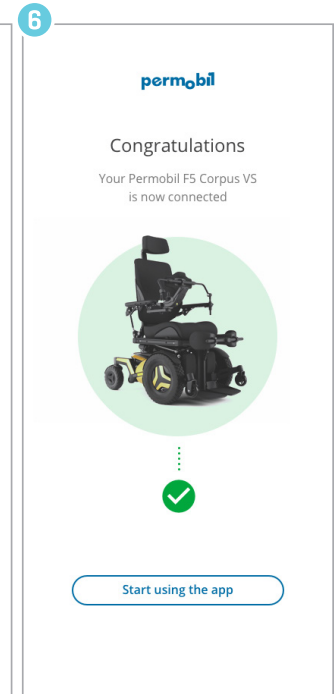


Select Bluetooth and turn on your wheelchair

If your wheelchair is already on, turn it off and on again in order to reboot Bluetooth connection



Click on the Connect button



You are connected!