

Provider set up guide

PushTracker E2 & SwitchControl

permobil





Choose to do more

SmartDrive was designed to seamlessly integrate an on-demand power assist for manual wheelchair users, and now provides more control over their mobility than ever before.

The PushTracker E2 and SwitchControl work separately or together to give users customizable ways to control their SmartDrive, track its impact and gain insights to improve their mobility needs. And, the original PushTracker is still available for those who prefer that as their way for controlling SmartDrive.

What control option is best for your client?

Does your client prefer the most advanced tech?

Does your client have a smart phone?

Does your client need a simple control method?

Does your client adjust well to new/different technologies?

How to set up the PushTracker E2

The PushTracker E2 requires a smart phone for set up, and will have to be configured by dealer, clinician, Permobil rep, or the client. The set up that is done upfront is well worth the improvements from the PushTracker E2 upgrade and may even take less time than the original PushTracker once you are familiar with it.

Set up: Things to consider

1. Set up time will be dependent upon access to and quality of Wi-Fi
2. Set up time should take 25-35 minutes the first few times
3. Set up time will get faster with practice
4. Your client will have to have a Google account to perform set up
5. You (e.g. dealer location) should create your own Google account to manage your demos
6. All settings, including SwitchControl options, can be changed through the PushTracker E2

Did you know?

E2 has 8x stronger Bluetooth connection and more durability, which means better experiences for your customers and less service calls for you.

Suggested set up for dealers

- 1 Schedule delivery**
 - Contact user to download Wear OS to their phone and set up Google account
 - Schedule delivery where there is good Wi-Fi or where you can reliably use your mobile hot spot
- 2 Before delivery**
 - Unbox the PushTracker E2 and fully charge the battery
- 3 At delivery**
 - Perform Wear OS set up with PushTracker E2 on charger
 - Remove PushTracker E2 from charger after Wear OS set up
 - Ensure PushTracker E2 is connected to Wi-Fi
 - Download SmartDrive MX2+ app from the Google Play store
 - Pair/Connect E2 to SmartDrive
 - Perform SmartDrive training
 - Instruct client to charge overnight on Wi-Fi to make sure the E2 performs automatic updates

PushTracker E2 – Intial setup

NOTE: WiFi is required

1 PushTracker E2 & Wear OS

- 1

Download *Wear OS* on your Android or Apple phone
- 2

Read/accept Google terms of service & enable Bluetooth® sharing
- 3

Turn on watch, select language
- 4

Read/accept Mobvoi policy
- 5

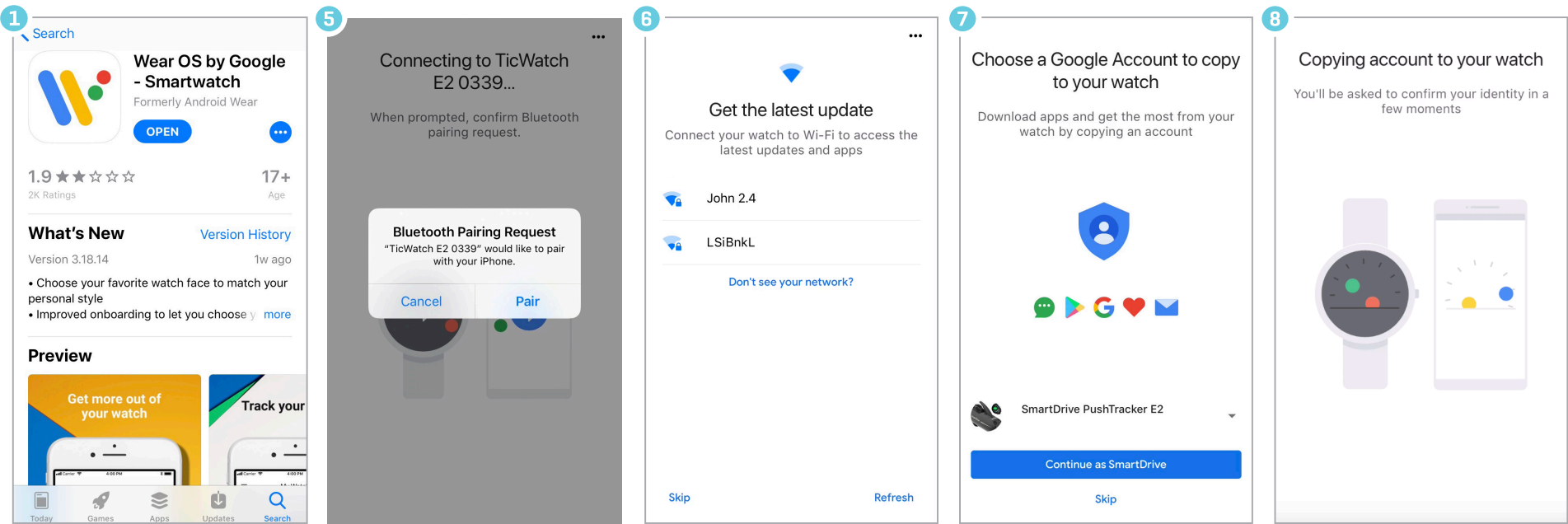
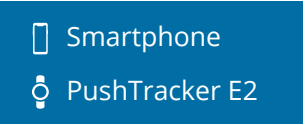
Pair/connect PushTracker E2 to phone
- 6

Connect your watch to WiFi
- 7

Choose/sign in/create Google account
- 8

Initialization
- 9

Wear OS tutorial

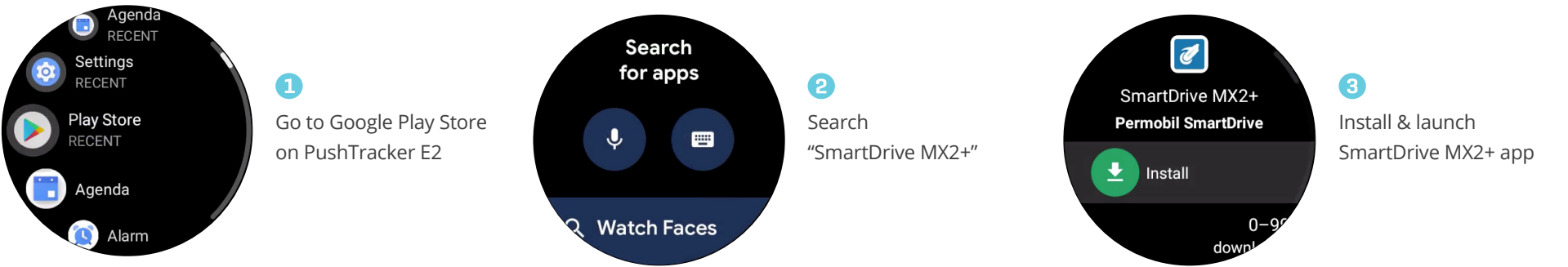


NOTE: For demos or anyone ordering a PushTracker E2 to retrofit onto their existing SmartDrive MX2+, the firmware needs to be updated to achieve full functionality. Follow the steps above, then use your PushTracker E2 to update your SmartDrive MX2+ unit.

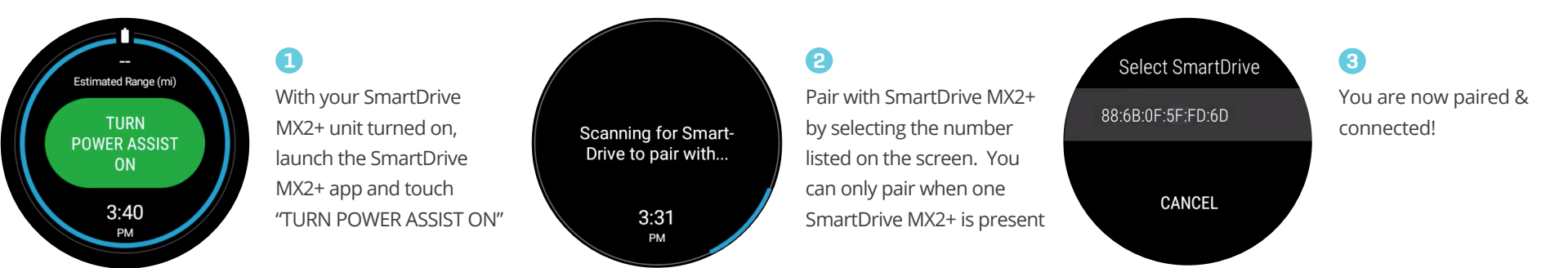
SmartDrive MX2+ app & pairing/connecting

NOTE: WiFi is required

2 The SmartDrive MX2+ app & Pairing/Connecting



3 Pair & go



NOTE: You can also pair to your SmartDrive MX2+ through the settings menu within the app.

*Wear OS by Google, iPhone, Android, Bluetooth and Google Play are trademarks or registered trademarks of their respective owners.

Battery performance tips

The PushTracker E2 has been thoroughly tested and under average usage (i.e. 2 miles distance at 3 MPH) with the SmartDrive MX2+ it should last approximately 16 hours. As with any smart device the battery performance is highly dependent on use and a variety of other factors, especially system updates. Below are some considerations on how you can help your client get the most out of their battery.

1. During initial setup

- Fully charge the battery prior to set up and first use
- Check to make sure the PushTracker E2 has the most up to date operating system. Perform all updates on the charger before use: **Settings App > System > About > System Updates**
- Turn off “location” setting: Settings App > Location
- Select a dark watch theme (less bright colors) to save some battery

2. Other battery performance options:

- Turn off the “always-on” display: **Settings App > Display > Always-on Screen**
- Turn off “tilt-to-wake” & “wrist gestures”: **Settings App > Gestures**
- Turn off Wi-Fi when not in use (otherwise it will continually search for networks): **Settings App > Connectivity > WiFi**
- Maintain a screen brightness of level 3 or less when possible: **Settings App > Display > Adjust Brightness**
- Turn “OK Google” off: **Personalization > OK Google Detection**
- Turn on “airplane mode”. The PushTracker E2 will prompt you to reconnect Bluetooth when going to use your SmartDrive






Did you know?
On March 16th, 2020 we rolled out a programmable “timeout function” that automatically disconnects an inactive E2 to improve battery performance.

Power your push, your way

In the complex rehab industry, there is no single solution that works for all wheelchair users. There’s simply too much diversity in the people we work with for one solution to work well for everyone.

SmartDrive now comes with a range of controls so that you can help provide more independence to more of your customers with this game-changing technology. You, the therapist, and the client choose what’s best for the client.

SwitchControl now comes standard at no charge with every SmartDrive and the original PushTracker is still available for those who need it. Order forms have been updated to reflect most recent changes.

	Low tech	Mid tech	High tech
SwitchControl only *			
Original PushTracker & SwitchControl			
PushTracker E2 & SwitchControl			


NOTE: * When SwitchControl is selected alone, use the new PushTracker app to change all the settings. 

SwitchControl programming options

SwitchControl (formerly known as the “thumb throttle”) gives users another customizable option for controlling their SmartDrive and is included free of charge with every SmartDrive. With the push of a button SmartDrive can be engaged for a momentary burst of power or activated in latched mode for consistent power over extended distances. The speed can also be programmed to the user’s needs or preferences. This empowers a more diverse user population to experience SmartDrive with increased confidence and when paired with the PushTracker E2, offers added flexibility, convenience and control options.

Separate setting than PushTracker/E2		
Set your speed	1-5.5mph/1.6-8.9kph	Separate setting than PushTracker /E2
Set your mode	Momentary: Press to Go	Latched: Hold & Set

Mobility considerations for SwitchControl		
Propulsion Technique	Mode options	Specific functional activity
Bilateral Upper Extremity	Momentary alone	Ramps/Inclines
Bilateral Lower Extremity	Latched alone	Indoor Mobility
Hemi-Propulsion	Momentary with PushTracker/E2	Crowded Spaces
Dependent/Caregiver operated	Latched with PushTracker/E2	Short Distances
		Quick/Short Surface Change
		Low/No PushTracker Battery

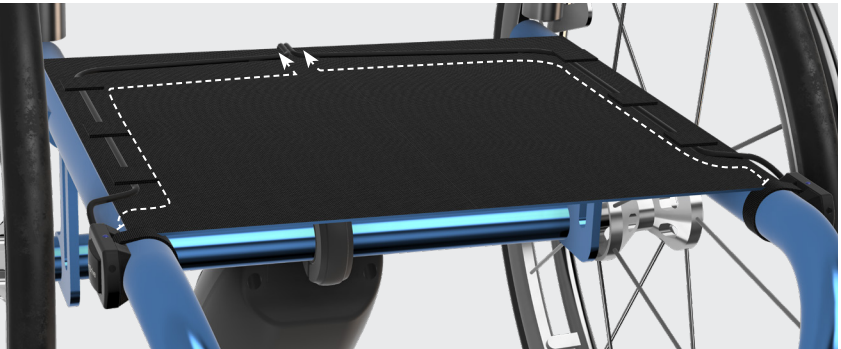
NOTE: When SwitchControl is selected alone, use the new PushTracker app to change all the settings. 

How to install SwitchControl on the wheelchair

Attach the SwitchControl buttons are easily mounted to each side of the wheelchair frame so the client can use without removing their hands from the hand rims. Attached the button to the frame with the LED light facing up by using the velcro provided. Be sure the cables don't stick out avoiding any contact with the wheel. The cable can be pulled apart to the desired split location (preferably at the rear of the seat).

Rigid

1. Use velcro strips to strap down cables on seat
2. Place cushion over cables
3. Install metal clamp for connector when not attached to SmartDrive
4. Extra cable can be managed under seat cushion



Folding

1. Use provided tie-straps to route cable along the frame tube and out the rear of the wheelchair
2. Be sure to leave enough slack to allow the cables to fold up with the WC
3. Cable can be left dangling out the back of chair when not in use



permobil