

**BROCHURE**



**AFC**  
CABLE SYSTEMS®

**MC LUMINARY CABLES®**

MC Luminary HCF™ • MC Luminary Multizone™ • MC Tuff Luminary Cable®  
MC Lite Luminary Cable® • MC Luminary® Jacketed Cable • MC Luminary® Quik • Luminary Fixture Whips

**WHAT A BRIGHT IDEA!**

A PART OF



# What a Bright Idea!

## MC Luminary Cable Products

In 2014, AFC was the first to commercialize Metal Clad (MC) Cable with both power and control circuits under one armor - MC Luminary. AFC is expanding our MC Luminary offering to include both an HCF version for patient care applications, as well as another industry first, a complete line of multi-zone lighting cable configurations.

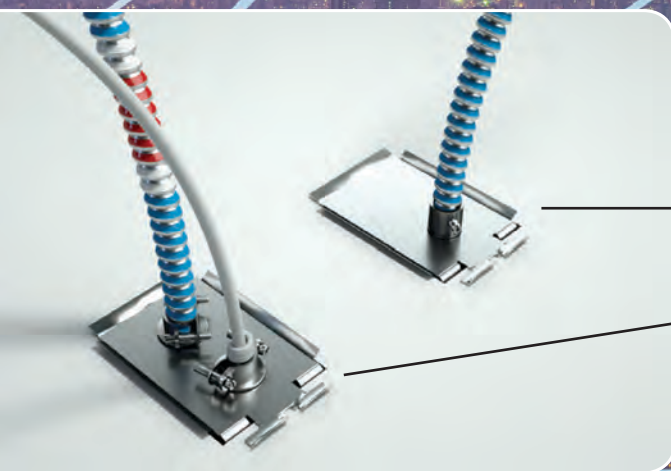
In 2018, AFC expanded this product offering again to Luminary Whips (Page 5) for fixture whip applications, and also MC Luminary® Quik (Page 6) for additional labor savings.

### Dimmable Lighting



### MC Luminary Cable®

- 💡 Combines power and control circuits under a single interlocked armor
- 💡 Reduces installation time and materials on the job site
- 💡 Designed for LED and fluorescent dimming systems
- 💡 Available in jacketed MC Luminary® for direct burial or concrete encasement applications
- 💡 Patent Pending



### Before and After

- 💡 MC Luminary® Cable Installation
- 💡 Traditional Power and Control

*Celebrating Over 90 Years*



**AFC**

CABLE SYSTEMS®

*Since 1926*

# MC LUMINARY LITE® CABLE \*U.S. Patent Pending

Type MC-PCS

## ARMOR

Interlocking Aluminum Strip (Plain armor)

## CONDUCTORS

Solid/Stranded Copper

## CONDUCTOR INSULATION

THHN (Power)

TFN (Control)

## MAXIMUM TEMPERATURE RATING

90°C (Dry)

## NEUTRAL CONDUCTOR

White 120/208V

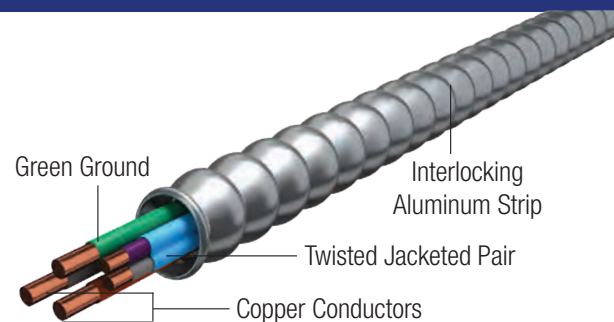
Gray 277/480V

## CONTROL CABLES

16 AWG Solid TFN Twisted Blue jacketed pair (Purple/Gray)

## MAXIMUM VOLTAGE RATING

600V



## REFERENCES & RATINGS

- UL 66, 83, 1479, 1569, 1581, 2556, File Reference E80042
- NEC® 250.118, 300.22(C), 392, 396, 330, 501, 502, 503, 530, 504, 505, 518, 520, 530, 645, 725
- Federal Specification A-A-59544 (formerly J-C-30B)
- Meets all applicable OSHA and HUD Requirements
- May be surfaced mounted, fished and/or embedded in plaster
- Cable Tray Rated, install per NEC®
- UL Classified 1, 2, and 3 hour through penetration (Fire Stop) product, R14141
- Environmental Air-Handling Space Installation per NEC® 300.22(C)
- Power and/or lighting as well as signal and/or control conductors per NEC Section 725.136(I)(1)
- Made in USA of US and/or imported materials

PRODUCT CODE		TRADE SIZE	LENGTH (ft)		APPROX. WEIGHT lbs/1,000ft	APPROX. ARMOR O.D. inches
Coil	Reel		Coil	Reel		
<b>SOLID</b>						
18BF-42-500	18BF-60-500	16-2 (1TPJ) Purple, Gray 12-2 Black, White, Green	250	1000	156.3	0.626
18BF-42-504	18BF-60-504	16-2 (1TPJ) Purple, Gray 12-2 Red, White, Green	250	1000	156.3	0.626
18BF-42-505	18BF-60-505	16-2 (1TPJ) Purple, Gray 12-2 Blue, White, Green	250	1000	156.3	0.626
18BF-42-501	18BF-60-501	16-2 (1TPJ) Purple, Gray 12-2 Brown, Gray, Green	250	1000	156.3	0.626
18BF-42-502	18BF-60-502	16-2 (1TPJ) Purple, Gray 12-2 Orange, Gray, Green	250	1000	156.3	0.626
18BF-42-503	18BF-60-503	16-2 (1TPJ) Purple, Gray 12-2 Yellow, Gray, Green	250	1000	156.3	0.626
18BG-42-500	18BG-60-500	16-2 (1TPJ) Purple, Gray 12-3 Black, Red, White, Green	250	1000	182.6	0.653
18BG-42-501	18BG-60-501	16-2 (1TPJ) Purple, Gray 12-3 Brown, Orange, Gray, Green	250	1000	182.6	0.653
18BH-42-500	18BH-60-500	16-2 (1TPJ) Purple, Gray 10-2 Black, White, Green	250	1000	201.7	0.670
18BH-42-501	18BH-60-501	16-2 (1TPJ) Purple, Gray 10-2 Brown, Gray, Green	250	1000	201.7	0.670
<b>STRANDED (16-2 SOLID)</b>						
18SF-42-500	18SF-60-500	16-2 (1TPJ) Purple, Gray 12-2 Black, White, Green	250	1000	159.2	0.641
18SF-42-501	18SF-60-501	16-2 (1TPJ) Purple, Gray 12-2 Brown, Gray, Green	250	1000	159.2	0.641
18SI-42-500	18SI-60-500	16-2 (1TPJ) Purple, Gray 12-3 Black, Red, White, Green	250	1000	187.9	0.666
18SI-42-501	18SI-60-501	16-2 (1TPJ) Purple, Gray 12-3 Brown, Orange, Gray, Green	250	1000	187.9	0.666

Other custom constructions available subject to minimums and manufacturing lead-times; contact your AFC Representative for more information. MC Luminary Cable® is intended for use in non shielded applications

# MC LUMINARY TUFF® CABLE \*U.S. Patent Pending

Type MC-PCS

## ARMOR

Galvanized Interlocking Steel Strip (Blue armor)

## CONDUCTORS

Solid/Stranded Copper

## CONDUCTOR INSULATION

THHN (Power)

TFN (Control)

## MAXIMUM TEMPERATURE RATING

90°C (Dry)

## NEUTRAL CONDUCTOR

White 120/208V

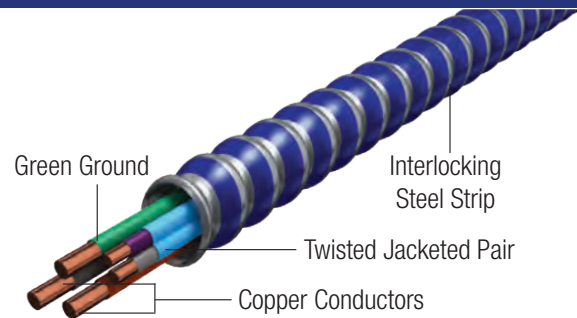
Gray 277/480V

## CONTROL CABLES

16 AWG Solid TFN Twisted Blue jacketed pair (Purple/Gray)

## MAXIMUM VOLTAGE RATING

600V



## REFERENCES & RATINGS

- UL 66, 83, 1479, 1569, 1581, 2556, File Reference E80042
- NEC® 250.118, 300.22(C), 392, 396, 330, 501, 502, 503, 530, 504, 505, 518, 520, 530, 645, 725
- Federal Specification A-A-59544 (formerly J-C-30B)
- Meets all applicable OSHA and HUD Requirements
- Cable Tray Rated, install per NEC®
- UL Classified 1, 2, and 3 hour through penetration (Fire Stop) product, R14141
- Environmental Air-Handling Space Installation per NEC® 300.22(C)
- Power and/or lighting as well as signal and/or control conductors per NEC Section 725.136(I)(1)
- Made in USA of US and/or imported materials

PRODUCT CODE		TRADE SIZE	LENGTH (ft)		APPROX. WEIGHT lbs/1,000ft	APPROX. ARMOR O.D. inches
Coil	Reel		Coil	Reel		
<b>SOLID</b>						
18BEB42T500	18BEB60T500	16-2 (1TPJ) Purple, Gray 12-2 Black, White, Green	250	1000	237.7	0.626
18BEB42T504	18BEB60T504	16-2 (1TPJ) Purple, Gray 12-2 Red, White, Green	250	1000	237.7	0.626
18BEB42T505	18BEB60T505	16-2 (1TPJ) Purple, Gray 12-2 Blue, White, Green	250	1000	237.7	0.626
18BEB42T501	18BEB60T501	16-2 (1TPJ) Purple, Gray 12-2 Brown, Gray, Green	250	1000	237.7	0.626
18BEB42T502	18BEB60T502	16-2 (1TPJ) Purple, Gray 12-2 Orange, Gray, Green	250	1000	237.7	0.626
18BEB42T503	18BEB60T503	16-2 (1TPJ) Purple, Gray 12-2 Yellow, Gray, Green	250	1000	237.7	0.626
18BEB42T507	18BEB60T507	16-2 (1TPJ) Purple, Gray 12-2 Purple, Gray, Green	250	1000	286.6	0.653
18BMB42T500	18BMB60T500	16-2 (1TPJ) Purple, Gray 12-3 Black, Red, White, Green	250	1000	268.6	0.653
18BMB42T501	18BMB60T501	16-2 (1TPJ) Purple, Gray 12-3 Brown, Orange, Gray, Green	250	1000	268.6	0.653
18BKB42T500	18BKB60T500	16-2 (1TPJ) Purple, Gray 10-2 Black, White, Green	250	1000	291.4	0.670
18BKB42T501	18BKB60T501	16-2 (1TPJ) Purple, Gray 10-2 Brown, Gray, Green	250	1000	291.4	0.670

Other custom constructions available subject to minimums and manufacturing lead-times; contact your AFC Representative for more information. MC Luminary Cable® is intended for use in non shielded applications

# MC LUMINARY® PVC JACKETED CABLE \*U.S. Patent Pending

Type MC-PCS

## ARMOR

Galvanized Interlocking Steel Strip with PVC jacket

## JACKET COLOR

Charcoal Gray

## CONDUCTORS

Solid Copper

## CONDUCTOR INSULATION

THHN (Power)

TFN (Control)

## MAXIMUM TEMPERATURE RATING

90°C (Dry); 75°C (Wet)

## NEUTRAL CONDUCTOR

White 120/208V

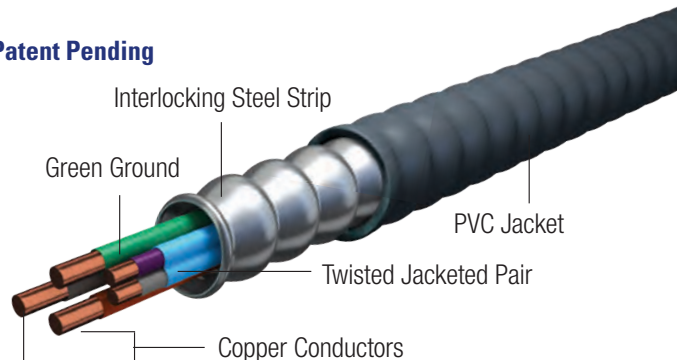
Gray 277/480V

## CONTROL CABLES

16 AWG Solid TFN Twisted Blue jacketed pair (Purple/Gray)

## MAXIMUM VOLTAGE RATING

600V



## REFERENCES & RATINGS

- UL 66, 83, 1569, 1581, 2556, File Reference E80042
- NEC® 250.118, 392, 396, 330, 501, 502, 503, 530, 504, 505, 518, 520, 530, 645, 725
- UL listed for direct burial in earth or concrete encasement
- Listed for -40°C low temperature use
- UL1569, 70,000 BTU and FT4 vertical tray flame listed
- Sunlight and oil resistant with direct plow-in capability
- Save up to 30% labor and installation costs
- Federal Specification A-A-59544 (formerly J-C-30B)
- Meets all applicable OSHA and HUD Requirements
- Cable Tray Rated, install per NEC®
- Power and/or lighting as well as signal and/or control conductors per NEC Section 725.136(l)(1)
- Made in USA of US and/or imported materials

PRODUCT CODE		TRADE SIZE	LENGTH (ft)		APPROX. WEIGHT lbs/1,000ft	APPROX. ARMOR O.D. inches	APPROX. OVER JACKET O.D. inches
Coil	Reel		Coil	Reel			
<b>PVC JACKETED CABLE</b>							
LJ04-42-500	LJ04-60-500	16-2 BLUE JACKET (1TPJ) Purple, Gray 12-2 Black, White, Green	250	1000	344.9	0.623	0.723
LJ04-42-504	LJ04-60-504	16-2 BLUE JACKET (1TPJ) Purple, Gray 12-2 Red, White, Green *	250	1000	344.9	0.623	0.723
LJ04-42-505	LJ04-60-505	16-2 BLUE JACKET (1TPJ) Purple, Gray 12-2 Blue, White, Green *	250	1000	344.9	0.623	0.723
LJ04-42-501	LJ04-60-501	16-2 BLUE JACKET (1TPJ) Purple, Gray 12-2 Brown, Gray, Green	250	1000	344.9	0.623	0.723
LJ04-42-502	LJ04-60-502	16-2 BLUE JACKET (1TPJ) Purple, Gray 12-2 Orange, Gray, Green *	250	1000	344.9	0.623	0.723
LJ04-42-503	LJ04-60-503	16-2 BLUE JACKET (1TPJ) Purple, Gray 12-2 Yellow, Gray, Green *	250	1000	344.9	0.623	0.723
LJ05-42-500	LJ05-60-500	16-2 BLUE JACKET (1TPJ) Purple, Gray 12-3 Black, Red, White, Green	250	1000	381.3	0.650	0.750
LJ05-42-501	LJ05-60-501	16-2 BLUE JACKET (1TPJ) Purple, Gray 12-3 Brown, Orange, Gray, Green	250	1000	381.3	0.650	0.750
LJ07-42-500	LJ07-60-500	16-2 BLUE JACKET (1TPJ) Purple, Gray 10-2 Black, White, Green *	250	1000	407.3	0.667	0.767
LJ07-42-501	LJ07-60-501	16-2 BLUE JACKET (1TPJ) Purple, Gray 10-2 Brown, Gray, Green *	250	1000	407.3	0.667	0.767

Recommend AFC Fittings

AFC-596-U Uninsulated Trade Size 1/2"

AFC-596-I Insulated Trade Size: 1/2"

\*Made to order, subject to minimums and lead times

# MC LUMINARY® QUIK LITE \*U.S. Patent No. 8,088,997 & Patent Pending **\*NEW!\***

Type MC-PCS

## ARMOR

Interlocking Aluminum Strip (Plain armor)

## CONDUCTORS

Solid/Stranded Copper

## CONDUCTOR INSULATION

THHN with protective polypropylene covering on each insulated conductor (Power)

TFN (Control)

## MAXIMUM TEMPERATURE RATING

90°C (Dry) Rating

## GROUNDING

One grounding means – armor PLUS full-sized aluminum ground/bond conductor NEC® 250.118(10)(b)

## NEUTRAL CONDUCTOR

White 120/208V

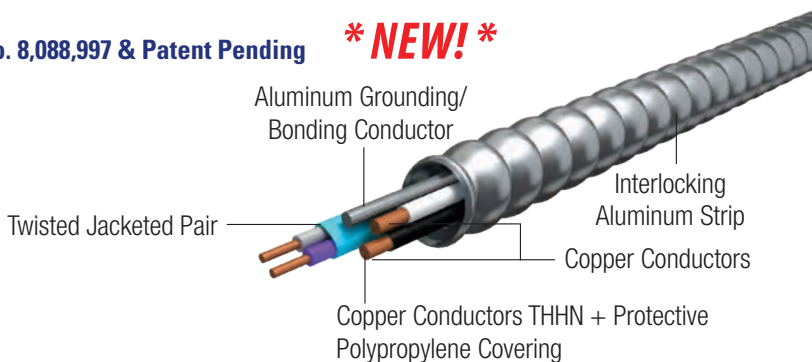
Gray 277/480V

## CONTROL CABLE

16 AWG Solid TFN Twisted Blue jacketed pair (Purple, Gray)

## MAXIMUM VOLTAGE RATING

600V



## REFERENCES & RATINGS

- UL® 66, 83, 1569, 1581, 2556, File Reference E80042
- NEC® 330, 300.22(C), 230.43, 250.118, 392, 396, 501, 502, 503, 530, 518, 520, 645, 690.31(G) Solar Photo voltaic applications, 725
- Federal spec A-A-59544 (formerly J-C-30B)
- Meets all applicable OSHA and HUD requirements
- May be surface mounted, fished and/or embedded in plaster
- UL® Classified 1, 2, and 3 hour through (Fire) penetration product, R-14141
- NEC® 300.22(C) Environmental Air Handling Spaces
- Cable Tray Rated, install per NEC®

PRODUCT CODE		TRADE SIZE	LENGTH (FT)		APPROX. WEIGHT lbs/1,000ft	APPROX. ARMOR O.D. inches
Coil	Reel		Coil	Reel		
<b>SOLID</b>						
MC04-42-500	MC04-60-500	16-2 (1 TPJ) Purple, Gray 12-2 Black, White	250	1000	160	0.686
MC04-42-504*	MC04-60-504*	16-2 (1 TPJ) Purple, Gray 12-2 Red, White	250	1000	160	0.686
MC04-42-505*	MC04-60-505*	16-2 (1 TPJ) Purple, Gray 12-2 Blue, White	250	1000	160	0.686
MC04-42-501	MC04-60-501	16-2 (1 TPJ) Purple, Gray 12-2 Brown, Gray	250	1000	160	0.686
MC04-42-502*	MC04-60-502*	16-2 (1 TPJ) Purple, Gray 12-2 Orange, Gray	250	1000	160	0.686
MC04-42-503*	MC04-60-503*	16-2 (1 TPJ) Purple, Gray 12-2 Yellow, Gray	250	1000	160	0.686
MC05-42-500	MC05-60-500	16-2 (1 TPJ) Purple, Gray 12-3 Black, Red, White	250	1000	190	0.708
MC05-42-501	MC05-60-501	16-2 (1 TPJ) Purple, Gray 12-3 Brown, Orange, Gray	250	1000	190	0.708
<b>STRANDED</b>						
MC58-42-500	MC58-42-500	16-2 (1 TPJ) Purple, Gray 12-2 Black, White	250	1000	171	0.699
MC58-42-501	MC58-42-501	16-2 (1 TPJ) Purple, Gray 12-2 Brown, Gray	250	1000	171	0.699
MC59-42-500	MC59-60-500	16-2 (1 TPJ) Purple, Gray 12-3 Black, Red, White	250	1000	202	0.725
MC59-42-501	MC59-60-501	16-2 (1 TPJ) Purple, Gray 12-3 Brown, Orange, Gray	250	1000	202	0.725

\*Made to order, subject to minimums and lead times  
MC Luminary® Quik in Galvanized Steel available upon request.

# LUMINARY FIXTURE WHIPS

**\* NEW! \***

## CONDUIT

Galvanized Reduced Wall Flexible Steel Conduit

## CONDUCTORS

Solid or Stranded Copper (Power)  
Solid Copper (Control)

## INSULATION

Power: THHN or TFN  
Control: 18-2 AWG or 16-2 AWG Tray Cable

## MAXIMUM TEMPERATURE RATING

90°C (Dry) Rating

## GROUNDING

Insulated Green Copper Grounding Conductor

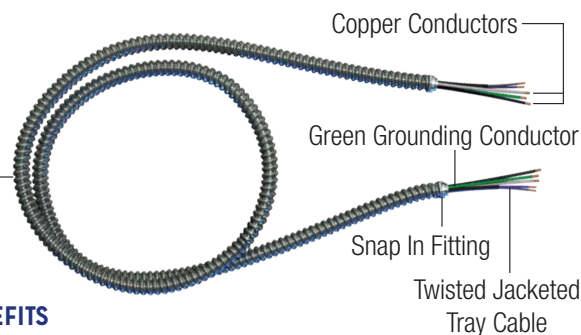
## NEUTRAL CONDUCTOR

White 120/208V  
Gray 277/480V

## MAXIMUM VOLTAGE RATING

600V

Galvanized Reduced Wall Flexible Steel Conduit



## FEATURES & BENEFITS

- Lead lengths of 9 inches on each side
- For LED and fluorescent dimming applications
- Uses 6 foot length of 1/2 inch flex, other sizes available upon request
- Stock items assembled with Snap-In Fitting, others available upon request

## REFERENCES & RATINGS

- UL® 1, 66, 83, 514B, File Reference E96572
- NEC 250.118, 300.22(C), 348, 410, 725
- Environmental Air-Handling Space Plenum Installation per NEC 300.22(C)
- Power and/or lighting as well as signal and/or control conductors per NEC Section 725.136(l)(1)
- Made in USA of US and/or imported materials

PART NUMBER	DESCRIPTION	UNITS PER PACKAGE
<b>SOLID POWER / SOLID 16-2 CONTROL</b>		
LW4A3S824E6-00	18-2 (1 TPJ) (Purple, Gray) 18-3 Black, White, Green	50
LW4A3S824E6-01	18-2 (1 TPJ) (Purple, Gray) 18-3 Brown, Gray, Green	50
LW4A4S824E6-00	18-2 (1 TPJ) (Purple, Gray) 18-4 Black, Red, White, Green	50
LW4A4S824E6-01	18-2 (1 TPJ) (Purple, Gray) 18-4 Brown, Orange, Gray, Green	50
LW4B3S624E6-00	16-2 (1 TPJ) (Purple, Gray) 16-3 Black, White, Green	50
LW4B3S624E6-01	16-2 (1 TPJ) (Purple, Gray) 16-3 Brown, Gray, Green	50
LW4B4S624E6-00	16-2 (1 TPJ) (Purple, Gray) 16-4 Black, Red, White, Green	50
LW4B4S624E6-01	16-2 (1 TPJ) (Purple, Gray) 16-4 Brown, Orange, Gray, Green	50
LW4C3S624E6-00	16-2 (1 TPJ) (Purple, Gray) 14-3 Black, White, Green	50
LW4C3S624E6-01	16-2 (1 TPJ) (Purple, Gray) 14-3 Brown, Gray, Green	50
LW4C4S624E6-00	16-2 (1 TPJ) (Purple, Gray) 14-4 Black, Red, White, Green	50
LW4C4S624E6-01	16-2 (1 TPJ) (Purple, Gray) 14-4 Brown, Orange, Gray, Green	50
LW4D3S624E6-00	16-2 (1 TPJ) (Purple, Gray) 12-3 Black, White, Green	50
LW4D3S624E6-01	16-2 (1 TPJ) (Purple, Gray) 12-3 Brown, Gray, Green	50
LW4D4S624E6-00	16-2 (1 TPJ) (Purple, Gray) 12-4 Black, Red, White, Green	50
LW4D4S624E6-01	16-2 (1 TPJ) (Purple, Gray) 12-4 Brown, Orange, Gray, Green	50
<b>STRANDED POWER / SOLID 16-2 CONTROL</b>		
LW4E3S824E6-00	18-2 (1 TPJ) (Purple, Gray) 18-3 Black, White, Green	50
LW4E3S824E6-01	18-2 (1 TPJ) (Purple, Gray) 18-3 Brown, Gray, Green	50
LW4E4S824E6-00	18-2 (1 TPJ) (Purple, Gray) 18-4 Black, Red, White, Green	50
LW4E4S824E6-01	18-2 (1 TPJ) (Purple, Gray) 18-4 Brown, Orange, Gray, Green	50
LW4F3S624E6-00	16-2 (1 TPJ) (Purple, Gray) 16-3 Black, White, Green	50
LW4F3S624E6-01	16-2 (1 TPJ) (Purple, Gray) 16-3 Brown, Gray, Green	50
LW4F4S624E6-00	16-2 (1 TPJ) (Purple, Gray) 16-4 Black, Red, White, Green	50
LW4F4S624E6-01	16-2 (1 TPJ) (Purple, Gray) 16-4 Brown, Orange, Gray, Green	50
LW4G3S624E6-00	16-2 (1 TPJ) (Purple, Gray) 14-3 Black, White, Green	50
LW4G3S624E6-01	16-2 (1 TPJ) (Purple, Gray) 14-3 Brown, Gray, Green	50
LW4G4S624E6-00	16-2 (1 TPJ) (Purple, Gray) 14-4 Black, Red, White, Green	50
LW4G4S624E6-01	16-2 (1 TPJ) (Purple, Gray) 14-4 Brown, Orange, Gray, Green	50
LW4H3S624E6-00	16-2 (1 TPJ) (Purple, Gray) 12-3 Black, White, Green	50
LW4H3S624E6-01	16-2 (1 TPJ) (Purple, Gray) 12-3 Brown, Gray, Green	50
LW4H4S624E6-00	16-2 (1 TPJ) (Purple, Gray) 12-4 Black, Red, White, Green	50
LW4H4S624E6-01	16-2 (1 TPJ) (Purple, Gray) 12-4 Brown, Orange, Gray, Green	50

Note: Carton quantities of 15 pieces available upon request. Also available in aluminum flexible metal conduit.



## **MC LUMINARY HCF™ LITE CABLES** \*U.S. Patent No. 8,088,997 & Patent Pending

Type MC-PCS Health Care Facilities (Aluminum)

### **ARMOR**

Interlocked Aluminum Strip (Light green striped)

### **CONDUCTORS**

Solid/Stranded Copper

### **CONDUCTOR INSULATION**

THHN + Protective Polypropylene Cover (Power)  
TFN (Control)

### **MAXIMUM TEMPERATURE RATING**

90°C (Dry)

### **GROUNDING**

Two grounding means - (1) Combined armor and full-sized aluminum ground conductor NEC® 250.118(10)(b)

(2) Full-sized green insulated copper grounding conductor

### **NEUTRAL CONDUCTOR**

White 120/208V

Gray 277/480V

### **CONTROL CABLES**

16 AWG Solid TFN Twisted Blue jacketed pair (Purple/Gray)

### **MAXIMUM VOLTAGE RATING**

600V

### **REFERENCES & RATINGS**

- UL 66, 83, 1479, 1569, 1581, 2556, File Reference E80042
- NEC® 330, 250.118, 300.22(C), 392, 396, 330, 501, 502, 503, 530, 504, 505, 517, 518, 520, 530, 645, 690.31(G) Solar Photo Voltaic applications, 725
- Permits conductors of control circuits to be placed in a cable with conductors of electric light, power, or Class 1 circuits
- Federal Specification A-A-59544 (formerly J-C-30B)
- Meets all applicable OSHA and HUD Requirements
- Cable Tray Rated, install per NEC®
- UL Classified 1, 2, and 3 hour through penetration (Fire Stop) product, R14141
- Environmental Air-Handling Space Plenum Installation per NEC® 300.22(C)
- Power and/or lighting as well as signal and/or control conductors per NEC Section 725.136(l)(1)
- Made in USA of US and/or imported materials
- U.S. Patent No. 8,088,997 & Patent Pending

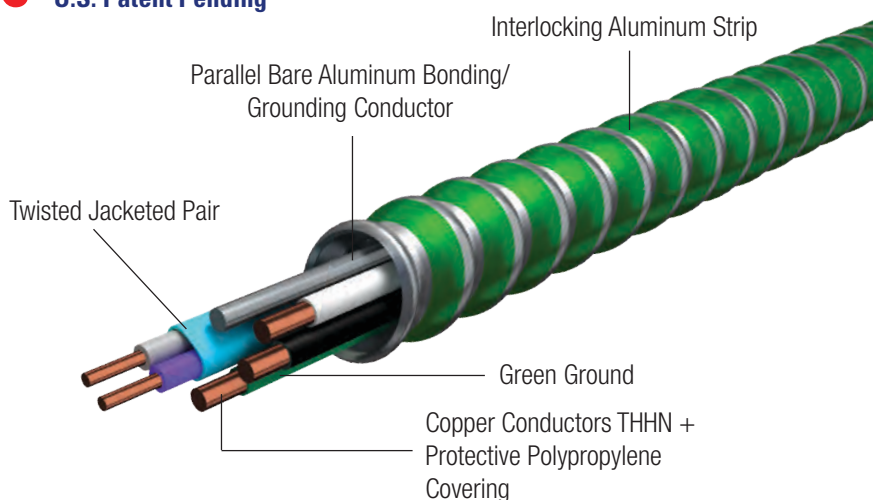


# MC LUMINARY HCF™ LITE CABLES \*U.S. Patent Pending

Type MC-PCS Health Care Facilities (Aluminum)

## BENEFITS

- Approved for use in patient care areas per NEC 517.13
- May be surface mounted, fished and/or embedded in plaster
- Save up to 30% labor and installation costs compared to traditional wiring methods
- Parallel bonding/grounding conductor for faster termination



PRODUCT CODE		TRADE SIZE	STOCK VS MADE TO ORDER	COPPER CONDUCTOR TYPE	GROUNDING CONDUCTOR AWG COLOR	BARE ALUM. BONDING/ BOND COND. AWG	LENGTH (ft)		APPROX. WEIGHT lbs/1,000ft	APPROX. ARMOR O.D. inches
Coil	Reel						Coil	Reel		
<b>SOLID (16-2 SOLID CONTROL)</b>										
LH04-42-500	LH04-60-500	16-2 (1TPJ) Purple, Gray 12-2 Black, White	Stock	Solid	12 Green	10	250	1000	196.8	0.708
LH04-42-504	LH04-60-504	16-2 (1TPJ)(Purple, Gray 12-2 Red, White	Made to Order*	Solid	12 Green	10	250	1000	196.8	0.708
LH04-42-505	LH04-60-505	16-2 (1TPJ) Purple, Gray 12-2 Blue, White	Made to Order*	Solid	12 Green	10	250	1000	196.8	0.708
LH04-42-501	LH04-60-501	16-2 (1TPJ) Purple, Gray 12-2 Brown, Gray	Stock	Solid	12 Green	10	250	1000	196.8	0.708
LH04-42-502	LH04-60-502	16-2 (1TPJ) Purple, Gray 12-2 Orange, Gray	Stock	Solid	12 Green	10	250	1000	196.8	0.708
LH04-42-503	LH04-60-503	16-2 (1TPJ) Purple, Gray 12-2 Yellow, Gray	Stock	Solid	12 Green	10	250	1000	196.8	0.708
LH05-42-500	LH05-60-500	16-2 (1TPJ) Purple, Gray 12-3 Black, Red, White	Stock	Solid	12 Green	10	250	1000	226.9	0.751
LH05-42-501	LH05-60-501	16-2 (1TPJ) Purple, Gray 12-3 Brown, Orange, Gray	Made to Order*	Solid	12 Green	10	250	1000	226.9	0.751
LH07-42-500	LH07-60-500	16-2 (1TPJ) Purple, Gray 10-2 Black, White	Stock	Solid	10 Green	8	250	1000	256.4	0.758
LH07-42-501	LH07-60-501	16-2 (1TPJ) Purple, Gray 10-2 Brown, Gray	Made to Order*	Solid	10 Green	8	250	1000	256.4	0.758
<b>STRANDED (16-2 SOLID CONTROL)</b>										
LH58-42-500	LH58-60-500	16-2 (1TPJ) Purple, Gray 12-2 Black, White	Stock	Stranded	12 Green	10	250	1000	202.4	0.725

Use with fitting listed and marked for use with MCI-A

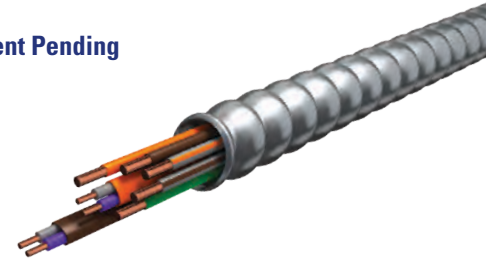
Other custom constructions available, also available with steel armor, subject to minimums and manufacturing lead-times; contact your AFC Representative for more information. MC Luminary Cable® is intended for use in non shielded applications

\* Subject to minimums and manufacturing lead times

# MC LUMINARY CABLE MULTIZONE

Type MC-PCS

**MC LUMINARY**  
MultiZone™ Lite \*U.S. Patent Pending



## ARMOR

Interlocking Aluminum Strip (Plain armor)

## CONDUCTORS

Solid Copper

## CONDUCTOR INSULATION

THHN (Power)

TFN (Control)

## MAXIMUM TEMPERATURE RATING

90°C (Dry)

## NEUTRAL CONDUCTOR

White 120/208V

Gray 277/480V

## CONTROL CABLE

16 AWG Solid TFN Twisted jacketed pair (Purple/Gray)

See table below for jacket colors

## MAXIMUM VOLTAGE RATING

600V

## REFERENCES & RATINGS

- UL 66, 83, 1479, 1569, 1581, 2556, File Reference E80042
- NEC® 250.118, 300.22(C), 392, 396, 330, 501, 502, 503, 530, 504, 505, 518, 520, 530, 645, 725
- Federal Specification A-A-59544 (formerly J-C-30B)
- Meets all applicable OSHA and HUD Requirements
- Cable Tray Rated, install per NEC®
- UL Classified 1, 2, and 3 hour through penetration (Fire Stop) product, R14141
- Environmental Air-Handling Space Plenum Installation per NEC® 300.22(C)
- Power and/or lighting as well as signal and/or control conductors per NEC Section 725.136(I)(1)
- Made in USA of US and/or imported materials

PRODUCT CODE		CONTROL CABLE	TRADE SIZE	PHASE	NEUTRAL	GROUND	APPROX. WEIGHT lbs/1,000ft	APPROX. ARMOR O.D. inches			
Reels 250'	Reels 1,000'										
18LB-44-500	18LB-60-500	16-2	Purple, Gray 1 TPJ Black, Jacket	12-1	Black	12-1	White	12-1	Green	201	0.738
		16-2	Purple, Gray 1 TPJ Red, Jacket								
18LB-44-501	18LB-60-501	16-2	Purple, Gray 1 TPJ Brown, Jacket	12-1	Brown	12-1	Gray	12-1	Green	201	0.738
		16-2	Purple, Gray 1 TPJ Orange, Jacket								
18LS-44-501	18LS-60-501	16-2	Purple, Gray 1 TPJ Brown, Jacket	12-1	Brown	12-1	Gray	12-1	Green	260	0.842
		16-2	Purple, Gray 1 TPJ Orange, Jacket								
		16-2	Purple, Gray 1 TPJ Yellow, Jacket								
18LC-44-501	18LC-60-501	16-2	Purple, Gray 1 TPJ Brown, Jacket	12-2	Brown	12-1	Gray	12-1	Green	241	0.795
		16-2	Purple, Gray 1 TPJ Orange, Jacket		Orange						
18LD-44-501	18LD-60-501	16-2	Purple, Gray 1 TPJ Brown, Jacket	12-3	Brown	12-1	Gray	12-1	Green	315	0.902
		16-2	Purple, Gray 1 TPJ Orange, Jacket		Orange						
		16-2	Purple, Gray 1 TPJ Yellow, Jacket		Yellow						
<b>NEUTRAL PER PHASE</b>											
18LP-44-501	18LP-60-501	16-2	Purple, Gray 1 TPJ Brown, Jacket	12-2	Brown	12-2	Gray	12-1	Green	271	0.833
		16-2	Purple, Gray 1 TPJ Orange, Jacket		Orange		Gray				

Other custom constructions available, also available with steel armor, subject to minimums and manufacturing lead-times; contact your AFC Representative for more information.

MC Luminary Cable® is intended for use in non shielded applications

# MORE BRIGHT IDEAS

**NEW!**

MC Luminary<sup>®</sup> Quik

**NEW!**

Luminary Whips



**AFC**  
CABLE SYSTEMS<sup>®</sup>

A PART OF **atkore**  
INTERNATIONAL

960 Flaherty Drive  
New Bedford, MA 02745  
PHONE / 508-998-1131  
TOLL FREE / 800-757-6996

[www.afcweb.com](http://www.afcweb.com)



UNISTRUT®



RAZOR®  
RIBBON



Konkore™  
FITTINGS



Columbia-MBF™



TECTRONTube®

COPE®



KAF-TECH®

UNISTRUT®  
Construction



COBRASYSTEMSINC™

SCI  
STEEL COMPONENTS INC.

marco™  
cablemanagement

FLEXICON®  
FLEXIBLE CONDUIT SOLUTIONS

Calconduit™

Calbrite™

Calbond™



COMMUNICATIONS  
INTEGRATORS, INC.