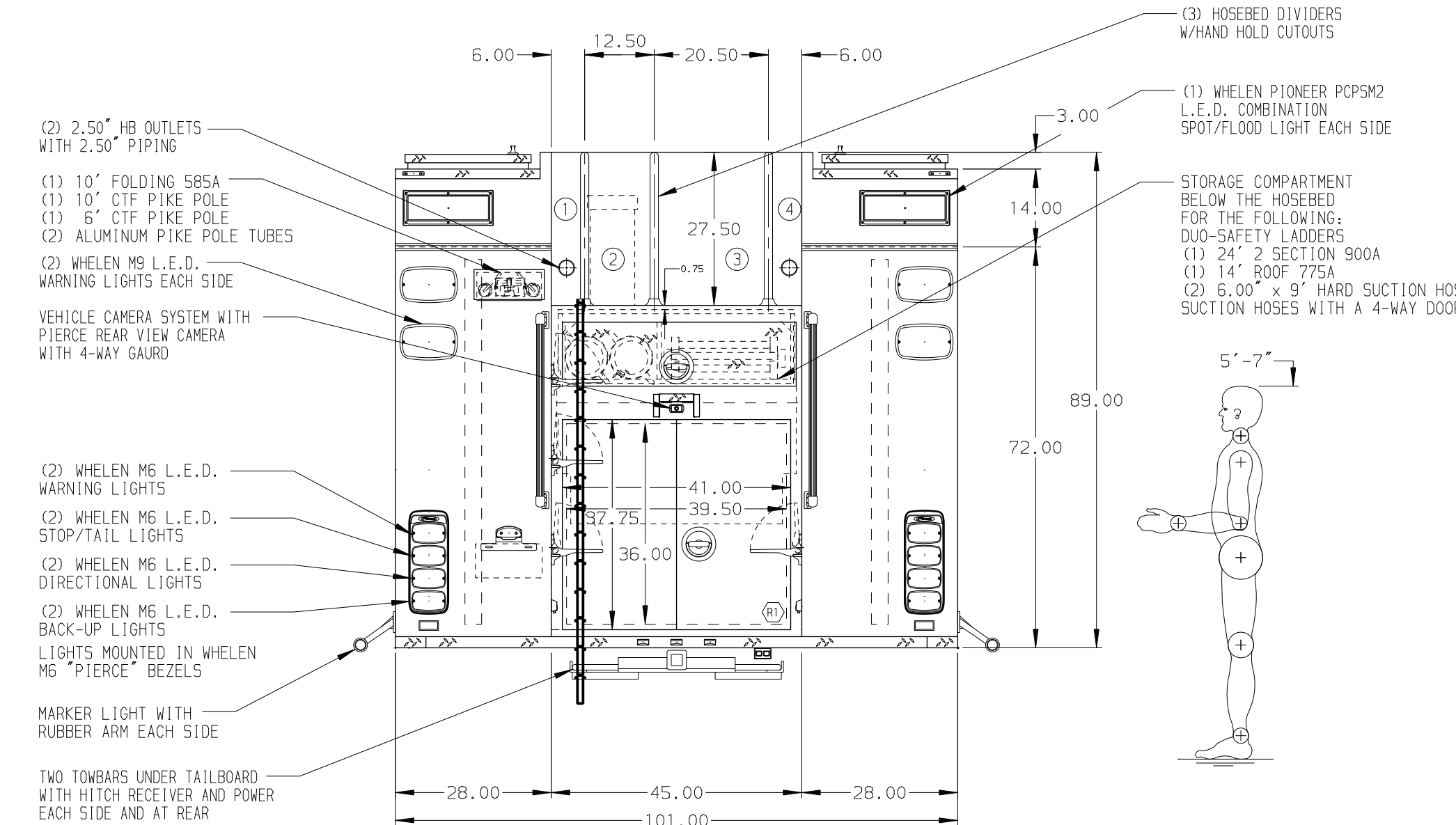


- HOSEBED CAPACITIES
- ① - 200' OF 2.50" HOSE
  - ② - 600' OF 3.00" HOSE
  - ③ - 1000' OF 4.00" KEY LDH HOSE
  - ④ - 300' OF 1.75" HOSE



**ALUMINUM BODY**

**NOTE**  
 DIMENSIONS SHOWN ARE APPROXIMATE AND ARE SUBJECT TO MINOR DEVIATIONS AS MAY OCCUR OR BE NECESSARY IN CONSTRUCTION. MINOR DETAILS NOT SHOWN.

1. ONSPOT AUTOMATIC TIRE CHAINS TO BE PROVIDED AT REAR
2. BATTERY CHARGER LOCATED IN DS HATCH COMPARTMENT
3. BATTERY CHARGER INDICATOR BEHIND DRIVER'S SEAT DISPLAYED THROUGH WINDOW
4. DUAL L.E.D. LIGHT STRIPS LOCATED IN HOSE BED

19APR17	AMI	TWH	
13APR17	AMI	WKL	
12APR17	AMI	TWH	CHASSIS DATA
22MAR17	AMI	TWH	MAKE
17MAR17	AMI	TWH	PIERCE
06JAN17	AMI	WKL	MODEL
05JAN17	AMI	WKL	
REV	DATE	BY	CH

		JOB NO.	30802
		SCALE	DATE
<b>TITLE</b> 1500-D-500P W/40G FOAM CELLS, 184" HDRP BODY (2)XLAYS, (4)REELS, GENERATOR, AMKUS POWER SUPPLY	<b>FOR</b> CITY OF MANASSAS FIRE & RESCUE DEPARTMENT MANASSAS, VIRGINIA	DRAWN BY	21DEC16
		CHECKED BY	22DEC16
DWG NO.	30802AD-SH1	SHEET SIZE	SHEET NO.
		D	1 OF 2