

- HOSEBED CAPACITIES
- ① 300' OF 3.00" D.J. POLY HOSE
  - ② 150' OF 3.00" D.J. POLY HOSE
  - ③ 150' OF 3.00" D.J. POLY HOSE
  - ④ 1000' OF 5.00" D.J. POLY HOSE

SURFACE DESIGNATION AND PATHWAY MARKINGS

(2) 2.50" OUTLETS

(3) 0.25" SINGLE SHEET HOSEBED DIVIDERS

(2) UNITY AG DECKLIGHTS

(1) WHELEN M6 L.E.D. WARNING LIGHT EACH SIDE

WHELEN P5000RR L.E.D. STOP LIGHT

PIERCE BACKUP CAMERA (RECESSED)

(2) WHELEN M6 L.E.D. WARNING LIGHTS

(2) WHELEN M6 L.E.D. SCENE LIGHTS

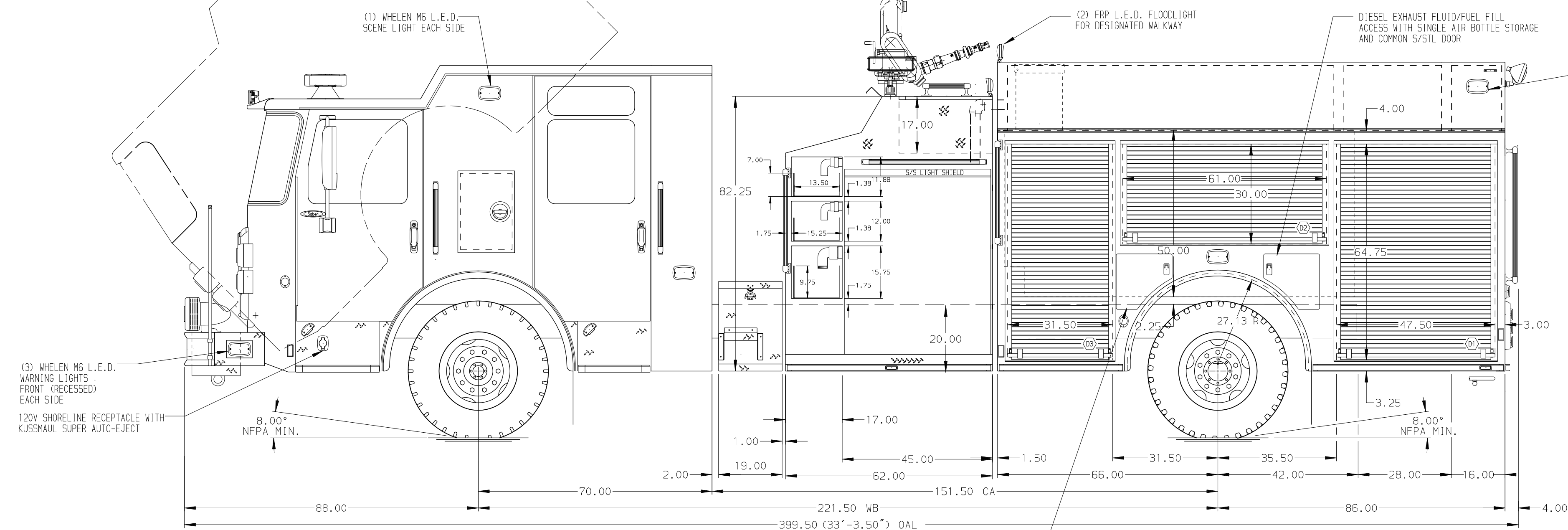
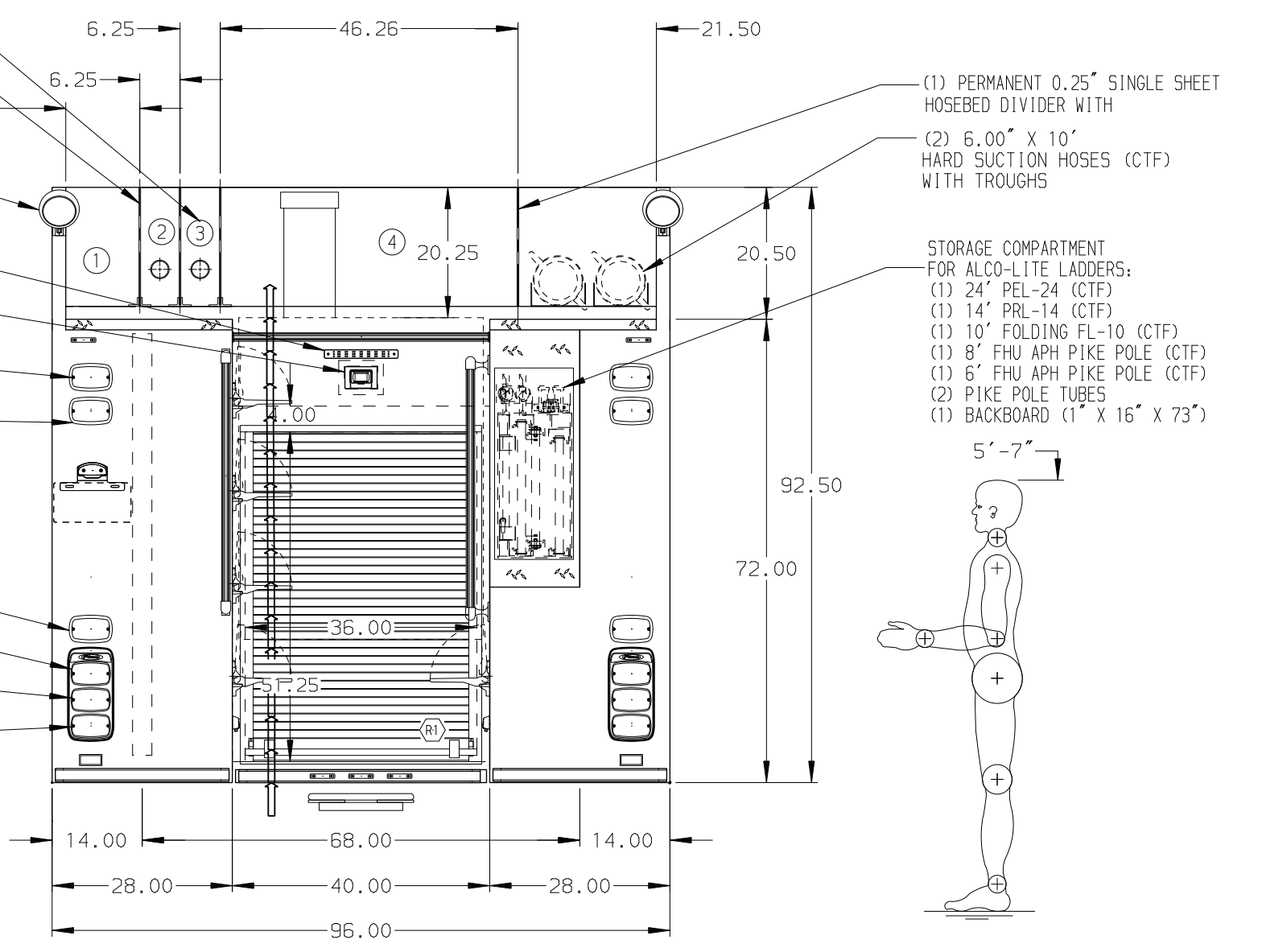
(2) WHELEN M6 L.E.D. WARNING LIGHTS

(2) WHELEN M6 L.E.D. STOP/TAI LIGHTS

(2) WHELEN M6 L.E.D. DIRECTIONAL LIGHTS

(2) WHELEN M6 L.E.D. BACK-UP LIGHTS

LIGHTS MOUNTED IN WHELEN M6 "PIERCE" BEZELS



ALUMINUM BODY

MAXIMUM O.A.L. 420.00"

MAXIMUM O.A.H. 129.00"

NOTE  
DIMENSIONS SHOWN ARE APPROXIMATE AND ARE SUBJECT TO MINOR DEVIATIONS AS MAY OCCUR OR BE NECESSARY IN CONSTRUCTION. MINOR DETAILS NOT SHOWN.

| REV     | DATE | BY  | CH | SABER FR |
|---------|------|-----|----|----------|
| 14AUG17 | JLA  | RW1 |    |          |
| 27JUN17 | JAF  | RW1 |    |          |
| 10MAY17 | LST  | JBL |    |          |

|         |  |            |         |
|---------|--|------------|---------|
|         |  | JOB NO.    | 31445   |
|         |  | SCALE      | 1:24    |
| TITLE   | 2000-D-750 GAL POLY, 152" BODY LDRS BTWN. TANK AND S. SHEET, (3) SPEEDLAYS, DELUGE | DATE       | 28APR17 |
| FOR     | HILLSBOROUGH COUNTY FIRE RESCUE TAMPA, FLORIDA                                     | DRAWN BY   | LST     |
| DWG NO. | 31445AD  | CHECKED BY | JBL     |
|         |  | SHEET SIZE | D       |
|         |  | SHEET NO.  | 1 OF 1  |