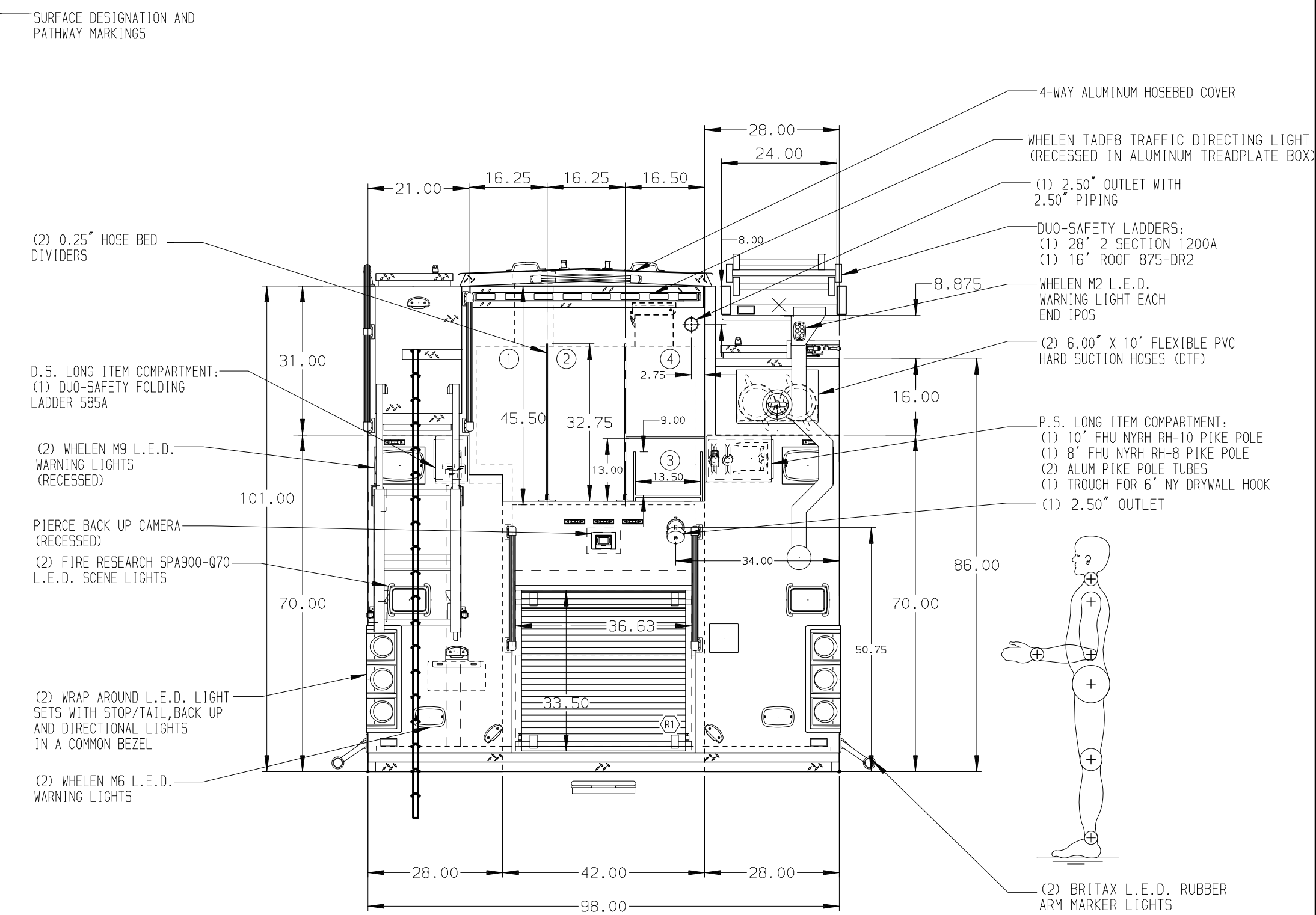


- HOSEBED CAPACITIES**
- ① 500' OF 5.00" D.J. POLY HOSE
 - ② 500' OF 5.00" D.J. POLY HOSE
 - ③ 200' OF 2.50" HOSE IN A POLY TRAY
 - ④ 200' OF 2.50" HOSE WITH 150' OF 1.75" HOSE IN A CLEVELAND LOAD ON TOP



ALUMINUM BODY MAXIMUM O.A.H. 135.00"

NOTE
DIMENSIONS SHOWN ARE APPROXIMATE AND ARE SUBJECT TO MINOR DEVIATIONS AS MAY OCCUR OR BE NECESSARY IN CONSTRUCTION. MINOR DETAILS NOT SHOWN.

- 2. BATTERY CHARGER LOCATED IN D3
- 3. BATTERY CHARGER INDICATOR LOCATED ON DRIVER'S SEAT RISER
- 4. 5/8\"/>

- 11. (1) LITTLE GIANT REVOLUTION XE 12017-MODEL 17 LADDER IN P3
- 12. ONE VERTICAL PARTITION IN P1
- 13. MOUNTING RACK WITH STRAPS FOR (4) FIRE EXTINGUISHERS IN P1
- 14. (1) 120V DUPLEX RECEPTACLE IN P3 AND IN EACH REAR FACING EMS COMPARTMENT

REV	DATE	BY	CH	QUANTUM
▽	11SEP17	LST	JJR	MAKE
▽	14AUG17	LST	JJR	PIERCE
▽	26MAY17	LST	KBO	MODEL

		JOB NO.	31289
		SCALE	1:24
TITLE 1500-D-800P 750 GAL OF WATER W/ 50 GAL FOAM CELL 189" PUC RESCUE, (4) X-LAYS, HYDRAULIC LADDER RACK	FOR CITY OF WAUKESHA FIRE DEPARTMENT WAUKESHA, WISCONSIN	DATE	
		DRAWN BY	LST
DWG NO. 31289AD		CHECKED BY	KBO
		SHEET SIZE	D
		SHEET NO.	1 OF 1