

[www.piercemfg.com](http://www.piercemfg.com)



Pierce Manufacturing Inc., An Oshkosh Corporation Company  
P.O. Box 2017, Appleton WI 54912-2017 USA

Specifications, descriptions, and illustrative material in this literature are as accurate as known at the time of publication, but are subject to change without notice. Illustrations may include optional equipment and accessories and may not include all standard equipment. All measurements are nominal values.  
© Pierce Manufacturing Inc., Pierce, the Pierce logo, Dash CF, Impel, Saber, and Velocity are registered trademarks, Command Zone and Enforcer are trademarks, and 360° Protection From Every Angle is a service mark of Pierce Manufacturing Inc., Appleton, WI. TAK-4 is a registered trademark and TAK-4 T3 is a trademark of Oshkosh Defense, LLC, Oshkosh, WI. Printed in USA.  
All other trademarks are the property of their respective owners.

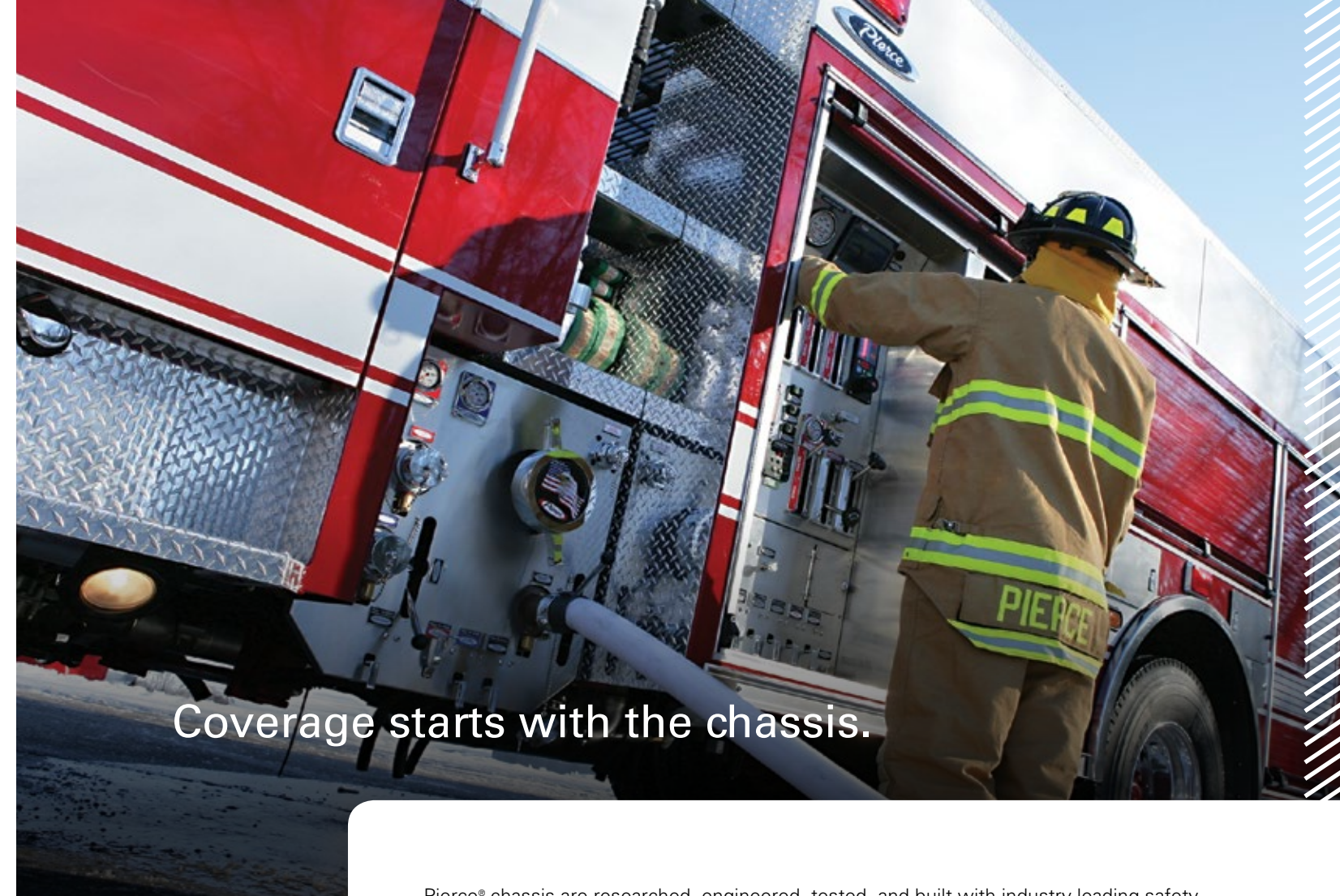
P-0129-SAFSYSBR 12/19



YOU'RE ALWAYS LOOKING OUT FOR OTHERS.  
FORTUNATELY, SOMEBODY'S LOOKING OUT FOR YOU.

AT PIERCE, WE DON'T JUST MEET SAFETY REQUIREMENTS.  
WE SET SAFETY STANDARDS. WE OFFER NOTHING LESS  
THAN 360° PROTECTION FROM EVERY ANGLE<sup>SM</sup>.

BECAUSE THAT'S WHAT'S EXPECTED OF THOSE WE SERVE.



Coverage starts with the chassis.

Pierce® chassis are researched, engineered, tested, and built with industry-leading safety features and equipment. Some of these innovations are apparent while others are invisible, but all are essential.

From bright exterior lighting to latching interior storage spaces and a mission-critical electrical system on Command Zone™ equipped trucks, Pierce fire trucks provide the safety to match their performance. Below are just some of the ways we ensure 360 degree protection.

- Side roll protection system
- Frontal air bags
- TAK-4® Independent Suspension systems
- Seat belt warning system ensures occupants are properly buckled
- Collision avoidance system warns before accidents can occur
- Lateral G-roll indicator alerts driver to excessive chassis roll
- Interior dome lights enhance nighttime visibility
- 13.38" frame rails reduce frame beaming & improve ride stability
- Electronic Stability Control (ESC)
- Ready reach seatbelts make buckling up 1-handed & hassle-free
- Noise insulation & soundproofing provide a quieter interior environment
- Tinted windows reduce solar load
- Roll Stability Control (RSC) auto braking system helps prevent side rolls
- Tire protection system including tire monitoring & tire blowout band protection
- Camera vision systems display obstacles clearly
- PS6® & PSV® seats enhance comfort & safety





## Frontal air bags.

We're never satisfied when it comes to occupant safety in Pierce apparatus. The logical evolution in 360 degree protection was the offering of frontal air bags – an industry first in custom chassis.

## Side roll protection system.

We've thought of all passengers. Our side roll protection system design was tested not simply for an average occupant but with crash dummies ranging from 5th percentile females to 95th percentile males. The evolution of our PS6® or PSV® seats allow for side roll air curtains to be fully integrated into the seating system rather than deploying from the wall, another first in the industry.

And we've thought of possibilities which may never occur to you, unless you've been in a side roll yourself. A combination of high-pressure stored argon and helium is released into the airbag cushion when the small, pyrotechnic initiator receives a trigger signal from the crash sensor. Since the gas temperature is relatively low (below 180 degrees Fahrenheit) and the cushion is non-vented (sealed), there is no risk of severe burns to the occupants.

360° Protection From Every Angle<sup>SM</sup> starts with minimizing the risks of 90 degree side rolls. But it doesn't end there. Side roll protection is default on Pierce custom chassis.



## First to bring the most important test to market.



Every Pierce® cab model is crash-tested to meet or exceed ECE requirements at the Center for Advanced Product Evaluation (CAPE), a division of IMMI.

CAPE's vehicle barrier crash testing facility has no equal, featuring a test lab, dynamic test sleds, static pull chamber, computer screen crash simulation capabilities, and the world's only 90 degree rollover impact test machine.

How rigorous is our testing? In addition to standard requirements, the Pierce Quantum® chassis passed a side strike test that wasn't mandated to meet the ECE 29 standard. Our Velocity® and Impel® chassis passed twice the ECE 29 level of energy for frontal impact testing. And the Dash® CF exceeded requirements by passing an additional roof crush at 5.4 times the ECE standards.



## Electronic Stability Control.

An automatic safety management braking system, Electronic Stability Control (ESC) enhances the directional and roll stability of fire apparatus during evasive maneuvers.

- Monitors lateral acceleration (cornering) of the vehicle & activates when the critical roll threshold is met
- Automatically reduces engine rpm, applies engine retarder (if so equipped), & selectively applies brakes to individual wheel ends of the front & rear axles to assist in bringing the vehicle back to its intended direction
- Reduces the possibility of the vehicle rolling on its side.
- Monitors directional stability through sensors & compares the actual direction of the vehicle versus the direction you travel
- Reduces the possibility of spinouts or driftouts, even in poor traction conditions





## The suspension that raises standards: TAK-4 Independent Suspension systems.

Pierce was the first custom fire truck manufacturer in North America to offer proprietary independent front suspension. TAK-4® Independent Front Suspension offers a 45 degree cramp angle, delivering a tighter turning radius, better handling, and more vehicle control.

It shortens stopping distance by up to 23 percent, improves ride quality by 340 percent, increases load-carrying capacity, improves durability, and simplifies maintenance. With the torsion bar lock system, vehicle lean can be adjusted within 15 minutes.

Pierce also offers TAK-4 Independent Rear Suspension as well as TAK-4 T3™, which combines the advantages of independent rear suspension with a 100 percent mechanical rear steering system for enhanced maneuverability.

### NFPA 1901 UL certification plus UL Canada (ULC) certification.



Pierce is the first fire apparatus manufacturer to be both third party certified to the latest NFPA 1901 edition and ULC Canada ULC-S515 standards by Underwriters Laboratories. Stages of testing include road, pump, weight, brake, performance, and aerial application. All products must pass all tests before a truck is released into Canada. This commitment to quality also applies to trucks sold in the United States.

## Information at your fingertips: Command Zone advanced electronics.

Better information means better decisions. The Command Zone™ system delivers full diagnostic and industry-first prognostic capabilities through the only purpose-built-for-fire-apparatus interface.

Connect up to five WiFi enabled devices. Review active and historic faults with text descriptions through a touchscreen sensitive enough for gloved hands. Check real-time data transmission and receive auto alerts for maintenance intervals.

Seat belt status. Virtual switch panels. Do Not Move Truck notifications. An entire suite of navigation, monitoring, and mitigation options. Command Zone is the easiest, most integrated, and robust link to optimal vehicle performance.



## Bonded, curved windshield.

With no center post obstruction, the single-piece windshield opens sight lines and reduces risk of accidents with clear views of the road, pedestrians, and traffic. Available on Enforcer™, Impel®, Saber®, and Velocity® custom chassis.



## Forward-mounted one-eleven mirrors on Velocity and Impel.

Pierce's exclusive one-eleven mirrors make these chassis the only custom OEM fire trucks to meet FMVSS-111 visibility standards for school buses. They minimize body and head movements of the driver, and ensure the officer's position does not interfere with passenger side mirror visibility. This positioning provides visibility to the front bumper as well as along the sides of the body, and narrows overall width of the vehicle by as much as 8".



## Rollup hosebed cover.

Add safety and space with the Pierce® rollup hosebed cover. It rolls forward, out of the way of the hosebed, for easier hose loading at the top of the truck. The solid cover protects the hose from all elements, and also provides an NFPA-compliant walking surface above the hose. The rollup hosebed cover does not add to overall height as most aluminum covers do when opened.



## Hands-free SCBA bracket.

Designed for walk-away use, the Pierce hands-free SCBA bracket is simpler, quicker, and safer. Inertia locks the bottle in place without the use of straps or levers. The bottle is released quickly and easily when you pull it from the holder. Resistant up to 30G, the bracket provides extra safety and security. The hands-free SCBA bracket can be retrofitted into many existing seats.

*SCBA bracket designed in conjunction with IMMI.*



## Automatic folding steps.

Pierce air-actuated steps fold out automatically when the door is opened. A large first step is provided as low as 16" from the ground. This makes cab exit and entry easier and safer, especially when suited up and carrying gear.

The large-area step height is a consistent 16". And since the steps foldaway automatically when the doors close, they stay clear of ice, snow, and mud.

Available on Impel®, Quantum®, and Velocity® chassis.

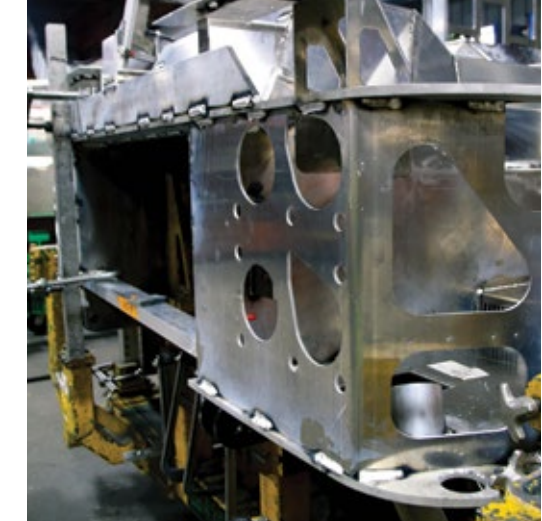


## VLH caps.

Even the smallest of features, like our VLH® caps, add an extra layer of safety for firefighters. When working with pressurized lines, VLH caps reduce risk of injuries caused by the inadvertent release of lines containing trapped residual pressure.

## The thickest firewall in the industry.

It starts with .25" aluminum welded to a .5" thick engine tunnel that is tied to the doorposts with a .5" thick semi-crosscar support, providing a rigid front that holds the cab together. This offers greater occupant protection in the event of a frontal crash plus greater shroud protection should an engine mishap occur.



## Tire protection system.

The Pierce Tire Pressure Management System uses sensors to monitor tire pressure/temperature and display them in the cab unit. Proper tire inflation reduces maintenance downtime, fuel costs, tire and tread wear, tire blowouts, tread separation, tandem axle tire wear, and heat-related tire problems.

Exclusive to Pierce in the fire industry, the Tire Blowout Protection Band features a safety band attached to a recessed drop inside the wheel. This prevents the tire from coming off the wheel during a blowout and assists the driver in maneuvering and slowing down in a safe manner.



## Pierce exclusive seats.

The first custom-designed, safer, and noticeably more comfortable seats in the industry, featuring built-in side roll protection.

PS6® and PSV® seats feature double-length seat belts and dual retractors that can be pulled quickly and comfortably over a firefighter in full turnout gear. The seats can also be retrofitted into many existing chassis.

- Side roll protection
- Dual seat belt retractors & double-length seat belts
- Hands-free SCBA holders
- Lumbar support
- 7.5 degree (PS6) & 5 degree (PSV) angles of recline
- 17" cushion (front to back)





## Minimizing exposure risk.

The most customizable chassis on the planet give you the most options to tailor a minimum exposure fleet. Easily cleanable seat surfaces. Exhaust options. Decon outlets. Alternative SCBA storage. High-impact HVAC filtration for reduced particle circulation. Warm water rinse outlets. Or customized Command Zone™ messaging tailored to your department's cleaning procedures.



## Protection is an action that goes beyond the fire and the truck.

There's a crossover between protecting communities and protecting firefighters, and that overlap is exactly where the CARE initiative lives.

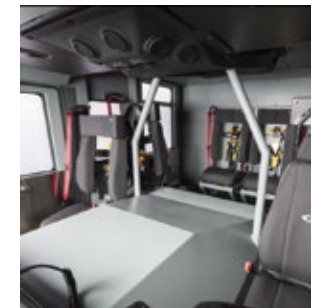
CARE (Carcinogen Awareness & Reduction to Exposure) is a partnership between Pierce Manufacturing and the Firefighter Cancer Support Network.

Through constant product development, training, education, and fundraising, we will raise the awareness and resources necessary to protect firefighters and their families from carcinogen exposure.



### Gross on-scene decon bucket.

On-scene decon can reduce exposure to carcinogens by as much as 85 percent. Starting summer of 2018, Pierce has equipped the first 1,500 apparatus shipped with a gross decon bucket. These kits will include carcinogen education and protective measures provided by Sylvester Cancer Center, Florida Firefighters Health and Safety Alliance, and Firefighter Cancer Support Network.



### Cab interior surfaces.

Your most important assets are riding inside the cab. Pierce uses brighter, smoother materials on seats, engine tunnels, interior walls, and flooring to ensure easier, thorough, and more frequent cab cleaning.

Attention to cab interior surfaces reduces the absorption of toxins as well as the amount of soot particles left behind.



### Vertical exhaust.

Diesel exhaust is classified by the International Agency for Research on Cancer (IARC) as carcinogenic to humans.

Vertical exhaust systems route dangerous engine emissions away from the pump operator to greatly reduce the risk of long-term, low-dosage exposure.



### Warm water rinse station.

A dedicated on-board tank provides warm, fresh, on-demand water. This integrated hand wash station provides immediate on-scene cleaning after exposure to soot particles and other carcinogens.