

PASSENGER'S SIDE COMPARTMENTS CONTAIN THE FOLLOWING:

COMPARTMENT P1 CONTAINS:

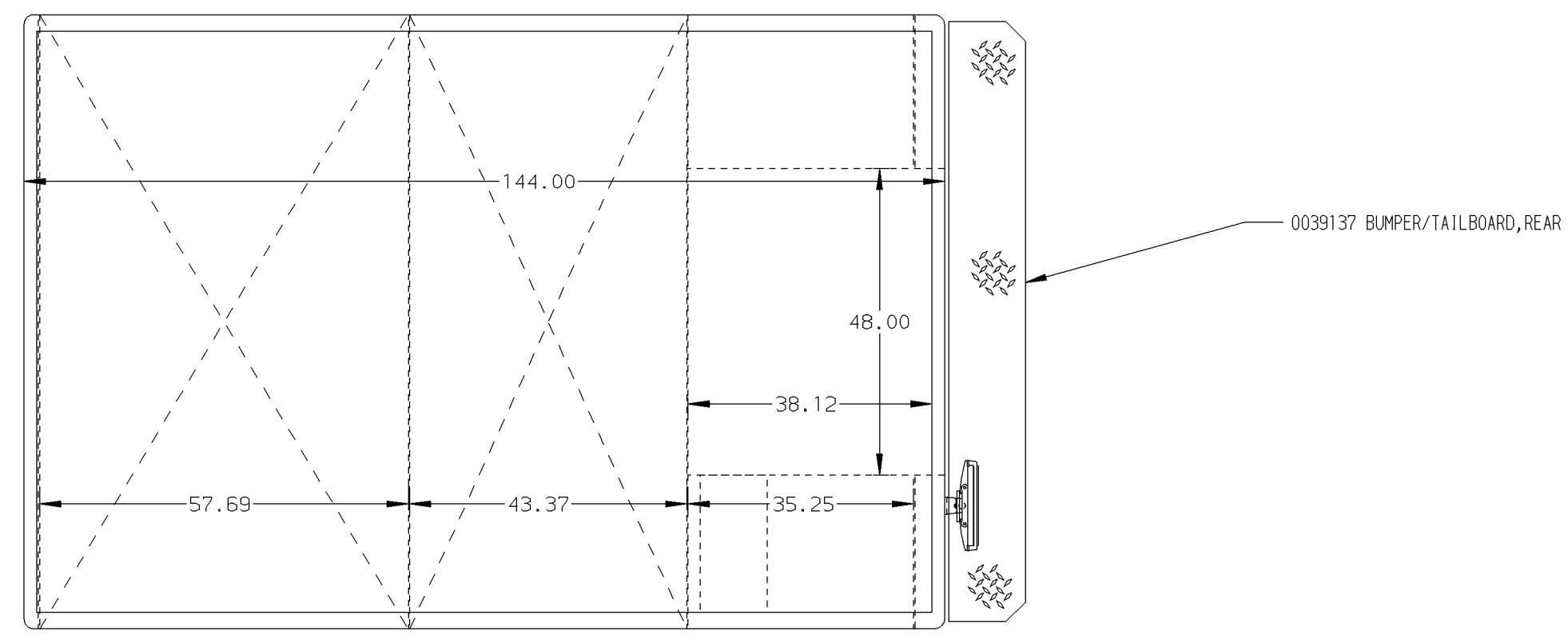
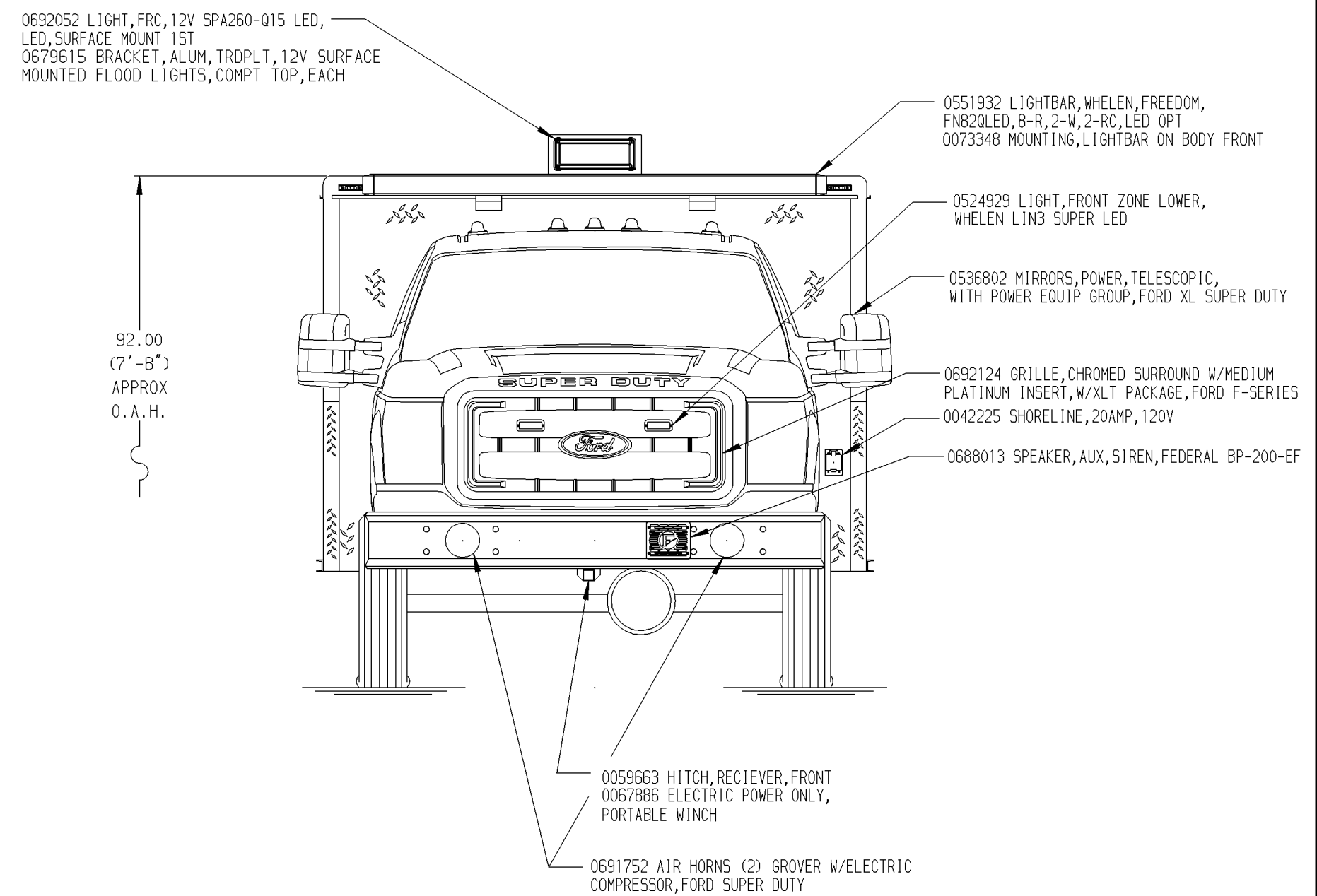
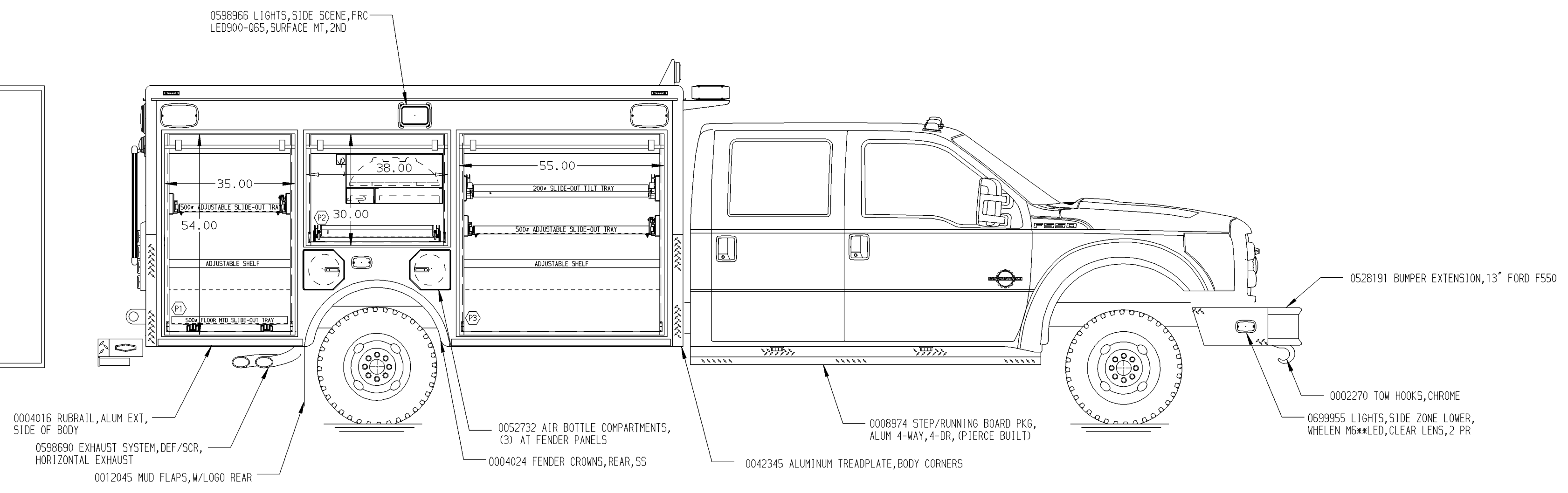
- (1) 0041751 TRAY SLIDE OUT, STD DEPTH, ADJUSTABLE HEIGHT, 2 SIDES, 500LB CAPACITY
- (1) 0041690 SHELF, ADJUSTABLE, 500 LB CAP., STD DEPTH COMPT
- (1) 0041694 TRAY SLIDE OUT, STD DEPTH, FLOOR MOUNTED, 2 SIDES, 500LB CAPACITY

COMPARTMENT P2 CONTAINS:

- (1) 0052734 TRAY SLIDE OUT, TWO WAY, TRANSVERSE COMPT, FLOOR MOUNTED, 500# CAPACITY

COMPARTMENT P3 CONTAINS:

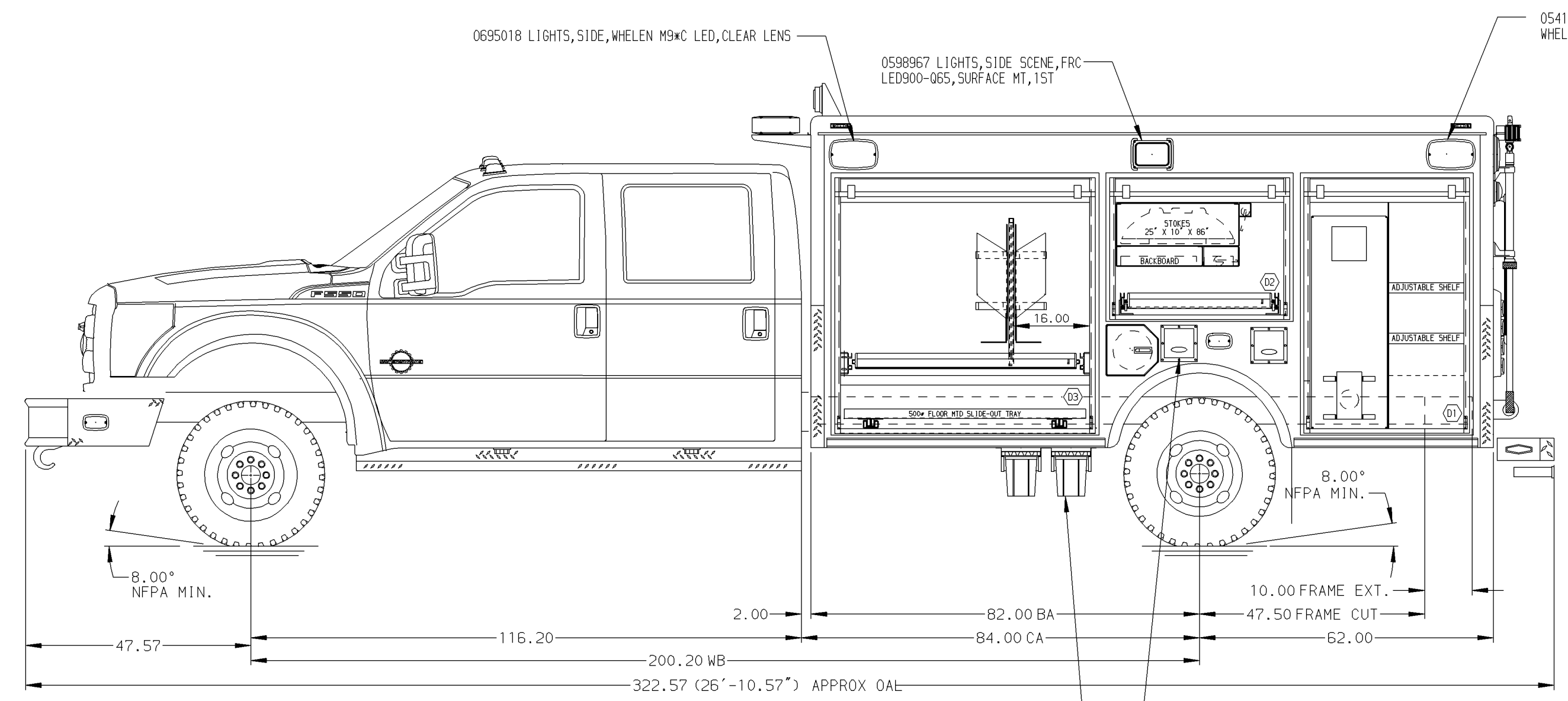
- (1) 0041756 TRAY SLIDE OUT, TILT 30°, 1/2 DEPTH OF TRANSVERSE COMPT, 200# CAPACITY
- (1) 0042447 TRAY SLIDE OUT, 1/2 TRANSVERSE, ADJUSTABLE HEIGHT, 500LB CAPACITY
- (1) 0042436 SHELF, ADJUSTABLE, 1/2 DEPTH OF TRANSVERSE COMPT



REAR COMPARTMENT R1 CONTAINS THE FOLLOWING:

COMPARTMENT R1 CONTAINS:

- (1) 0041757 TRAY SLIDE OUT, TILT 30°, STD DEPTH COMPT, 200# CAPACITY
- (1) 0041694 TRAY SLIDE OUT, STD DEPTH, FLOOR MOUNTED, 2 SIDES, 500LB CAPACITY
- (1) 0041695 DIVIDER FOR SHELF FOR TRAY (24" X 36")
- (2) 0006990 REEL, HOSE, HYDRAULIC, ELECTRIC REWIND, HANNAY #E2016-17-18 WITH CAPACITY FOR 100' OF .25" I.D. DUAL HYDRAULIC HOSE W/FULL WIDTH REEL BRKT AND FULL WIDTH GUIDE
- (2) 0589547 HOSE, HYDRA., INT, 100', TWIN LINE, CONNECTION, PMFD



DRIVER'S SIDE COMPARTMENTS CONTAIN THE FOLLOWING:

COMPARTMENT D1 CONTAINS:

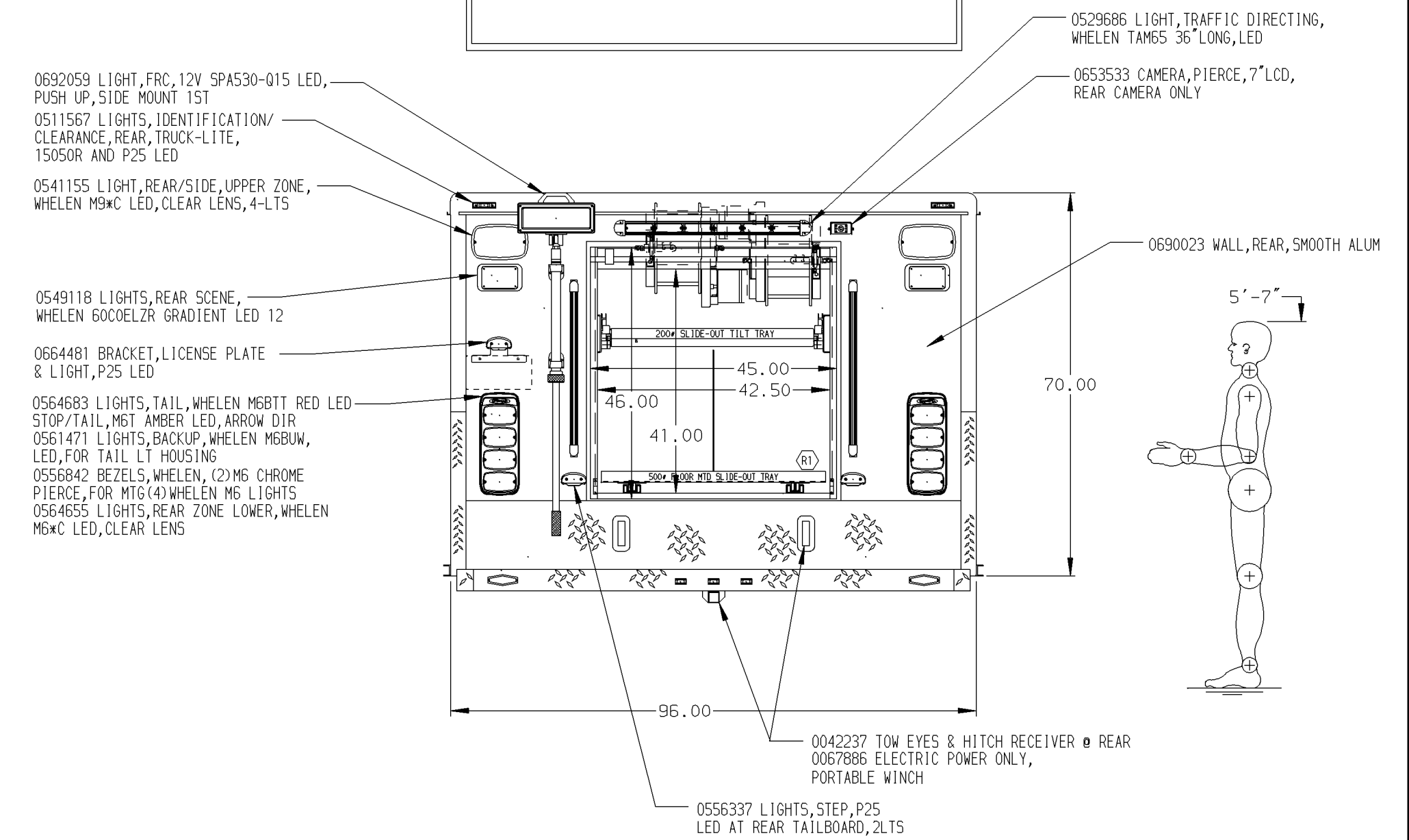
- 0586673 HOPPER, OIL DRY, INSTALLED IN A COMPT, W/FLIP DOWN CHUTE, 250#
- (2) 0041690 SHELF, ADJUSTABLE, 500 LB CAP., STD DEPTH COMPT

COMPARTMENT D2 CONTAINS:

- (1) 0052734 TRAY SLIDE OUT, TWO WAY, TRANSVERSE COMPT, FLOOR MOUNTED, 500# CAPACITY
- (1) 0050185 RACK, BACKBOARD STORAGE (4'H X 18'W)
- (1) 0051465 RACK, STOKES BASKET STORAGE
- (1) 0663650 POLE, PIKE 4" FIBERGLASS, D HANDLE
- (1) 0502990 POLE, PIKE 6" FIBERGLASS (AKRON)
- (4) 0043658 TUBES, ALUM, PIKE POLE STORAGE-SPECIAL LOCATION
- (1) 0545167 TROUGH FOR D-HANDLED PIKE POLE

COMPARTMENT D3 CONTAINS:

- (1) 0042447 TRAY SLIDE OUT, 1/2 TRANSVERSE, ADJUSTABLE HEIGHT, 500LB CAPACITY
- (1) 0052735 TOOL BOARD, ADDED TO SLIDE TRAY, 1/2 DEPTH TRANSVERSE & STD, TRAY NOT INCLUDED
- (3) 0042405 AIR BOTTLE HOLDERS WITH TRACKS (4 BRKT'S)
- (1) 0041694 TRAY SLIDE OUT, STD DEPTH, FLOOR MOUNTED, 2 SIDES, 500LB CAPACITY



ALUMINUM BODY

NOTE
DIMENSIONS SHOWN ARE APPROXIMATE AND ARE SUBJECT TO MINOR DEVIATIONS AS MAY OCCUR OR BE NECESSARY IN CONSTRUCTION. MINOR DETAILS NOT SHOWN.

08NOV13	DTA	VKO	CHASSIS DATA
24SEP13	DTA	VKO	CHASSIS FORD
02AUG13	DTA	VKO	MODEL F550 4X4
REV.	DATE	BY	CHK'D

<p>Pierce MANUFACTURING INC. BRADENTON, FLORIDA</p>		JOB NO.	27026
		DATE	27JUN13
TITLE	12 FT CONTENDER RESCUE NON-WALKIN	SCALE	1:24
FOR	ONALASKA FIRE DEPARTMENT ONALASKA, WISCONSIN	DRAWN BY	JAF
DRWG. NO.	27026AD	CHK'D BY	KBO
		SHEET NO.	1 OF 1
		SHEET SIZE	D