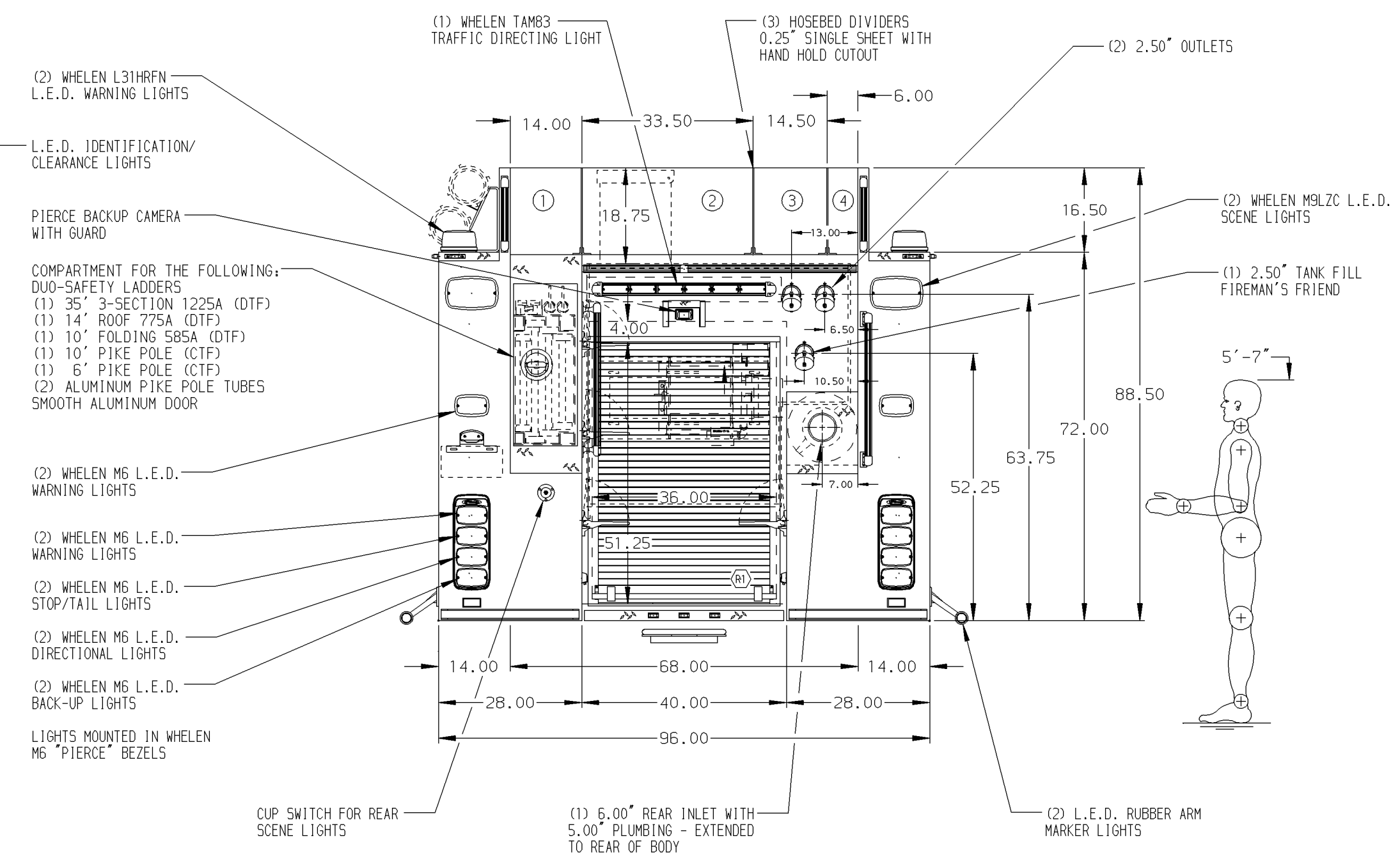
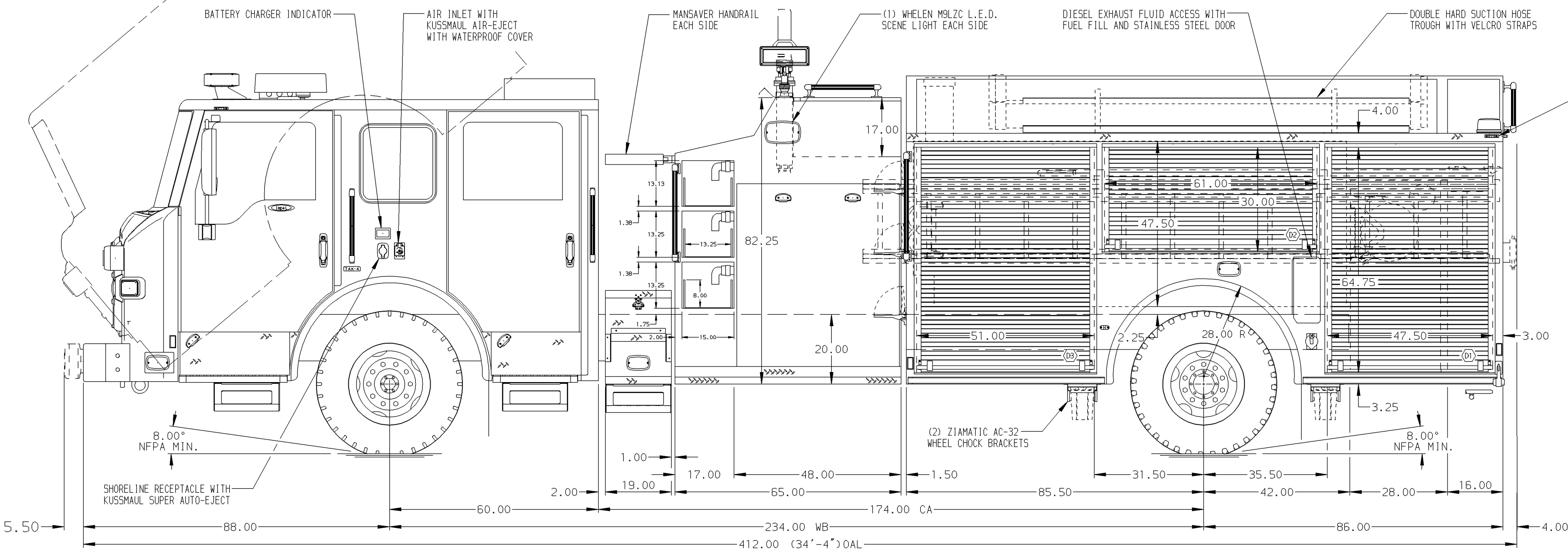


- HOSEBED CAPACITIES**
- 1 500' OF 2.50" D.J. POLY HOSE
  - 2 800' OF 5.00" D.J. POLY HOSE
  - 3 500' OF 2.50" D.J. POLY HOSE
  - 4 200' OF 2.50" D.J. POLY HOSE



**ALUMINUM BODY**

**NOTE**  
 DIMENSIONS SHOWN ARE APPROXIMATE AND ARE SUBJECT TO MINOR DEVIATIONS AS MAY OCCUR OR BE NECESSARY IN CONSTRUCTION. MINOR DETAILS NOT SHOWN.

1. ONSPOT AUTOMATIC TIRE CHAINS TO BE PROVIDED AT REAR
2. ALUMINUM TREADPLATE EXTERIOR REAR WALL OF CAB
3. STAINLESS STEEL SCUFFPLATE ON EACH CAB DOOR JAMB
4. MOUNTING BASE FOR ANTENNA LOCATED PER SHOP ORDER
5. BATTERY CHARGER LOCATED BEHIND DRIVER'S SEAT
6. L.E.D. PERIMETER SCENE LIGHTS LOCATED PER SHOP ORDER
7. PIERCE L.E.D. DUAL COMPARTMENT LIGHT STRIPS LOCATED PER SHOP ORDER
8. PAINTED SHELF TRACKS LOCATED IN COMPARTMENT X
9. ADJUSTABLE SHELVES (FULL DEPTH/FULL WIDTH) - ONE IN COMPARTMENTS D1, D2, D3, P2 AND TWO IN P3
10. ADJUSTABLE SLIDE-OUT TRAYS - ONE IN COMPARTMENTS D1, D3 AND P3
11. ALUMINUM SLIDE-OUT TOOLBOARD WITH PEGBOARD PATTERN IN COMPARTMENT P1
12. PARTITION BETWEEN COMPARTMENTS D1/R1 AND P1/R1
13. ALL FOLDING STEPS TO BE TRIDENT WITH INTEGRATED L.E.D. LIGHT UNLESS SPECIFIED
14. THREE ADDITIONAL SPEEDLAY POLY TRAYS SHIPPED LOOSE
15. CIRCUIT BREAKER AND SUB-FEED PANELS IN COMPARTMENT D3
16. ONE HANNAY ELECTRIC REWIND CABLE REEL MODEL ECR1620-17-18 WITH 250' OF 10/3 CABLE IN COMPARTMENT R1
17. PERFORATED OUTER EDGE ON RUNNING BOARDS, TAILBOARD, WALKWAY AND WALKWAY STEPS
18. THREE SENTREX 6-PLACE RECEPTACLE STRIPS IN CAB PER SHOP ORDER

**CUSTOMER APPROVAL**

APPROVED BY: \_\_\_\_\_  
 DATE: \_\_\_\_\_



JOB NO. 28297

SCALE 1:24 DATE

REV	DATE	BY	CH	IMPEL	TITLE	FOR	DWG NO.
05DEC14	JRO	JBO	MAKE		1500-D-1000 GALLONS WATER, 171" PUMPER BODY	WAUSAU FIRE DEPARTMENT	
31OCT14	JRO	JBO	PIERCE		SPEEDLAYS, LADDERS BETWEEN TANK & SIDESHEET, DELUGE	WAUSAU, WISCONSIN	
24SEP14	JRO	SHA	MODEL				

28297AD

DRAWN BY JRO 17SEP14

CHECKED BY THI 18SEP14

SHEET SIZE D SHEET NO. 1 OF 1