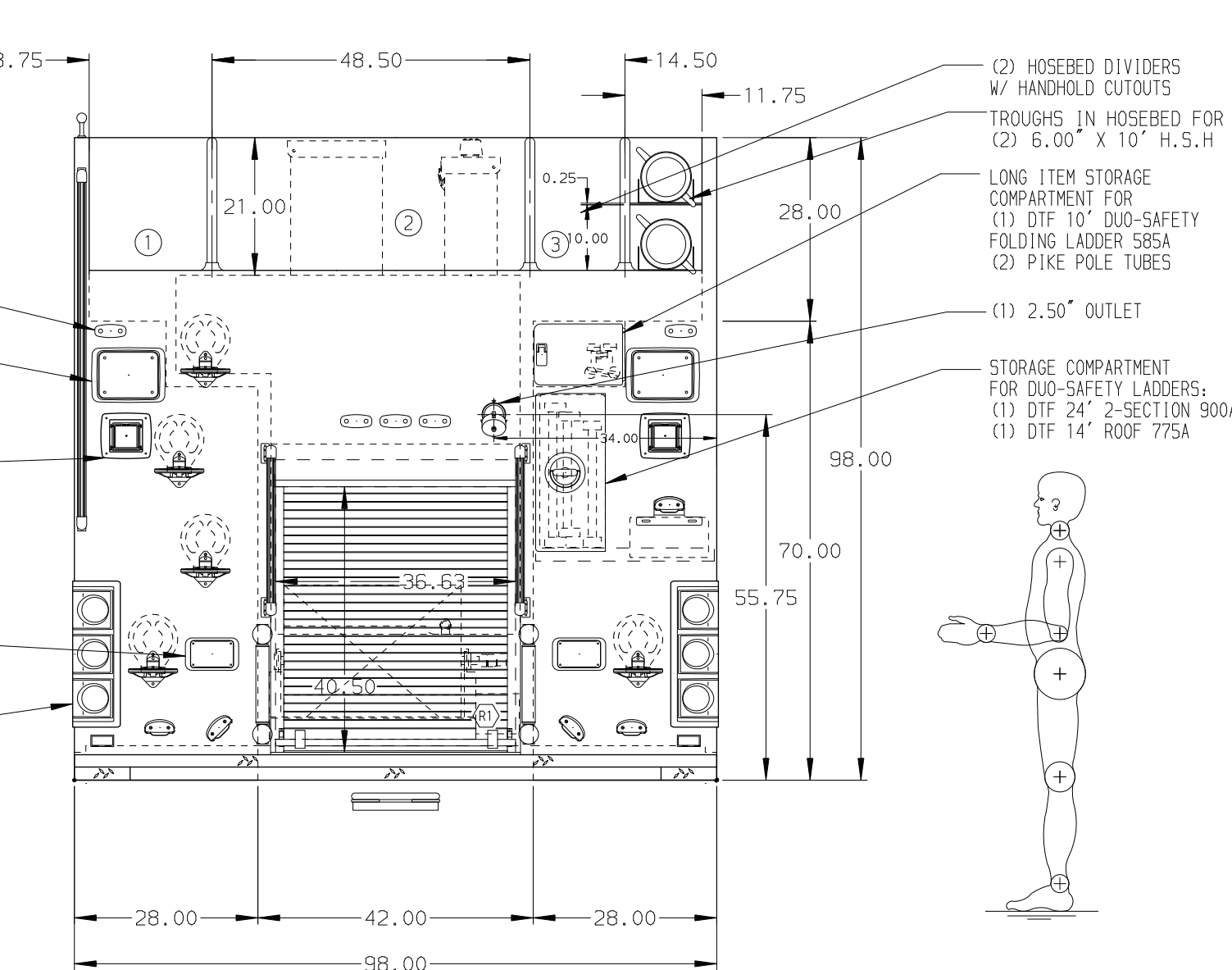


- HOSEBED CAPACITIES**
- 1 WALKWAY AREA
 - 2 1000' OF 4.00" D.J. POLY HOSE
 - 3 400' OF 3.00" D.J. POLY HOSE



ALUMINUM BODY

NOTE
DIMENSIONS SHOWN ARE APPROXIMATE AND ARE SUBJECT TO MINOR DEVIATIONS AS MAY OCCUR OR BE NECESSARY IN CONSTRUCTION. MINOR DETAILS NOT SHOWN.

- 1. CTF WHEEL CHOCKS AND MOUNTING BRACKETS
- 2. MOUNTING BASE FOR ANTENNA LOCATED PER SHOP ORDER
- 3. BATTERY CHARGER LOCATED IN COMPARTMENT D3
- 4. PERIMETER SCENE LIGHTS LOCATED PER SHOP ORDER
- 5. 12V L.E.D. 63.00" LIGHT STRIP ON THE FRONT OF THE HOSE BED
- 6. PIERCE L.E.D. COMPARTMENT LIGHT STRIPS LOCATED PER SHOP ORDER
- 7. ONE ADJUSTABLE FULL WIDTH/FULL DEPTH SHELF IN COMPARTMENTS D1, D2, P1, & P3
- 8. ONE PAINTED ADJUSTABLE TILTING SLIDE-OUT TRAY IN COMPARTMENT R1
- 9. ONE FLOOR MOUNTED SLIDE-OUT TRAY IN COMPARTMENTS D1, P1, & P3
- 10. ONE ADJUSTABLE TOOL BOARD MOUNTED TO SLIDE-OUT TRAY IN COMPARTMENT P3
- 11. ONE ALUMINUM SLIDE-OUT TOOL BOARD IN COMPARTMENT D3
- 12. ALL FOLDING STEPS TO BE TRIDENT WITH INTEGRATED L.E.D. LIGHT UNLESS SPECIFIED
- 13. AIR INLET W/ DISCONNECT FITTING LOCATED IN D5 STEP WELL
- 14. 5/STL FENDER CROWNS FRONT AND REAR
- 15. HANNAY BOOSTER REEL MODEL 58EF34-23-24 LOCATED IN COMPARTMENT R1 WITH CAPACITY FOR 200' OF 1.00" BOOSTER HOSE

12SEP15	COL	COR	CHASSIS DATA
27AUG15	COL	COR	MAKE
20AUG15	LST	COR	PIERCE
14AUG15	LST	JBO	MODEL
23JUN15	COL	SMA	SABER
REV	DATE	BY	CH

		JOB NO.	29017
		SCALE	DATE
TITLE	1500-D-1000 GAL POLY W/30 GAL FOAM CELL, 189" RESCUE (2)XLAYS, (1)DEADLAY, BOOSTER REEL, LADDERS THRU BODY	DRAWN BY	COL
FOR	MARLOW FIRE DEPARTMENT MARLOW, OKLAHOMA	CHECKED BY	SMA
DWG NO.	29017AD	SHEET SIZE	SHEET NO.
		D	1 OF 1