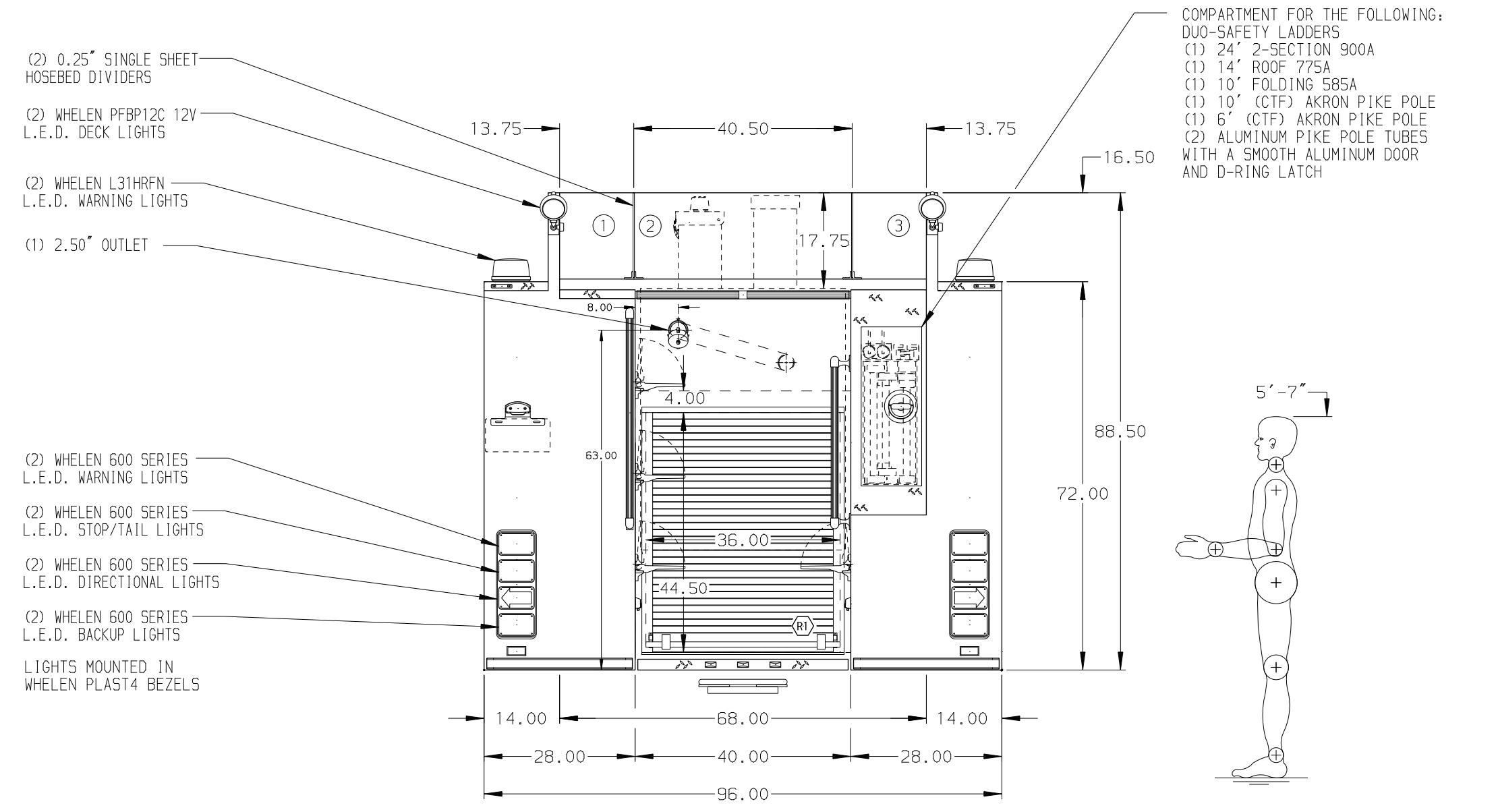
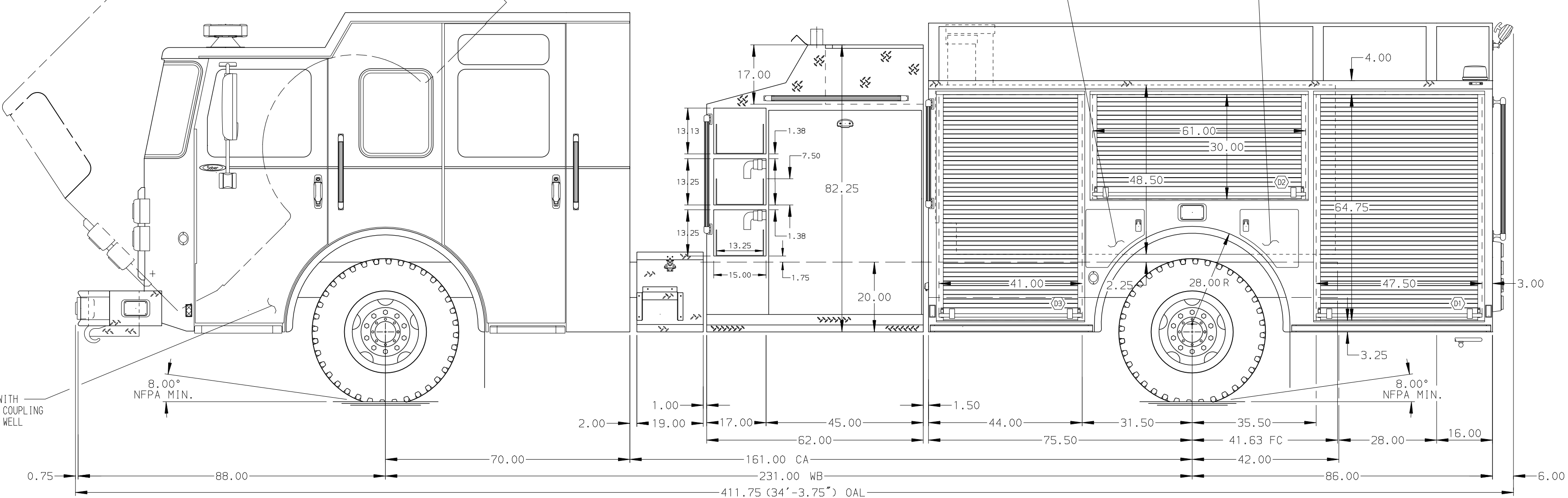


- HOSEBED CAPACITIES
- ① 500' OF 2.50" D.J. POLY HOSE
 - ② 1000' OF 5.00" D.J. POLY HOSE
 - ③ 500' OF 2.50" D.J. POLY HOSE



ALUMINUM BODY

NOTE
DIMENSIONS SHOWN ARE APPROXIMATE AND ARE SUBJECT TO MINOR DEVIATIONS AS MAY OCCUR OR BE NECESSARY IN CONSTRUCTION. MINOR DETAILS NOT SHOWN.

REV	DATE	BY	CH	SABER FR
09MAY16	JAF	CAG		
14APR16	JLA	CAG		

		JOB NO.	29577
		SCALE	DATE
TITLE	1500-D-770P, 750G WTR W/20G FOAM, 161" BODY TOP CONTROL, 45" (2) 1.5" SPEEDLAYS, (1) DEADLAY, DELUGE	DRAWN BY	TES
MAKE	PIERCE	CHECKED BY	KBO
FOR	PIERCE FIELD UNIT BRADENTON, FLORIDA	SHEET SIZE	SHEET NO.
DWG NO.	29577AD	D	1 OF 1