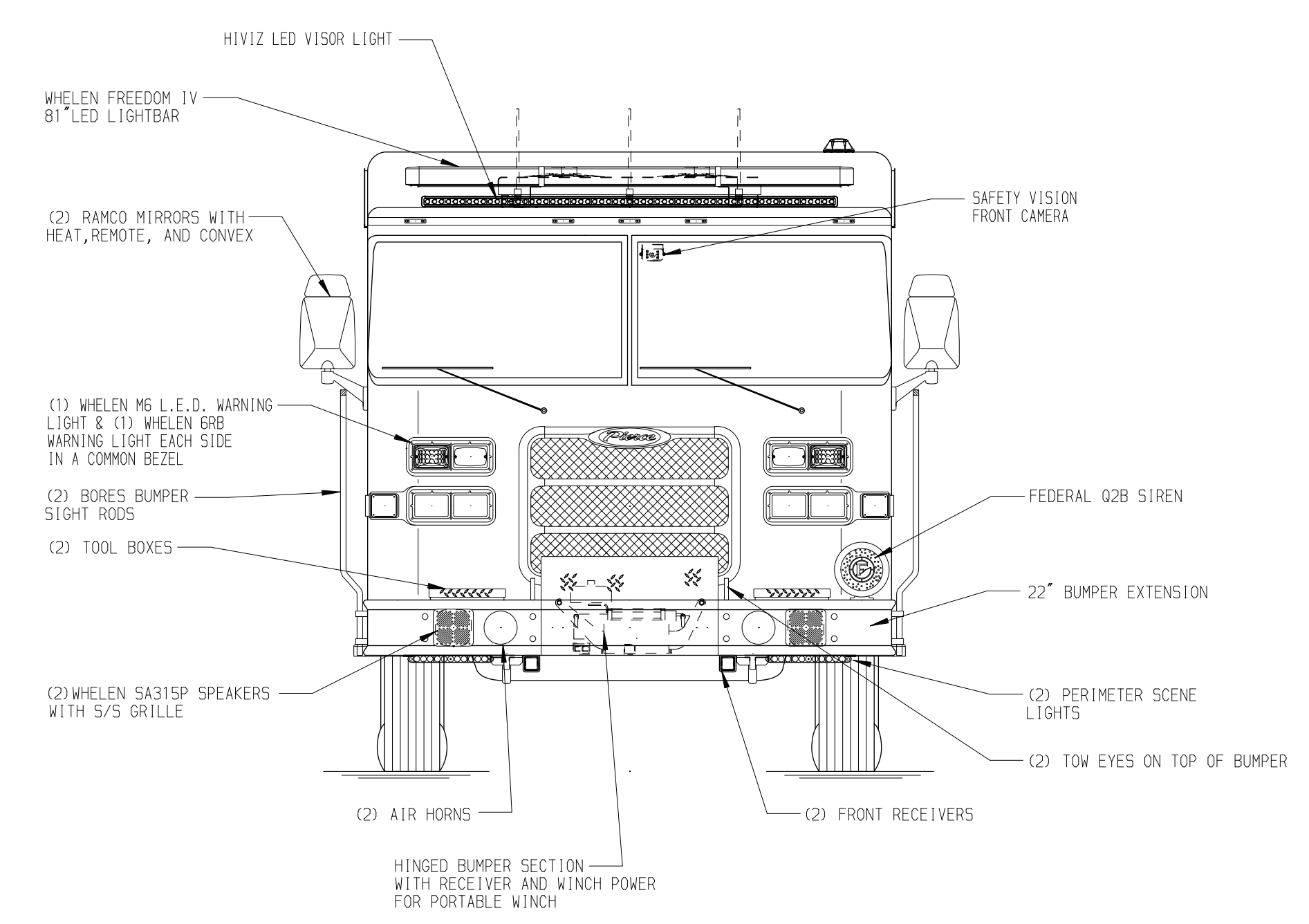
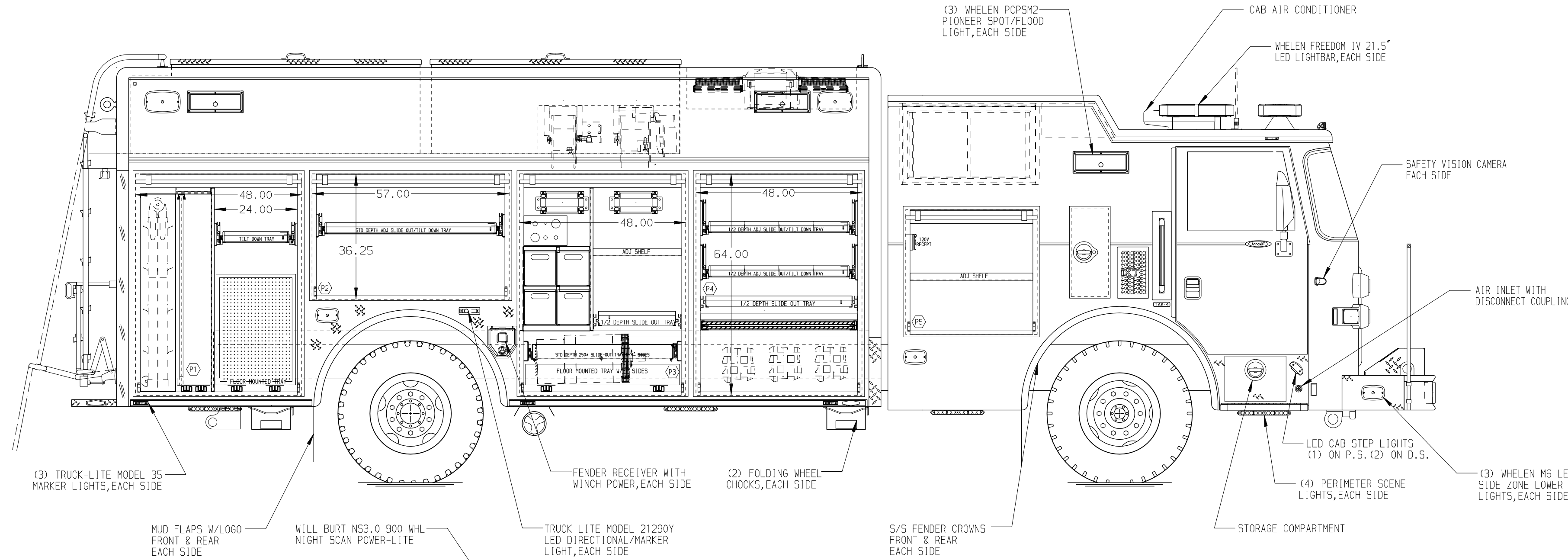


PASSENGER'S SIDE COMPARTMENTS CONTAIN THE FOLLOWING:

- COMPARTMENT P1 CONTAINS:**
 - (1) RACK FOR LITTLE GIANT LADDER
 - (1) STD DEPTH ADJ SLIDE OUT TOOLBOARD
 - (1) VERTICAL COMPARTMENT DIVIDER
 - (1) STD DEPTH ADJ SLIDE OUT/TILT TRAY
 - (1) FLOOR MOUNTED TRAY WITH TOOLBOARD
- COMPARTMENT P2 CONTAINS:**
 - (1) STD DEPTH ADJ SLIDE OUT/TILT TRAY
- COMPARTMENT P3 CONTAINS:**
 - (1) VERTICAL COMPARTMENT DIVIDER
 - (1) 1/2 DEPTH ADJ SLIDE OUT TRAY
 - (1) AIR SYSTEM CONTROL PANEL
 - (1) FLOOR MOUNTED TRAY W/SPECIAL SIDES
 - (1) LOW PRESSURE AIR REEL W/150' OF HOSE
 - (1) ELECTRIC CORD REEL W/200' OF 12/3 YELLOW CORD
 - (1) HORIZONTAL FLOOR EXTENSION
 - (8) POLY TOOL BOXES WITH RACK (9" WIDE) (2-BOXES DEEP)
 - (1) STD DEPTH SLIDE OUT TRAY W/4" SIDES
 - (1) STD DEPTH ADJ SHELF

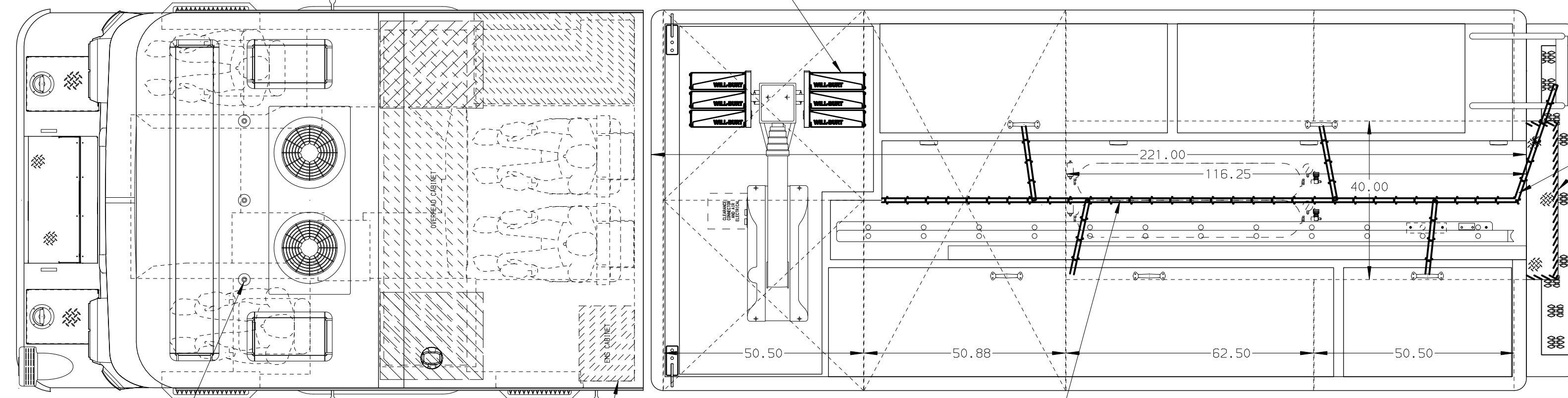
- COMPARTMENT P4 CONTAINS:**
 - (2) 1/2 DEPTH ADJ SLIDE OUT/TILT TRAYS W/3 EQUALLY SPACED DIVIDERS
 - (1) HORIZONTAL FLOOR EXTENSION
 - (1) RACK FOR 2 SHEETS OF PLYWOOD
 - CARGO RETENTION NETTING
 - (1) 1/2 DEPTH ADJ SLIDE OUT TRAY
 - (1) VERTICAL REAR WALL DIVIDER

- COMPARTMENT P5 CONTAINS:**
 - (1) STD DEPTH ADJ SHELF
 - (1) 20A, 120V DUPLEX RECEPTACLE



REAR COMPARTMENT CONTAINS THE FOLLOWING:

COMPARTMENT R1 CONTAINS:
 - (1) RACK WITH CARGO NET FOR THE FOLLOWING ITEMS:
 - (2) STOKES BASKETS
 - (2) BACKBOARDS
 - (2) LUMBER STORAGE RACKS
 - (1) 48" DP ADJ SLIDE OUT TRAY
 - (1) 110" DP ADJ SLIDE OUT TRAY WITH PIKE POLE TUBE
 - (1) FLOOR MOUNTED TRAY



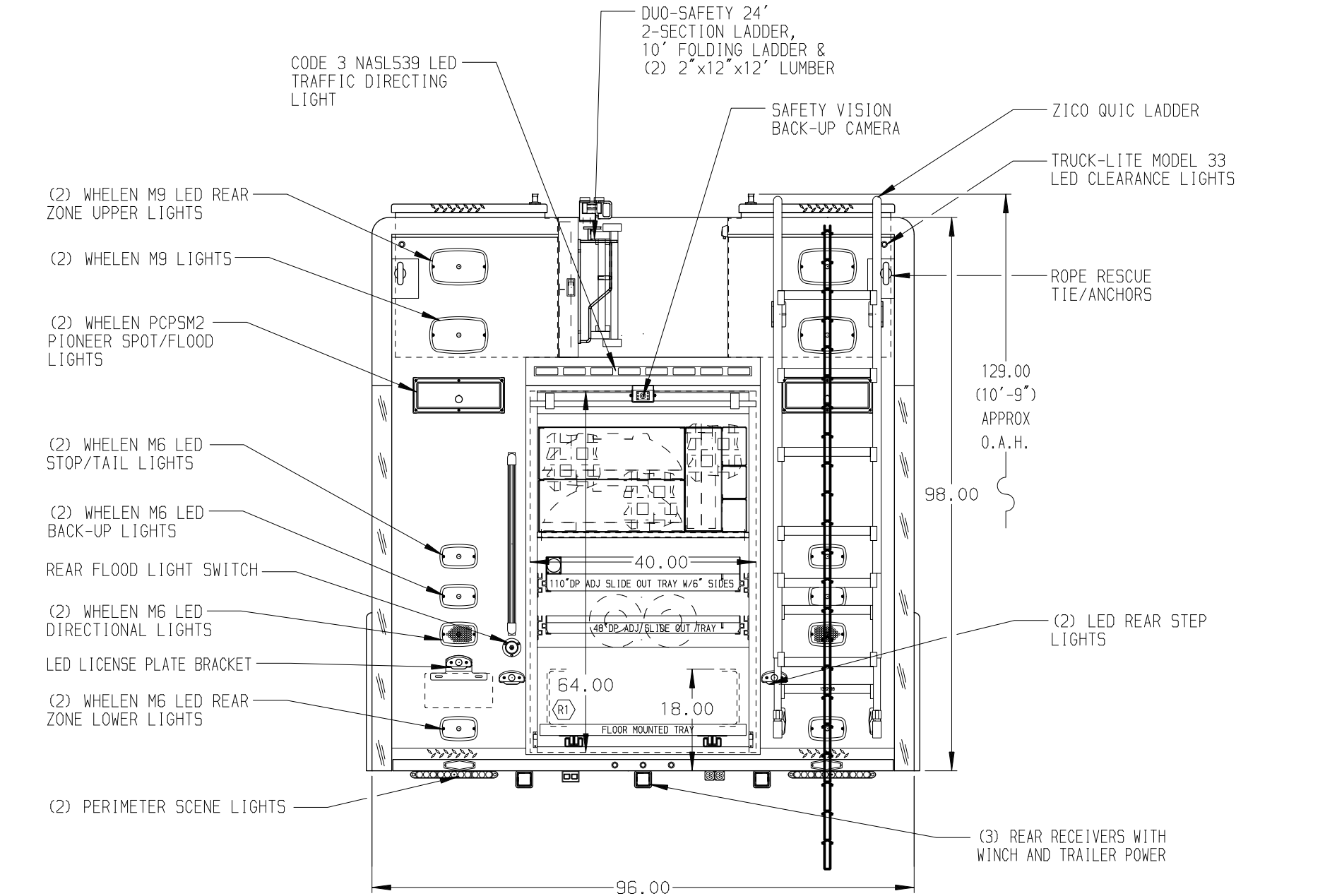
DRIVER'S SIDE COMPARTMENTS CONTAIN THE FOLLOWING:

COMPARTMENT D1 CONTAINS:
 - (2) HYDRAULIC REELS W/100' OF DUAL HOSE
 - (1) STD DEPTH ADJ SLIDE OUT/TILT TRAY
 - (1) HORIZONTAL COMPARTMENT DIVIDER
 - (1) FLOOR MOUNTED TRAY WITH TOOLBOARD
 - (1) 30A, 240V RECEPTACLE
 - (1) VERTICAL COMPARTMENT DIVIDER
 - MOUNTING BRACKETS FOR CUSTOMER INSTALLED HURST P-650-E HYDRAULIC POWER UNIT

COMPARTMENT D2 CONTAINS:
 - (1) VERTICAL COMPARTMENT DIVIDER
 - (1) RACK FOR 12 SCBA BOTTLES WITH TREADPLATE COVER (8.25" SQ OPENINGS)
 - (1) CIRCUIT BREAKER PANEL
 - (1) GENERATOR METER PANEL
 - (1) SUB FEED BOX
 - (1) NIGHT SCAN CONTROLLER

COMPARTMENT D3 CONTAINS:
 - (1) RACK FOR 14 AIR BAGS WITH STRAPS
 - (1) VERTICAL COMPARTMENT DIVIDER
 - (1) HORIZONTAL FLOOR EXTENSION
 - (1) 1/2 DEPTH ADJ SLIDE OUT TRAY
 - (1) LOW PRESSURE AIR REEL W/150' OF HOSE
 - (1) FLOOR MOUNTED TRAY
 - (1) RACK FOR SCBA BOTTLE
 - (1) STD DEPTH ADJ SHELF

COMPARTMENT D4 CONTAINS:
 - (2) 1/2 DEPTH SLIDE OUT TOOLBOARDS
 - (1) VERTICAL COMPARTMENT DIVIDER
 - (1) SLIDE OUT TOOL DRAWER
 - (1) FLOOR MOUNTED TRAY
 - (1) 1/2 DEPTH SLIDE OUT TRAY (INVERTED)
 - (1) 1/2 DEPTH ADJ SLIDE OUT/TILT TRAY
 - (1) ELECTRIC CORD REEL W/200' OF 12/3 YELLOW CORD
 - (1) HORIZONTAL FLOOR EXTENSION
 - (1) 20A, 120V DUPLEX RECEPTACLE
 - (1) KUSSMAUL PUMP PLUS 1200 CHARGER
 - (1) RACK FOR 2 SHEETS OF PLYWOOD
 - (1) VERTICAL REAR WALL DIVIDER
 - (1) CAB LIFT CONTROLLER



NOTE:
 DIMENSIONS SHOWN ARE APPROXIMATE AND ARE SUBJECT TO MINOR DEVIATIONS AS MAY OCCUR OR BE NECESSARY IN CONSTRUCTION. MINOR DETAILS NOT SHOWN.

- NOTES:**
- AIR INLET WITH DISCONNECT COUPLING LOCATED IN THE PASSENGER'S STEP COMPARTMENT
 - FLOOR IN CAB AND CREW CAB TO BE PADDED RUBBER
 - ONSPOT AUTOMATIC TIRE CHAINS
 - POLISHED 5/5 SCUFFPLATES AT CAB DOOR THRESH
 - PULL STRAPS FOR ALL COMPARTMENT ROLL-UP DOORS
 - ALUMINUM 4-WAY ON FRONT OF BODY AND LOWER FRONT CORNERS
 - (2) 9,000# TIE DOWNS FOR RECEIVERS
 - TURF TILE MATTING ON ALL COMPARTMENT SHELVES, TRAYS, AND ON FLOORS IN D2, P2 AND P4
 - PIERCE LED LIGHTS IN ALL BODY COMPARTMENTS
 - ONAN 30kW SINGLE PHASE PTO DRIVEN GENERATOR WITH SPLASH GUARD LOCATED BETWEEN THE FRAME RAILS
 - 5/5 "L"-SHAPED GUARD OVER ALL ROLL-UP DOORS
 - WARN #9,000 PORTABLE RECEIVER STYLE WINCH
 - BATTERY CHARGE INDICATOR LOCATED ON DRIVER'S SEAT WITH BRACKET
 - QUICK DISCONNECTS FOR BATTERY JUMPER LOCATED IN P.S. STEP COMPARTMENT
 - BRUSHED 5/5 SCUFFPLATE ON REAR CORNERS OF THE BODY
 - ALUMINUM TREADPLATE ON BODY FENDER PANELS
 - 20A, 120V 4-PLACE DUPLEX RECEPTACLE BETWEEN OFFICER'S SEAT AND EMS CABINET
 - 20A, 120V 6-PLACE RECEPTACLE LOCATED ON REAR WALL OF THE DS REAR FACING EMS CABINET

(SIDE ROLL & FRONTAL IMPACT PROTECTION)

CLEAR DOOR WIDTH KEY

AMOR ROLL UP DOORS:	-1 7/8"
CURTAIN ROLL UP DOORS:	-2 3/4"
PIERCE DOUBLE LAP DOORS:	-4 1/4"
PIERCE LIFT-UP LAP DOORS:	-1 1/2"
(EX: 60" F-F = 1 7/8" = 58 1/8" CLEAR)	
(F-F) = FRAME TO FRAME	

	MANUFACTURING INC.	JOB NO.	30459 01-02
		SCALE	1:24
		DATE	
TITLE	HEAVY DUTY RESCUE NON-WALKIN	DRAWN BY	DHE 27JAN17
FOR	CITY OF PITTSBURGH EMS PITTSBURGH, PA	CHECKED BY	AZU 30JAN17
DWG NO.		SHEET SIZE	
		SHEET NO.	1 OF 1