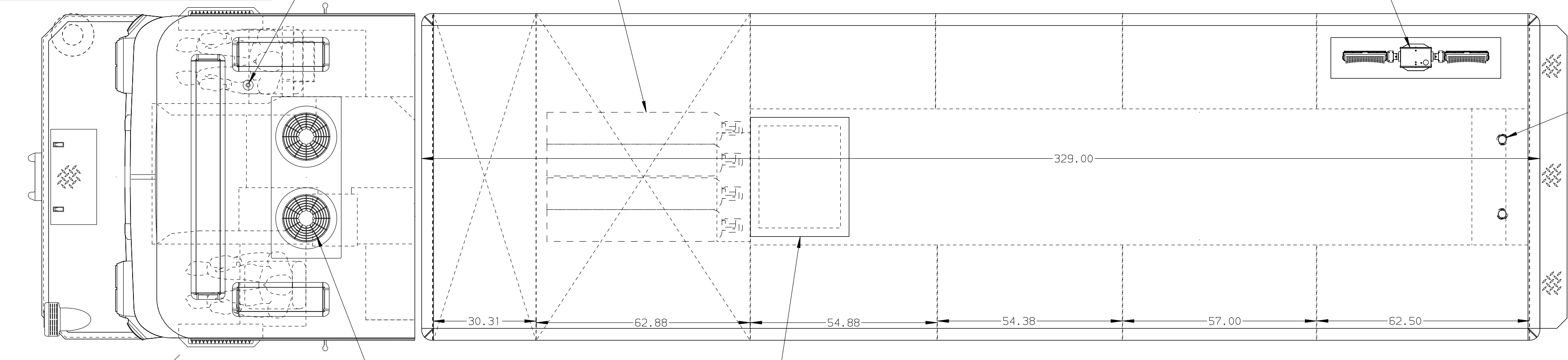
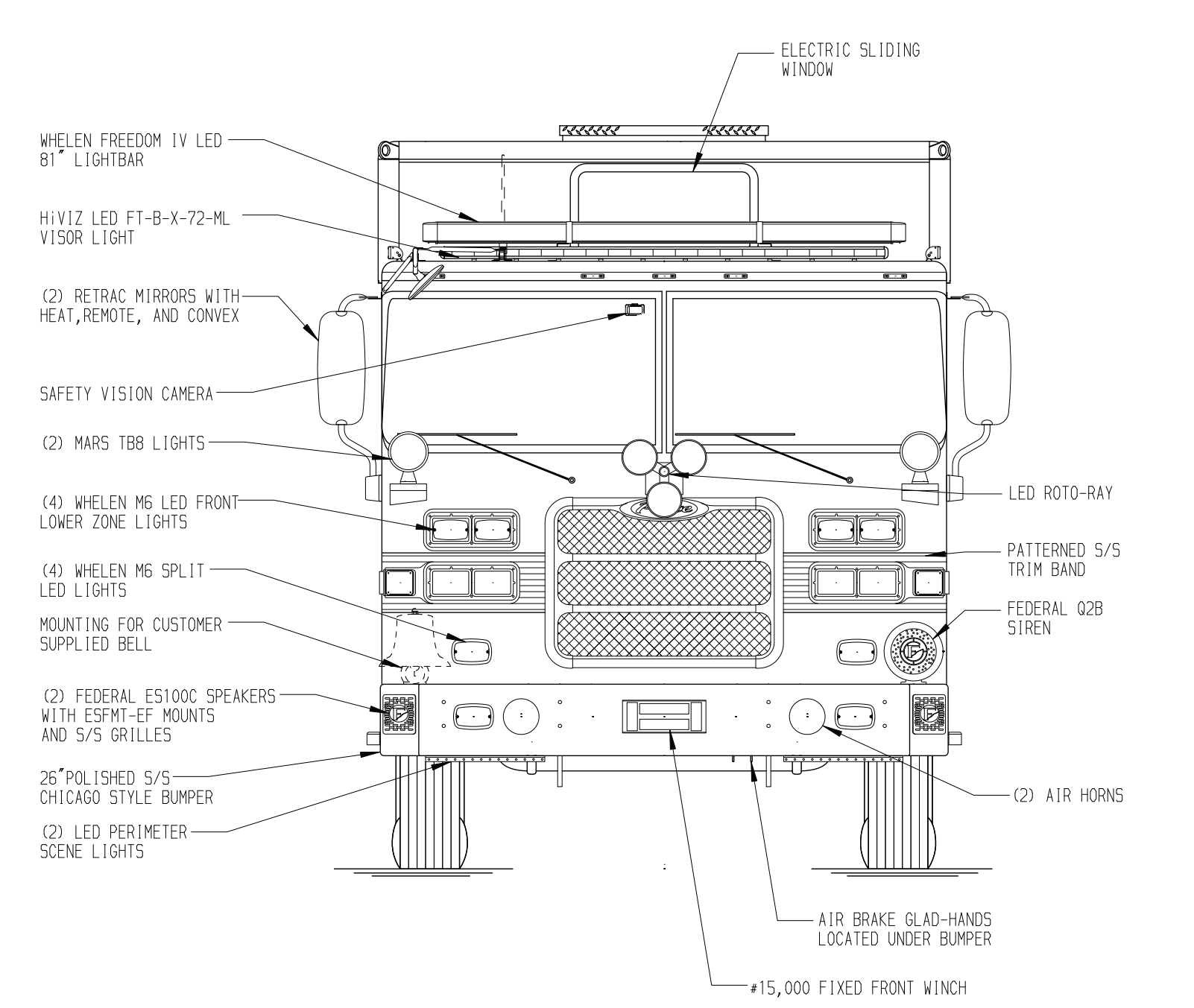
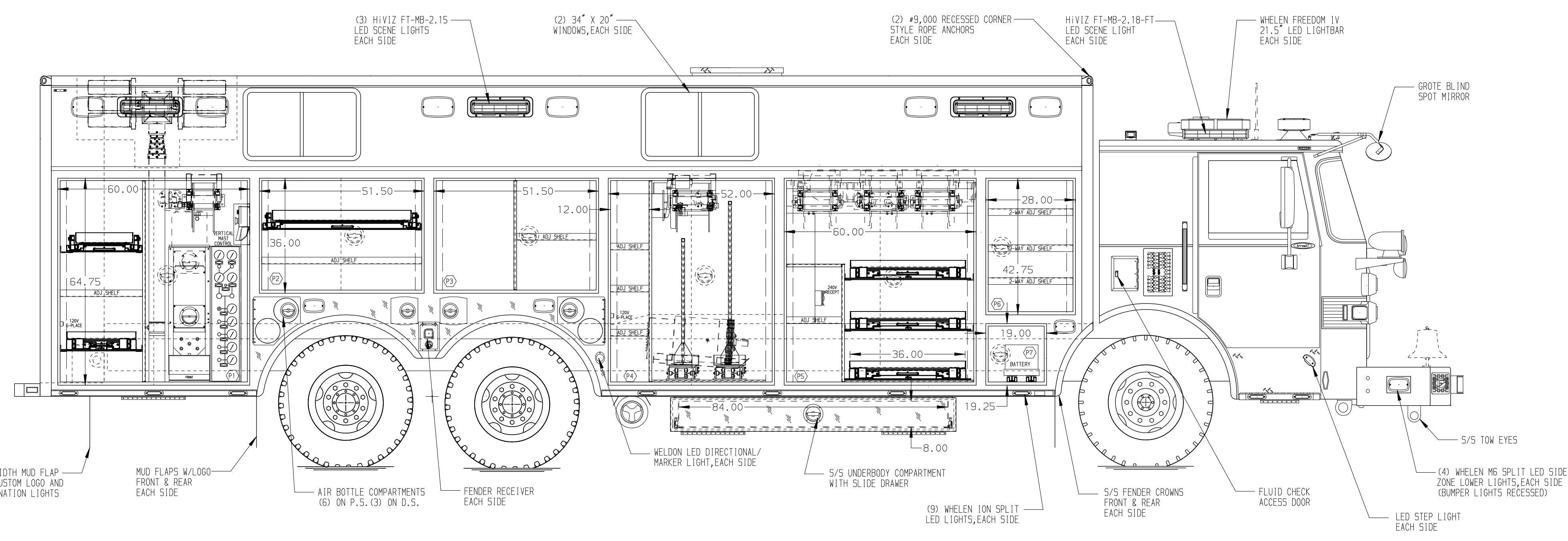


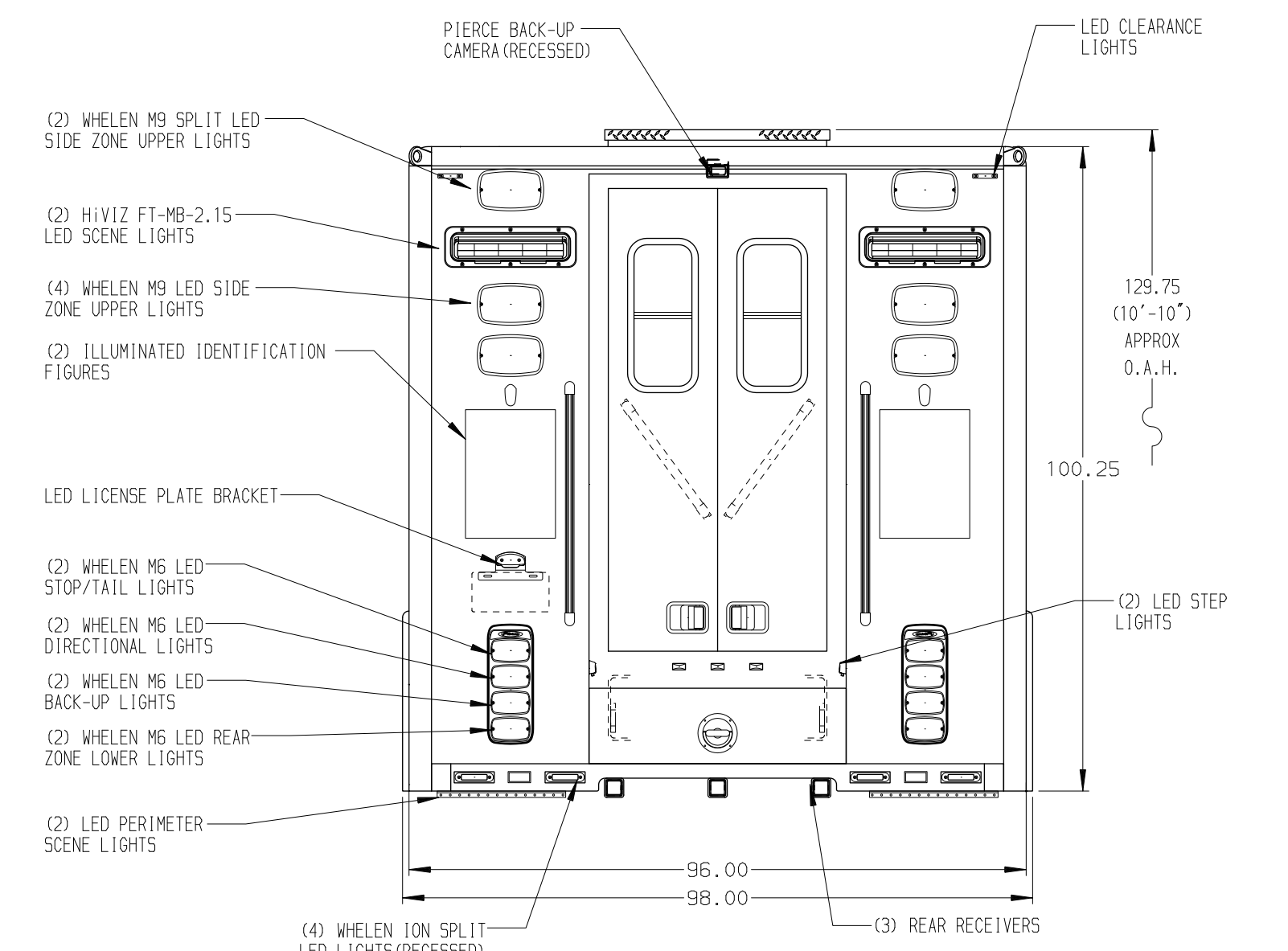
**PASSENGER'S SIDE COMPARTMENTS CONTAIN THE FOLLOWING:**

- COMPARTMENT P1 CONTAINS:**
- (1) VERTICAL COMPARTMENT PEGBOARD DIVIDER
  - (1) STD DEPTH ADJ SHELF
  - (1) STD DEPTH ADJ SLIDE OUT TRAY WITH ON-SCENE SLIDES
  - (1) 20A, 120V 6-PLACE RECEPTACLE STRIP
  - (1) CASCADE SYSTEM CONTROL PANEL
  - (1) "SHRASEAVER" 2-BOTTLE FILL ENCLOSURE
  - (1) LOW PRESSURE AIR REEL W/150' OF HOSE
  - (1) VERTICAL MAST CONTROLLER
  - (1) LIGHT MAST CONTROLLER
  - (1) STD DEPTH ADJ SLIDE OUT/TILT TRAY WITH ON-SCENE SLIDES
  - (1) FOLD-OUT ROLLER GUIDE
- COMPARTMENT P2 CONTAINS:**
- (1) STD DEPTH ADJ SHELF
  - (1) STD DEPTH ADJ SLIDE OUT/TILT TRAY WITH ON-SCENE SLIDES
- COMPARTMENT P3 CONTAINS:**
- (1) VERTICAL COMPARTMENT DIVIDER
  - (1) STD DEPTH ADJ SHELF
- COMPARTMENT P4 CONTAINS:**
- (1) VERTICAL COMPARTMENT PEGBOARD DIVIDER
  - (3) STD DEPTH ADJ SHELVES
  - (2) STD DEPTH SLIDE OUT TOOLBOARDS WITH ON-SCENE SLIDES
  - (1) ELECTRIC CORD REEL WITH 200' OF 10/3 BLACK CORD
  - (1) 20A, 120V 6-PLACE RECEPTACLE STRIP
  - (1) FOLD-OUT ROLLER GUIDE
- COMPARTMENT P5 CONTAINS:**
- (1) HORIZONTAL DIVIDER
  - (1) VERTICAL COMPARTMENT DIVIDER
  - (1) STD DEPTH ADJ SHELF
  - (2) STD DEPTH ADJ SLIDE OUT TRAYS WITH ON-SCENE SLIDES
  - (1) STD DEPTH FLOOR TRAY WITH ON-SCENE SLIDES
  - (2) FOLD OUT ROLLER GUIDES
  - (2) 20A, 240V T.L. RECEPTACLES (COVER FRAME)
  - (3) HYDRAULIC REELS W/100' OF HOSE EACH
- COMPARTMENT P6 CONTAINS:**
- (3) 2-WAY ADJ SHELVES WITH DOWNWARD FLANGES
- COMPARTMENT P7 CONTAINS:**
- CHASSIS BATTERIES



**DRIVER'S SIDE COMPARTMENTS CONTAIN THE FOLLOWING:**

- COMPARTMENT D1 CONTAINS:**
- (2) STD DEPTH ADJ SHELVES
  - (1) STD DEPTH ADJ SLIDE OUT/TILT TRAY WITH ON-SCENE SLIDES
  - (1) STD DEPTH FLOOR TRAY WITH ON-SCENE SLIDES
  - (1) INVERTER FOR ILLUMINATED IDENTIFICATION
  - (1) 20A, 120V 6-PLACE RECEPTACLE STRIP
  - (1) LOW PRESSURE AIR REEL W/150' OF HOSE
  - (1) FOLD-OUT ROLLER GUIDE
- COMPARTMENT D2 CONTAINS:**
- (1) VERTICAL COMPARTMENT DIVIDER
  - (1) CIRCUIT BREAKER PANEL
  - (1) GENERATOR METER PANEL
  - (1) 20A, 120V 4-PLACE RECEPTACLE
  - (1) VOGUE LUBE RESERVOIR
- COMPARTMENT D3 CONTAINS:**
- (1) VERTICAL COMPARTMENT DIVIDER
  - (1) STD DEPTH ADJ SHELF
- COMPARTMENT D4 CONTAINS:**
- (1) STD DEPTH ADJ SHELF
  - (1) ELECTRIC CORD REEL WITH 200' OF 10/3 BLACK CORD
  - (1) 20A, 120V 6-PLACE RECEPTACLE STRIP
  - (1) 3-DRAWER C-TECH CABINET
  - (1) STD DEPTH ADJ SLIDE OUT TRAY WITH ON-SCENE SLIDES
  - (1) FOLD-OUT ROLLER GUIDE
- COMPARTMENT D5 CONTAINS:**
- (1) HORIZONTAL DIVIDER
  - (1) VERTICAL COMPARTMENT DIVIDER
  - (1) STD DEPTH ADJ SHELF
  - (2) STD DEPTH ADJ SLIDE OUT TRAYS WITH ON-SCENE SLIDES
  - (1) STD DEPTH FLOOR TRAY WITH ON-SCENE SLIDES
  - (2) FOLD OUT ROLLER GUIDES
  - (2) 20A, 240V T.L. RECEPTACLES (COVER FRAME)
  - (3) HYDRAULIC REELS W/100' OF HOSE EACH
- COMPARTMENT D6 CONTAINS:**
- (3) 2-WAY ADJ SHELVES WITH DOWNWARD FLANGES
- COMPARTMENT D7 CONTAINS:**
- CHASSIS BATTERIES
  - (1) CAB LIFT CONTROLLER



**NOTE**  
DIMENSIONS SHOWN ARE APPROXIMATE AND ARE SUBJECT TO MINOR DEVIATIONS AS MAY OCCUR OR BE NECESSARY IN CONSTRUCTION. MINOR DETAILS NOT SHOWN.

- NOTES:**
1. ONAN 30KW SINGLE PHASE PTO DRIVEN GENERATOR WITH SPLASH GUARD LOCATED BETWEEN THE FRAME RAILS
  2. POLISHED S/S SCUFFPLATES ON CAB DOOR JAMBS
  3. POLISHED S/S SCUFFPLATES ON EXTERIOR WINDOW SILLS
  4. FLOOR IN CAB TO BE PADDED RUBBER
  5. KUSSMAUL PUMP PLUS 1200 BATTERY CHARGER LOCATED BEHIND DRIVER'S SEAT WITH COVER
  6. BRUSHED S/S SCUFFPLATES ON ALL BODY COMPARTMENT DOORS
  7. PIERCE DUAL LED LIGHT STRIPS IN BODY COMPARTMENTS
  8. RECEIVER STYLE REAR STEP
  9. RECEIVER STYLE REAR STEP
  10. (2) #9,000 RECEIVER STYLE TIE DOWNS
  11. (12) POLY TOOL BOXES SHIPPED LOOSE

**NOTE:**  
LAP DOORS HAVE BEEN SHOWN IN HIDDEN LINES TO CLEARLY IDENTIFY THE EQUIPMENT IN EACH COMPARTMENT. DASHED LINES ON SIDES ARE DOORS IN OPEN POSITION

CLEAR DOOR WIDTH KEY		REV	DATE	BY	CH	CHASSIS DATA
AMDR ROLL UP DOORS:	-1 7/8"	07JUN17	DHE	AZU		TITLE
CORTITE ROLL UP DOORS:	-2 3/4"	14APR17	DHE	AZU		HEAVY DUTY RESCUE WALKIN
PIERCE DOUBLE LAP DOORS:	-4 1/4"	12APR17	DHE	AZU		FOR
PIERCE LIFT-UP LAP DOORS:	-1 1/2"	05FEB17	DHE	AZU		HUNTINGTOWN VOLUNTEER FIRE DEPARTMENT HUNTINGTOWN
(EX: 60" F-F = 1 7/8" = 58 1/8" CLEAR) (F-F) = FRAME TO FRAME						CHECKED BY
						AZU
						DWG NO.
						30617AD-SH1

		JOB NO.	30617
		SCALE	DATE
MANUFACTURING INC.		DRAWN BY	DHE
RANDY SCHWARTZ		CHECKED BY	AZU
HUNTINGTOWN VOLUNTEER FIRE DEPARTMENT		DWG NO.	30617AD-SH1
HUNTINGTOWN		SHEET SIZE	D
RANDY SCHWARTZ		SHEET NO.	1 OF 2