

PASSENGER'S SIDE COMPARTMENTS CONTAIN THE FOLLOWING:

COMPARTMENT P1 CONTAINS:

- (1) TRAY, FLOOR MOUNTED, SLIDE-OUT, STD. DEPTH COMPT, 500LB, 2.00' SIDES
- (1) SHELF, ADJUSTABLE, 500 LB CAPACITY, STANDARD DEPTH

COMPARTMENT P2 CONTAINS:

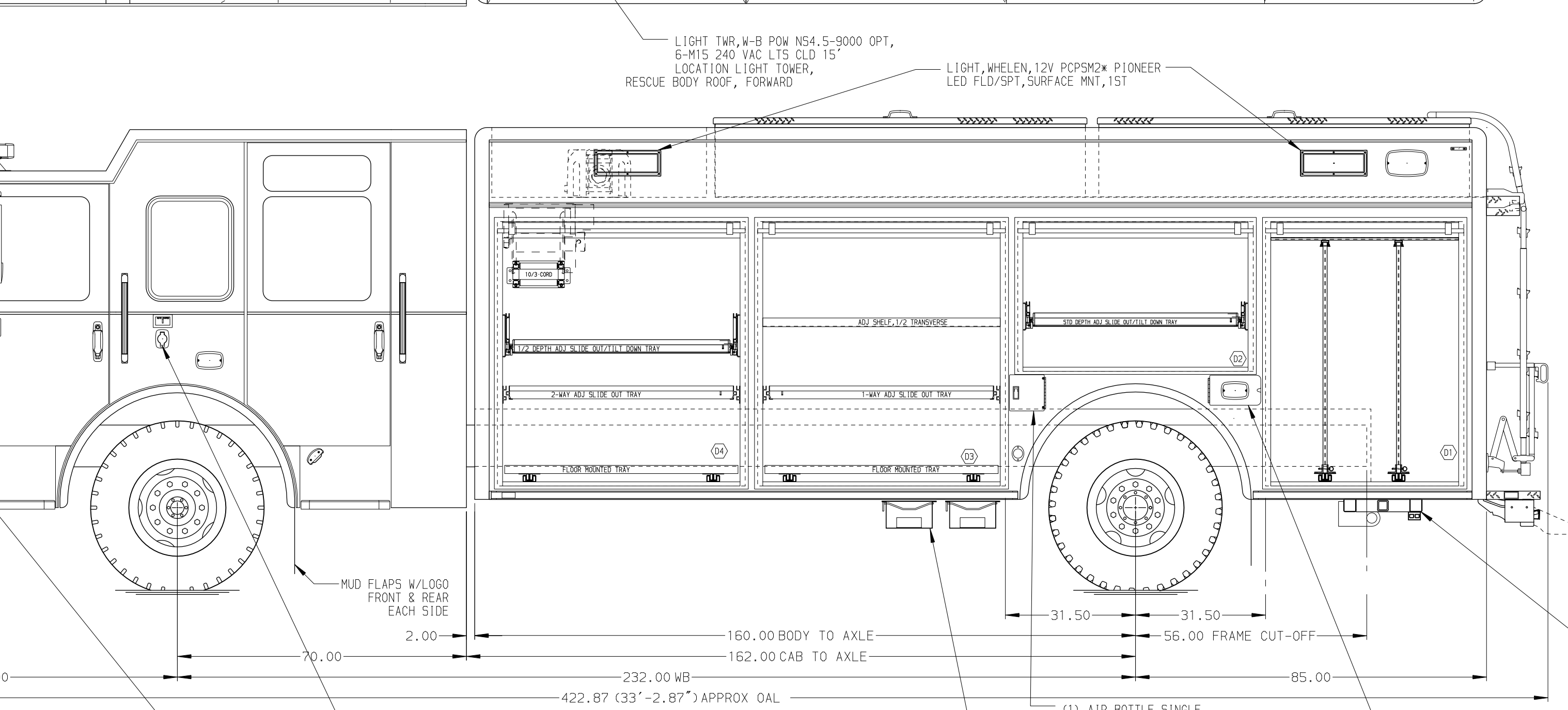
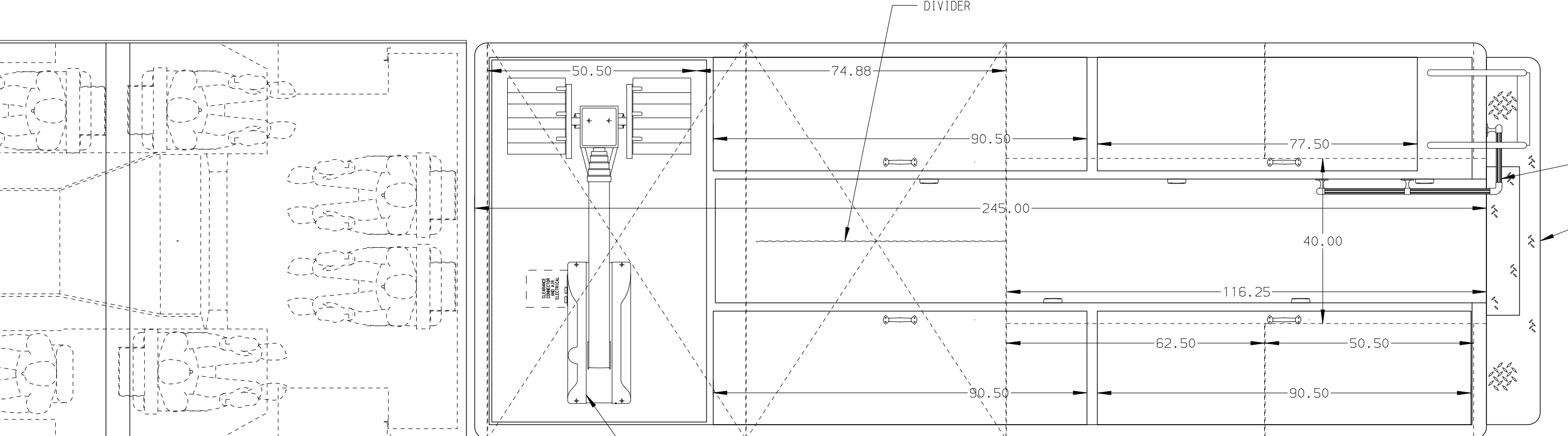
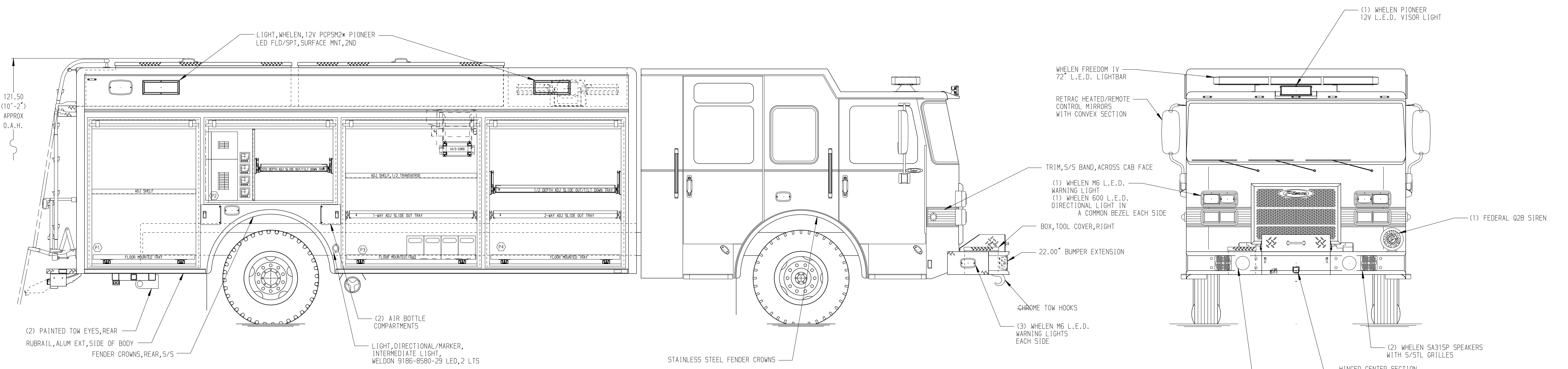
- (1) TRAY, 200 LB, TILT/SLIDE-OUT, 30 DEG, ADJUSTABLE, STD DEPTH COMPT
- (1) VERTICAL COMPARTMENT DIVIDER
- (2) CIRCUIT BREAKER PANELS

COMPARTMENT P3 CONTAINS:

- (1) TRAY, FLOOR MOUNTED, SLIDE-OUT, STD. DEPTH COMPT, 500LB, 2.00' SIDES
- (1) TRAY, 500 LB, SLIDE-OUT, 1-WAY, UTILITY, ADJUSTABLE HEIGHT, 1/2 TRANSVERSE
- (1) ELECTRIC CORD REEL WITH 200' OF 10/3 YELLOW CORD

COMPARTMENT P4 CONTAINS:

- (1) TRAY, FLOOR MOUNTED, SLIDE-OUT, STD. DEPTH COMPT, 500LB, 2.00' SIDES
- (1) TRAY, 200 LB, TILT/SLIDE-OUT, 30 DEG, ADJUSTABLE, 1/2 TRANSVERSE
- (1) TRAY, 500 LB, SLIDE-OUT, 2-WAY, UTILITY, ADJUSTABLE HEIGHT, FULL TRANSVERSE



DRIVER'S SIDE COMPARTMENTS CONTAIN THE FOLLOWING:

COMPARTMENT D1 CONTAINS:

- (2) TOOLBOARDS, SLIDE-OUT, ALUM, .188\", PEG BOARD, STD. DEPTH

COMPARTMENT D2 CONTAINS:

- (1) TRAY, 200 LB, TILT/SLIDE-OUT, 30 DEG,

COMPARTMENT D3 CONTAINS:

- (1) TRAY, FLOOR MOUNTED, SLIDE-OUT, STD. DEPTH COMPT, 500LB, 2.00' SIDES
- (1) TRAY, 500 LB, SLIDE-OUT, 1-WAY, UTILITY, ADJUSTABLE HEIGHT, 1/2 TRANSVERSE

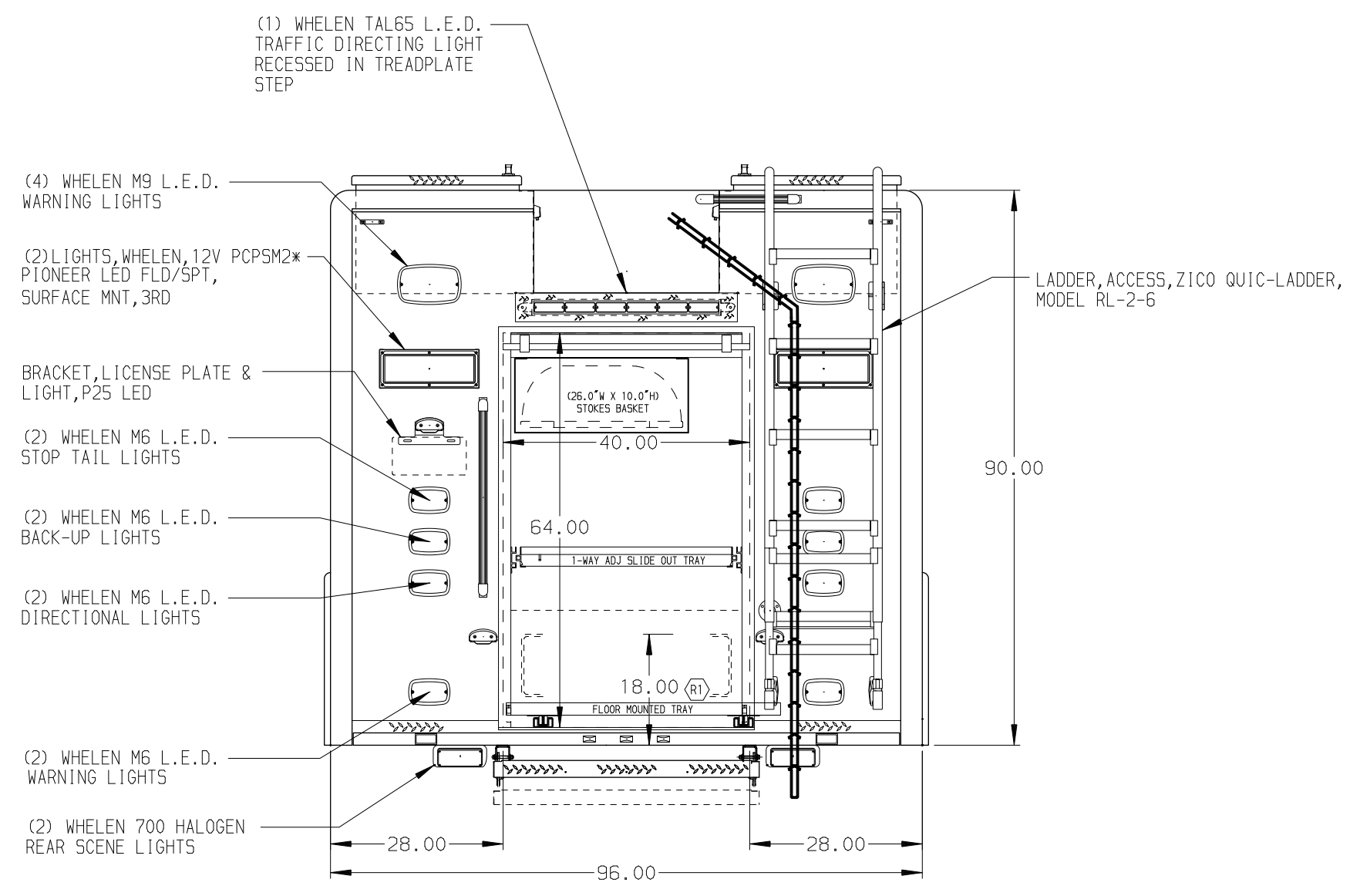
COMPARTMENT D4 CONTAINS:

- (1) TRAY, FLOOR MOUNTED, SLIDE-OUT, STD. DEPTH COMPT, 500LB, 2.00' SIDES
- (1) TRAY, 200 LB, TILT/SLIDE-OUT, 30 DEG, ADJUSTABLE, 1/2 TRANSVERSE
- (1) TRAY, 500 LB, SLIDE-OUT, 2-WAY, UTILITY, ADJUSTABLE HEIGHT, FULL TRANSVERSE
- (1) ELECTRIC CORD REEL WITH 200' OF 10/3 YELLOW CORD

REAR COMPARTMENT CONTAINS THE FOLLOWING:

COMPARTMENT R1 CONTAINS:

- (1) TRAY, FLOOR MOUNTED, SLIDE-OUT, STD. DEPTH COMPT, 500LB, 2.00' SIDES
- (1) TRAY, 500 LB, SLIDE-OUT, 1-WAY, UTILITY, ADJUSTABLE HEIGHT, 110\"/>



NOTE
DIMENSIONS SHOWN ARE APPROXIMATE AND ARE SUBJECT TO MINOR DEVIATIONS AS MAY OCCUR OR BE NECESSARY IN CONSTRUCTION. MINOR DETAILS NOT SHOWN.

REV	DATE	BY	CH
15MAY17	RWI	CAG	
30NOV16	RWI	JAF	

		JOB NO.	30657
		SCALE	DATE
CHASSIS DATA TITLE: HEAVY DUTY RESCUE, 20.50' BODY NON-WALK-IN MAKE: PIERCE MODEL: PIERCE STOCK	DRAWN BY	RWI	14SEP16
	CHECKED BY	JAF	08NOV16
DWG NO.	30657AD		SHEET NO.
			1 OF 1