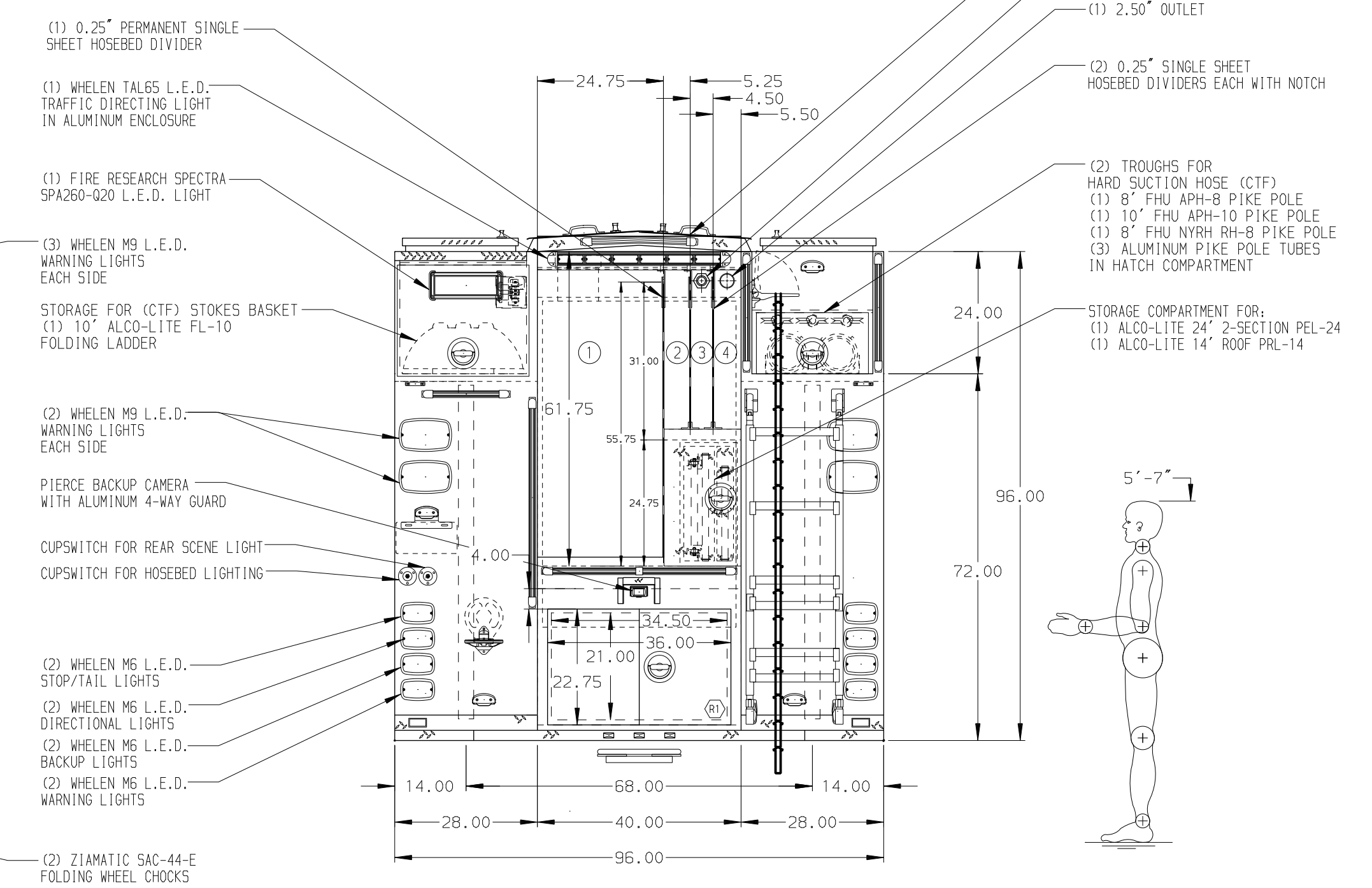
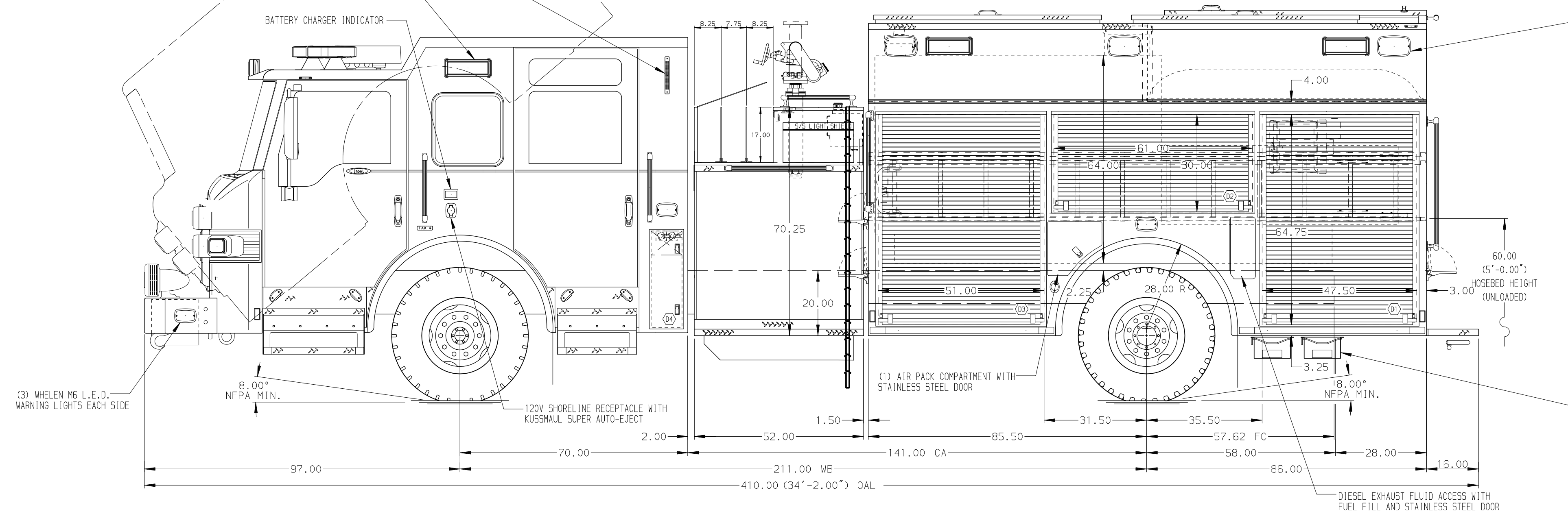


HOSEBED CAPACITIES

- 1000' OF 5.00" D.J. HOSE
- 235' OF 2.50" D.J. HOSE
- 265' OF 1.75" D.J. HOSE
- 295' OF 2.50" D.J. HOSE



ALUMINUM BODY

SIDE ROLL AND FRONTAL IMPACT PROTECTION

NOTE
DIMENSIONS SHOWN ARE APPROXIMATE AND ARE SUBJECT TO MINOR DEVIATIONS AS MAY OCCUR OR BE NECESSARY IN CONSTRUCTION. MINOR DETAILS NOT SHOWN.

- AIR INLET/OUTLET WITH DISCONNECT FITTING ON D.S. PUMP PANEL
- BATTERY CHARGER LOCATED BEHIND DRIVER'S SEAT
- DRIP PAN GUARD FOR ROLL-UP DOOR IN D2, D1, P1, P2, AND P3
- ONE FIXED FULL WIDTH/DEPTH SHELF IN D3
- ADJUSTABLE FULL WIDTH/DEPTH SHELVES TWO IN P1 AND D3 AND ONE IN D1
- ONE ADJUSTABLE SLIDE-OUT TRAY IN D1 AND D3
- ONE ADJUSTABLE TILTING SLIDE-OUT TRAY IN D2 AND P2
- SLIDE-OUT TOOL BOARD WITH PEGBOARD PATTERN IN D3 AND P1
- PARTITION BETWEEN COMPARTMENTS D1/R1 AND P1/R1
- ONE VERTICAL PARTITION IN P1
- ONE VERTICAL PARTITION (SPECIAL HEIGHT) IN D3
- ONE BOLT IN PARTITION BETWEEN THE HARD SUCTION HOSE AND CORD REEL IN THE PASSENGER'S SIDE HATCH COMPARTMENT
- CIRCUIT BREAKER PANEL IN D3
- ONE AKRON MODEL 15-10 ERWH ELECTRIC REWIND CORD REEL WITH 200' OF 10/3 CABLE IN HATCH COMPARTMENT ABOVE P3
- ONE SENTREX 6-PLACE RECEPTACLE STRIP IN THE REAR FACING CAB EMS COMPARTMENT
- (1) 120V DUPLEX RECEPTACLE IN P1

REV	DATE	BY	CH	IMPEL FR
05JUN17	LST	JBO		CHASSIS DATA
12MAY17	LST	JBO		MAKE
28FEB17	LST	CSH		PIERCE
				MODEL

		JOB NO.	30708
		SCALE	DATE
TITLE	2000-D-750P, 720G WATER W/30G FOAM, 171" RESCUE BODY (3) XLYAS, LADDERS IN HOSEBED, DELUGE, GENERATOR	DRAWN BY	LST
FOR	FLORENCE TOWNSHIP FIRE DISTRICT #1 FLORENCE, NEW JERSEY	CHECKED BY	CSH
DWG NO.	30708AD	SHEET SIZE	SHEET NO.
		D	1 OF 1