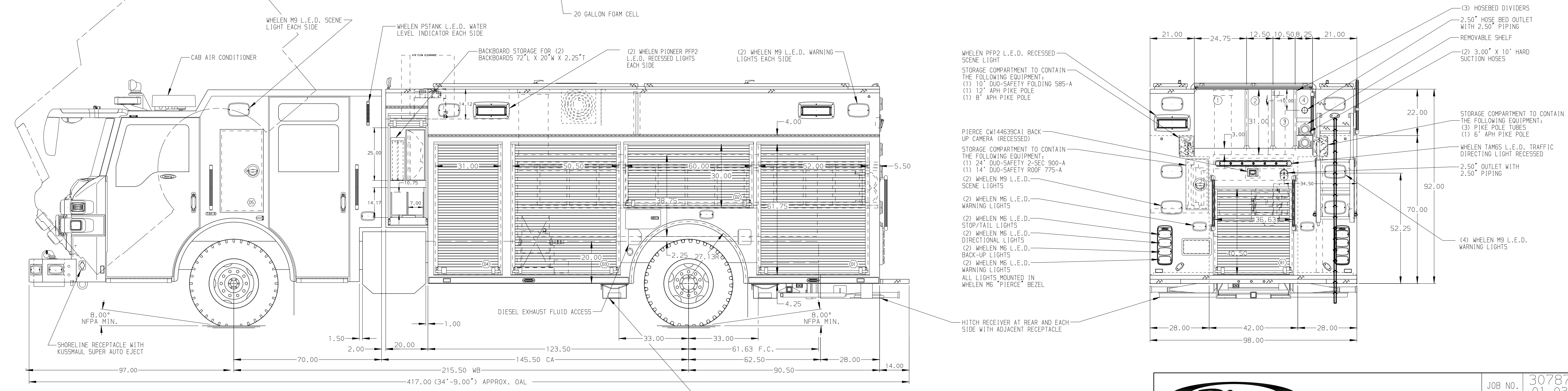


- HOSEBED CAPACITIES**
- ① 800' OF 5.00" D.J. HOSE
 - ② 550' OF 3.00" D.J. HOSE
 - ③ 400' OF 2.50" D.J. HOSE WITH (2) 1.75" HOSE PACKS
 - ④ 100' OF 1.75" D.J. HOSE



ALUMINUM BODY MAXIMUM O.A.L. 504.00" FRONTAL IMPACT PROTECTION

- NOTE**
DIMENSIONS SHOWN ARE APPROXIMATE AND ARE SUBJECT TO MINOR DEVIATIONS AS MAY OCCUR OR BE NECESSARY IN CONSTRUCTION. MINOR DETAILS NOT SHOWN.
1. AIR OUTLET WITH SHUT OFF VALVE LOCATED IN DRIVER SIDE STEP WELL
 2. ALUMINUM TREADPLATE ON CAB ROOF
 3. BATTERY CHARGER LOCATED IN DRIVER SIDE HATCH COMPARTMENT
 4. BATTERY CHARGER INDICATOR LOCATED ON DRIVER SEAT WITH BRACKET
 5. ONE FULL WIDTH/DEPTH ADJUSTABLE SHELF WITH 2" SIDES IN COMPARTMENT-D3; TWO IN D1
 6. ONE ADJUSTABLE SLIDE-OUT TRAY WITH 2" SIDES IN COMPARTMENT-P1
 7. ONE ADJUSTABLE TILT/SLIDE-OUT TRAY IN COMPARTMENT-P2; TWO IN P1, P3, P4
 8. ONE FLOOR MOUNTED SLIDE-OUT TRAY WITH 2" SIDES IN COMPARTMENT-P1, P3, P4, R1
 9. ONE VERTICAL PARTITION IN COMPARTMENT-P3
 10. ALUMINUM PEGBOARD ON BACK WALL IN COMPARTMENT D2
 11. MODEL 13 LITTLE GIANT LADDER IN COMPARTMENT-P3
 12. HANNAY EF20-25-26 ELECTRIC REWIND BOOSTER REEL WITH 130' OF 1.00" HOSE IN COMP.-D3
 13. HUSKY 12 FOAM SYSTEM LOCATED IN FRONT BODY AREA
 14. CIRCUIT BREAKER PANEL LOCATED IN COMPARTMENT-D3
 15. ONE HANNAY ECR1616-17-18 3-WIRE ELECTRIC REWIND CORD REEL WITH 200' OF 12/3 CABLE IN COMPARTMENT-R1

		JOB NO.	30787-01-03																				
		SCALE	1:24																				
Pierce MANUFACTURING INC.		TITLE	1500-D-750P, (2) 20 GAL. FOAM TANKS, DELUGE 214" PUC RESCUE BODY, LADDERS THRU BODY, (3) X-LAYS																				
		FOR	ST. GEORGE FIRE DEPARTMENT ST. GEORGE, UT																				
<table border="1"> <tr> <th>REV</th> <th>DATE</th> <th>BY</th> <th>CH</th> <th>VELOCITY FR</th> </tr> <tr> <td>05APR17</td> <td>BST</td> <td>JJR</td> <td></td> <td>MAKE</td> </tr> <tr> <td>09MAR17</td> <td>MMF</td> <td>JJR</td> <td></td> <td>PIERCE</td> </tr> <tr> <td>20JAN17</td> <td>BST</td> <td>SMA</td> <td></td> <td>MODEL</td> </tr> </table>		REV	DATE	BY	CH	VELOCITY FR	05APR17	BST	JJR		MAKE	09MAR17	MMF	JJR		PIERCE	20JAN17	BST	SMA		MODEL	DWG NO.	30787AD
		REV	DATE	BY	CH	VELOCITY FR																	
05APR17	BST	JJR		MAKE																			
09MAR17	MMF	JJR		PIERCE																			
20JAN17	BST	SMA		MODEL																			
		CHECKED BY	SMA																				
		SHEET SIZE	D																				
		DRAWN BY	BST																				
		SHEET NO.	1 OF 1																				
		CHECKED BY	SMA																				
		DATE	12JAN17																				
		CHECKED BY	SMA																				
		DATE	13JAN17																				