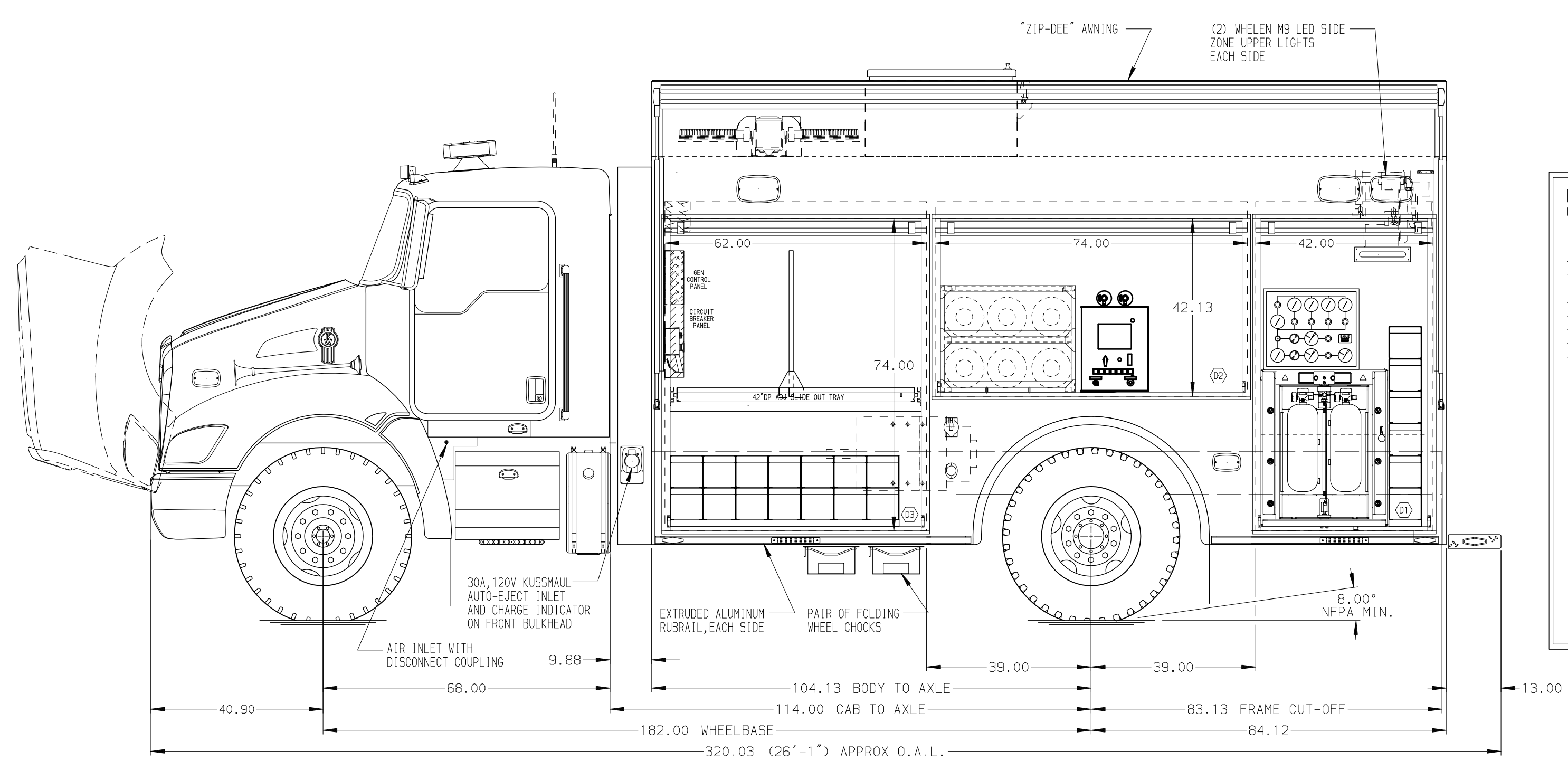
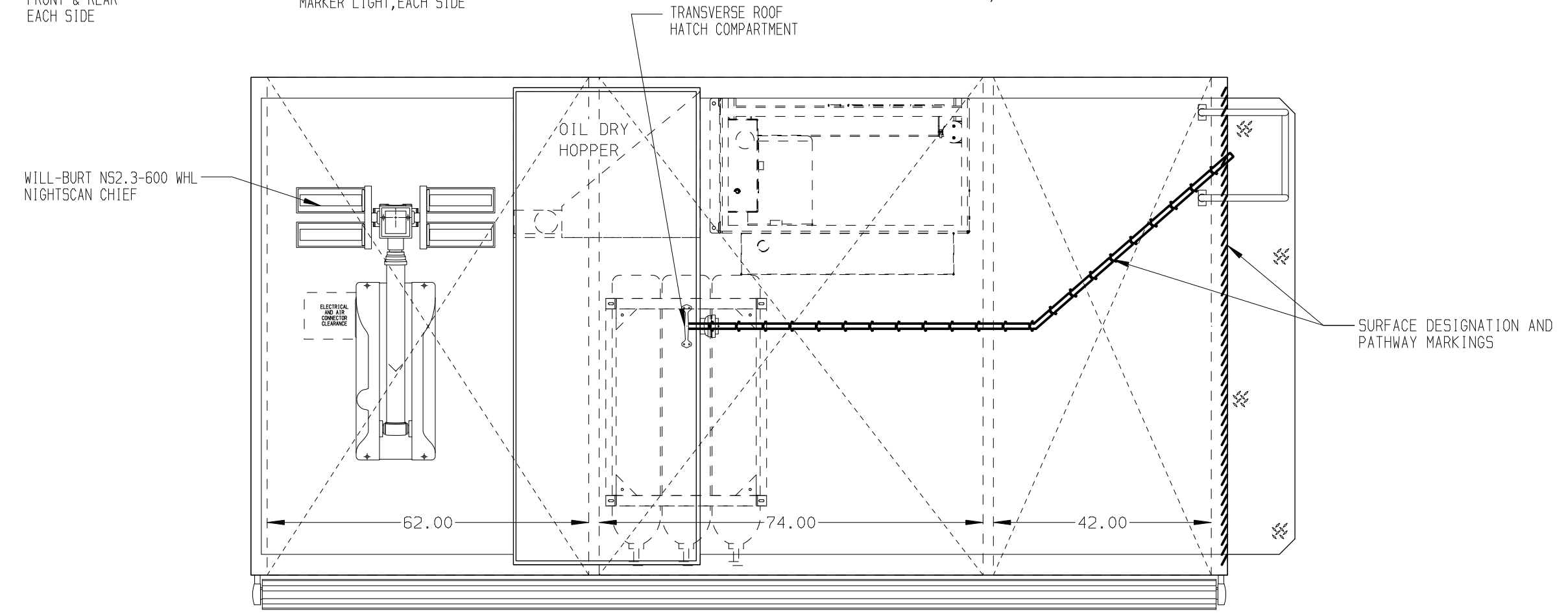
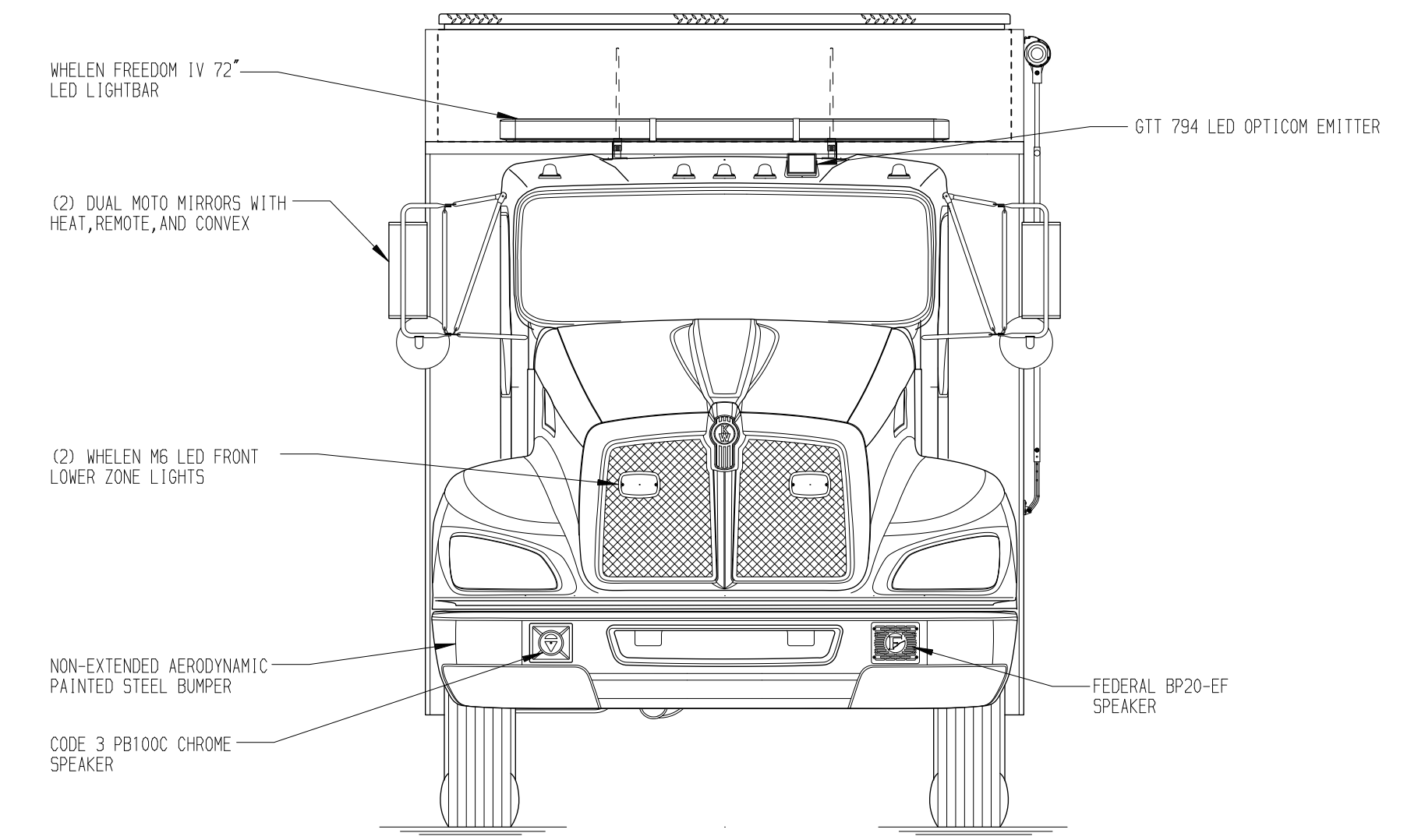
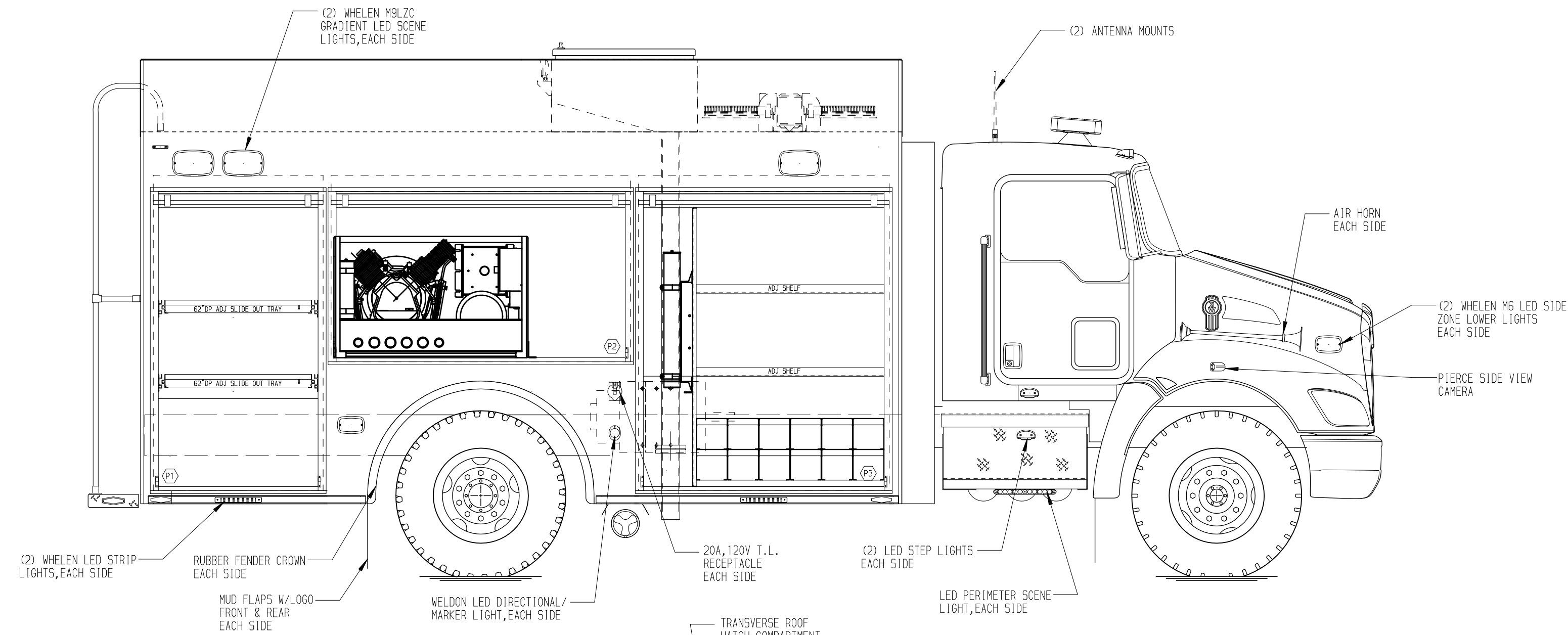


**PASSENGER'S SIDE COMPARTMENTS CONTAIN THE FOLLOWING:**

COMPARTMENT P1 CONTAINS:  
- (2) 62" DP ADJ SLIDE OUT TRAYS

COMPARTMENT P2 CONTAINS:  
- (1) EAGLE HAMWORTHY 24CFM BREATHING AIR COMPRESSOR

COMPARTMENT P3 CONTAINS:  
- (1) VERTICAL COMPARTMENT DIVIDER  
- (2) 42" DP ADJ SHELVES  
- (1) OIL DRY HOPPER  
- (1) RACK FOR 12 SCBA BOTTLES  
- BREATHING AIR PURIFIERS

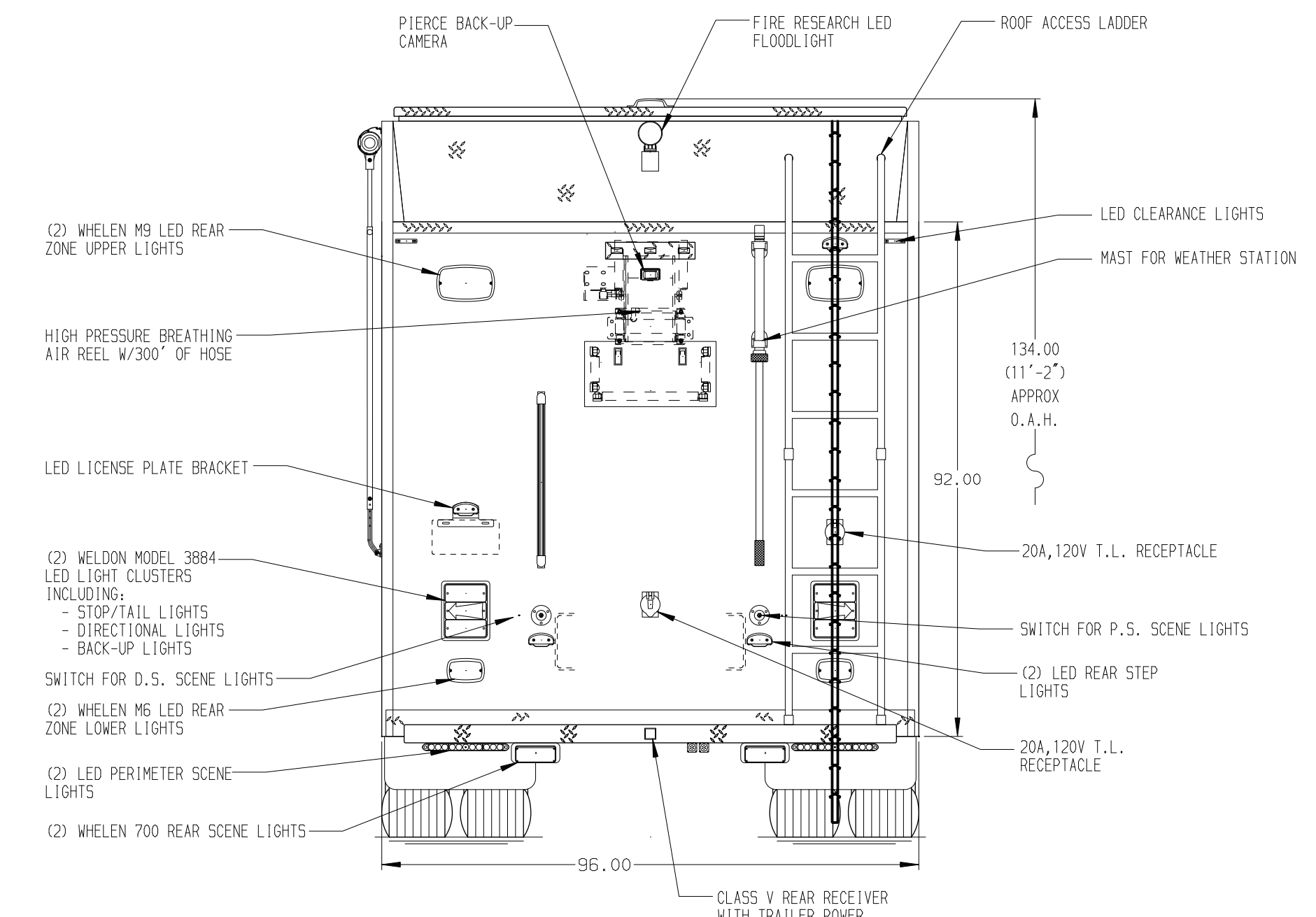


**DRIVER'S SIDE COMPARTMENTS CONTAIN THE FOLLOWING:**

COMPARTMENT D1 CONTAINS:  
 - (1) RACK FOR 6 SCBA BOTTLES  
 - (1) ELECTRIC CORD REEL WITH 100' OF 10/3 YELLOW CORD  
 - (1) CASCADE SYSTEM CONTROL PANEL  
 - (1) REVOLVE AIR 2-BOTTLE FILL ENCLOSURE

COMPARTMENT D2 CONTAINS:  
 - (6) UN AIR STORAGE BOTTLES  
 - (1) COMPRESSOR CONTROLLER

COMPARTMENT D3 CONTAINS:  
 - (1) KUSSMAUL 12 HD BATTERY CHARGER  
 - (1) 42" DP ADJ SLIDE OUT TRAY WITH TOOLBOARD AND RECEPTACLE STRIP  
 - (1) RACK FOR 14 SCBA BOTTLES  
 - (1) CIRCUIT BREAKER PANEL  
 - (1) GENERATOR METER PANEL  
 - (1) NIGHT SCAN CONTROLLER



**NOTE**  
 DIMENSIONS SHOWN ARE APPROXIMATE AND ARE SUBJECT TO MINOR DEVIATIONS AS MAY OCCUR OR BE NECESSARY IN CONSTRUCTION. MINOR DETAILS NOT SHOWN.

**NOTES:**  
 1. LIMA 40kW 3-PHASE PTO DRIVEN GENERATOR LOCATED BETWEEN THE FRAME RAILS  
 2. DAVID CLARK 2 POSITION INTERCOM SYSTEM  
 3. PIERCE DUAL LED LIGHT STRIPS IN ALL BODY AND HATCH COMPARTMENTS

| CLEAR DOOR WIDTH KEY   |         |         |      | CHASSIS DATA |          |         |                              |
|--|---------|---------|------|--------------|----------|---------|------------------------------|
| AMOR ROLL UP DOORS:  | -1 7/8" | 15MAY17 | DHE  | CDK          | MAKE     | TITLE   | ENCORE RESCUE VEHICLE        |
| CORTITE ROLL UP DOORS:   | -2 3/4" | 06APR07 | DHE  | CDK          | KENWORTH | FOR     | OSCEOLA COUNTY PUBLIC SAFETY |
| PIERCE DOUBLE LAP DOORS:   | -4 1/4" | 27JAN17 | DHE  | CDK          | MODEL    | DWG NO. | 30919AD                      |
| PIERCE LIFT-UP LAP DOORS:  | -1 1/2" | REV     | DATE | BY           | CH       | T370    |                              |
| (EX: 60" F-F - 1 7/8" = 58 1/8" CLEAR)<br>(F-F) = FRAME TO FRAME |         |         |      |              |          |         |                              |

**Pierce MANUFACTURING INC.**

JOB NO. 30919  
 SCALE 1:24  
 DATE  
 DRAWN BY DHE 16JAN17  
 CHECKED BY CDK 20JAN17  
 SHEET SIZE D SHEET NO. 1 OF 1

DUSTIN BOUWER