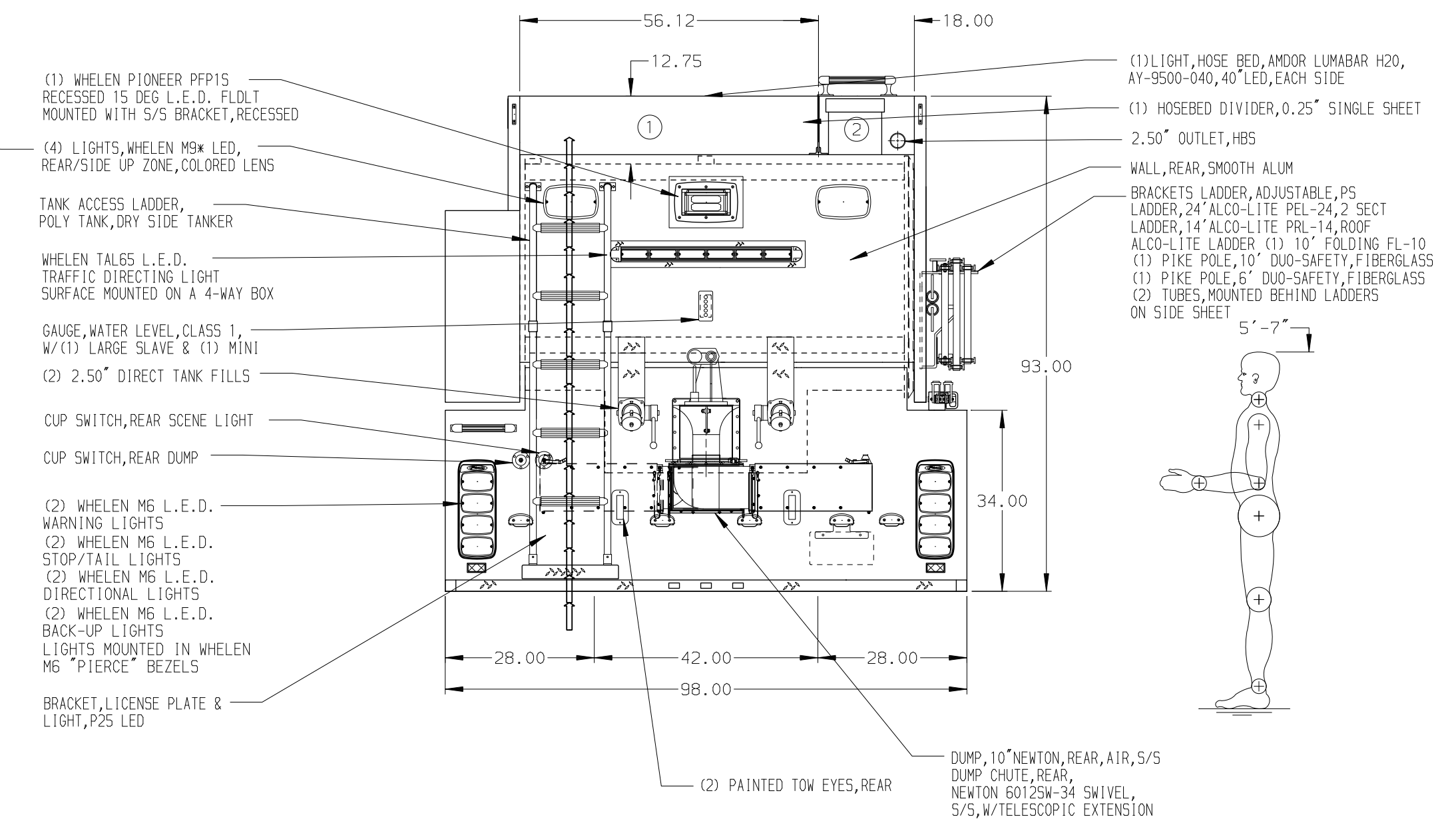
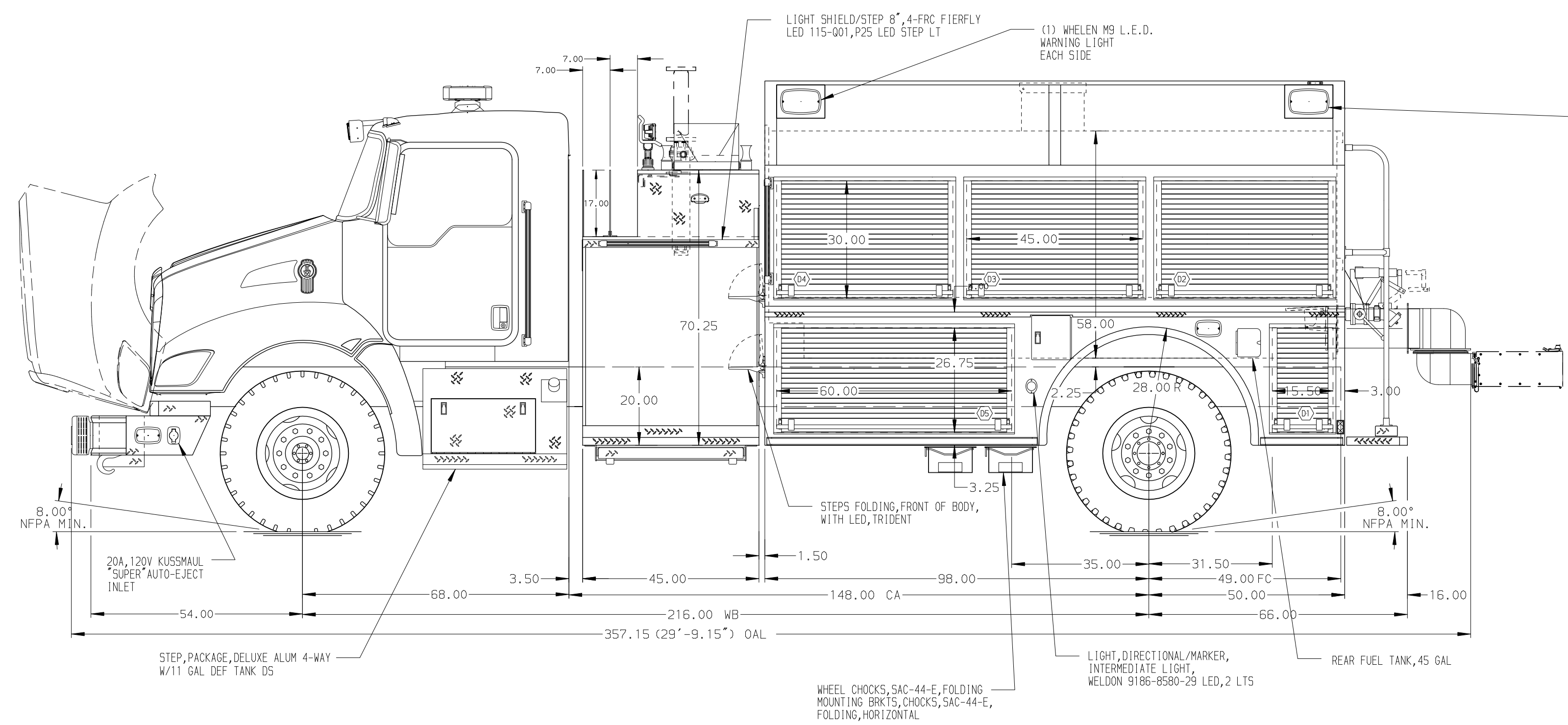


- HOSEBED CAPACITIES**
- ① 750' OF 5.00" L.D. HOSE
  - ② 200' OF 2.50" D.J. POLYESTER HOSE



**ALUMINUM BODY**

**NOTE**  
DIMENSIONS SHOWN ARE APPROXIMATE AND ARE SUBJECT TO MINOR DEVIATIONS AS MAY OCCUR OR BE NECESSARY IN CONSTRUCTION. MINOR DETAILS NOT SHOWN.

REV	DATE	BY	CH	T370
12JUL17	JLA	GSC		
31MAY17	JLA	GSC		
28FEB17	RWI	JAF		

<p>MANUFACTURING INC. BRADENTON, FLORIDA</p>		JOB NO.	30939
		SCALE	DATE
TITLE	1250-D-2000 POLY 148" HIGH-SIDE DRYSIDE BODY 45" SIDE CONTROL, (2) 1.5" CROSSSLAYS	DRAWN BY	JLA
FOR	CLARENDON COUNTY FIRE DEPT MANNING, SOUTH CAROLINA	CHECKED BY	RWI
DWG NO.	30939AD	SHEET SIZE	D
		SHEET NO.	1 OF 1