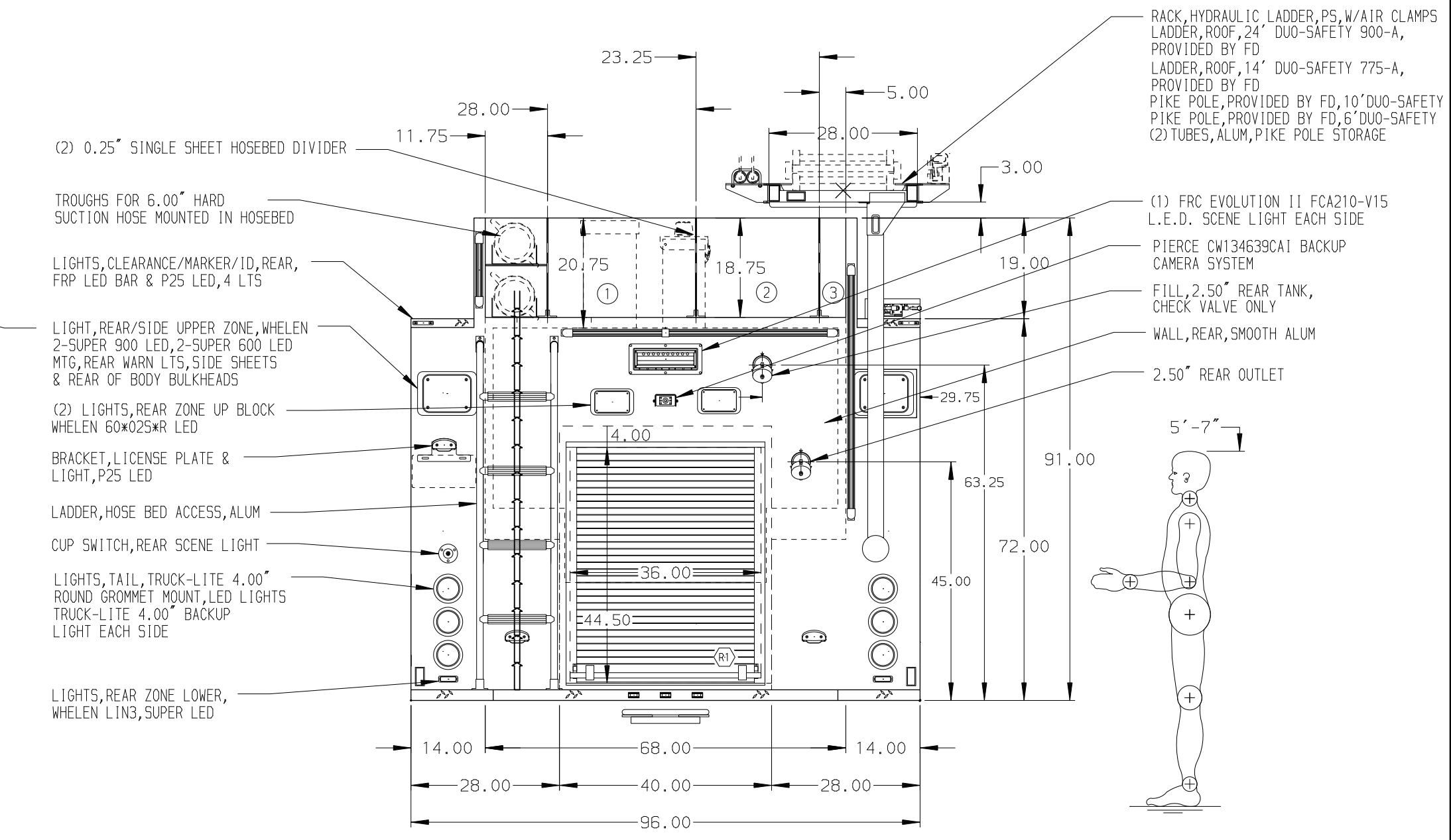
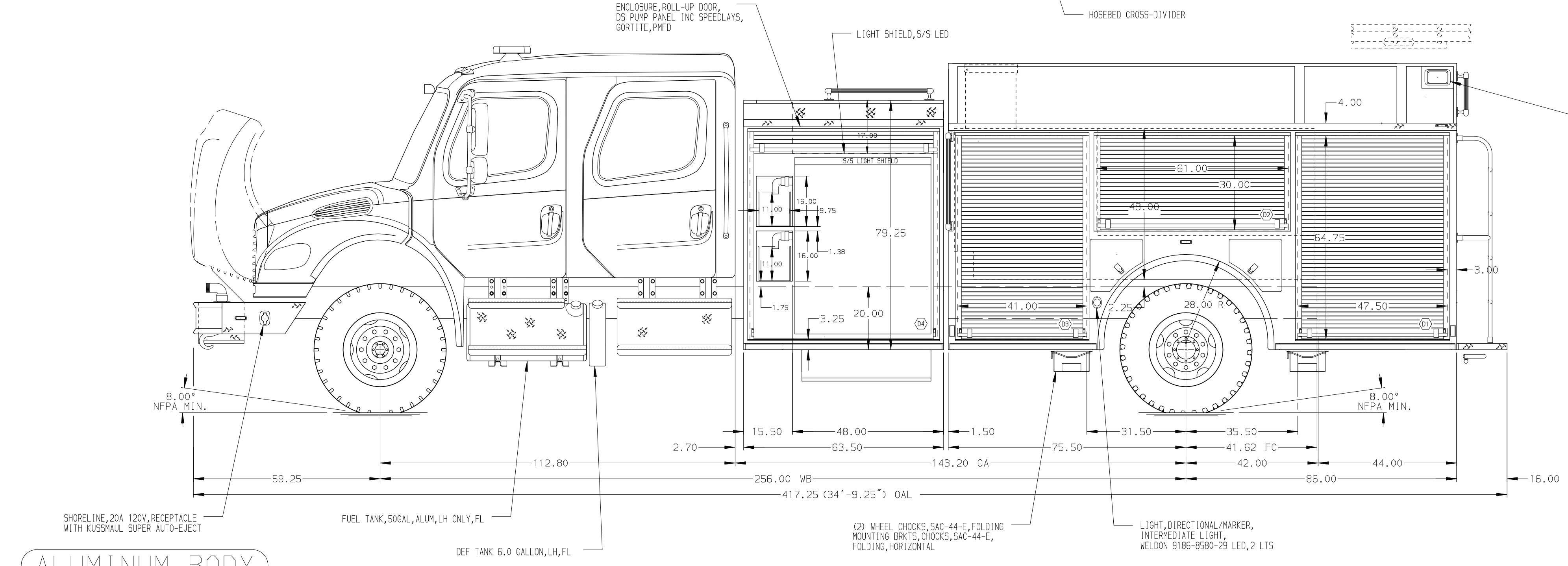


- HOSEBED CAPACITIES**
- ① 500' OF 5.00\"/>



ALUMINUM BODY

NOTE
DIMENSIONS SHOWN ARE APPROXIMATE AND ARE SUBJECT TO MINOR DEVIATIONS AS MAY OCCUR OR BE NECESSARY IN CONSTRUCTION. MINOR DETAILS NOT SHOWN.

| REV | DATE | BY | CH | CHASSIS DATA |
|---------|------|-----|----|--------------|
| 19JUN17 | RWI | GSC | | MAKE |
| 17MAY17 | JLA | GSC | | FL |
| 16FEB17 | RWI | JAF | | MODEL |
| | | | | M2-106 |

| | | | |
|---------|---|------------|--------|
| | | JOB NO. | 30977 |
| | | SCALE | 1:24 |
| TITLE | 1250-D-975P, W/25G FOAM, 161\"/> | | |
| FOR | FIFIELD FIRE DEPARTMENT FIFIELD, WISCONSIN | DRAWN BY | JLA |
| DWG NO. | 30977AD | CHECKED BY | RWI |
| | | SHEET SIZE | D |
| | | SHEET NO. | 1 OF 1 |