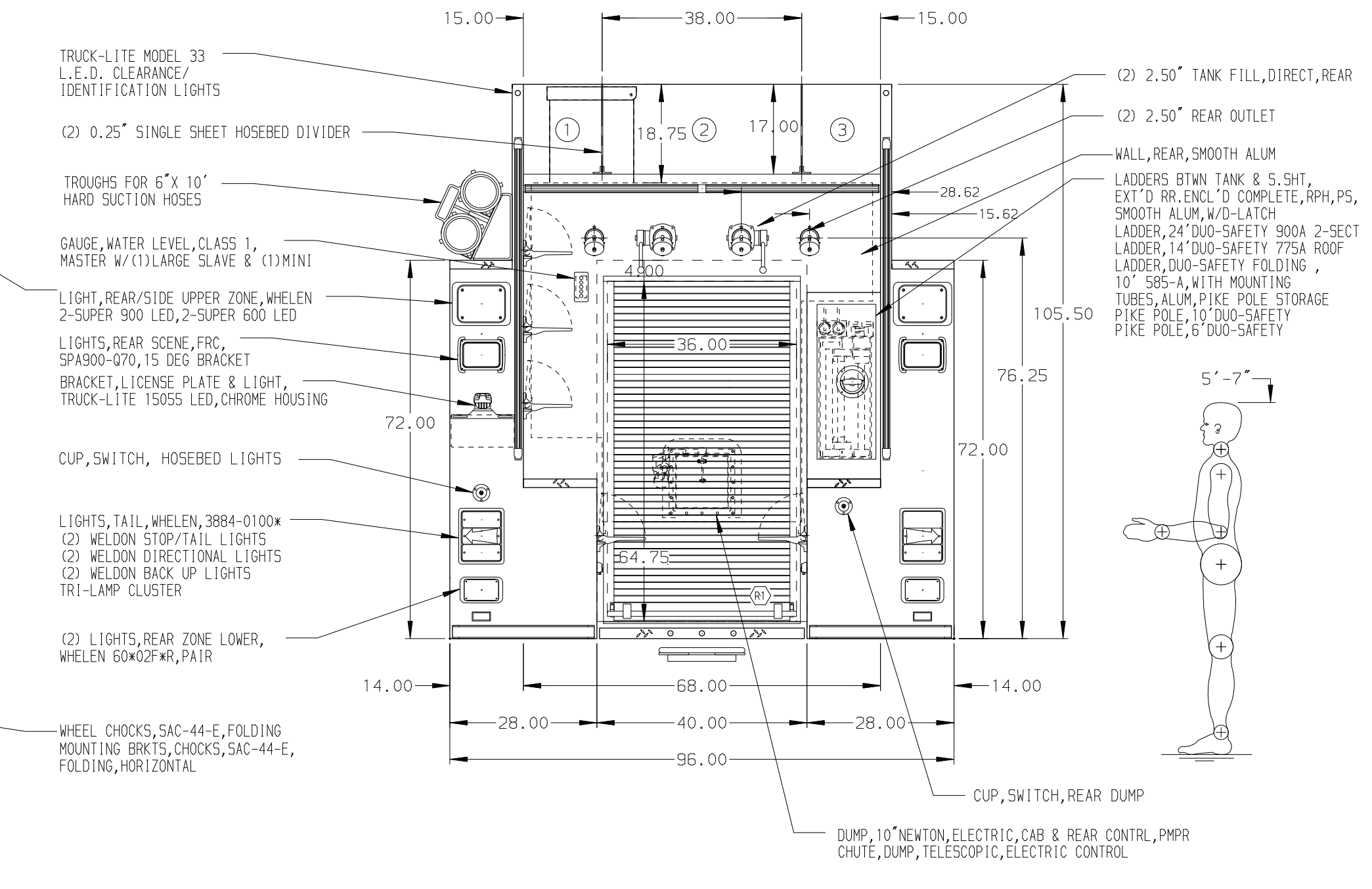


- HOSEBED CAPACITIES
- ① 500' OF 2.50" D.J. POLYESTER HOSE
 - ② 1000' OF 5.00" D.J. POLYESTER HOSE
 - ③ 500' OF 2.50" D.J. POLYESTER HOSE



ALUMINUM BODY

NOTE
DIMENSIONS SHOWN ARE APPROXIMATE AND ARE SUBJECT TO MINOR DEVIATIONS AS MAY OCCUR OR BE NECESSARY IN CONSTRUCTION. MINOR DETAILS NOT SHOWN.

| REV | DATE | BY | CH | CHASSIS DATA |
|---------|------|-----|----|--------------|
| 260CT17 | JAF | RWI | | MAKE |
| 19JUN17 | RWI | DDR | | KENWORTH |
| 20APR17 | JLA | DDR | | MODEL |
| 27FEB17 | RWI | JAF | | T370 |

Pierce MANUFACTURING INC.
BRADENTON, FLORIDA

JOB NO. 30978
SCALE 1:24
DATE

TITLE 1250-D-1500, 161" BODY, DS&PS FULL HEIGHT FDLER
S2" TOP MOUNT W/19" WALKWAY, (2) 1.5" SPEEDLAY
FOR ELLENBORO FD
ELLENBORO, NORTH CAROLINA

DRAWN BY JLA 10FEB17
CHECKED BY RWI 16FEB17
SHEET SIZE D SHEET NO. 1 OF 1

DWG NO. 30978AD