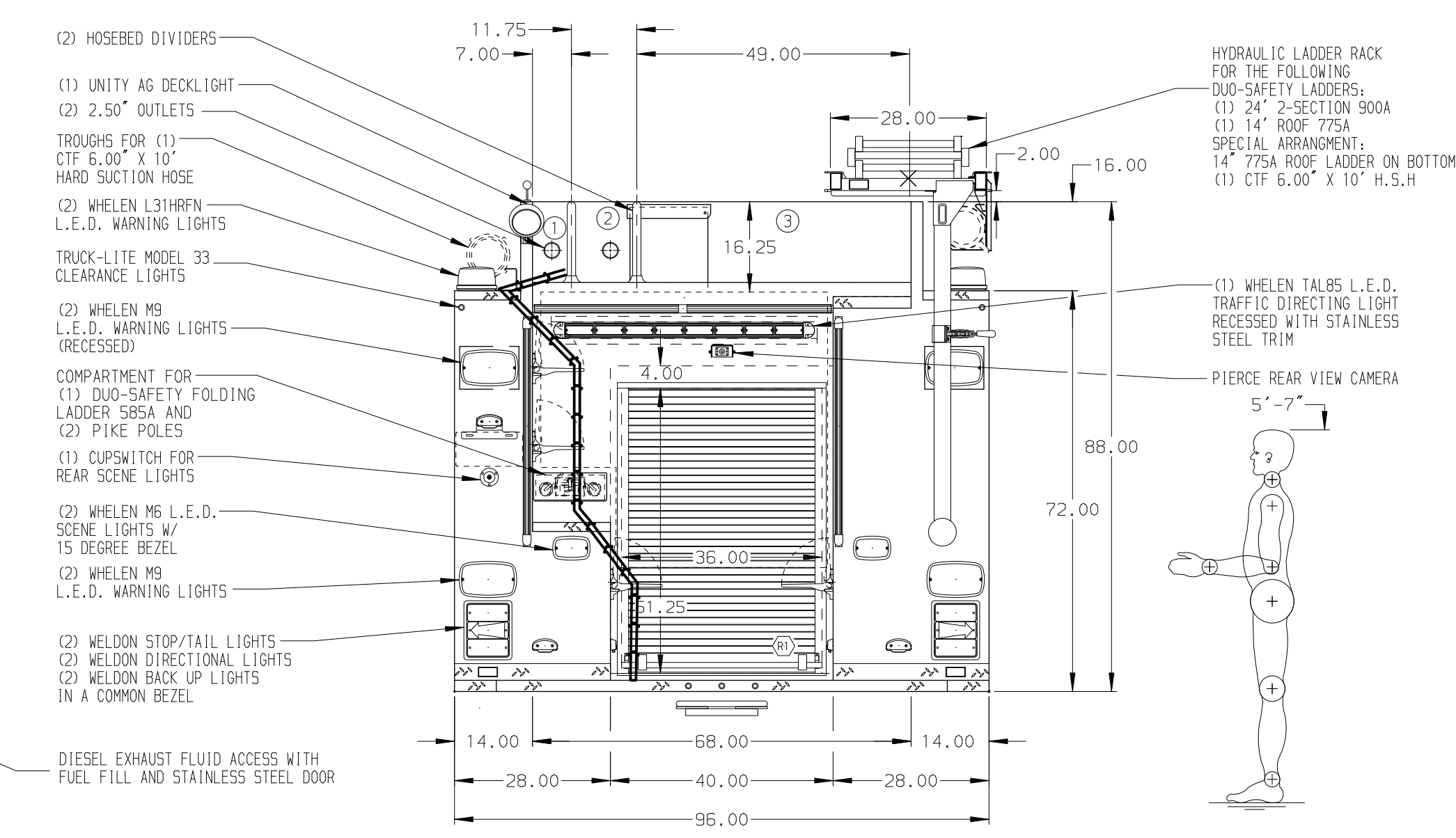
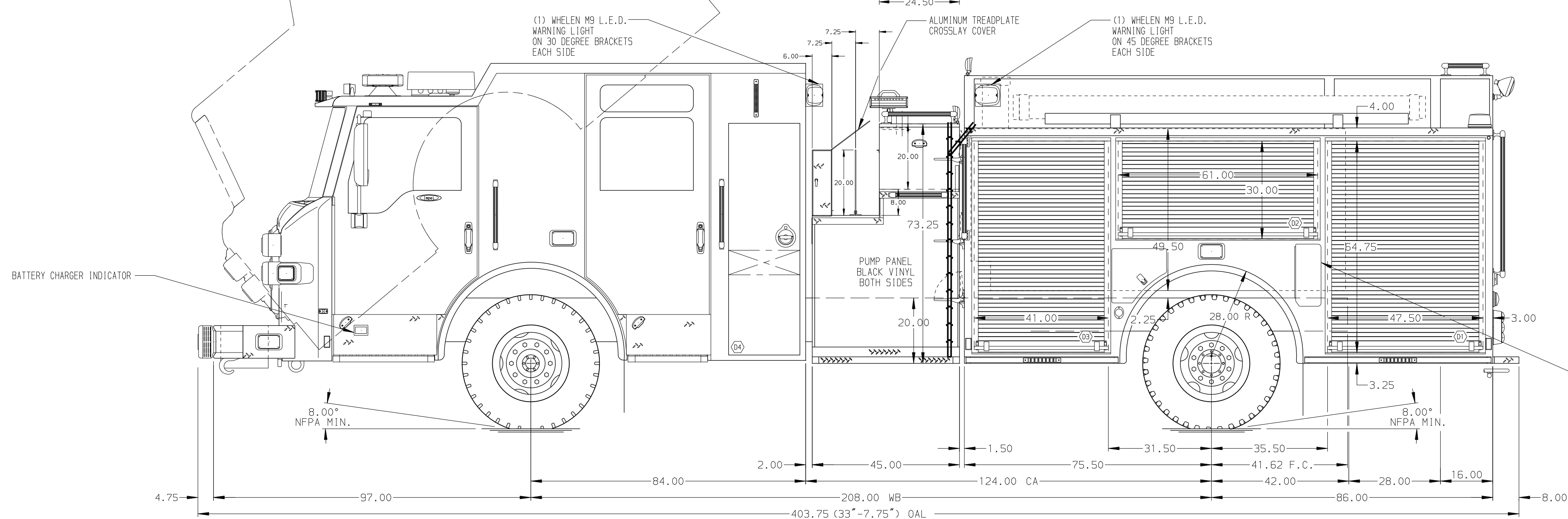


- HOSEBED CAPACITIES
- ① 200' OF 3.00" D.J. POLY HOSE
 - ② 200' OF 2.50" D.J. POLY HOSE
 - ③ 1000' OF 5.00" LDH HOSE



ALUMINUM BODY

NOTE
DIMENSIONS SHOWN ARE APPROXIMATE AND ARE SUBJECT TO MINOR DEVIATIONS AS MAY OCCUR OR BE NECESSARY IN CONSTRUCTION. MINOR DETAILS NOT SHOWN.

- CTF WHEEL CHOCKS AND MOUNTING BRACKETS
- BATTERY CHARGER LOCATED BEHIND DRIVER'S SEAT
- ONE FULL WIDTH/DEPTH PAINTED ADJUSTABLE SHELF IN COMPARTMENTS D3 & R1, AND TWO IN D1 & P3
- ONE FLOOR MOUNTED SLIDE-OUT W/O SIDES TRAY IN COMPARTMENTS D1, P1, & R1
- ONE VERTICAL PARTITION LOCATED IN COMPARTMENTS D3, P2, & P3
- ONE ADJUSTABLE TILTING SLIDE-OUT TRAY IN COMPARTMENTS P1 & P2
- SMOOTH ALUMINUM TOOL BOARD WITH TRACKS IN COMPARTMENT D2 & D3
- AIR INLET/OUTLET W/ DISCONNECT FITTING LOCATED ON D5 PUMP PANEL
- 120V SHORELINE RECEPTACLE W/ KUSSMALL SUPER AUTO EJECT LOCATED ON D5 PUMP PANEL
- TWO FIRE EXTINGUISHER STORAGE BINS LOCATED IN COMPARTMENT P3

11. ONE SLIDE OUT TOOLBOARD LOCATED IN COMPARTMENT D3

REV	DATE	BY	CH	IMPEL
09MAY17	JWO	SHA	MAKE	
05APR17	JWO	PJP	PIERCE	
28FEB17	JWO	JBL	MODEL	

		JOB NO.	30982
		SCALE	DATE
TITLE	1250-D-1000 GAL POLY, 161" D5 FDLR PS FHFH (2) XLAYS, DELUGE, HYDRAULIC LADDER RACK		
FOR	OSCEOLA COUNTY PUBLIC SAFETY KISSIMMEE, FLORIDA		
DWG NO.	30982AD		
DRAWN BY	JWO	CHECKED BY	JBL
DATE	16FEB17	DATE	17FEB17
SHEET SIZE	D	SHEET NO.	1 OF 1