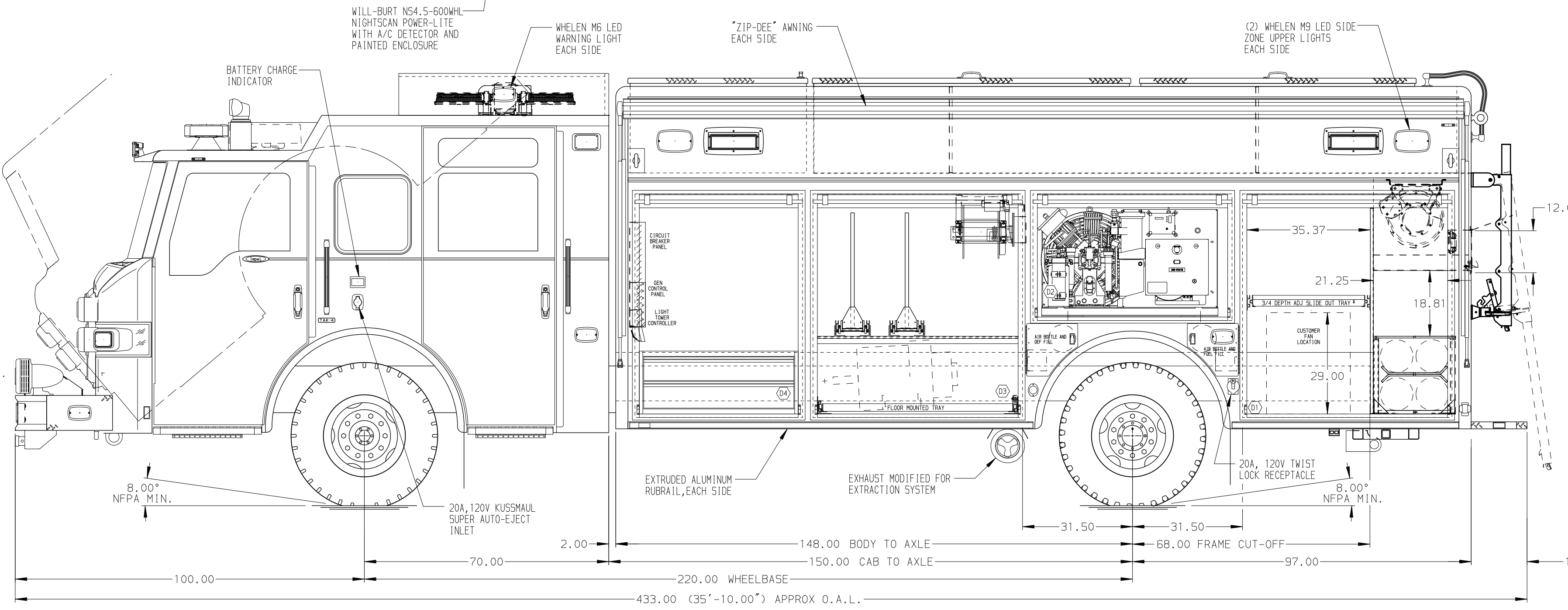
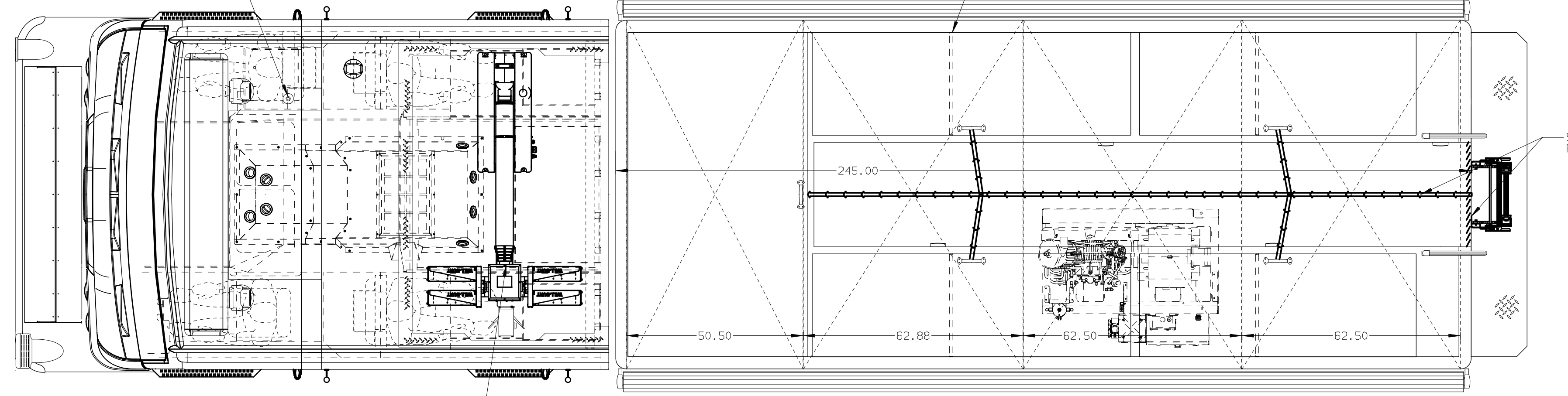
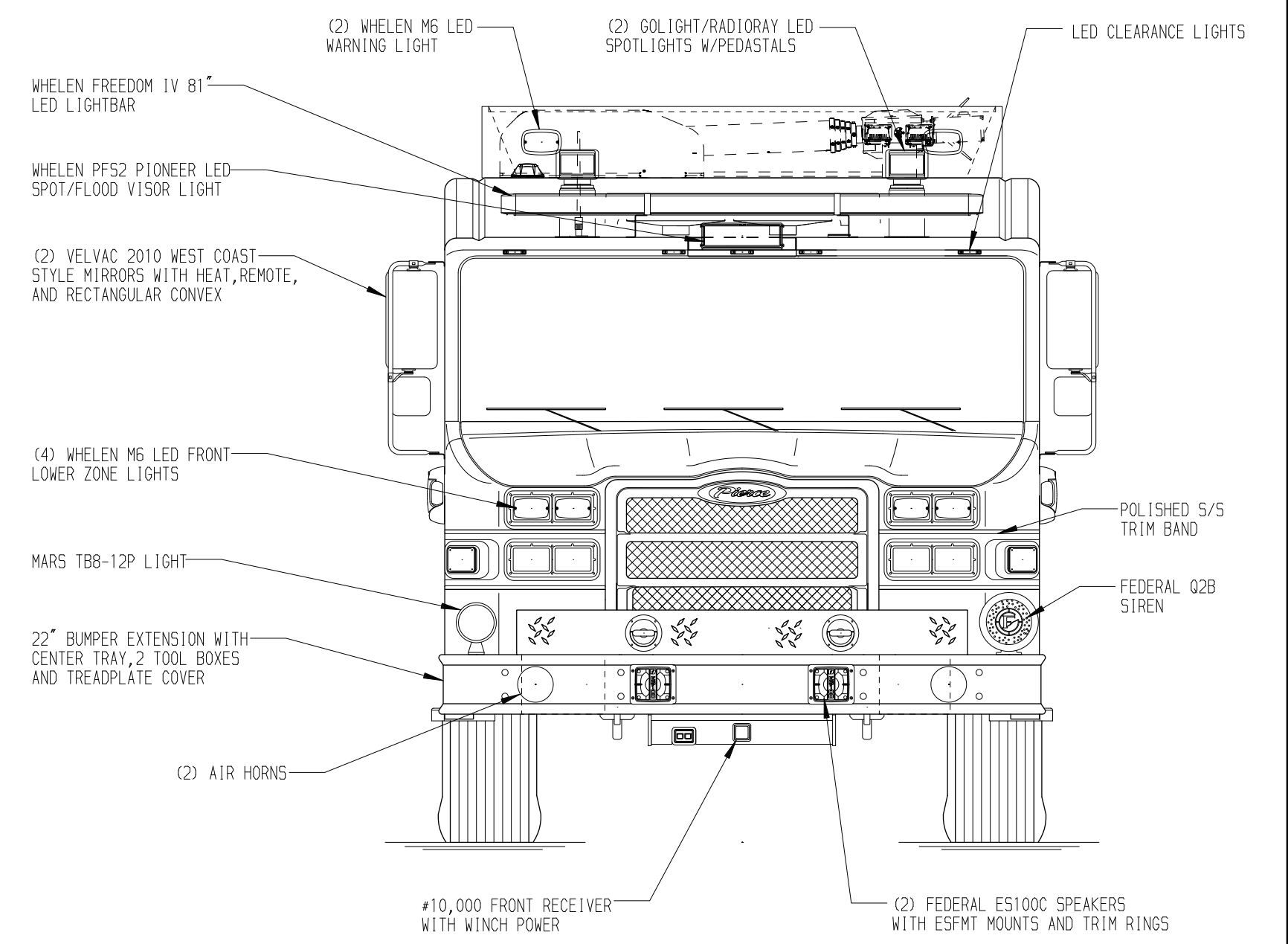
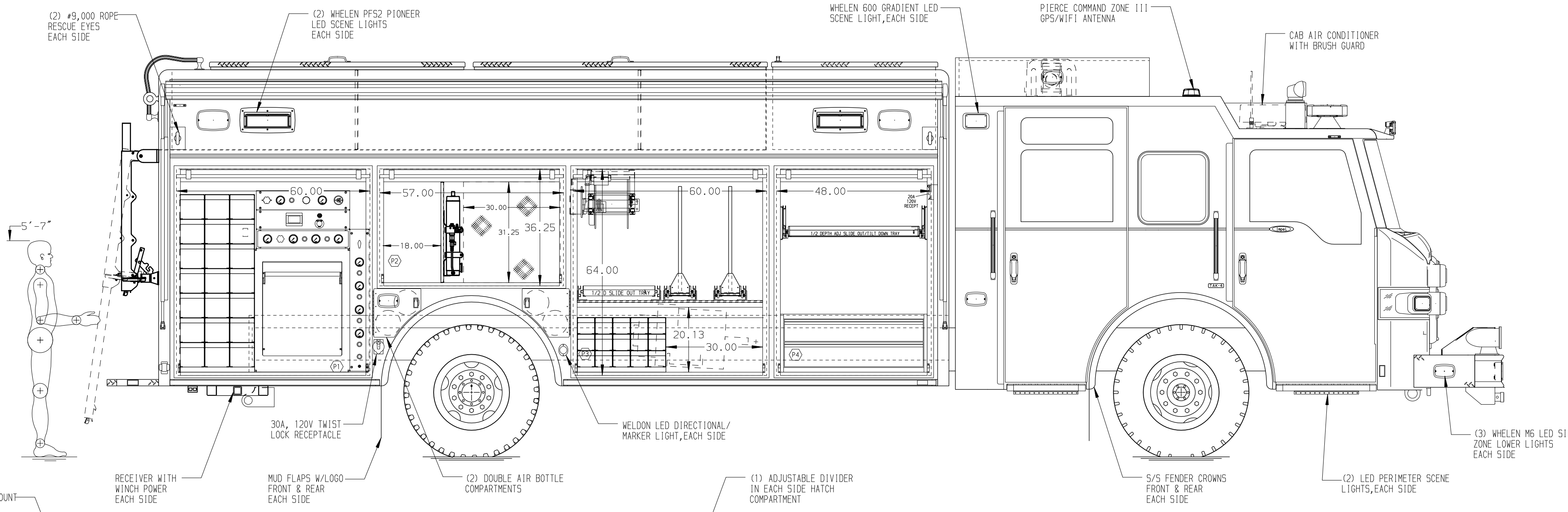
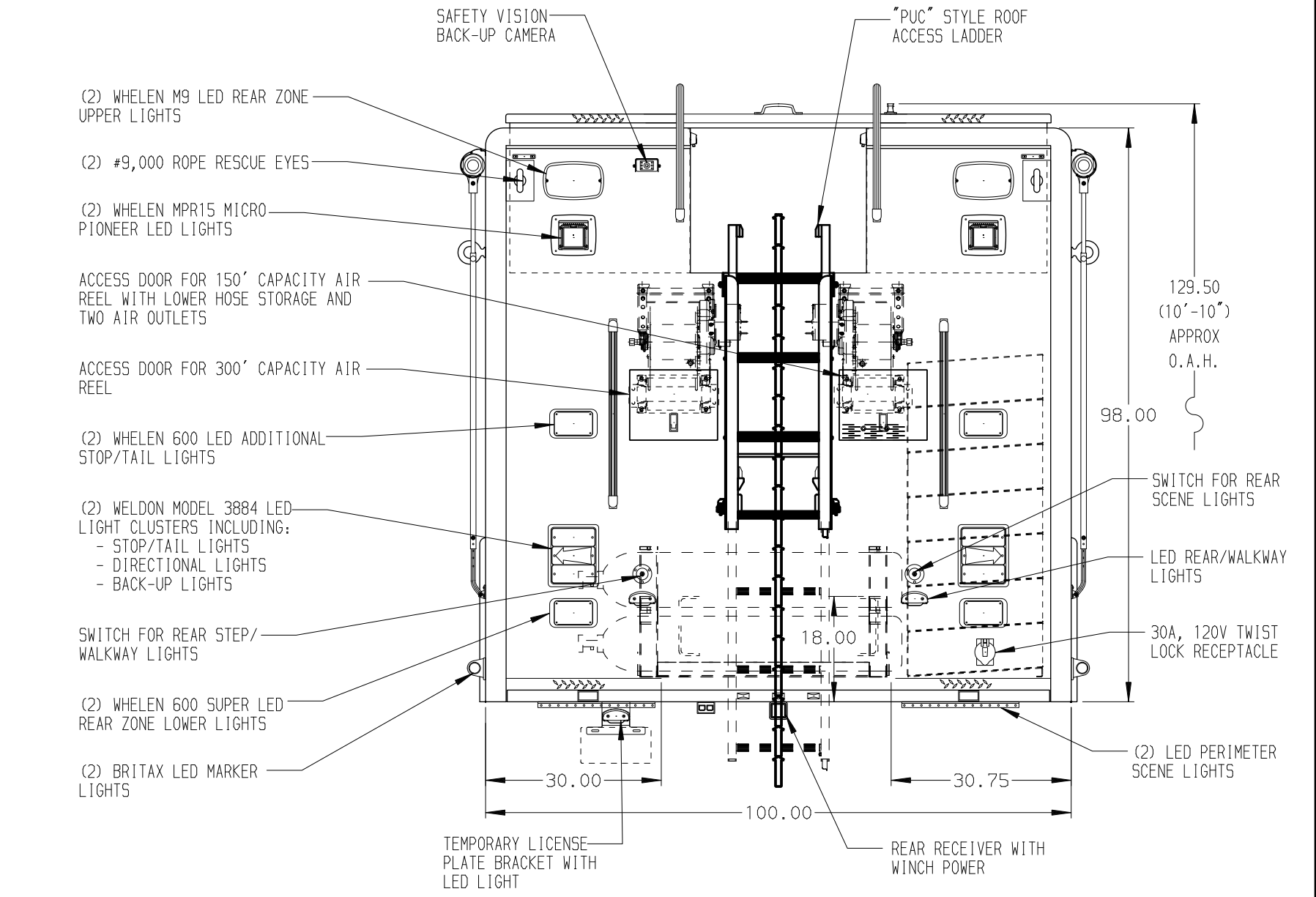


- PASSENGER'S SIDE COMPARTMENTS CONTAIN THE FOLLOWING:**
- COMPARTMENT P1 CONTAINS:**
- (1) RACK FOR 21 SCBA BOTTLES
 - (1) CASCADE SYSTEM CONTROL PANEL
 - (1) BAUER CF55.5-25 FILL ENCLOSURE
- COMPARTMENT P2 CONTAINS:**
- (1) VERTICAL COMPARTMENT DIVIDER
 - BREATHING AIR PURIFIERS
 - EXPANDED METAL GUARD
- COMPARTMENT P3 CONTAINS:**
- (1) RACK FOR 15 SCBA BOTTLES (5 X 5 OPENING)
 - (1) 2-WAY ADJ SLIDE OUT TOOLBOARDS
 - (1) ELECTRIC CORD REEL WITH 200' OF 10/3 YELLOW CORD
 - (1) HORIZONTAL FLOOR EXTENSION
 - (1) 1/2 DEPTH FLOOR MTD SLIDE OUT TRAY
- COMPARTMENT P4 CONTAINS:**
- (1) 20A, 120V 4-PLACE RECEPTACLE
 - (1) 1/2 DEPTH ADJ SLIDE OUT/TILT TRAY
 - (1) 2-DRAWER C-TECH CABINET



- DRIVER'S SIDE COMPARTMENTS CONTAIN THE FOLLOWING:**
- COMPARTMENT D1 CONTAINS:**
- (4) 6000* UN BREATHING AIR CYLINDERS WITH STORAGE RACK
 - (1) VERTICAL COMPARTMENT DIVIDER
 - (1) HIGH PRESSURE REEL WITH 150' OF HOSE
 - (1) HIGH PRESSURE REEL WITH 300' OF HOSE
 - (1) HOSE STORAGE AREA BELOW THE 150' REEL WITH TWO AIR OUTLETS
- COMPARTMENT D2 CONTAINS:**
- (1) BAUER BP18H-E3 BREATHING AIR COMPRESSOR
- COMPARTMENT D3 CONTAINS:**
- (1) HORIZONTAL FLOOR EXTENSION
 - (1) STD DEPTH FLOOR MOUNTED TRAY WITH SIDE SLIDES
 - (2) 2-WAY ADJ SLIDE OUT TOOLBOARDS
 - (1) ELECTRIC CORD REEL WITH 200' OF 10/3 YELLOW CABLE
- COMPARTMENT D4 CONTAINS:**
- (1) 2-DRAWER C-TECH CABINET
 - (1) CIRCUIT BREAKER PANEL
 - (1) GENERATOR METER PANEL
 - (1) NIGHT SCAN CONTROLLER
 - (1) 20A, 120V 4-PLACE RECEPTACLE



NOTE
DIMENSIONS SHOWN ARE APPROXIMATE AND ARE SUBJECT TO MINOR DEVIATIONS AS MAY OCCUR OR BE NECESSARY IN CONSTRUCTION. MINOR DETAILS NOT SHOWN.

- NOTES:**
- LIMA 40kw THREE PHASE GENERATOR LOCATED BETWEEN THE FRAME RAILS
 - ONSPOT AUTOMATIC TIRE CHAINS
 - AIR INLET WITH DISCONNECT COUPLING LOCATED IN THE DRIVER'S SIDE LOWER CAB STEP WELL
 - POLISHED S/S SCUFFPLATES ON CAB AND CREW CAB DOOR JAMBS
 - FLOOR IN CAB AND CREW CAB TO BE PADDED RUBBER
 - KUSSMAUL PUMP PLUS 1000 CHARGER LOCATED BEHIND THE DRIVER'S SEAT
 - PIERCE LED STRIP LIGHTS IN ALL BODY AND HATCH COMPARTMENTS
 - (1) 20A, 120V 6-PLACE RECEPTACLE STRIP IN EACH HATCH COMPARTMENT
 - (1) PAIR OF 540-44-C FOLDING WHEEL CHOCKS SHIPPED LOOSE
 - (2) 20A, 120V 4-PLACE RECEPTACLES, (1) BEHIND DRIVER'S SEAT AND (1) BEHIND OFFICER'S SEAT

SIDE ROLL AND FRONTAL IMPACT PROTECTION

CLEAR DOOR WIDTH KEY		CHASSIS DATA
AMDR ROLL UP DOORS:	-2 1/4"	TITLE
CORTITE ROLL UP DOORS:	-2 1/2"	HEAVY DUTY RESCUE NON-WALKIN
PIERCE DOUBLE LAP DOORS:	-4 1/4"	FOR
PIERCE LIFT-UP LAP DOORS:	-1 1/2"	KANSAS CITY FIRE DEPARTMENT-WYANDOTTE COUNTY KANSAS CITY, KS
(EX: 60" F-F - 2 1/4" = 57 3/4" CLEAR)		MAKE
(F-F) = FRAME TO FRAME		PIERCE
		MODEL
		IMFR7010
REV	DATE	BY
	09JUN17	ALZ AZU
	01MAY17	DHE CDK
		CH

		JOB NO.	31103
		SCALE	DATE
TITLE HEAVY DUTY RESCUE NON-WALKIN		DRAWN BY	DHE 17APR17
FOR KANSAS CITY FIRE DEPARTMENT-WYANDOTTE COUNTY KANSAS CITY, KS		CHECKED BY	CDK 19APR17
DWG NO. 31103AD		SHEET SIZE	SHEET NO.
		D	1 OF 1