

PUMPER BODY

Long Aluminum 2nd Gen Pumper

CHASSIS

Sober FR Chassis

CHASSIS AXLE, FRONT, CUSTOM
20,000 Lb Dana Axle

AXLE, REAR
27,000 Lb Dana Axle

ENGINE
400 HP Cummins L9 Engine

TRANSMISSION
Allison 5th Gen, 3000 EVS P

BUMPER
26" Extended Stainless Steel

CAB
7010 Sober FR Cab

BODY WATER TANK
1000 Gallon Poly Water Tank

COMPT, PUMPER, REAR
51.25" FF RollUp Rear Compt

COMPT, PUMPER, DRIVER SIDE
161" RollUp Full Height Front & Rear FDLR

COMPT, PUMPER PASS. SIDE
161" RollUp Full Height Front & Rear FDLR

FIRE SUPPRESSION PUMPHOUSE

45" Control Zone Top Mount

PUMP

1500 GPM Waterous CS

CROSSLAYS, 1.50"
1.50" Crosslays Not Required

CROSSLAYS, 2.50"
2.50" Crosslays Not Required

SPEEDLAYS

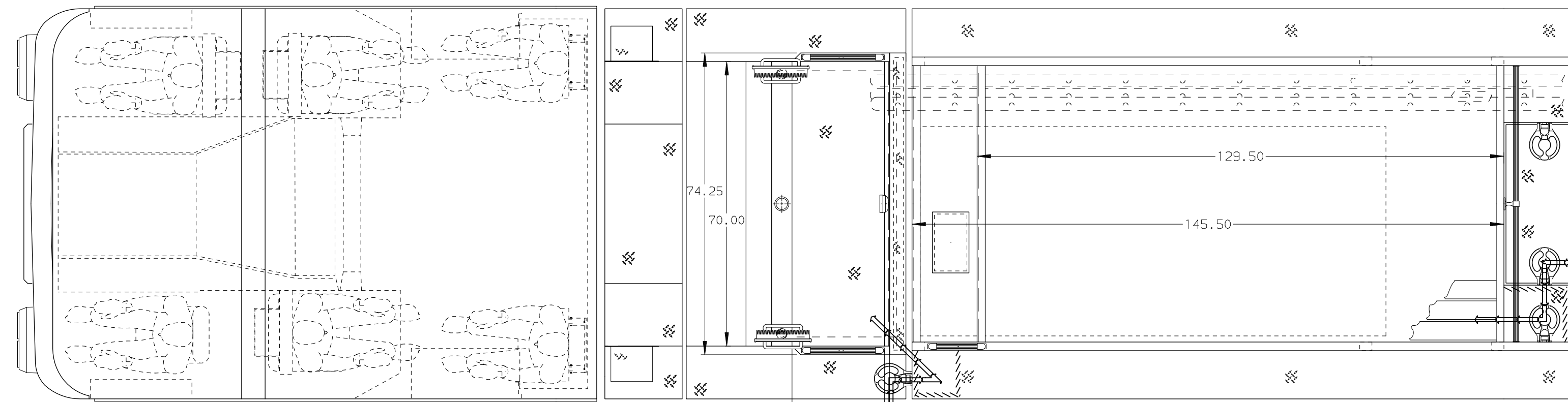
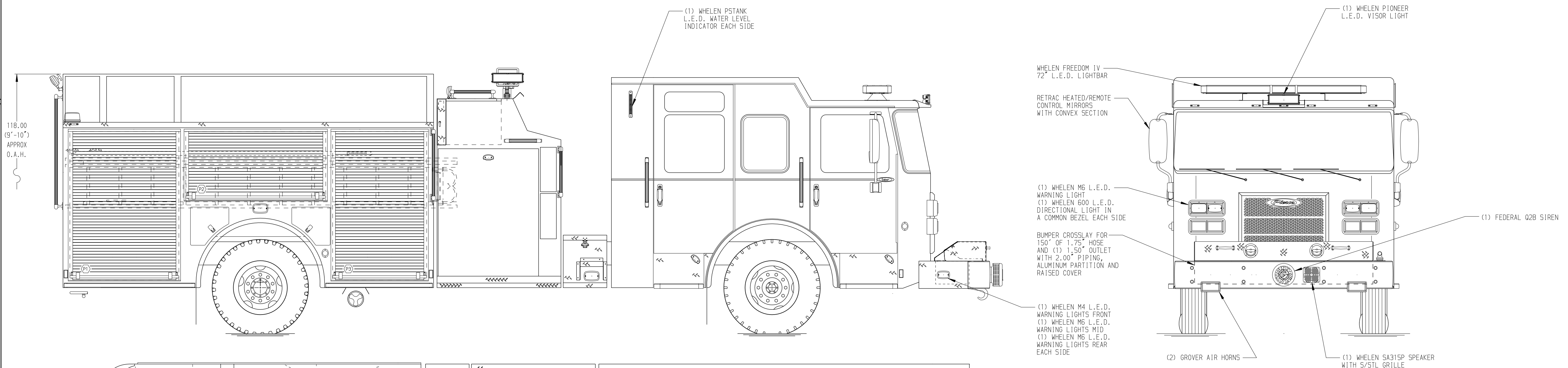
(2) 1.50" Standard Capacity

GENERATOR

Generator Not Required

Foam System
Foam System Not Required

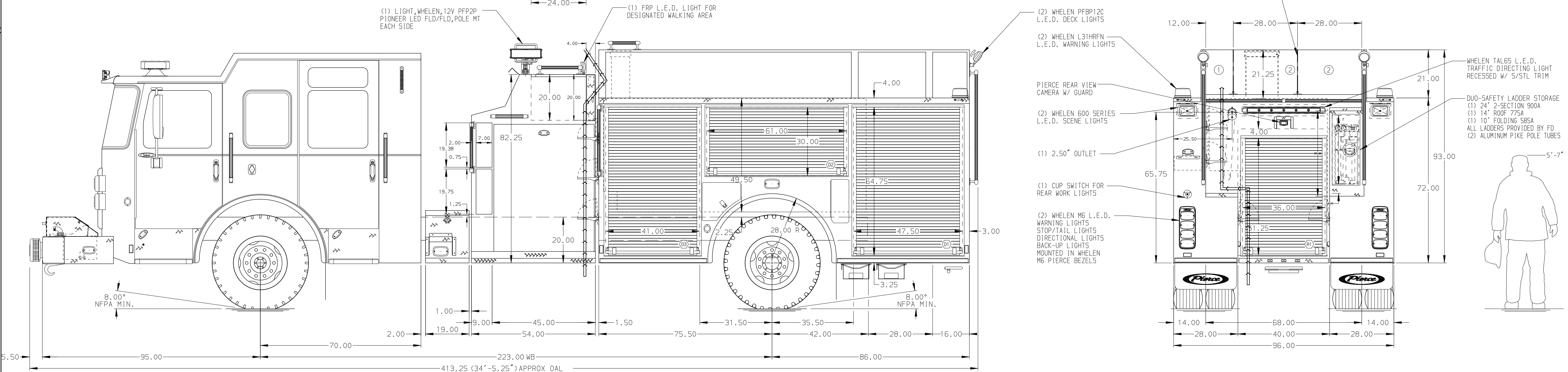
Foam Cell
Foam Cell Not Required



HOSEBED CAPACITY

BED 1
500' OF 3.00" D.J. POLY HOSE

BED 2
1000' OF 5.00" D.J. POLY HOSE



NOTE
DIMENSIONS SHOWN ARE APPROXIMATE AND ARE SUBJECT TO MINOR DEVIATIONS AS MAY OCCUR OR BE NECESSARY IN CONSTRUCTION. MINOR DETAILS NOT SHOWN.

| | | | | |
|---------|------|-----|----|----------|
| REV | DATE | BY | CH | SABER FR |
| 01MAY17 | RWI | JAF | | |
| 02MAR17 | JLA | RWI | | |

| | | | |
|----------------------------------|--|------------|-----------|
| Pierce MANUFACTURING INC. | | JOB NO. | 31135 |
| TITLE | | SCALE | DATE |
| Pierce Pumper Approval Drawing | | 1:24 | |
| MAKE | | DRAWN BY | 25JAN17 |
| PIERCE | | COL | |
| FOR | | CHECKED BY | 25JAN17 |
| City of Okeechobee | | SHE | |
| DWG NO. | | SHEET SIZE | SHEET NO. |
| 31135AD | | D | 1 OF 1 |