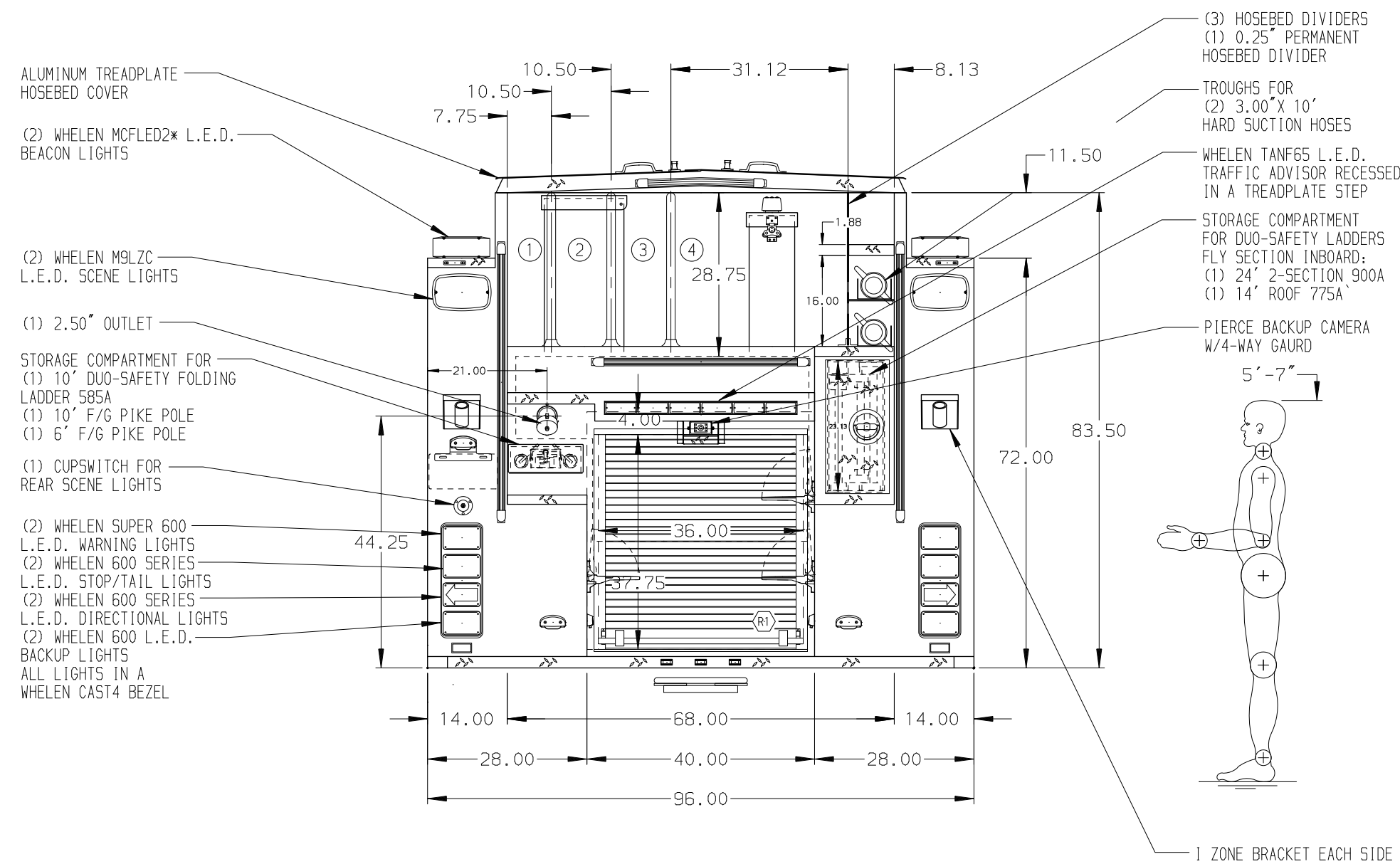


HOSEBED CAPACITIES	
①	500' OF 1.75" D.J. POLY HOSE
②	400' OF 2.50" D.J. POLY HOSE
③	400' OF 2.50" D.J. POLY HOSE
④	850' OF 5.00" D.J. POLY HOSE



GALVANNEAL

MAXIMUM O.A.H. 115.00"

SIDE ROLL PROTECTION

**NOTE**  
DIMENSIONS SHOWN ARE APPROXIMATE AND ARE SUBJECT TO MINOR DEVIATIONS AS MAY OCCUR OR BE NECESSARY IN CONSTRUCTION.  
MINOR DETAILS NOT SHOWN.

1. ALUMINUM TREADPLATE EXTERIOR REAR WALL OF CAB
2. AIR INLET/OUTLET WITH DISCONNECT FITTING LOCATED ON DRIVERS SIDE PUMP PANEL
3. S/STL PROTECTIVE GUARD FOR ROLL-UP DOOR LOCATED IN EACH SIDE BODY COMPARTMENT
4. PAINTED SHELF TRACKS LOCATED IN COMPARTMENT IN EACH SIDE BODY COMPARTMENT
5. ONE FULL WIDTH/DEPTH ADJUSTABLE SHELF IN COMPARTMENTS D1, D3, & P2;  
TWO IN COMPARTMENTS D2 & P1; AND THREE IN COMPARTMENT D3
6. ONE ADJUSTABLE SLIDE-OUT TRAY LOCATED IN COMPARTMENT D3
7. ONE FLOOR MOUNTED SLIDE-OUT TRAY IN COMPARTMENT R1
8. PARTITION BETWEEN COMPARTMENTS D1/R1 AND P1/R1
9. ONE VERTICAL PARTITION IN COMPARTMENTS D2 & P1

10. ZIAMATIC SCBA HOLDER BRACKET LOCATED IN COMPARTMENT D2
11. LOUVERS IN COMPARTMENT P3 SHALL HAVE A REMOVABLE FILTER
12. CIRCUIT BREAKER PANEL LOCATED IN COMPARTMENT D3
13. 120V 1500W POWER INVERTER LOCATED IN COMPARTMENT D3
14. ONE HANNAY ELECTRIC REWIND CORD REEL MODEL 1616-17-18 LOCATED IN P1 WITH 200' OF 12/3 CABLE

REV	DATE	BY	CH	ARROW-XT
1	21JUN17	AMI	PPE	MAKE
2	24MAY17	AMI	PPE	PIERCE
3	13APR17	AMI	SMA	MODEL

Pierce MANUFACTURING INC.		JOB NO.	31136
SCALE 1:24		DATE	
DRAWN BY AMI		07APR17	
CHECKED BY CCA		07APR17	
SHEET SIZE D		SHEET NO.	1 OF 1

TITLE 1500-D-500 GAL POLY W/30 GAL FOAM CEL, 152" FOLER (3)X LAYS, DELUGE, BOOSTER REEL, LDRS BTWN BODY & TANK.

FOR VISALIA FIRE DEPARTMENT VISALIA, CALIFORNIA

DWG NO. 31136AD