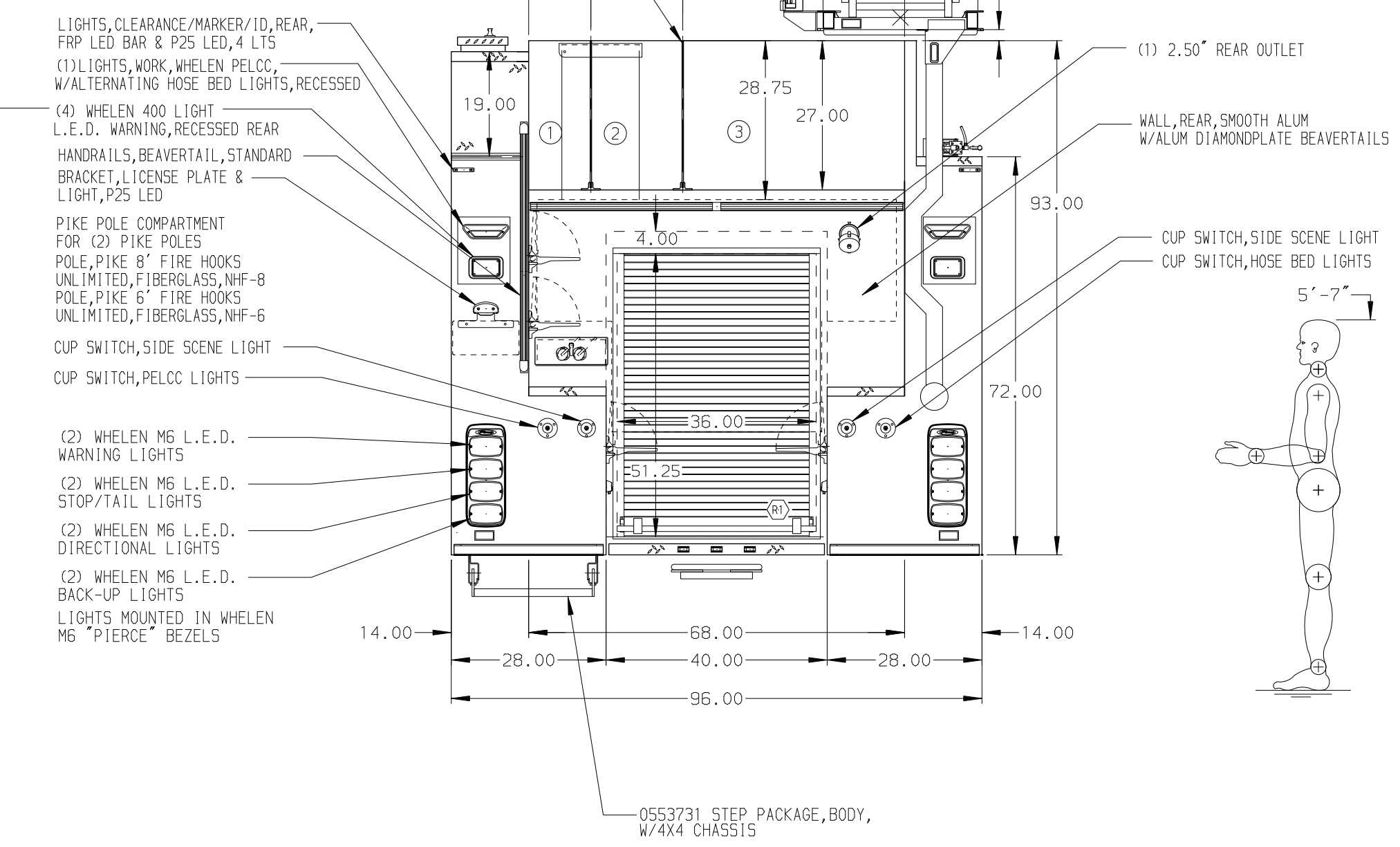
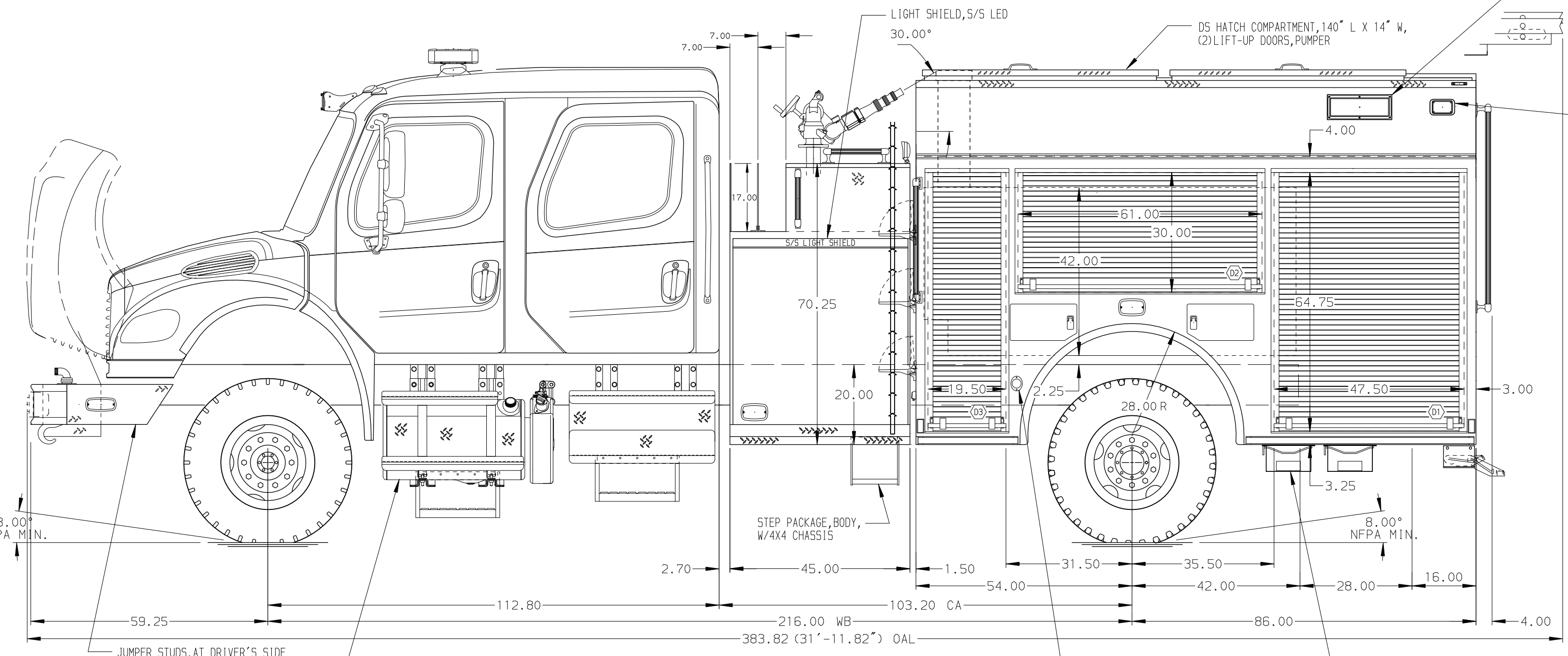


- HOSEBED CAPACITIES**
- ① 300' OF 3.00" D.J. POLY HOSE
 - ② 700' OF 3.00" D.J. POLY HOSE
 - ③ 1000' OF 5.00" L. D. HOSE
- (2) 0.25" SINGLE SHEET HOSEBED DIVIDERS
- RACK, HYDRAULIC, LADDER, RIGHT SIDE, AIR CLAMPS, LED, OFFSET ARM DUO-SAFETY LADDERS:
 (1) 35' 3" SECTION 1225A
 (1) 14' ROOF 775A LADDER, DUO-SAFETY FOLDING, 10" 585-4, WITH MOUNTING



ALUMINUM BODY

NOTE
 DIMENSIONS SHOWN ARE APPROXIMATE AND ARE SUBJECT TO MINOR DEVIATIONS AS MAY OCCUR OR BE NECESSARY IN CONSTRUCTION. MINOR DETAILS NOT SHOWN.

		JOB NO.	31158
		SCALE	DATE
TITLE	1250-D-750P, 140", DS & PS FULL HEIGHT FDLER 45" SIDE CONTROL, (2) 1.5" CROSSLAYS	DRAWN BY	JAF
FOR	NORTH VIEW FIRE NORTH OGDEN, UTAH	CHECKED BY	RWI
DWG NO.	31158AD	SHEET SIZE	SHEET NO.
		D	1 OF 1

REV	DATE	BY	CH	CHASSIS DATA
1	11JUL17	JLA	DDR	MAKE
2	26MAY17	JAF	DDR	FL
3	12MAR17	RWI	JAF	MODEL
				M2-106 4X4