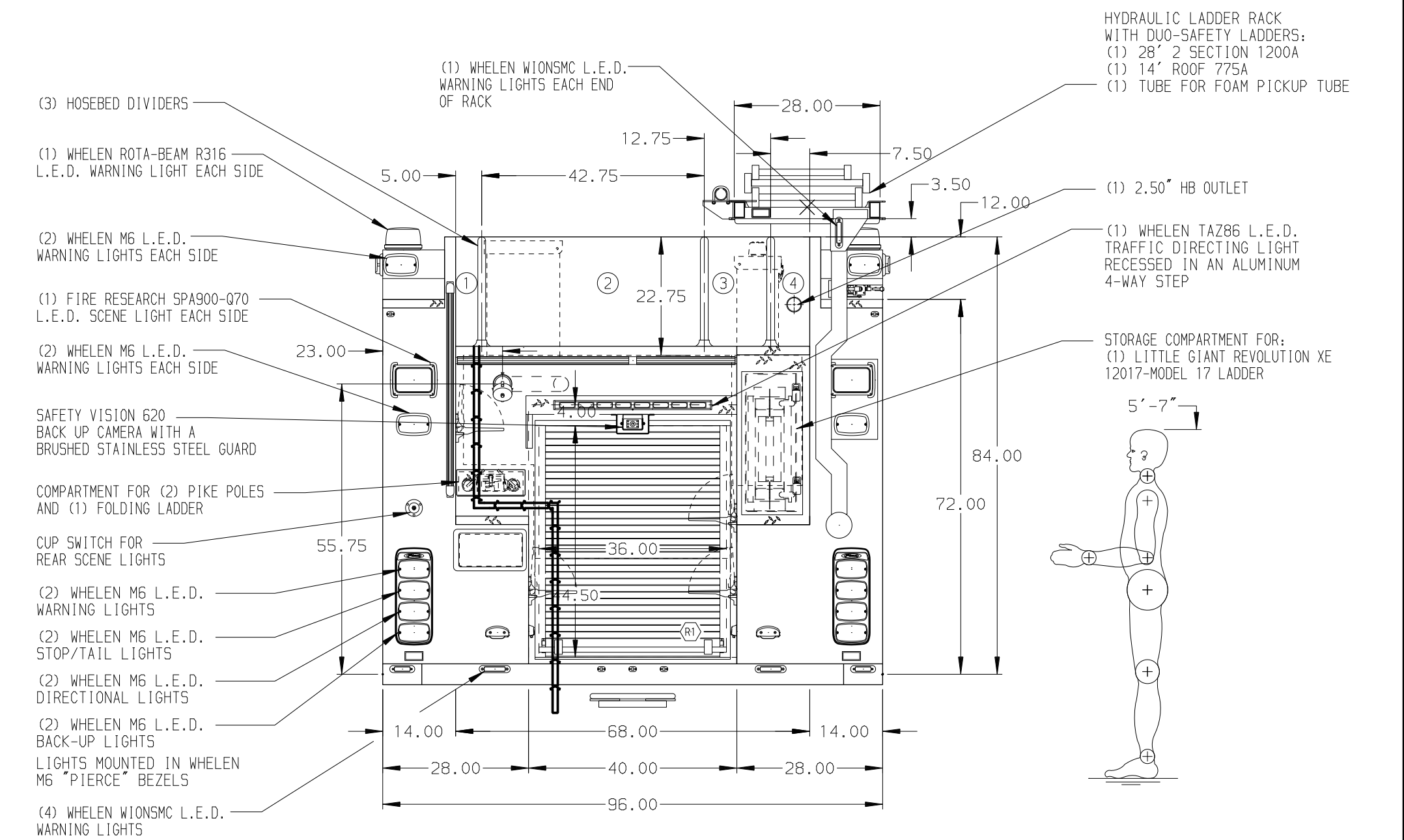


- HOSEBED CAPACITIES**
- ① - 250' OF 2.00" D.J. POLY HOSE
  - ② - 1000' OF 5.00" D.J. POLY HOSE
  - ③ - 400' OF 3.00" D.J. POLY HOSE
  - ④ - 250' OF 2.00" D.J. POLY HOSE



**NOTE**  
 DIMENSIONS SHOWN ARE APPROXIMATE AND ARE SUBJECT TO MINOR DEVIATIONS AS MAY OCCUR OR BE NECESSARY IN CONSTRUCTION. MINOR DETAILS NOT SHOWN.

- 1. AIR INLET/OUTLET WITH DISCONNECT FITTING LOCATED ON DS PUMP PANEL
- 2. BATTERY CHARGER/COMPRESSOR LOCATED IN DS EMS COMPARTMENT
- 3. 4\"/>

REV	DATE	BY	CH	VELOCITY FR
29SEP17	AMI	CHR		CHASSIS DATA
06SEP17	AMI	PJP		MAKE
11AUG17	NPA	ARI		PIERCE
31MAY17	AMI	SMA		MODEL

		JOB NO.	31164
		SCALE	1:24
TITLE	1500-D-750 GAL WATER, 40 GAL FOAM, 152\"/>		
FOR	PONDEROSA VOLUNTEER FIRE ASSOCIATION HOUSTON, TEXAS	DRAWN BY	AMI
DWG NO.	31164AD	CHECKED BY	CCA
		SHEET SIZE	D
		SHEET NO.	1 OF 1