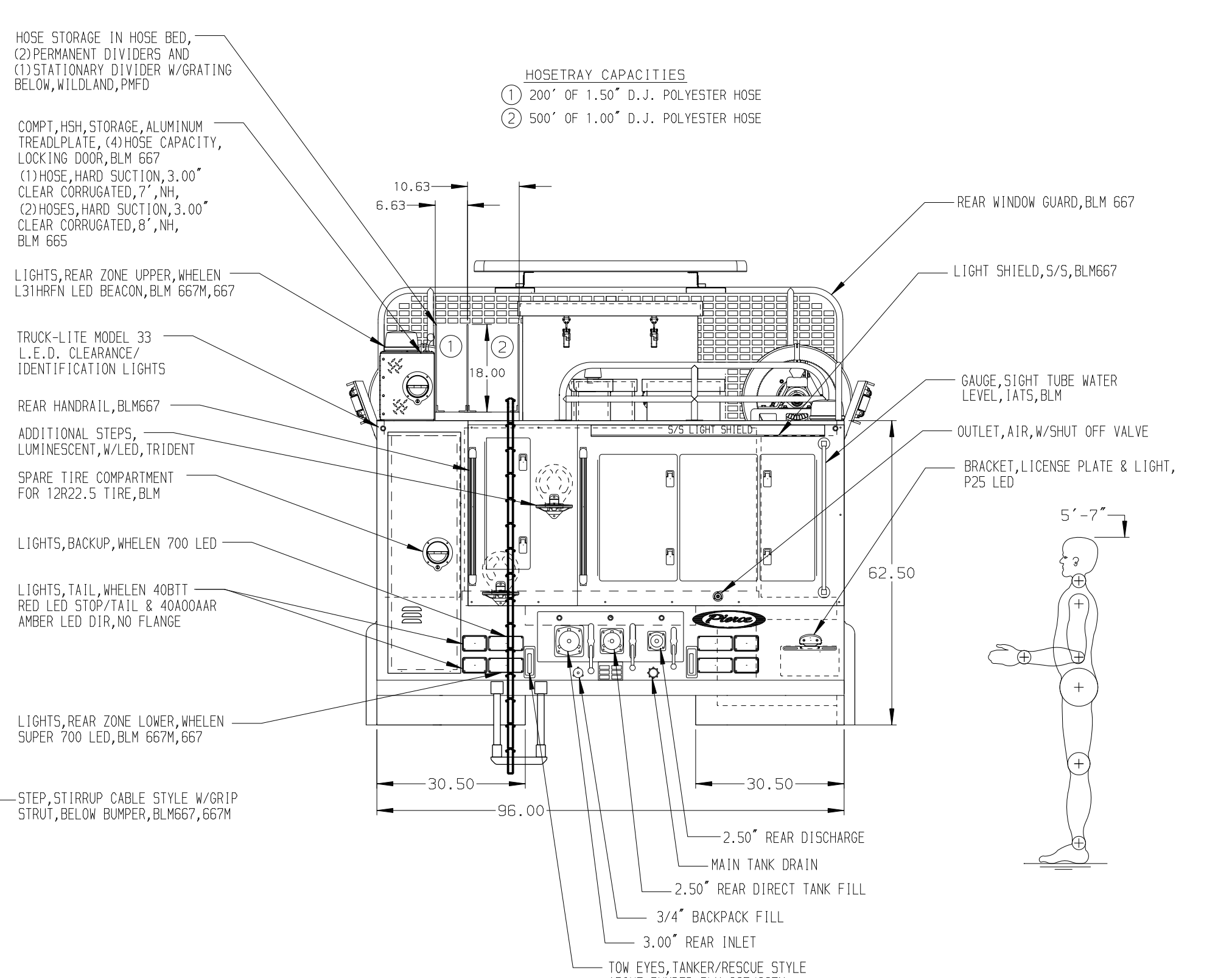
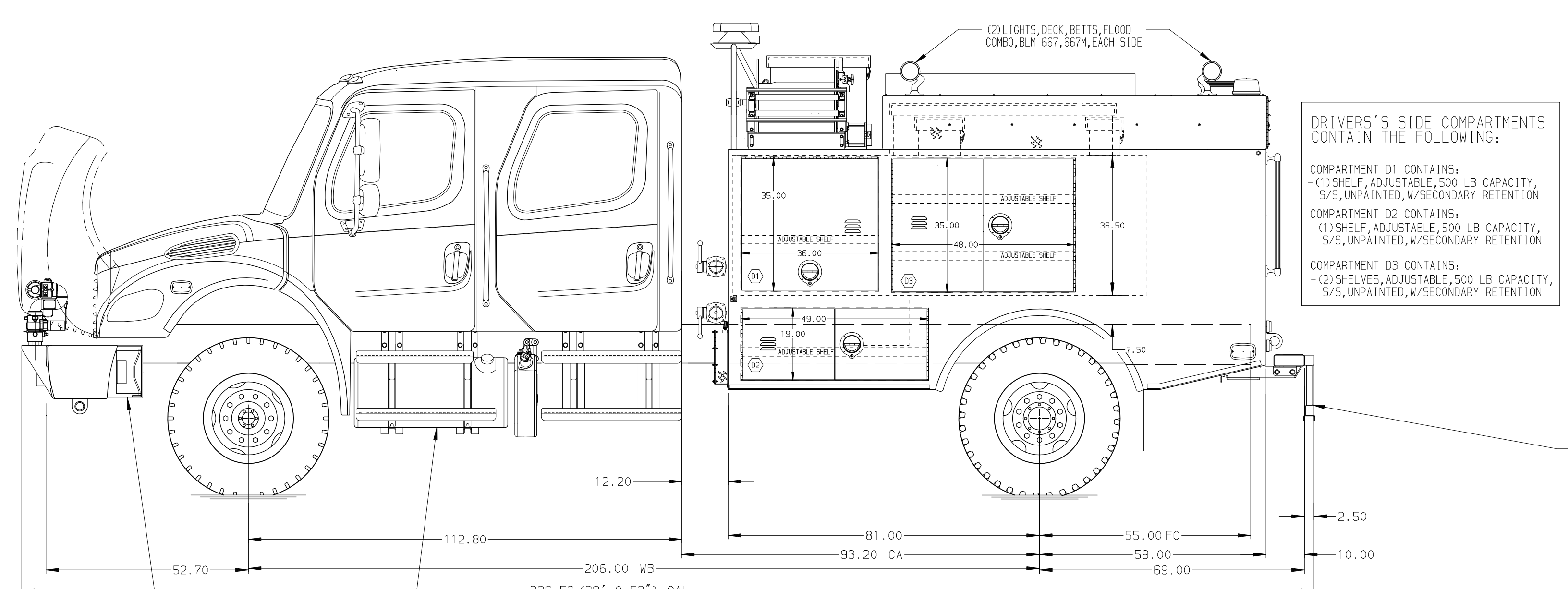
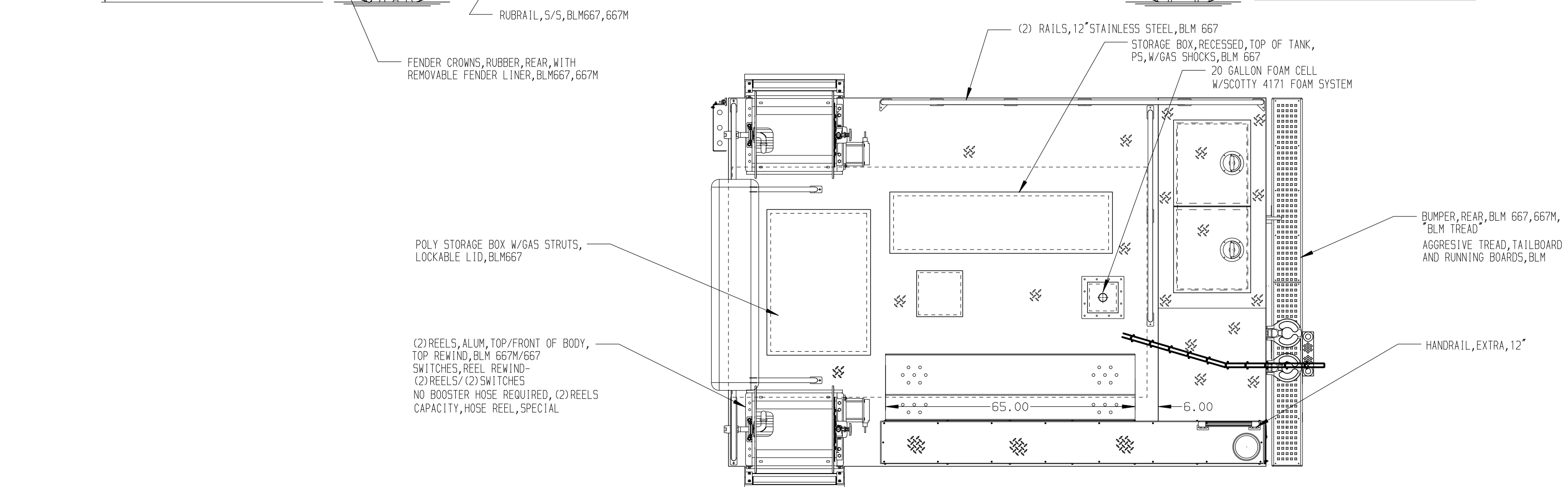


PASSENGER'S SIDE COMPARTMENTS CONTAIN THE FOLLOWING:

COMPARTMENT P1 CONTAINS:
 - (2) SHELVES, ADJUSTABLE, 500 LB CAPACITY, S/S, UNPAINTED, W/SECONDARY RETENTION
 - (1) TRAY, 250LB SLIDE-OUT, S/S, 3\"/>



STAINLESS STEEL BODY

SKID PLATE & BRUSH GUARD FOR FUEL & DEF TANKS, S/S, COMM CHASSIS STEPS AS PROVIDED BY MFG, 2-DOOR, 4-DOOR OR EXT'D CAB, NON-NFPA

NOTE
 DIMENSIONS SHOWN ARE APPROXIMATE AND ARE SUBJECT TO MINOR DEVIATIONS AS MAY OCCUR OR BE NECESSARY IN CONSTRUCTION. MINOR DETAILS NOT SHOWN.

NOTE: WINTERIZE BEFORE SHIPMENT, BLM667/667M

REV	DATE	BY	CH
27JUL17	JAF	DDR	
10MAY17	RWI	JAF	

		JOB NO.	31200
		SCALE	DATE
TITLE	800 GAL WATER W/20 FOAM CELL, HSE250 W/KUBOTA DARLEY (2) BOOSTER REELS, SCOTTY 4171 FOAM SYSTEM		
FOR	TEXAS A&M FOREST SERVICE HOUSTON, TEXAS		
DWG NO.	31200AD		
	DRAWN BY	JAF	05APR17
	CHECKED BY	RWI	07APR17
	SHEET SIZE	D	SHEET NO. 1 OF 1