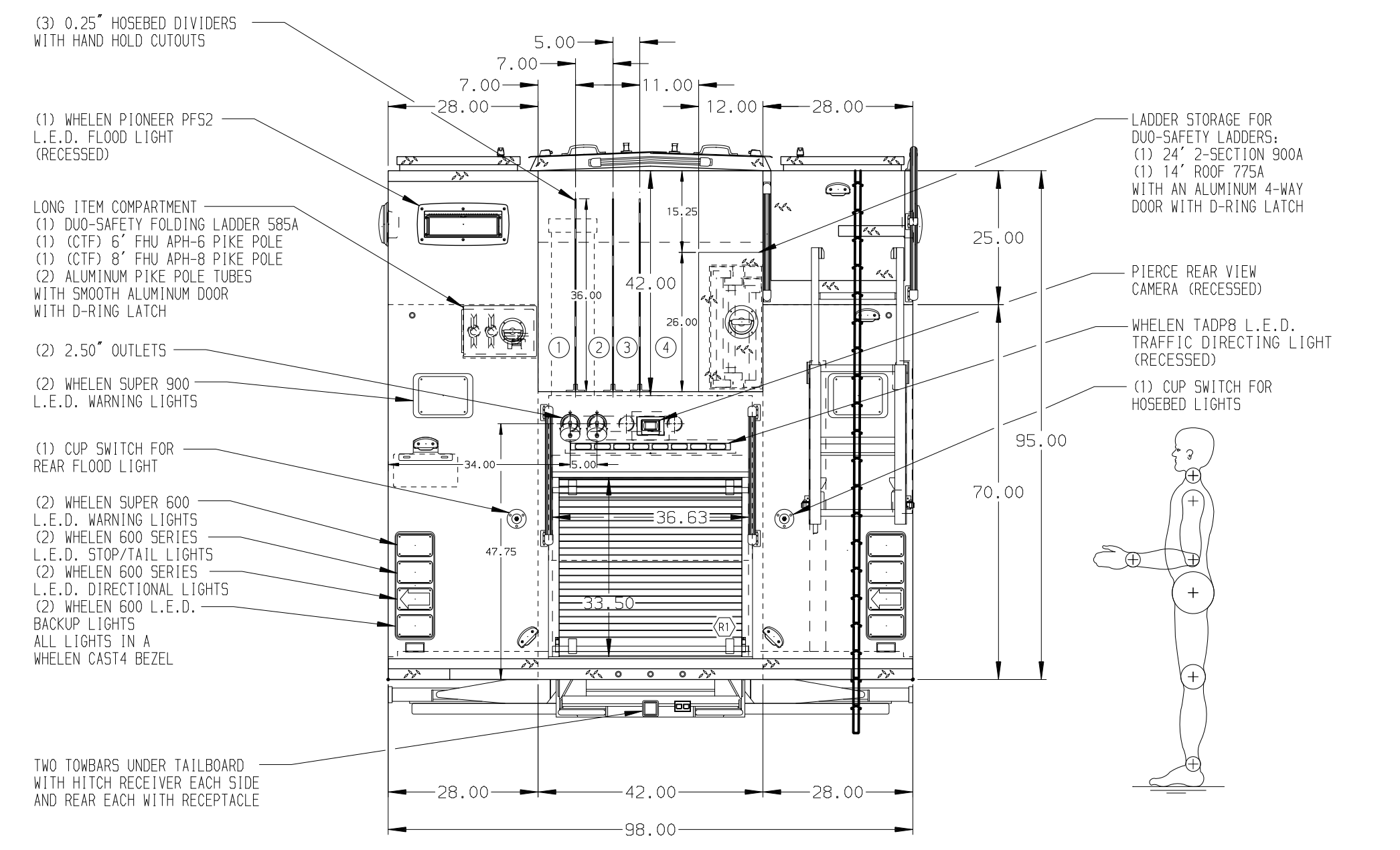
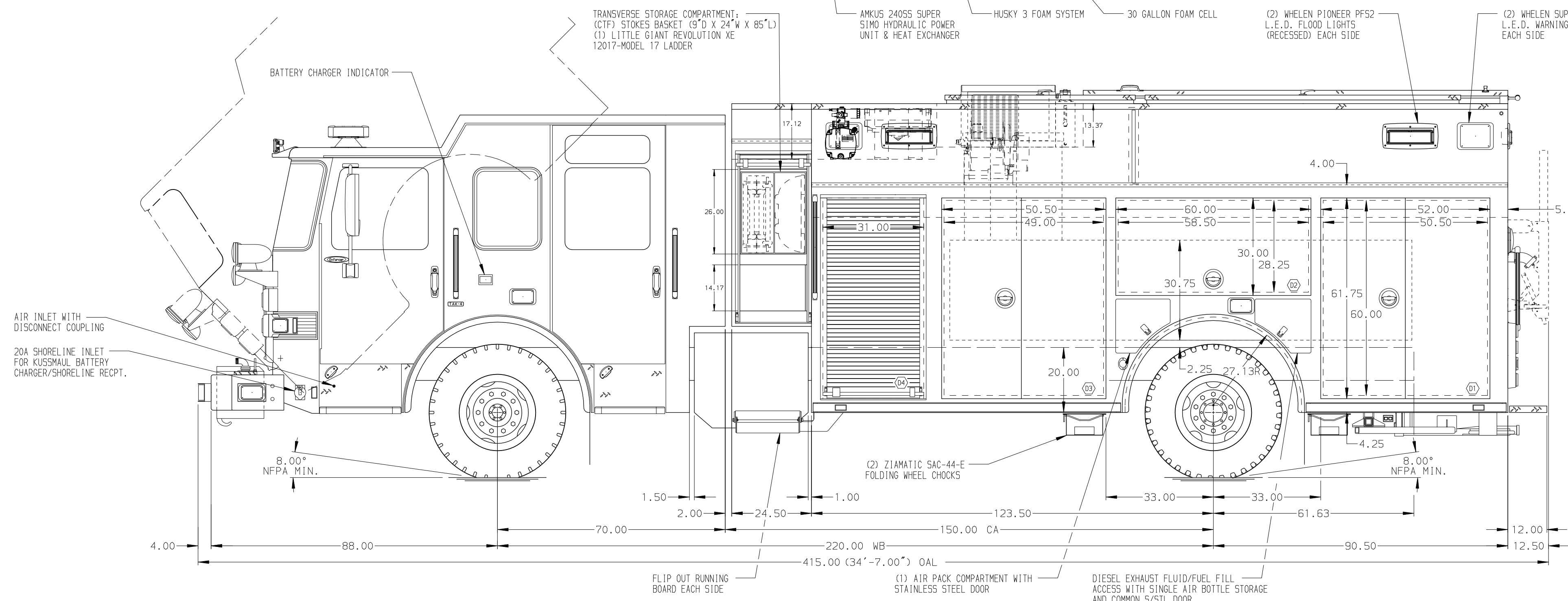


- HOSEBED CAPACITIES**
- ① 200' OF 3.00" MERCEDES AQUAFLOW HOSE
 - ② 300' OF 3.00" MERCEDES AQUAFLOW HOSE
 - ③ 250' OF 1.75" MERCEDES AQUAFLOW HOSE
 - ④ 800' OF 5.00" MERCEDES MEGAFLOW HOSE



ALUMINUM BODY

SIDE ROLL AND FRONTAL IMPACT PROTECTION

NOTE
DIMENSIONS SHOWN ARE APPROXIMATE AND ARE SUBJECT TO MINOR DEVIATIONS AS MAY OCCUR OR BE NECESSARY IN CONSTRUCTION. MINOR DETAILS NOT SHOWN.

- 1. QNSPOT AUTOMATIC TIRE CHAINS TO BE PROVIDED AT REAR
- 2. KUSSMAUL 1000 BATTERY CHARGER LOCATED BEHIND DRIVER SEAT
- 3. TWO 20A, 120V DUPLEX RECEPTACLES BEHIND DRIVER AND OFFICER'S SEATS

REV	DATE	BY	CH	ENFORCER
17JUL17	NPA	GHO		
12JUN17	NPA	GHO		

		JOB NO.	31228
		SCALE	1:24
TITLE 1500-D-600P, 570G WATER W/30G FOAM, 214" PUC RESCUE LADDERS IN HOSEBED, GENERATOR, HUSKY 3, REELS FOR FAIRVIEW TOWNSHIP FIRE DEPARTMENT NEW CUMBERLAND, PENNSYLVANIA	MAKE PIERCE MODEL ENFORCER	DRAWN BY	NPA
		CHECKED BY	CSH
DWG NO.	31228AD-SH1	SHEET SIZE	D
		SHEET NO.	1 OF 2