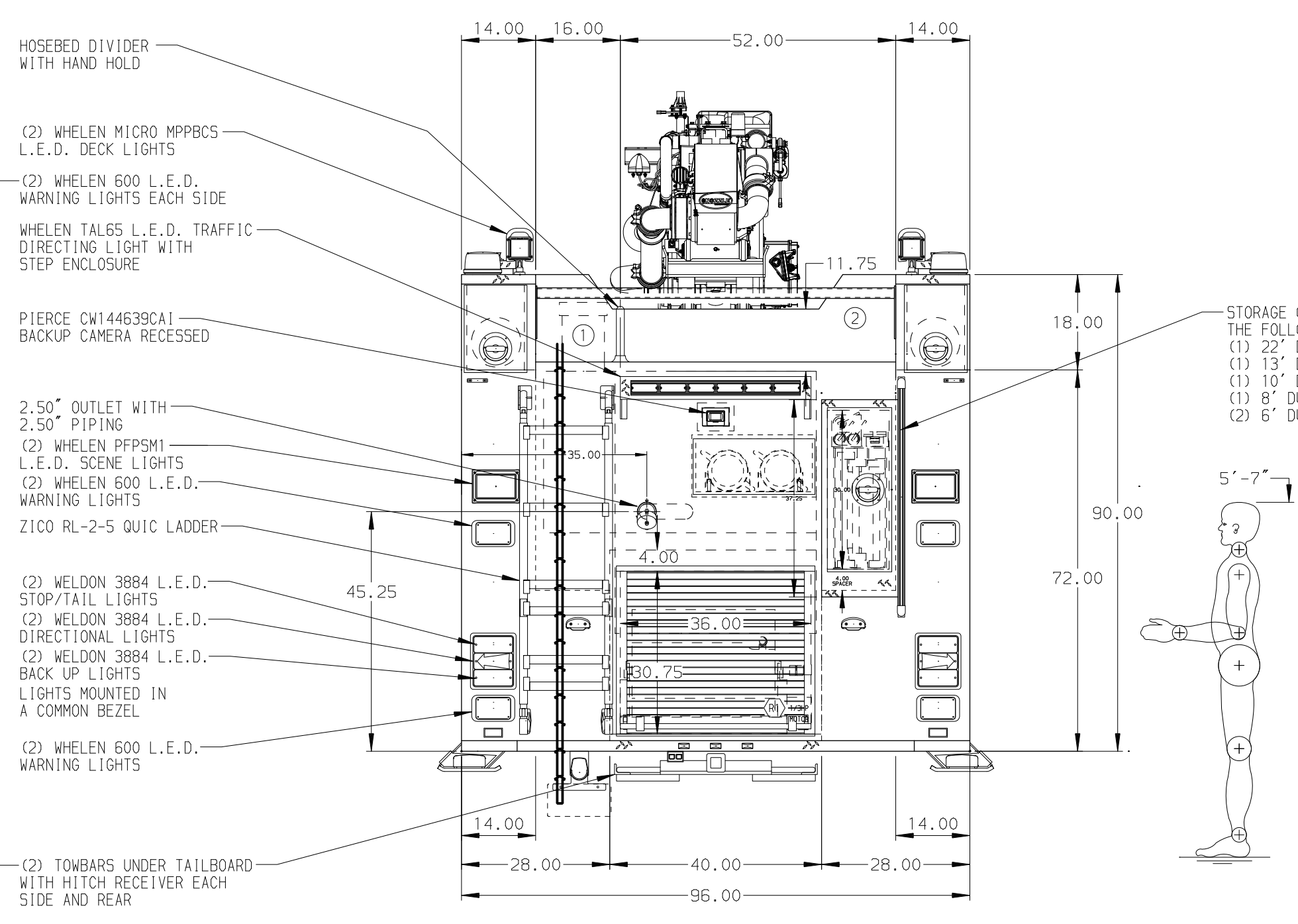
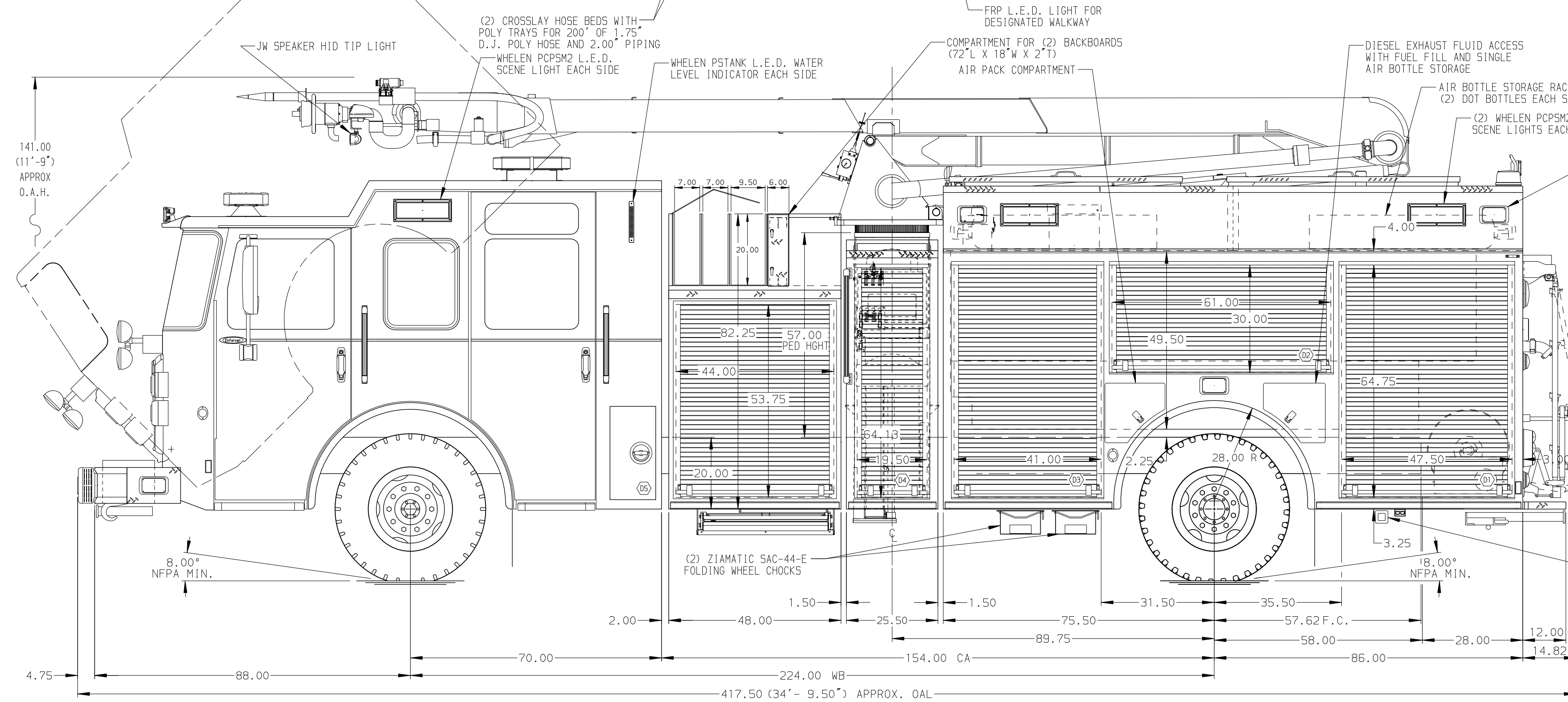


HOSEBED CAPACITIES

① 300' OF 2.50" D.J. HOSE

② 1050' OF 5.00" D.J. HOSE



ALUMINUM BODY    MAXIMUM O.A.H. 142.00"    MAXIMUM O.A.L. 420.00"

NOTE  
DIMENSIONS SHOWN ARE APPROXIMATE AND ARE SUBJECT TO MINOR DEVIATIONS AS MAY OCCUR OR BE NECESSARY IN CONSTRUCTION. MINOR DETAILS NOT SHOWN.

- HANNAY EF34-23-24 ELECTRIC REWIND BOOSTER REEL WITH A CAPACITY FOR 200' OF 1.00" HOSE
- AIR INLET WITH DISCONNECT FITTING LOCATED IN DRIVER SIDE STEP WELL
- SHORELINE RECEPTACLE LOCATED IN DRIVER SIDE STEP WELL
- ONE FULL WIDTH/DEPTH ADJUSTABLE SHELF WITH SIDES IN COMPARTMENT-D1,P1,P3,TWO IN D3
- ONE FLOOR MOUNTED SLIDE-OUT TRAY WITH SIDES IN COMPARTMENT-D1,P1
- ONE DUPLEX RECEPTACLE IN COMPARTMENT-P4
- HUSKY 12 FOAM SYSTEM LOCATED IN PUMP HOUSE

REV	DATE	BY	CH	ENFORCER
13JUN17	BST	PJP		CHASSIS DATA
08JUN17	BST	PJP		MAKE
19MAY17	C50	PJP		PIERCE
07APR17	COL	GRM		MODEL

		JOB NO.	31293		
		SCALE	DATE		
TITLE	P50 AERIAL SNOZZLE, 161" PUMPER BODY		DRAWN BY	BST	05APR17
FOR	1030 GALLON TANK-1000 GAL. WATER/30 GAL. FOAM CELL		CHECKED BY	GRM	05MAR17
DWG NO.	31293AD		SHEET SIZE	SHEET NO.	
			D	1 OF 1	