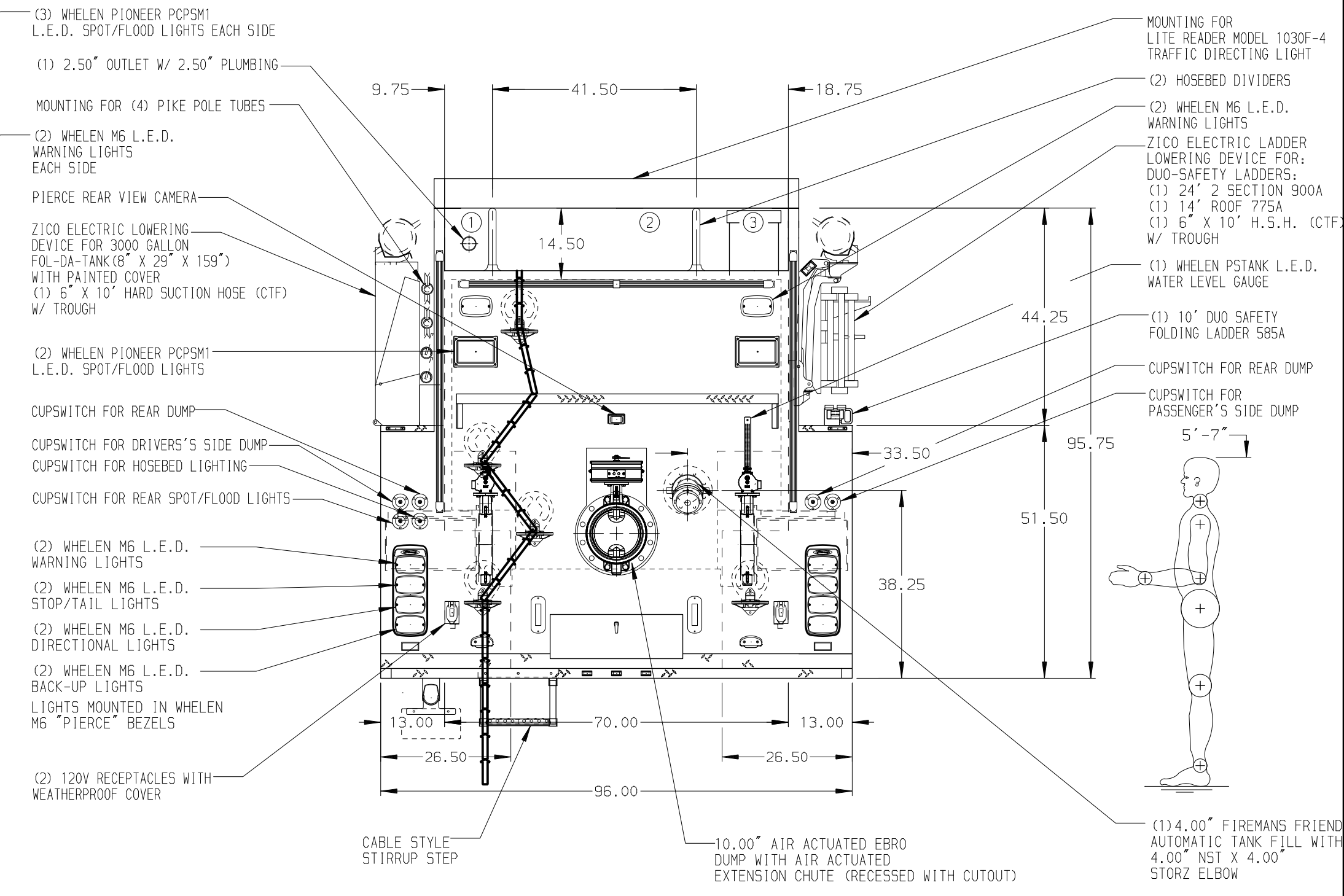
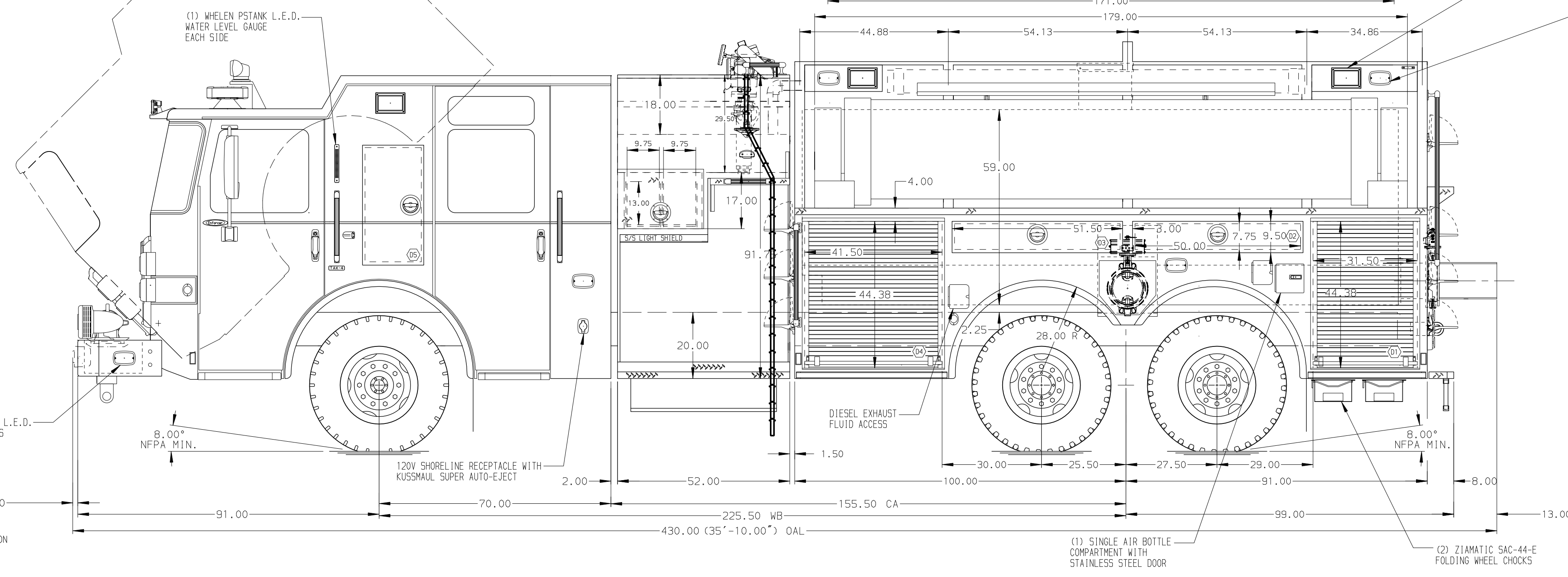


- HOSEBED CAPACITIES
- ① 300' OF 2.50" D.J. POLY HOSE
  - ② 1000' OF 5.00" D.J. POLY HOSE
  - ③ 450' OF 3.00" D.J. POLY HOSE



ALUMINUM BODY

SIDE ROLL AND FRONTAL IMPACT PROTECTION

NOTE  
DIMENSIONS SHOWN ARE APPROXIMATE AND ARE SUBJECT TO MINOR DEVIATIONS AS MAY OCCUR OR BE NECESSARY IN CONSTRUCTION. MINOR DETAILS NOT SHOWN.

1. AIR INLET WITH DISCONNECT COUPLING IN D.S. STEP WELL
2. DUAL L.E.D. LIGHT STRIPS LOCATED IN HOSE BED
3. DRIP PAN GUARD FOR ROLL-UP DOOR IN D1, D4, P1, AND P4
4. BATTERY CHARGER INDICATOR LOCATED ON DRIVER'S SEAT RISER
5. BATTERY CHARGER LOCATED BEHIND THE DRIVER'S SEAT
6. ONE ADJUSTABLE FULL WIDTH DEPTH SHELF IN D1, D4, P1, AND P4
7. ONE FLOOR MOUNTED SLIDE-OUT TRAY IN D1, P1, AND P4
8. TWO SLIDE-OUT ALUMINUM TOOLBOARDS IN D4
9. CIRCUIT BREAKER PANEL IN D3
10. (1) 120V 4-PLACE DUPLEX RECEPTACLE ON THE INBOARD SIDE OF THE DS EMS COMPARTMENT

11. (1) 120V SHORELINE POWERED RECEPTACLE IN THE FORWARD PORTION OF THE D.S. EMS COMPARTMENT, BEHIND THE OFFICER'S SEAT ON THE ENGINE TUNNEL, AND IN D3

REV	DATE	BY	CH	ENFORCER
090CT17	LST	COR		MAKE
20SEP17	LST	COR		PIERCE
29JUN17	LST	KBO		MODEL

		JOB NO.	31313
		SCALE	DATE
TITLE	1500-D-2500 GAL POLY, 191" TANDEM AXLE TANKER		
FOR	(3) XLAYS, ZICO LADDER RACK, ZICO FOLDING TANK RACK		
DWG NO.	CITY OF INVER GROVE HEIGHTS		
	INVER GROVE HEIGHTS, MINNESOTA		
	31313AD		
	D	SHEET NO.	1 OF 1