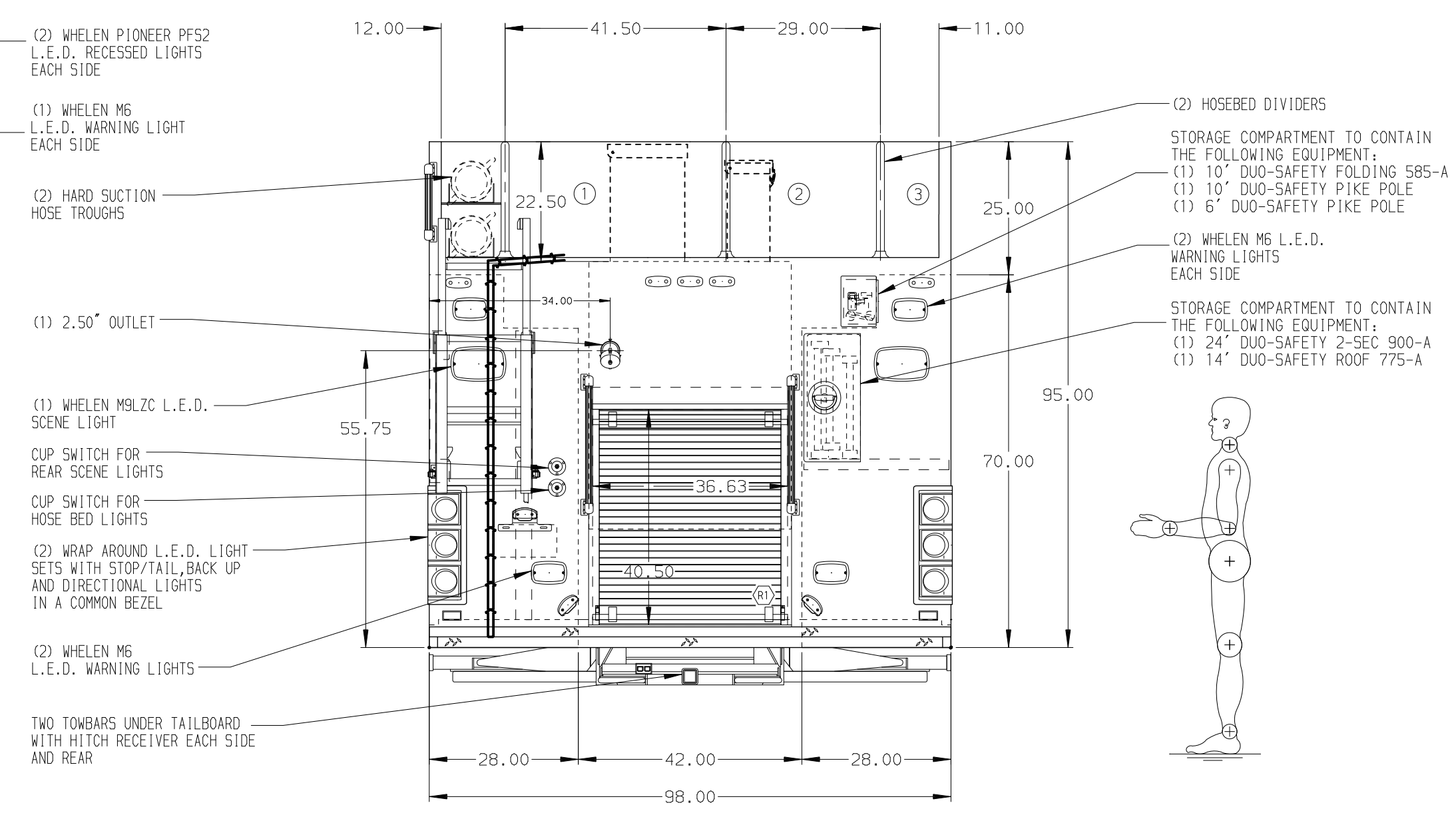
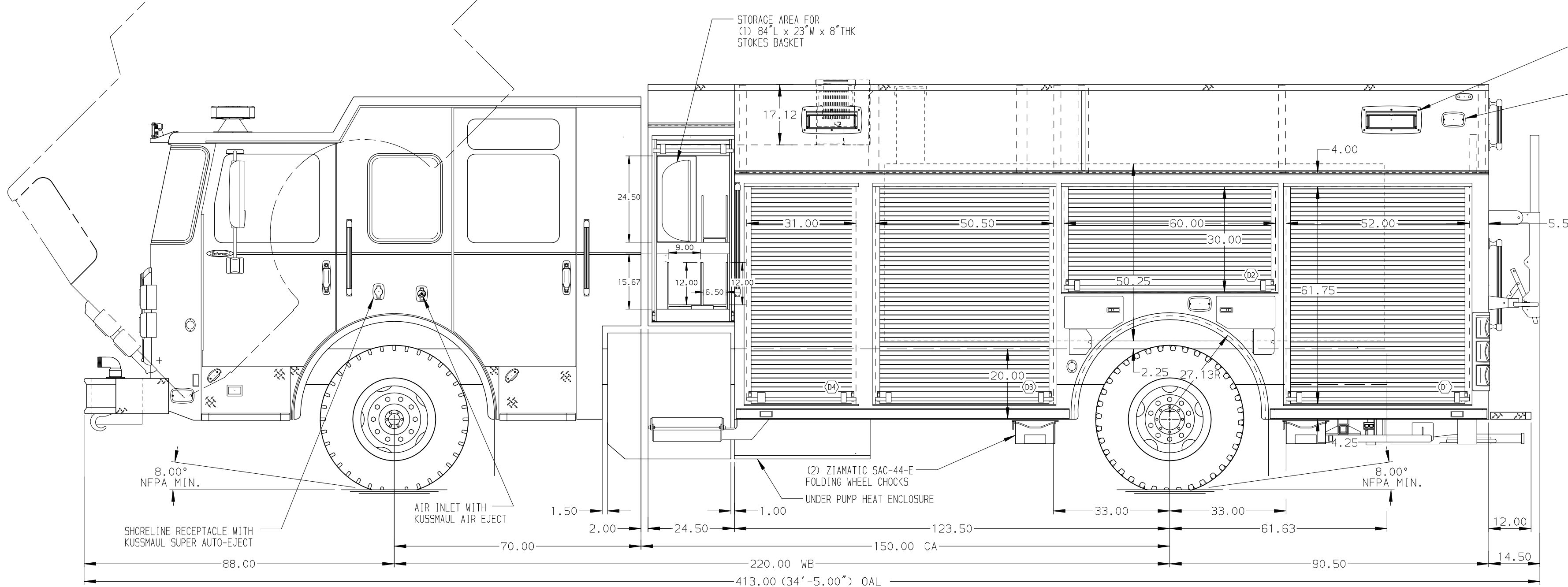


HOSEBED CAPACITIES

① 700' OF 5.00" D.J. POLY HOSE

② 600' OF 3.00" D.J. POLY HOSE

③ 400' OF 1.50" D.J. POLY HOSE



ALUMINUM BODY

SIDE ROLL AND FRONTAL IMPACT PROTECTION

NOTE
DIMENSIONS SHOWN ARE APPROXIMATE AND ARE SUBJECT TO MINOR DEVIATIONS AS MAY OCCUR OR BE NECESSARY IN CONSTRUCTION. MINOR DETAILS NOT SHOWN.

- ONSPOT AUTOMATIC TIRE CHAINS TO BE PROVIDED AT REAR
- BATTERY CHARGER LOCATED IN COMPARTMENT D4
- BATTERY CHARGE INDICATOR LOCATED ON DRIVER'S SEAT RISER
- DUAL L.E.D. LIGHT STRIPS LOCATED IN HOSE BED
- ONE FULL WIDTH/DEPTH ADJUSTABLE SHELF LOCATED IN COMPARTMENTS D2,P1,P3,R1, TWO IN D1,D3
- TWO SLIDE-OUT TOOL BOARDS WITH PEGBOARD PATTERN IN COMPARTMENT D3
- ONE VERTICAL PARTITION IN COMPARTMENT D3,TWO IN D1
- (2) ADDITIONAL POLY TRAYS SHIPPED LOOSE
- CIRCUIT BREAKER PANEL IN COMPARTMENT D3

CUSTOMER APPROVAL			
APPROVED BY:			
DATE:			
REV	DATE	BY	CH
20SEP17		JWO	COR
17AUG17		JWO	COR

Pierce MANUFACTURING INC.

TITLE: 1500-D-1025P 1000 GAL OF WATER W/ 25 GAL FOAM CELL
214" PUC RESCUE, (4) X-LAYS, LADDERS THRU BODY, DELUGE

FOR: WEYAUWEGA FIRE DEPARTMENT
WEYAUWEGA, WISCONSIN

DWG NO. 31318AD

JOB NO.	31318
SCALE	1:24
DATE	
DRAWN BY	JWO
DATE	19JUN17
CHECKED BY	CDU
DATE	20JUN17
SHEET SIZE	D
SHEET NO.	1 OF 1