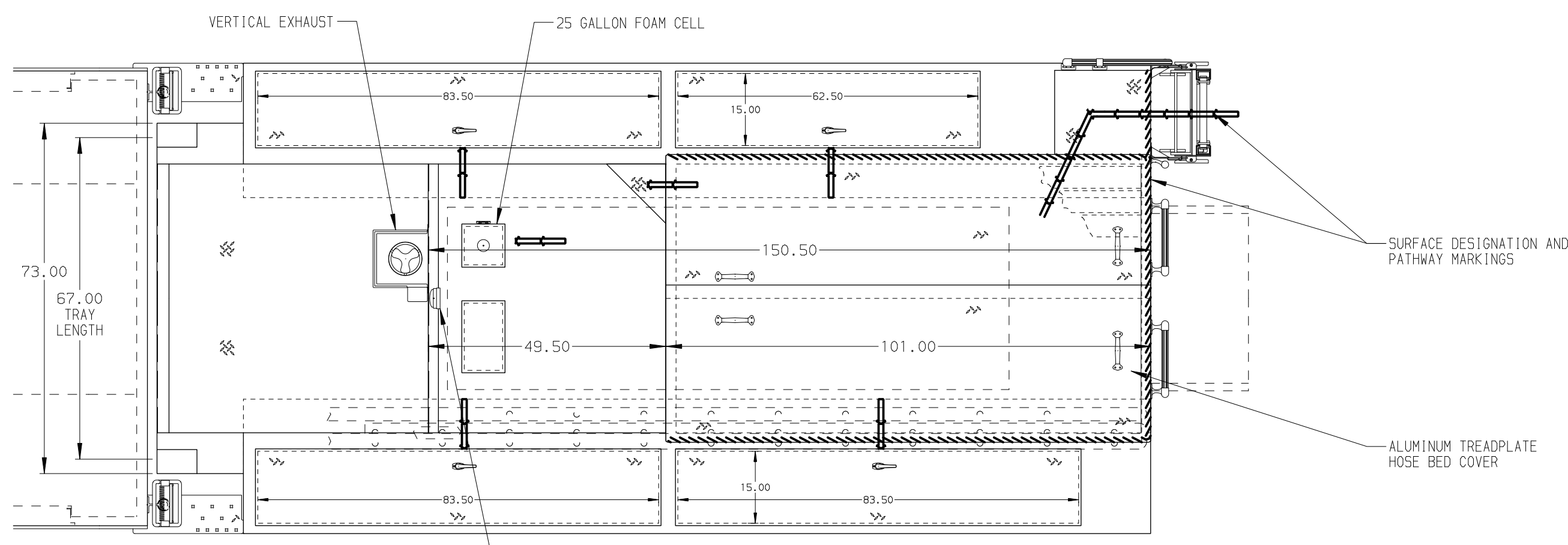
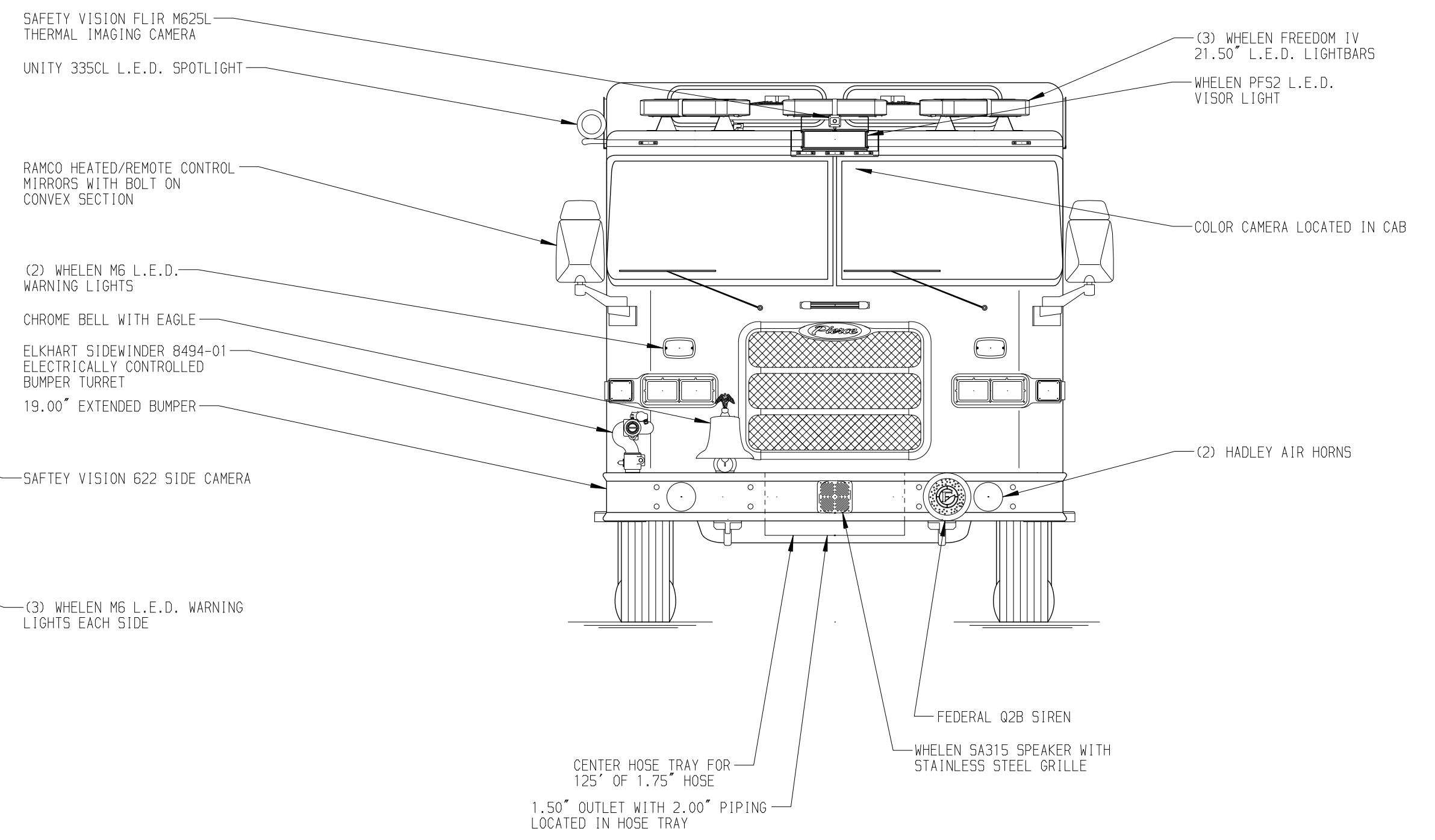
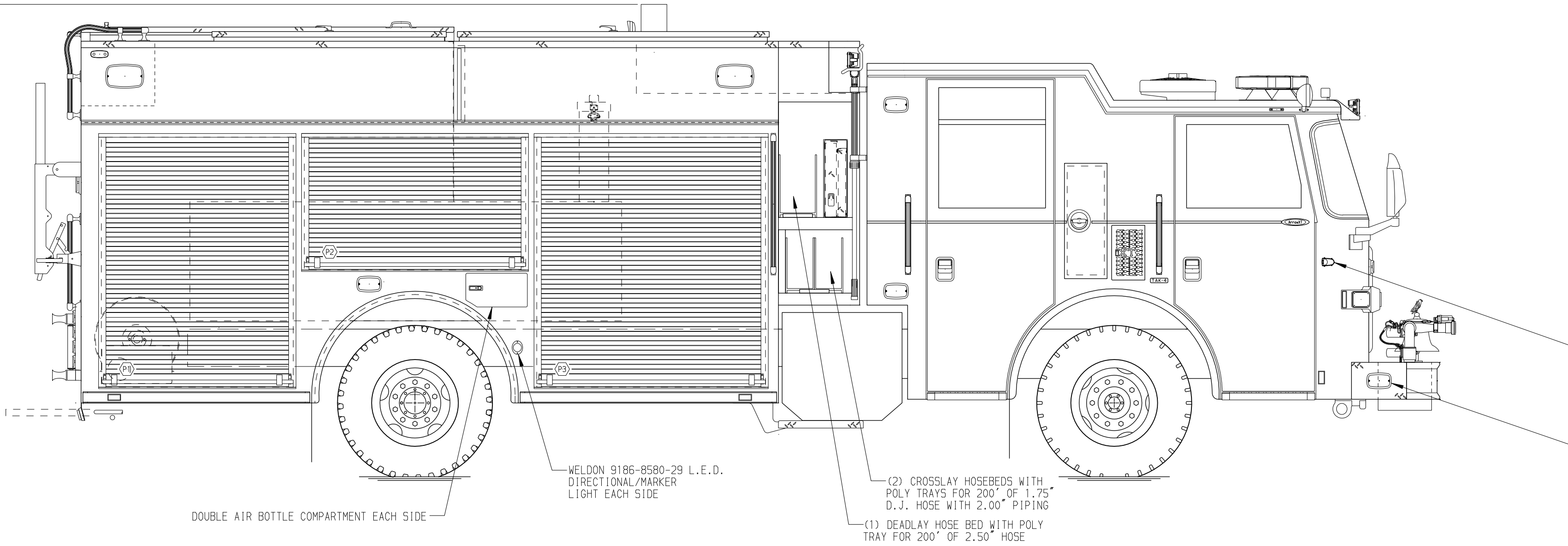
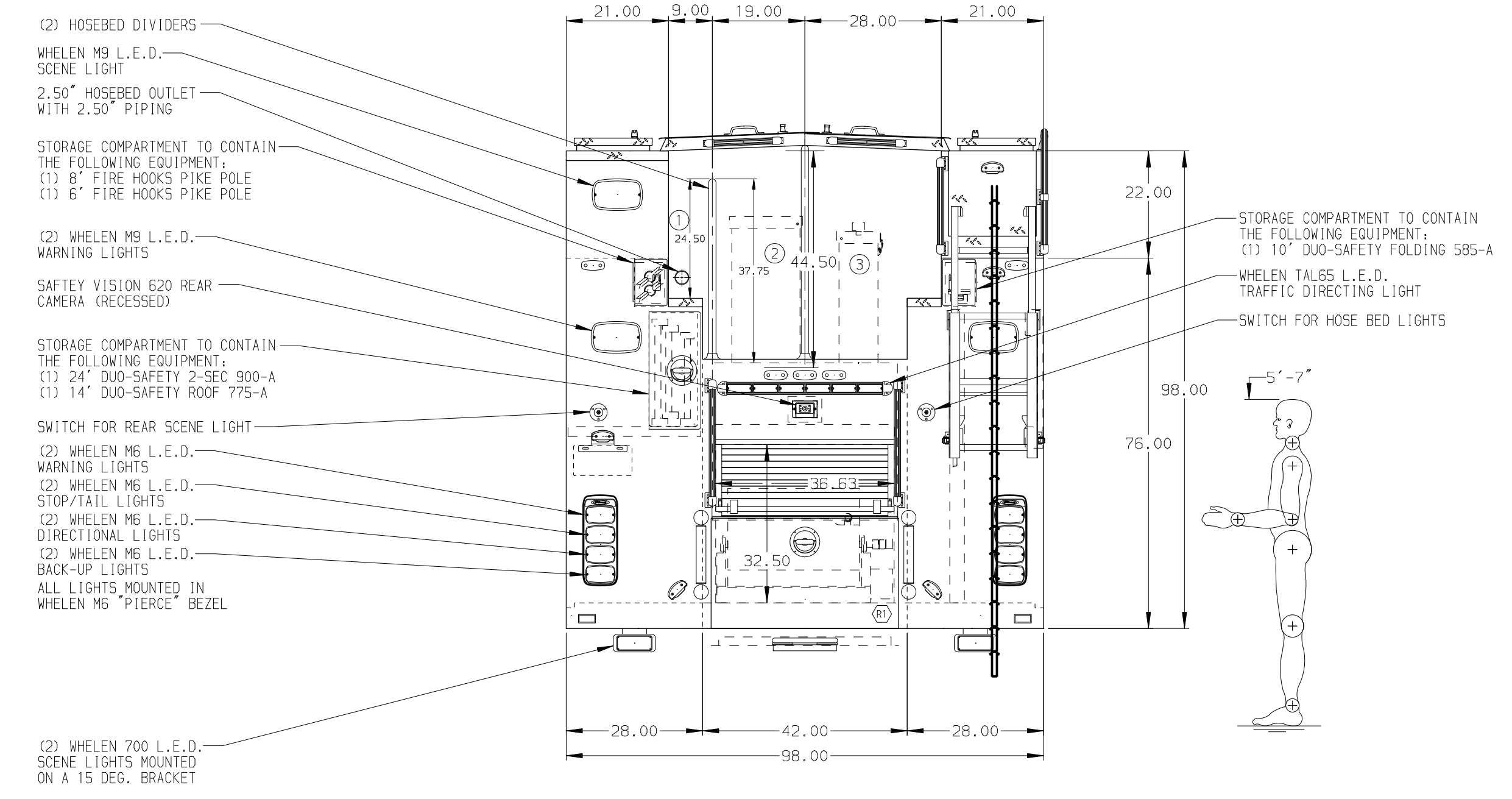
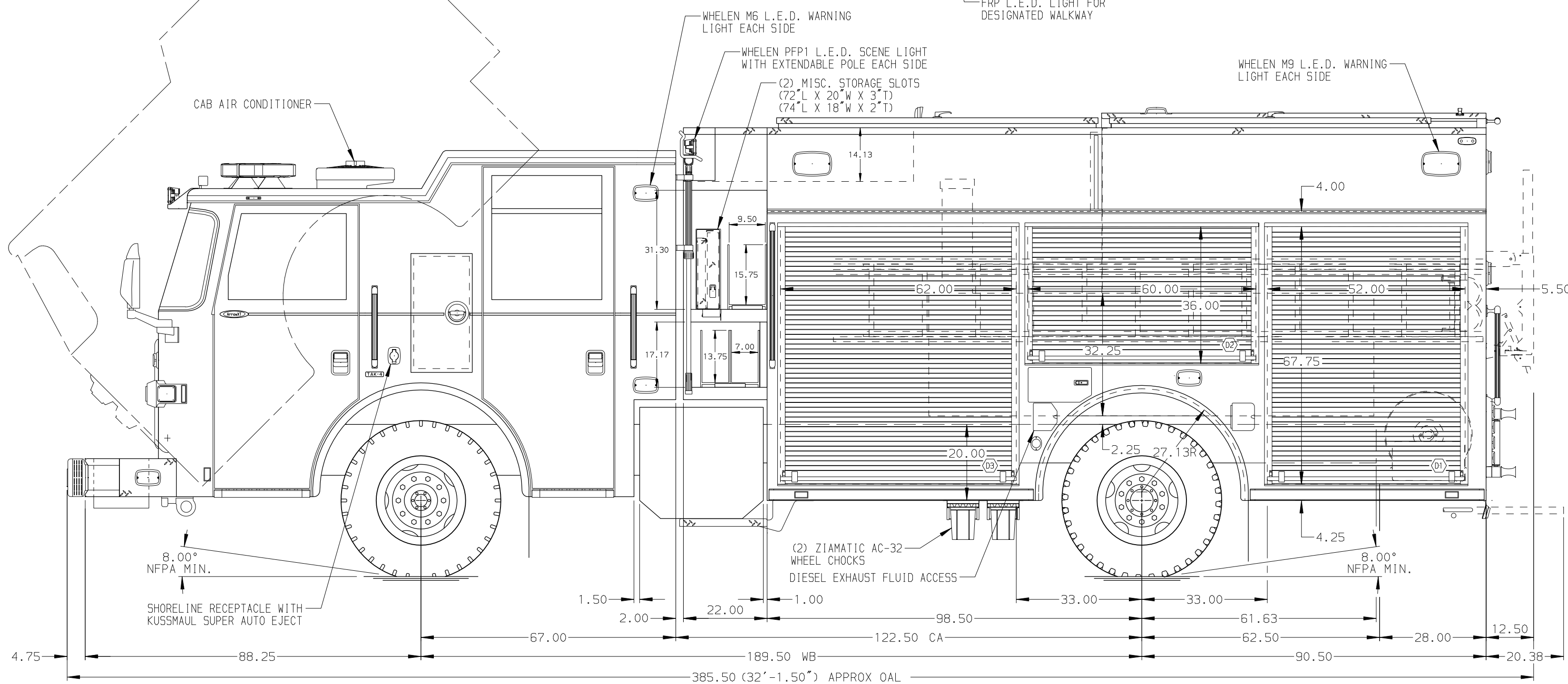


131.00
(10'-11")
APPROX
O.A.H.



- HOSEBED CAPACITIES
- ① 200' OF 2.50" D.J. HOSE
 - ② 1000' OF 2.50" D.J. HOSE
 - ③ 1000' OF 5.00" D.J. HOSE



ALUMINUM BODY MAXIMUM O.A.H. 157.00" FRONTAL IMPACT PROTECTION

NOTE
DIMENSIONS SHOWN ARE APPROXIMATE AND ARE SUBJECT TO MINOR DEVIATIONS AS MAY OCCUR OR BE NECESSARY IN CONSTRUCTION. MINOR DETAILS NOT SHOWN.

1. ONE HANNAY EF34-23-24 ELECTRIC REWIND BOOSTER REEL WITH A CAPACITY FOR 200' OF 1.00" HOSE IN COMPARTMENT-R1
2. HYDRAULIC OIL RESERVOIR FOR HUSKY 12 FOAM SYSTEM LOCATED WITHIN THE FRONT BODY MODULE
3. AIR INLET/OUTLET WITH DISCONNECT FITTING LOCATED IN DRIVER SIDE STEP WELL
4. BATTERY CHARGER LOCATED IN COMPARTMENT-D3
5. BATTERY CHARGER INDICATOR LOCATED IN DRIVER SIDE STEP WELL
6. ONE FULL WIDTH/DEPTH ADJUSTABLE SHELF WITH SIDES IN COMPARTMENT-D1; TWO IN P3
7. ONE ALUMINUM SLIDE-OUT TOOLBOARD WITH PEGBOARD PATTERN IN COMPARTMENT-D3
8. ONE VERTICAL PARTITION IN COMPARTMENT-P1
9. HORIZONTAL EQUIPMENT MOUNTING TRACKS IN COMPARTMENT-D2
10. TWO DUPLEX RECEPTACLES IN COMPARTMENT-P3
11. ONE ADJUSTABLE TILT/SLIDE-OUT TRAY IN COMPARTMENT-P2

		JOB NO.	31342
		SCALE	DATE
Pierce MANUFACTURING INC.		TITLE	1500-D-500P W/25 GAL. FOAM CELL, BOOSTER REEL
18SEP17 BST JJR 18AUG17 BST JJR 29JUN17 BST JBL		FOR	SALT LAKE CITY CORPORATION SALT LAKE CITY, UT
REV DATE BY CH ARROWXT		DWG NO.	31342AD
		CHECKED BY	JBL
		SHEET SIZE	D
		SHEET NO.	1 OF 1