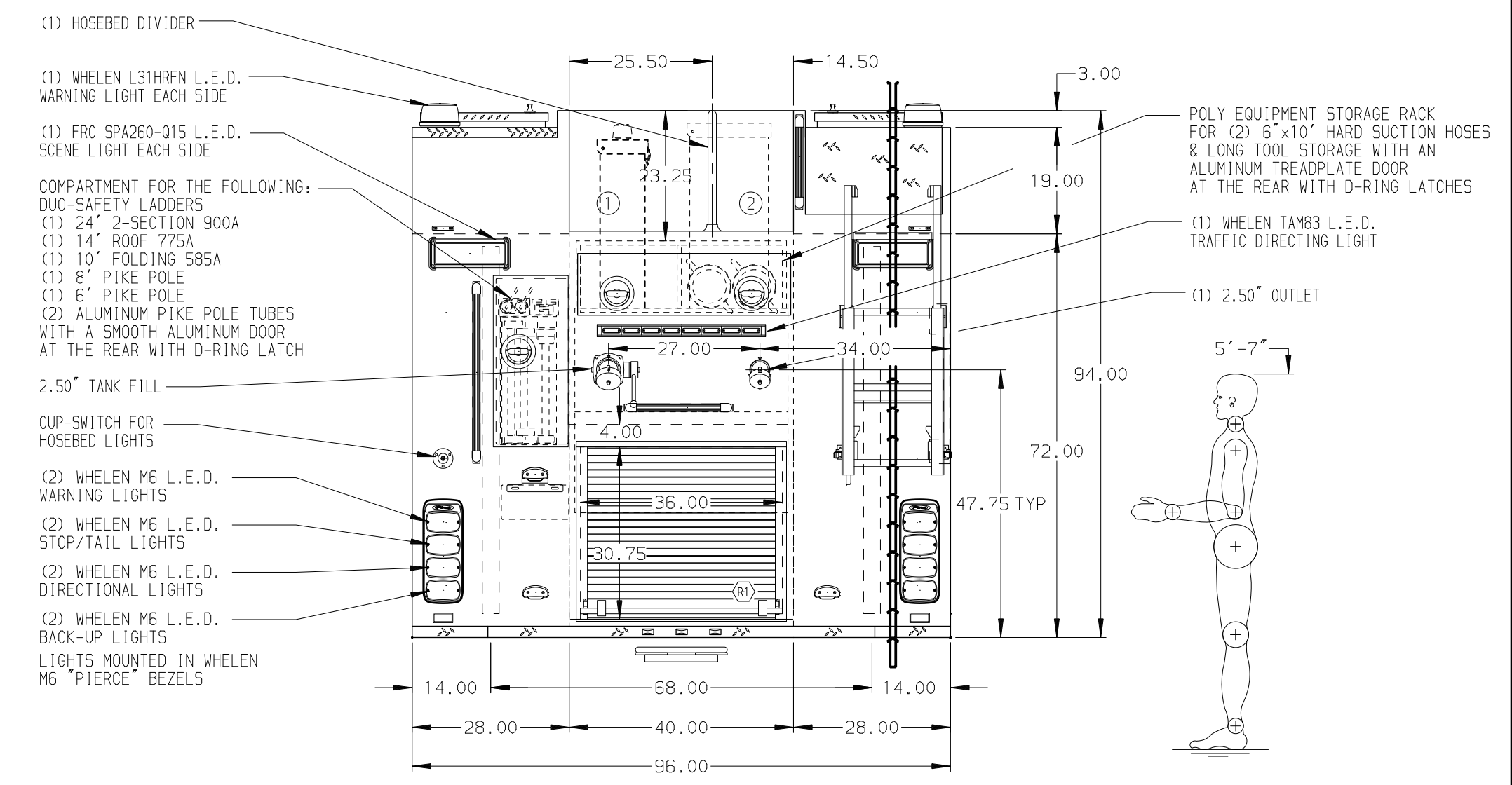


HOSEBED CAPACITIES
 ① - 1000' OF 5.00" HOSE
 ② - 400' OF 2.50" HOSE



ALUMINUM BODY MAXIMUM O.A.H. 125"

NOTE
 DIMENSIONS SHOWN ARE APPROXIMATE AND ARE SUBJECT TO MINOR DEVIATIONS AS MAY OCCUR OR BE NECESSARY IN CONSTRUCTION. MINOR DETAILS NOT SHOWN.

- ONSPOT AUTOMATIC TIRE CHAINS TO BE PROVIDED AT REAR
- AIR INLET WITH KUSSMAUL AIR EJECT LOCATED ON D5 STEP WELL
- BATTERY CHARGER LOCATED IN COMPARTMENT D3
- BATTERY CHARGE INDICATOR LOCATED ON DRIVER'S SEAT RISER
- ONE ADJUSTABLE FULL WIDTH/DEPTH SHELF IN COMPARTMENT D1 & D3, TWO IN P1 & P3
- ONE ADJUSTABLE HEIGHT SLIDE-OUT TRAY IN COMPARTMENT P3
- ONE ADJUSTABLE TILT/SLIDE-OUT TRAY IN COMPARTMENT P2
- ONE FLOOR MOUNTED SLIDE-OUT TRAY IN COMPARTMENT D1, D3 & P3
- SWING-OUT TOOL BOARD WITH PEGBOARD PATTERN IN COMPARTMENT D2
- SLIDE-OUT TOOL BOARD WITH PEGBOARD PATTERN IN COMPARTMENT P1
- SLIDE-OUT TOOL BOARD WITH PEGBOARD PATTERN & TRAY IN COMPARTMENT P1
- FOUR POLY TOOL BOXES IN COMPARTMENT P1
- RETENTION NETTING IN COMPARTMENT P1
- 1" SHAPED PARTITION IN COMPARTMENT P1
- ALUMINUM PEGBOARD WITH TRACKS ON THE REAR WALL OF COMPARTMENT D2 & D3
- CIRCUIT BREAKER PANEL IN COMPARTMENT D3
- ONE HANNAY ELECTRIC REWIND CORD REEL MODEL 1618-17-18 LOCATED IN HATCH COMPARTMENT ABOVE D3 & P3 WITH 200' OF 10/3 CABLE

REV	DATE	BY	CH	ENFORCER
29AUG17	AMI	MSA		CHASSIS DATA
09AUG17	AMI	KW1		MAKE
04AUG17	AMI	MSA		PIERCE
14JUN17	AMI	WKL		MODEL

		JOB NO.	31346
		SCALE	1:24
TITLE	1500-D-750P W/20G FOAM CELL, 171" FH&D F&R PUMPER (3) XLAYS, DELUGE, GENERATOR, HUSKY 3, EQUIPMENT RACK	DRAWN BY	AMI
FOR	BAINBRIDGE FIRE DISTRICT BAINBRIDGE, NEW YORK	CHECKED BY	WKL
DWG NO.	31346AD	SHEET SIZE	D
		SHEET NO.	1 OF 1