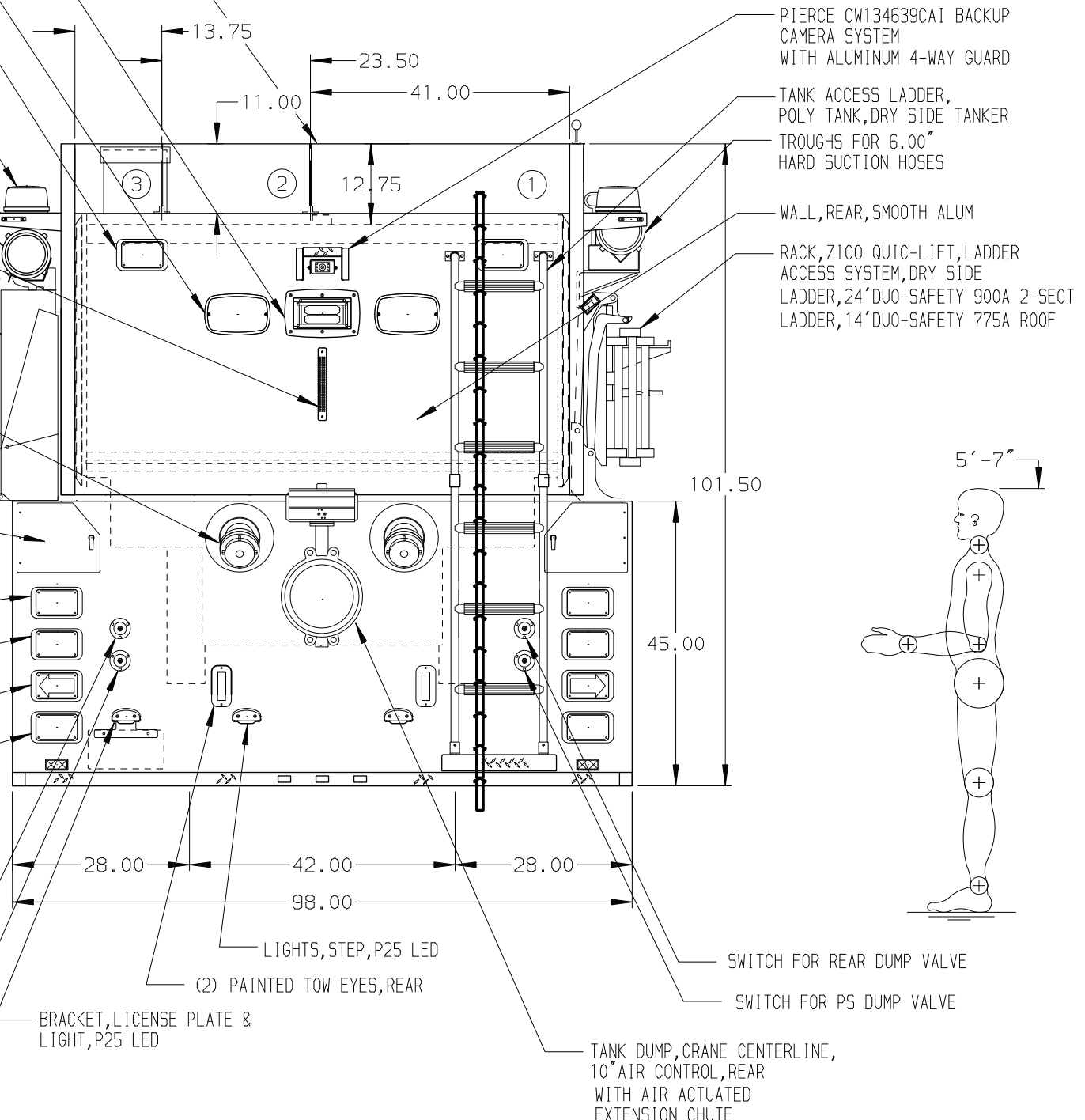


- (2) HOSEBED DIVIDER, 0.25\"/>
- LIGHT, WHELEN 12V PFP1 PIONEER LED FLOOD LIGHT, PBA103 RECESSED 15 DEG
- LIGHTS, REAR SCENE, WHELEN WSZC LED
- (1) WHELEN 600 LIGHT SUPER L.E.D. WARNING
- LIGHT, REAR ZONE UPPER, WHELEN L31HF LED BEACON REAR WARNING BRACKETS, S/S, STD MNT FOR DRY SIDE TANKER
- LIGHTS, CLEARANCE/MARKER/ID, REAR, FRP LED BAR & P25 LED, 4 LITS
- TROUGH (1), H.S.H., TOP OF ZICO TANK RACK, PAINTED, ALUM
- (4) WHELEN PSTANK L.E.D. WATER LEVEL INDICATOR LIGHT, EACH SIDE, REAR, FRONT OF GRILLE
- RACK, ZICO QUICK-LIFT, P15-HA HYDRAULIC TANK RACK, COVER, PAINTED COVER FOR 3000 GAL FUL-DR-TANK
- TANK FILL, DIRECT, REAR 4.0\"/>
- BROOM COMPARTMENTS, IPO HARD SUCTION HOSE COMPT, S/S, REAR DOOR, DS, 182\"/>
- (2) WHELEN 600 SERIES WARNING LIGHTS
- (2) WHELEN 600 SERIES STOP/TAIL LIGHTS
- (2) WHELEN 600 SERIES DIRECTIONAL LIGHTS
- (2) WHELEN 600 SERIES BACK-UP LIGHTS
- TANK DUMP, CRANE CENTERLINE, 10\"/>
- SWITCH FOR REAR SCENE LIGHTS
- SWITCH FOR DS DUMP VALVE
- LIGHTS, STEP, P25 LED
- (2) PAINTED TOW EYES, REAR
- SWITCH FOR REAR DUMP VALVE
- SWITCH FOR PS DUMP VALVE
- TANK DUMP, CRANE CENTERLINE, 10\"/>

- HOSEBED CAPACITIES
- (1) 1000' OF 5.00\"/>
  - (2) 750' OF 3.00\"/>
  - (3) 300' OF 1.75\"/>



**ALUMINUM BODY**

**NOTE**  
DIMENSIONS SHOWN ARE APPROXIMATE AND ARE SUBJECT TO MINOR DEVIATIONS AS MAY OCCUR OR BE NECESSARY IN CONSTRUCTION. MINOR DETAILS NOT SHOWN.

<b>Pierce MANUFACTURING INC.</b> BRADENTON, FLORIDA		JOB NO.	31355
		SCALE	DATE
TITLE 1000-D-3000 POLY, 182" DRYSIDE BODY 48" SIDE CONTROL, (2) SPEEDLAYS FOR NORTH STAR BOROUGH NORTH POLE, ALASKA DWC NO.	DATE	BY	CH
	030CT17	JLA	DDR
	28AUG17	JAF	DDR
23AUG17	JAF	DDR	PETERBILT
22MAY17	JLA	RW1	MODEL
REV	DATE	BY	CH
		367	
SHEET SIZE		31355AD	
SHEET NO.		1 OF 1	