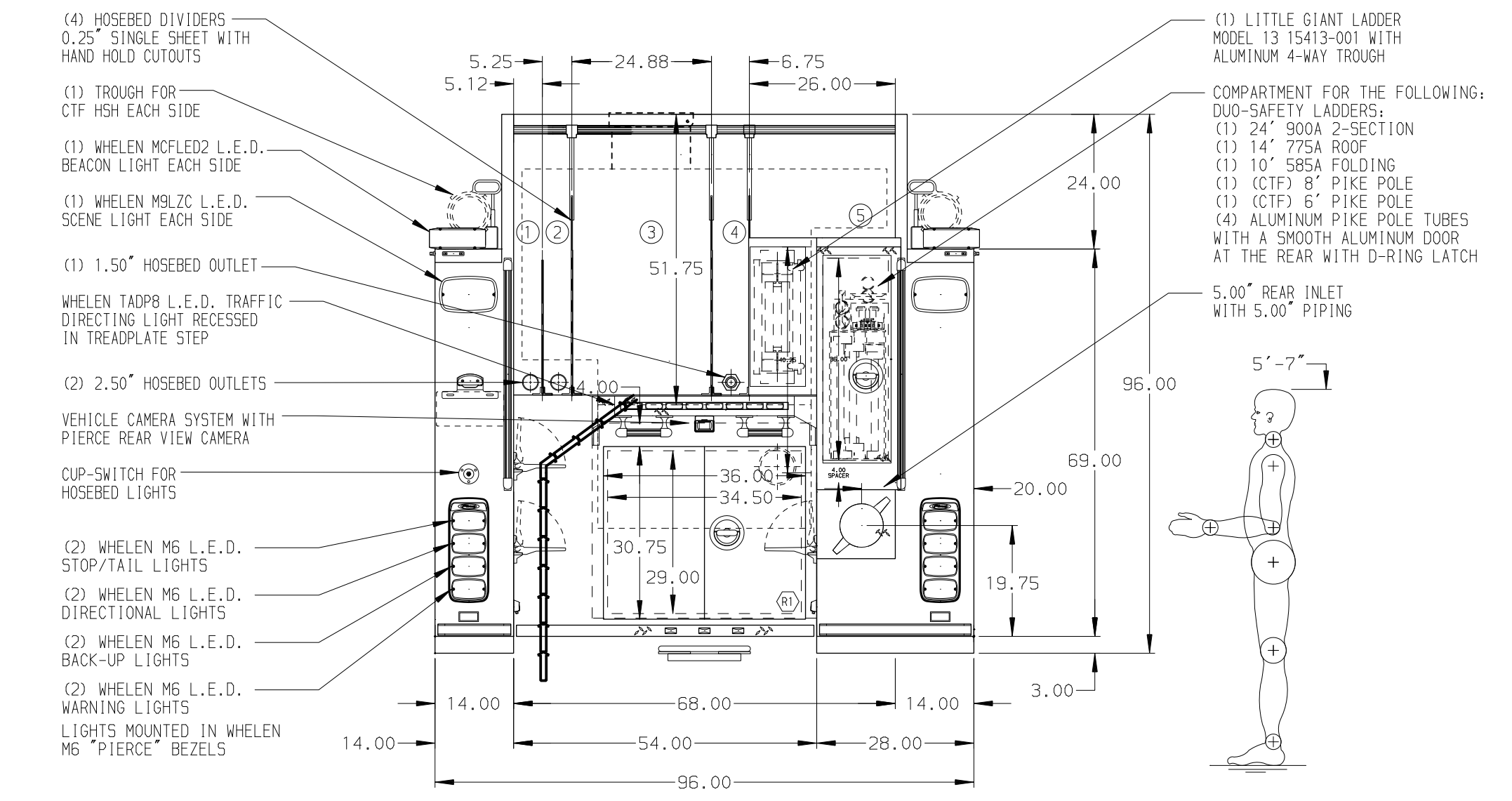
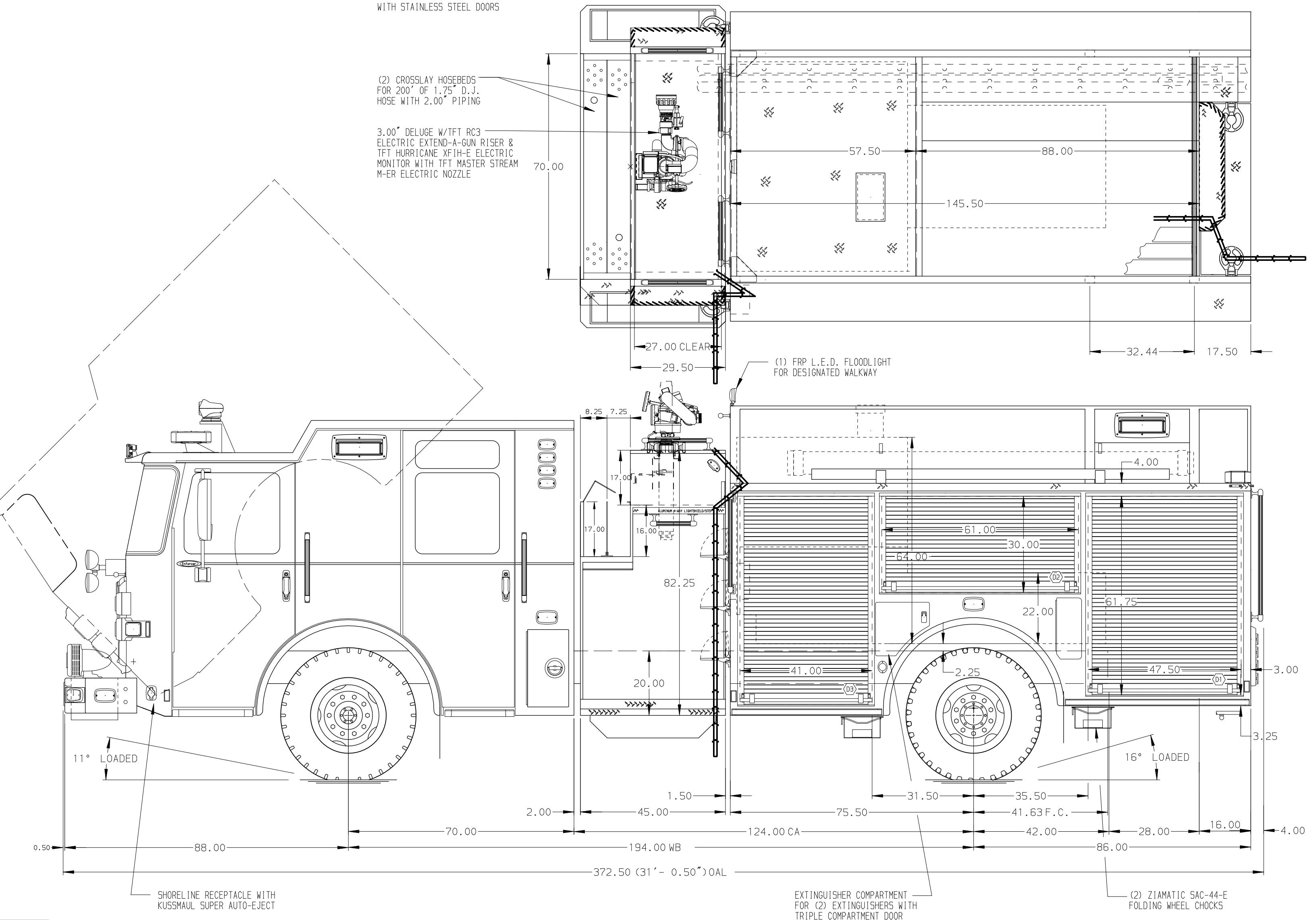


HOSEBED CAPACITIES

- ① 200' OF 2.50" D.J. POLY HOSE
- ② 200' OF 2.50" D.J. POLY HOSE
- ③ 1000' OF 5.00" D.J. POLY HOSE
- ④ 200' OF 1.75" D.J. POLY HOSE
- ⑤ 400' OF 2.50" D.J. POLY HOSE



ALUMINUM BODY

NOTE
DIMENSIONS SHOWN ARE APPROXIMATE AND ARE SUBJECT TO MINOR DEVIATIONS AS MAY OCCUR OR BE NECESSARY IN CONSTRUCTION. MINOR DETAILS NOT SHOWN.

1. AIR INLET WITH DISCONNECT COUPLING LOCATED IN DS STEP WELL
2. BATTERY CHARGE INDICATOR LOCATED ON DRIVER'S SEAT RISER
3. DUAL L.E.D. LIGHT STRIPS LOCATED IN HOSE BED
4. MIC AND SPEAKER BOX IN COMPARTMENT D3
5. ONE ADJUSTABLE FULL WIDTH/DEPTH SHELF IN COMPARTMENT D2, P1, P3, TWO IN D1 & D3
6. ONE FLOOR MOUNTED SLIDE-OUT TRAY IN COMPARTMENT P3 & R1
7. PAC TRAC ON THE WALL OF COMPARTMENT P2
8. ALUMINUM PEGBOARD WITH TRACKS ON THE REAR WALL OF COMPARTMENT D3

REV	DATE	BY	CH	ENFORCER
200CT17	AMI	PJP		MAKE
29SEP17	AMI	PJP		PIERCE
11JUL17	AMI	CCA		MODEL

		JOB NO.	31391
		SCALE	DATE
TITLE	2000-D-750 GAL POLY, 161" D.S. FH P.S. FH FDLR (2) XLAYS, LADDERS BTWN. TANK AND S. SHEET, DELUGE	DRAWN BY	AMI 23JUN17
FOR	SHERMAN FIRE PROTECTION DISTRICT SHERMAN, ILLINOIS	CHECKED BY	CCA 23JUN17
DWG NO.	31391AD	SHEET SIZE	SHEET NO.
		D	1 OF 1