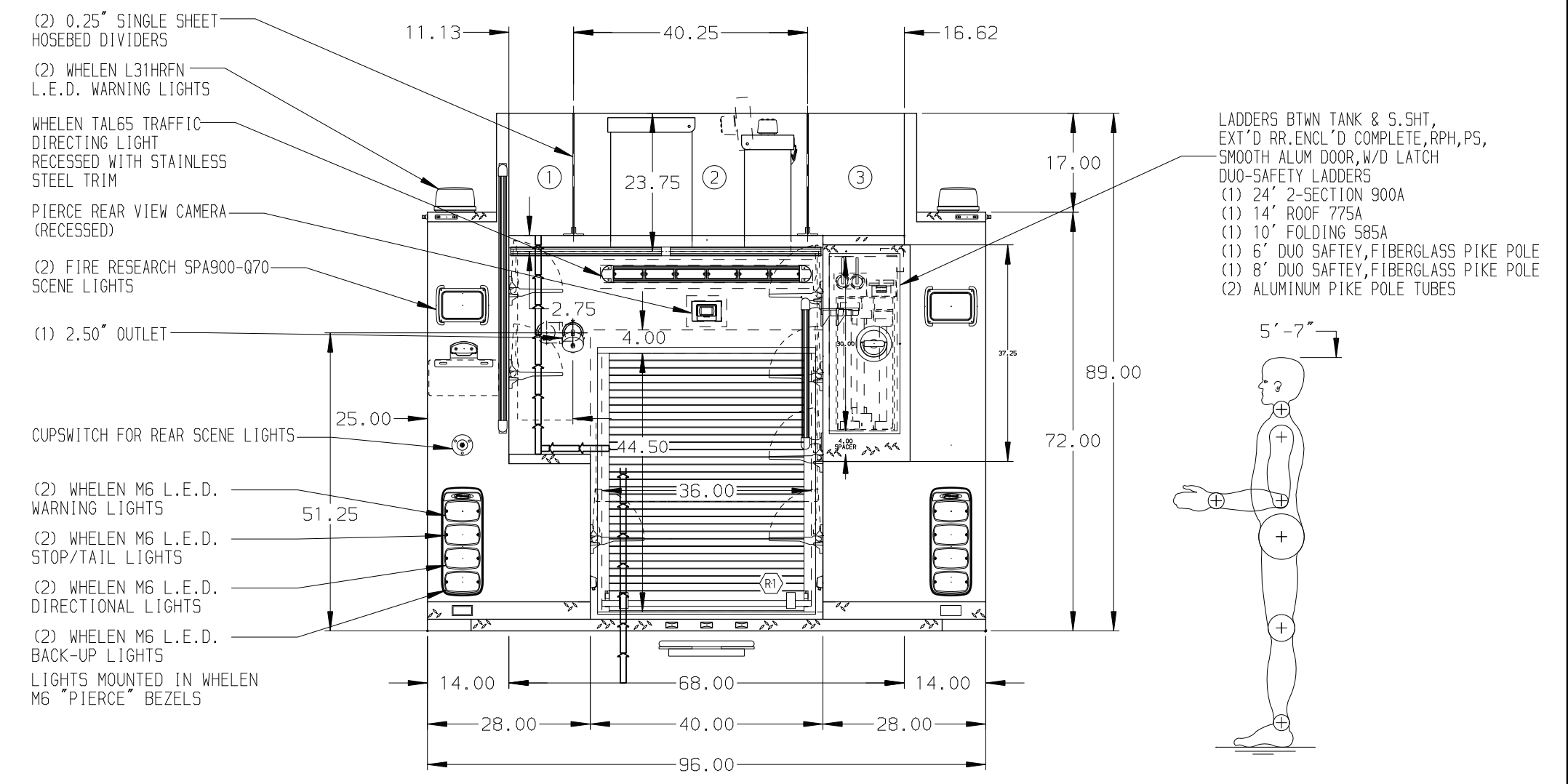
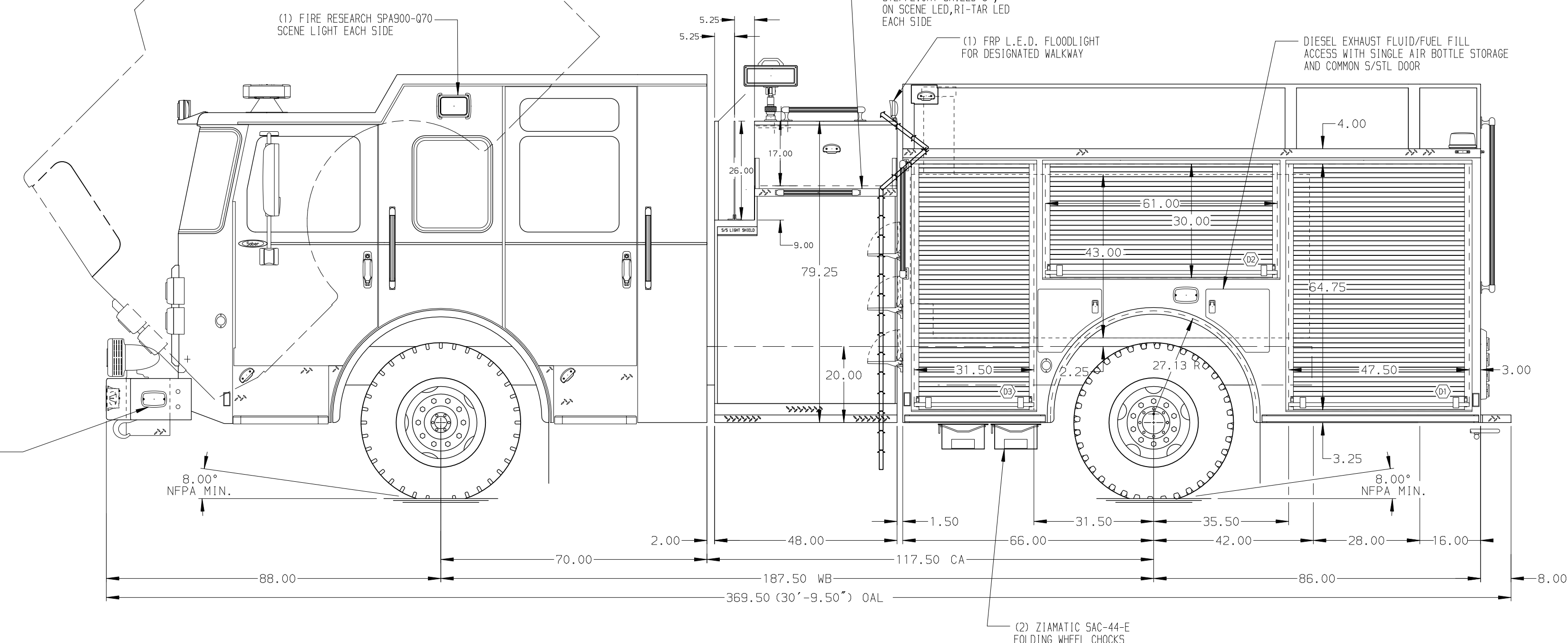


- HOSEBED CAPACITIES
- ① 300' OF 3.00" HOSE
 - ② 1200' OF 5.00" HOSE
 - ③ 800' OF 3.00" HOSE



ALUMINUM BODY

NOTE
DIMENSIONS SHOWN ARE APPROXIMATE AND ARE SUBJECT TO MINOR DEVIATIONS AS MAY OCCUR OR BE NECESSARY IN CONSTRUCTION. MINOR DETAILS NOT SHOWN.

| | | | |
|--|---------|------------|---------|
| | | JOB NO. | 31428 |
| | | SCALE | 1:24 |
| TITLE 1250-D-780P 750 GAL OF WATER W/ 30 GAL FOAM CELL 152" FH FDLER, (2) X-LAYS, LDERS. BTWN. TANK & S. SHEET | | DATE | 28JUL17 |
| | | DRAWN BY | LST |
| FOR PENSACOLA FIRE DEPARTMENT PENSACOLA, FLORIDA | | CHECKED BY | KBO |
| | | SHEET NO. | 1 OF 1 |
| DWG NO. | 31428AD | | |

| | | | |
|---------|------|-----|--------------|
| 16OCT17 | JLA | DDR | CHASSIS DATA |
| 22SEP17 | JLA | DDR | MAKE |
| 19SEP17 | JLA | DDR | PIERCE |
| 09AUG17 | LST | KBO | MODEL |
| REV | DATE | BY | CH |