

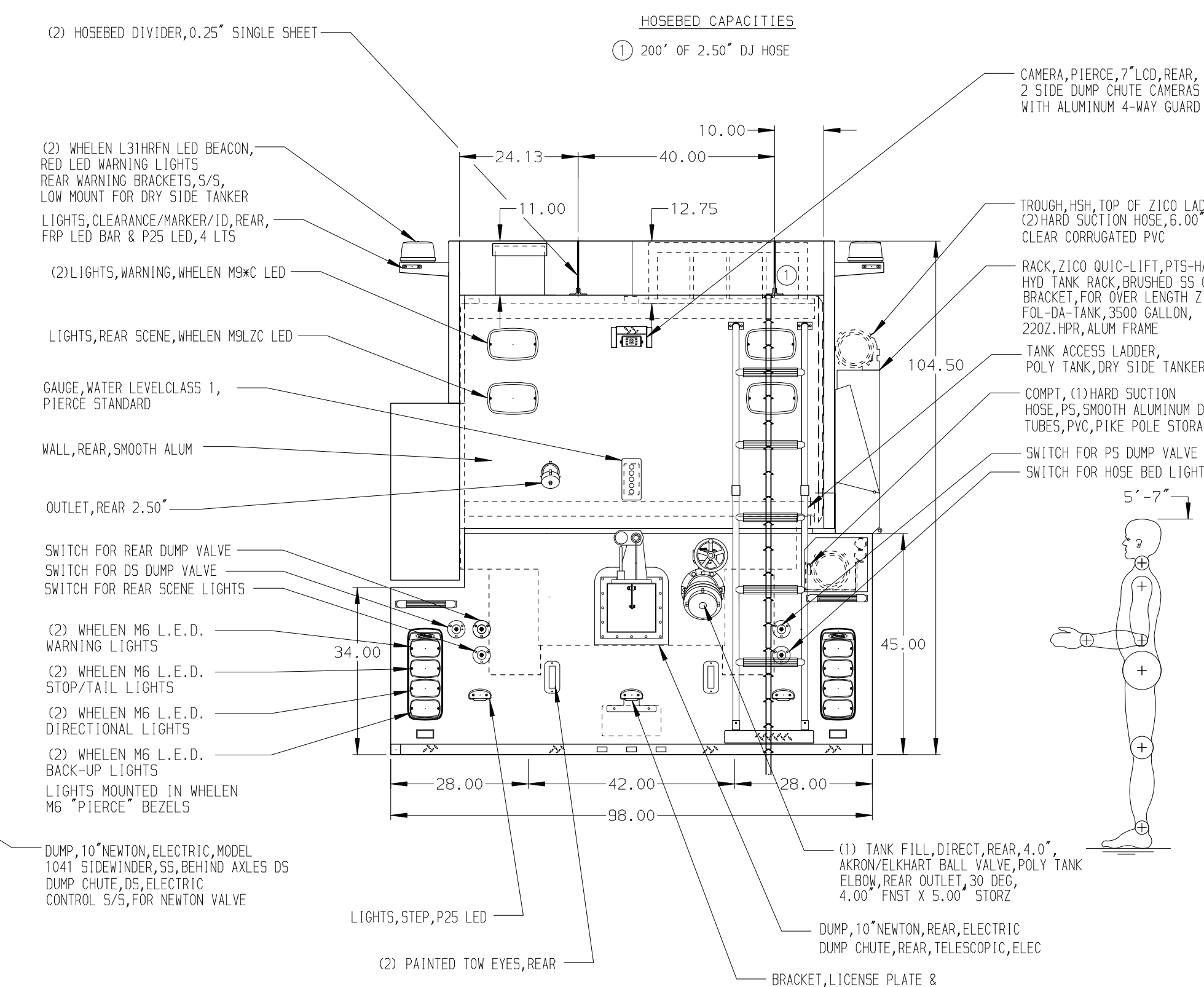
ALUMINUM BODY

FUEL TANK, 50 GAL, LH, POLISHED ALUMINUM
DEF TANK, 3, 0 GALLON, LH, KW/PETE
STEP PACKAGE, STANDARD
PETERBILT 2-DR, NFPA COMPLIANT
W/TREADPLATE VALANCE PANEL

WHELEN WIONS** SPLIT
WARNING LIGHT, UNDER DS & P2

WHEEL CHOCKS, SAC-44-E, FOLDING
MOUNTING BRKTS, CHOCKS, SAC-44-E,
FOLDING, HORIZONTAL

NOTE
DIMENSIONS SHOWN ARE APPROXIMATE
AND ARE SUBJECT TO MINOR DEVIATIONS
AS MAY OCCUR OR BE NECESSARY IN
CONSTRUCTION.
MINOR DETAILS NOT SHOWN.



Pierce MANUFACTURING INC.
BRADENTON, FLORIDA

JOB NO. 31496			
SCALE 1:24		DATE	
DRAWN BY JAF		08JUN17	
CHECKED BY RWI		12JUN17	
SHEET SIZE D		SHEET NO. 1 OF 1	

REV	DATE	BY	CH	367
160CT17	JAF	NAS	MAKE	
31AUG17	JLA	NAS	PETE	
23JUN17	RWI	JAF	MODEL	

TITLE 1500-D-3000 POLY, 182" HIGH SIDE DRY SIDE BODY W/DUMPS
45" SIDE CONTROL, (1) 1.5" & (1) 2.50" CROSSLAY
FOR CHESTER FIRE DISTRICT
CHESTER, NEW YORK
DWG NO. 31496AD