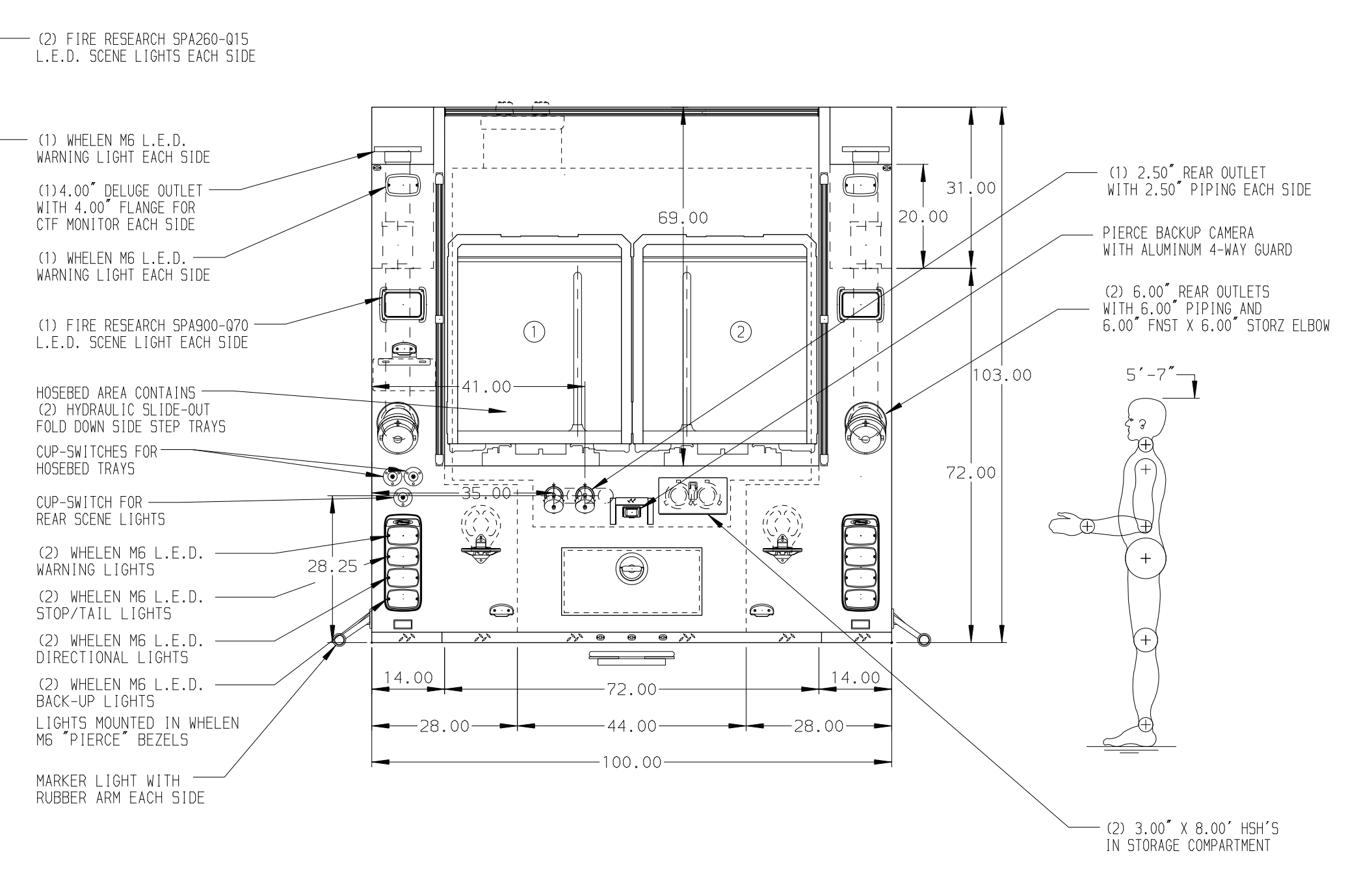


HOSEBED CAPACITIES
 ① TRAY WILL HOLD 350' OF 3.00" HOSE & 500' OF 7.25" HOSE
 ② TRAY WILL HOLD 350' OF 3.00" HOSE & 500' OF 7.25" HOSE



ALUMINUM BODY

MAXIMUM O.A.L. 458.50"

MAXIMUM O.A.H. 150"

NOTE
 DIMENSIONS SHOWN ARE APPROXIMATE AND ARE SUBJECT TO MINOR DEVIATIONS AS MAY OCCUR OR BE NECESSARY IN CONSTRUCTION. MINOR DETAILS NOT SHOWN.

- AIR INLET/OUTLET WITH DISCONNECT FITTING LOCATED ON DS PUMP PANEL
- BATTERY CHARGER LOCATED IN COMPARTMENT D3
- DRIP PAN GUARD FOR ROLL-UP DOOR LOCATED D1, D2, D3, P1, P2 & P3
- ONE ADJUSTABLE FULL WIDTH/DEPTH SHELF IN COMPARTMENT D1, D3, P2 & P3, TWO IN P1
- ONE FLOOR MOUNTED SLIDE-OUT TRAY IN COMPARTMENT D1, D3, P1 & P3
- ONE SWING-OUT ALUMINUM TOOL BOARD IN COMPARTMENT D2
- SAFE FLEET DRIVER'S SIDE & PASSENGER'S SIDE CAMERA MOUNTED ON UPPER FORWARD CORNER OF PUMP PANEL

REV	DATE	BY	CH	VELOCITY
1	15NOV17	JWO	CHR	CHASSIS DATA
2	15NOV17	AMI	CHR	MAKE
3	19OCT17	AMI	CHR	PIERCE
4	14AUG17	AMI	SMA	MODEL

TITLE	3000-D-1000 1000 GALLON FOAM UNIT, 171" PUMPER BODY 8.00" DELUGE, (2) 4.00" REAR DELUGE'S, (4) REAR OUTLETS
FOR	MARATHON - GARYVILLE REFINERY GARYVILLE, LOUISIANA
DWG NO.	31553AD

JOB NO.	31553
SCALE	1:24
DATE	
DRAWN BY	AMI
CHECKED BY	SMA
SHEET SIZE	SHEET NO.
D	1 OF 1