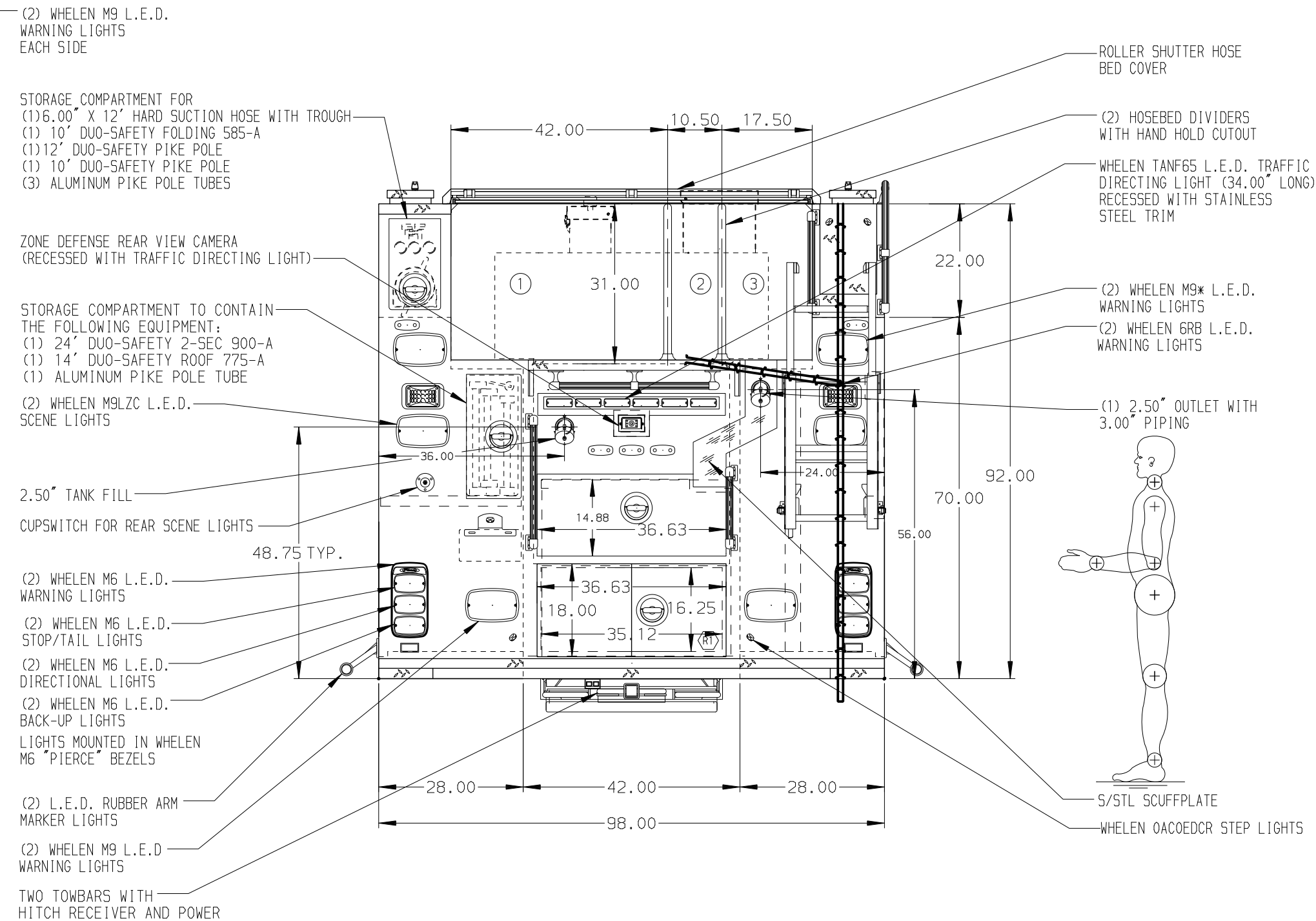
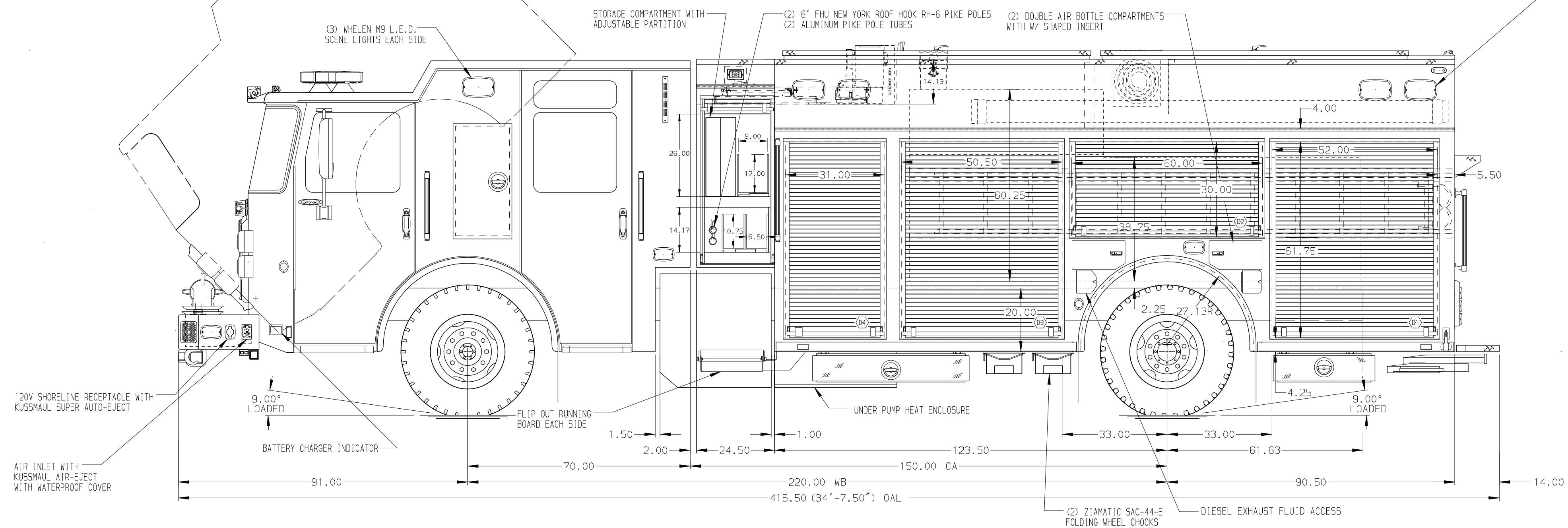


- HOSEBED CAPACITIES
- ① 1100' OF 5.00" HOSE
 - ② 250' OF 2.50" HOSE
 - ③ 500' OF 3.00" HOSE



ALUMINUM BODY

NOTE

DIMENSIONS SHOWN ARE APPROXIMATE AND ARE SUBJECT TO MINOR DEVIATIONS AS MAY OCCUR OR BE NECESSARY IN CONSTRUCTION. MINOR DETAILS NOT SHOWN.

- BATTERY CHARGER LOCATED BEHIND DRIVER'S SEAT
- 5/STL SCUFFPLATE RUNNING FROM JUST BELOW HOSEBED # 3 TO THE NOTCH ABOVE THE REAR COMPARTMENT
- 5/STL SCUFFPLATE AROUND DEF FILL OPENING
- 5/STL SCUFFPLATE AROUND FUEL FILL OPENING
- 5/STL SCUFFPLATE AROUND AIR BOTTLE COMPARTMENT OPENINGS
- FULL WIDTH/DEPTH ADJUSTABLE SHELVES TWO IN D3, P1, AND P3 AND ONE IN D1 AND D2
- ONE ADJUSTABLE SLIDE-OUT TRAY IN D1
- ONE ADJUSTABLE TILTING SLIDE-OUT TRAY IN P4
- ONE FLOOR MOUNTED SLIDE-OUT TRAY IN P4
- SLIDE-OUT TOOL BOARD WITH PEGBOARD PATTERN AND BRUSHED FINISH IN D1

- TWO SWING-OUT ALUMINUM TOOL BOARDS IN P2
- ONE 200" OIL DRY HOPPER IN HATCH COMPARTMENT ABOVE P4
- ALUMINUM PEGBOARD WITH TRACKS ON THE REAR WALL OF P2
- LITTLE GIANT DEFENDER MODEL 17 IN COMPARTMENT
- (2) ADDITIONAL POLY TRAYS SHIPPED LOOSE
- FULL WIDTH/DEPTH ADJUSTABLE SHELVES TWO IN THE DRIVER'S SIDE EMS COMPARTMENT
- ONE VERTICAL DIVIDER IN THE DRIVER'S SIDE EMS COMPARTMENT
- ONE FLOOR MOUNTED SLIDE-OUT TRAY WITH SIDE SLIDES IN R1
- TWO VERTICAL DIVIDERS IN P1
- ONE VERTICAL PARTITION WITH PEGBOARD IN D3

- ONE 120 V 6-PLACE RECEPTACLE STRIP BEHIND THE DRIVER'S SEAT AND OFFICER'S SEAT
- ONE 120 V NEMA DUPLEX RECEPTACLE IN D1, D2, D3, D4, R1, P1, P2, P3, AND P4

				CHASSIS DATA
				MAKE
				PIERCE
				MODEL
08DEC17	LST	JJR		ENFORCER
REV	DATE	BY	CH	

		JOB NO.	31603
		SCALE	DATE
		1:24	
TITLE		DRAWN BY	19SEP17
FOR		CHECKED BY	21SEP17
DWG NO.		SHEET SIZE	SHEET NO.
		D	1 OF 1