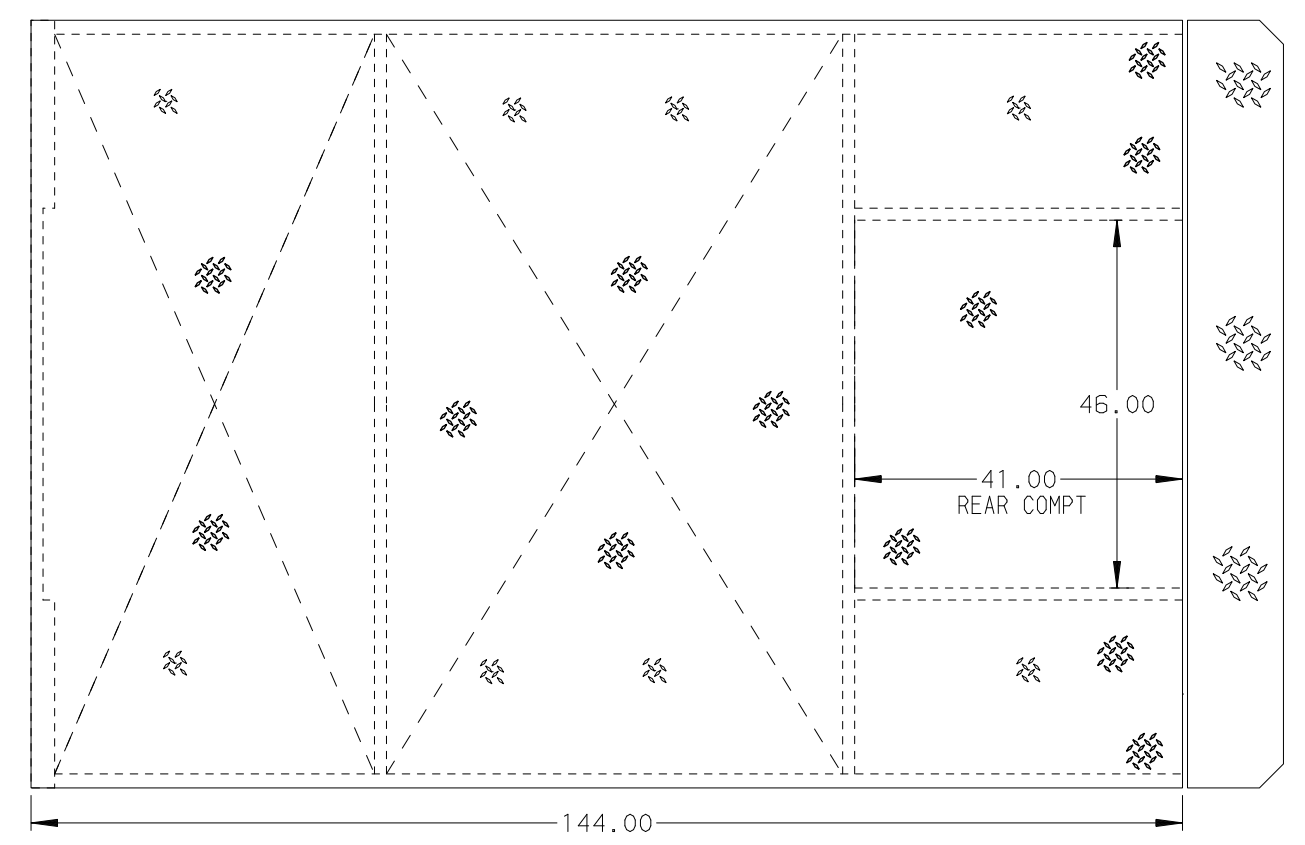
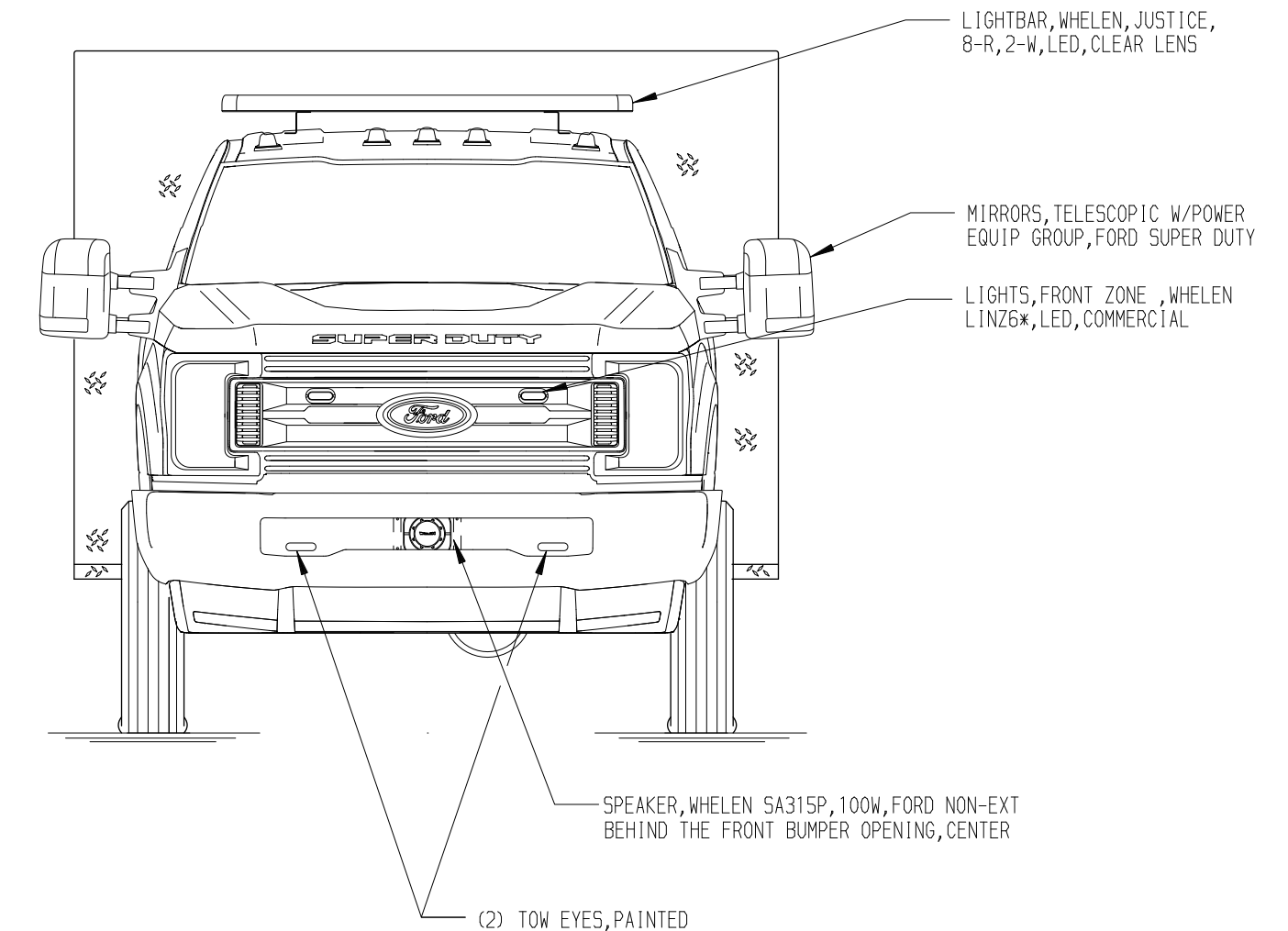
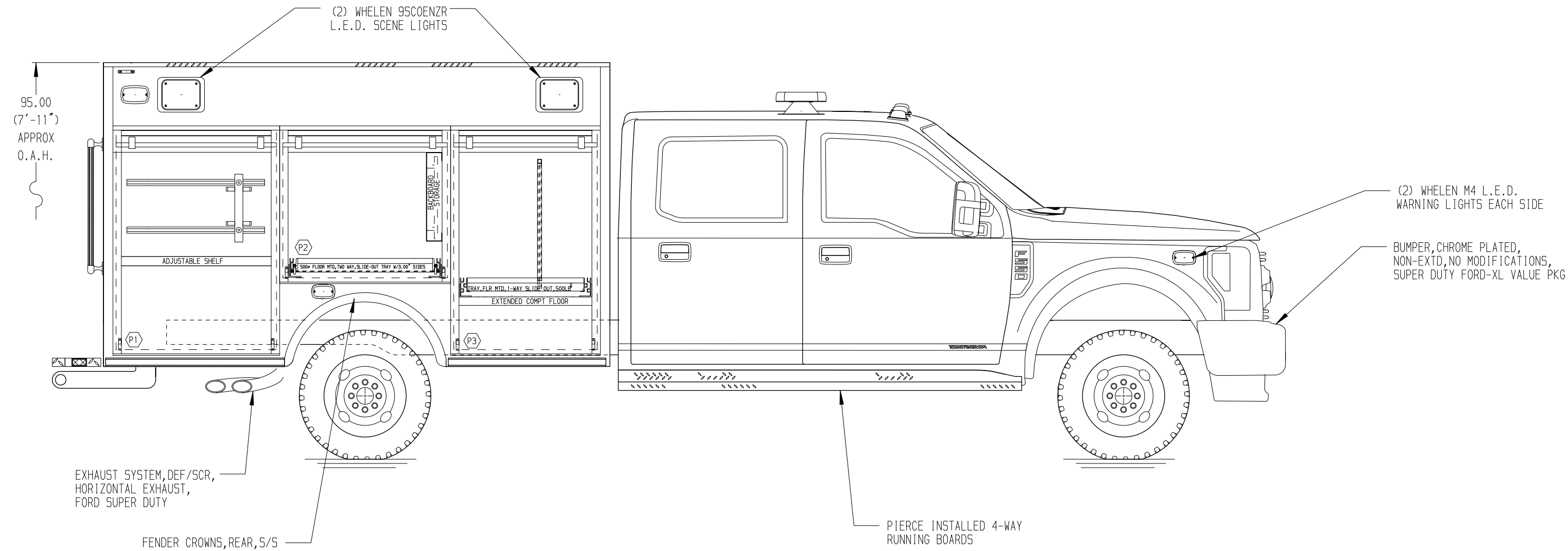


PASSENGER'S SIDE COMPARTMENTS CONTAIN THE FOLLOWING:

COMPARTMENT P1 CONTAINS:
 - (1) SHELF, ADJUSTABLE, 500LB CAP., STD DEPTH COMPT
 - AIR BOTTLE HOLDER WITH TRACKS

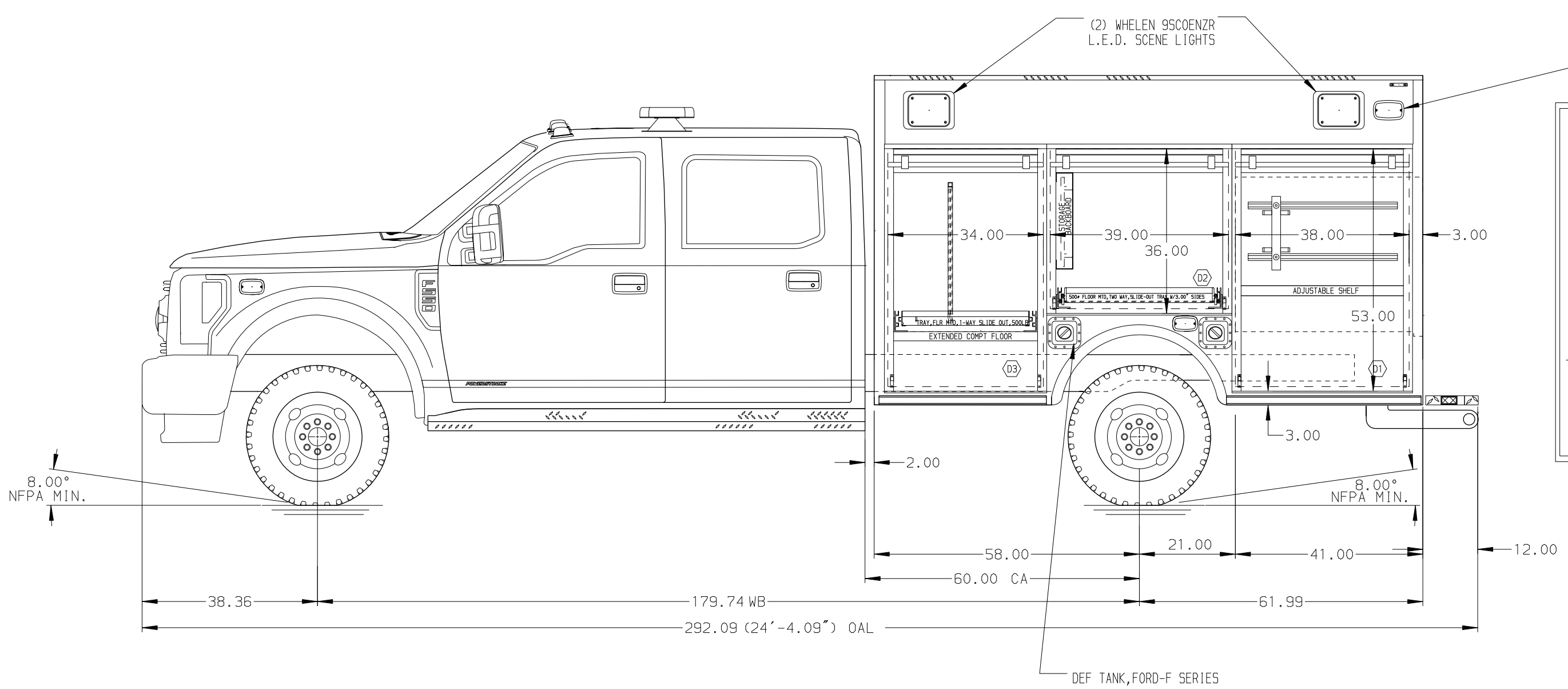
COMPARTMENT P2 CONTAINS:
 - (1) TRAY, FLOOR MOUNTED, UTILITY, TWO WAY SLIDE OUT, 500LB, 3" SIDES, FULL TRANS
 - (1) BACKBOARD STORAGE RACK FOR: 74" L x 19" W x 2.25" D BACKBOARDS

COMPARTMENT P3 CONTAINS:
 - (1) EXTENDED COMPARTMENT FLOOR BOLT IN STYLE
 - (1) TRAY FLOOR MOUNTED SLIDE OUT, 500 LB
 - (1) TOOLBOARD, ADDED TO SLIDE-OUT TRAY, 1/2 DEPTH, TRANSVERSE/STD, TRAY



REAR COMPARTMENT R1 CONTAINS THE FOLLOWING:

COMPARTMENT R1 CONTAINS:
 - (1) SHELF, ADJUSTABLE, 500LB CAP., STD DEPTH COMPT

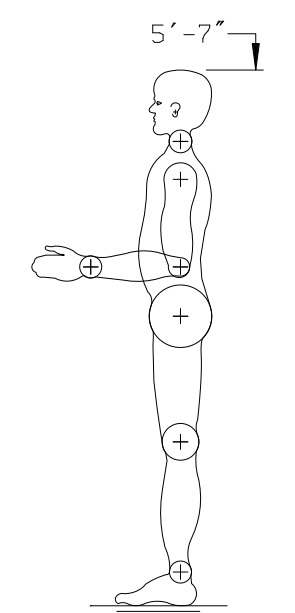
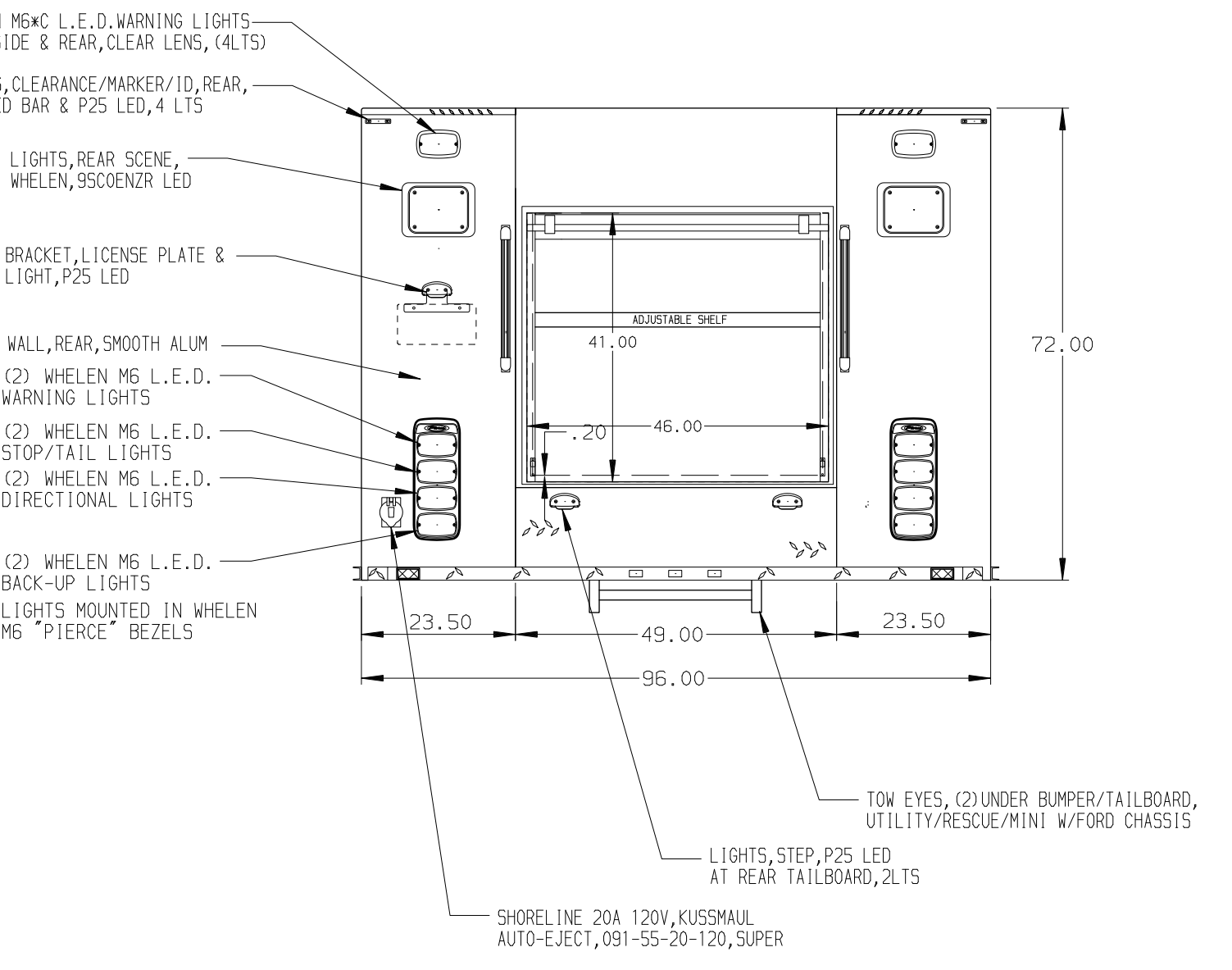


DRIVER'S SIDE COMPARTMENTS CONTAIN THE FOLLOWING:

COMPARTMENT D1 CONTAINS:
 - (1) SHELF, ADJUSTABLE, 500LB CAP., STD DEPTH COMPT
 - AIR BOTTLE HOLDER WITH TRACKS

COMPARTMENT D2 CONTAINS:
 - (1) TRAY, FLOOR MOUNTED, UTILITY, TWO WAY SLIDE-OUT, 500LB, 3" SIDES, FULL TRANS

COMPARTMENT D3 CONTAINS:
 - (1) TOOLBOARD, ADDED TO SLIDE-OUT TRAY, 1/2 DEPTH, TRANSVERSE/STD, TRAY
 - (1) TRAY FLOOR MOUNTED SLIDE OUT, 500 LB
 - (1) EXTENDED COMPARTMENT FLOOR BOLT IN STYLE



ALUMINUM BODY

NOTE
 DIMENSIONS SHOWN ARE APPROXIMATE AND ARE SUBJECT TO MINOR DEVIATIONS AS MAY OCCUR OR BE NECESSARY IN CONSTRUCTION. MINOR DETAILS NOT SHOWN.

		JOB NO.	31659
		DATE	SCALE 1:24
MANUFACTURING INC. BRADENTON, FLORIDA		13JUL17	DRAWN BY JAF
		19JUL17	CHK'D BY RWI
TITLE 10' RESCUE, NON-WALK IN		SHEET NO.	SHEET SIZE
FOR LAS CRUCES FIRE DEPARTMENT LAS CRUCES, NEW MEXICO		1 OF 1	D
CHASSIS DATA CHASSIS FORD MODEL F-550 4X2		DRWG. NO. 31659AD	

REV.	DATE	BY	CHK'D
02JAN18	JAF	GSC	
13OCT17	JAF	GSC	
17AUG17	RW1	JAF	