

SURFACE DESIGNATION AND PATHWAY MARKINGS

- HOSEBED CAPACITIES
- ① 250' OF 2.50" D.J. POLY HOSE
  - ② 900' OF 5.00" D.J. POLY HOSE
  - ③ 250' OF 2.50" D.J. POLY HOSE

4-WAY ALUMINUM HOSEBED COVER

(2) HOSEBED DIVIDERS

(1) WHELEN M9J L.E.D. WARNING LIGHT EACH SIDE

(1) COMPARTMENT FOR 6.00" x 10" HARD SUCTION HOSE EACH SIDE

(2) WHELEN M9J L.E.D. WARNING LIGHTS (P.S. RECESSED)

PIERCE REAR VIEW CAMERA

(2) WHELEN PIONEER PF51 L.E.D. RECESSED LIGHTS (P.S. IN SAME RECESS AS M9 LIGHT)

CUPSWITCH FOR HOSEBED LIGHTING

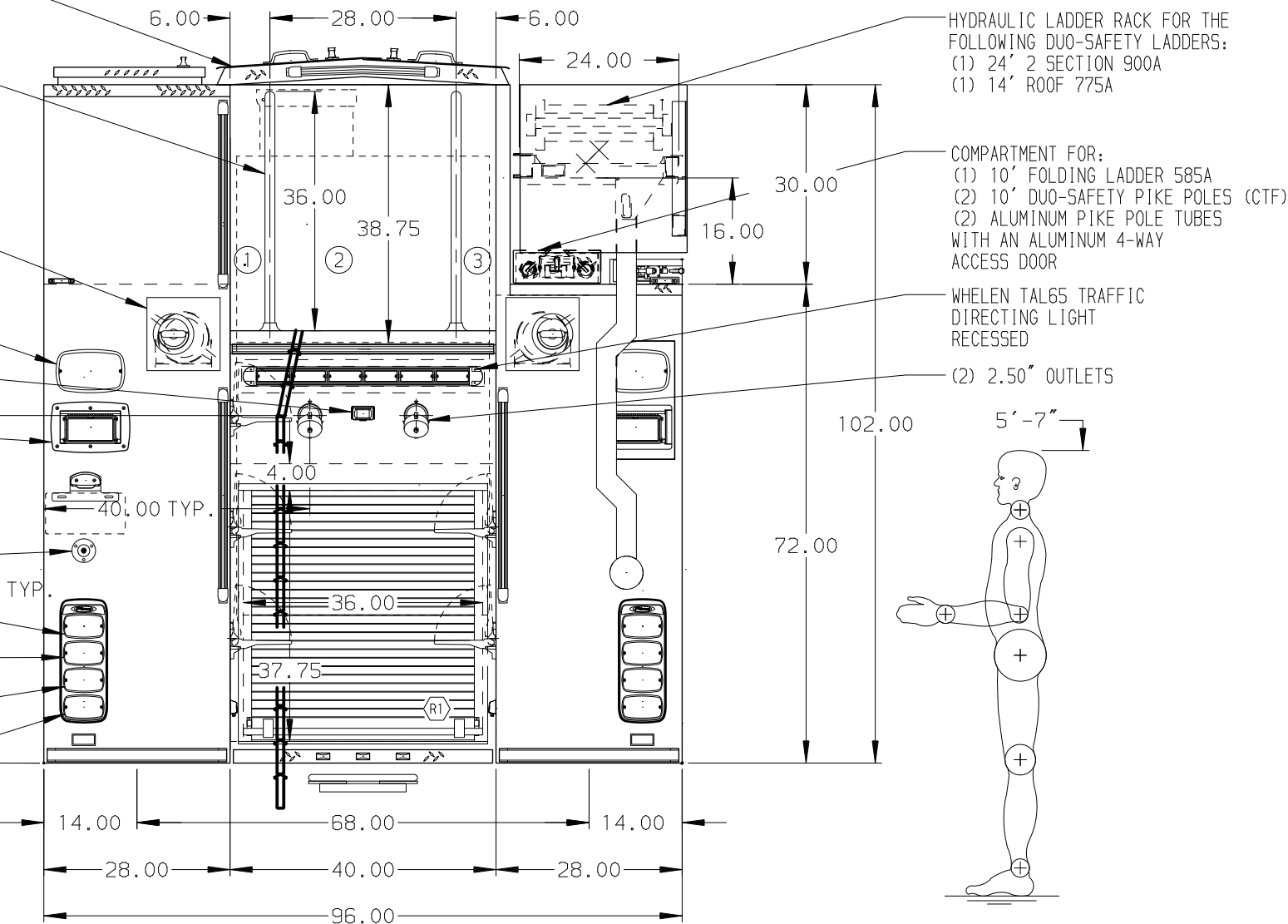
(2) WHELEN M6 L.E.D. WARNING LIGHTS

(2) WHELEN M6 L.E.D. STOP/TAIL LIGHTS

(2) WHELEN M6 L.E.D. DIRECTIONAL LIGHTS

(2) WHELEN M6 L.E.D. BACK-UP LIGHTS

LIGHTS MOUNTED IN WHELEN M6 "PIERCE" BEZELS



## STAINLESS STEEL BODY

**NOTE**

DIMENSIONS SHOWN ARE APPROXIMATE AND ARE SUBJECT TO MINOR DEVIATIONS AS MAY OCCUR OR BE NECESSARY IN CONSTRUCTION. MINOR DETAILS NOT SHOWN.

1. BATTERY CHARGER LOCATED IN D3
2. BATTERY CHARGER INDICATOR LOCATED ON DRIVER'S SEAT RISER
3. DUAL L.E.D. LIGHT STRIPS LOCATED IN HOSE BED
4. ADJUSTABLE FULL WIDTH/ DEPTH SHELVES TWO IN D1,D3, AND P1 AND ONE IN R1 AND P3
5. ONE ADJUSTABLE TILTING SLIDE-OUT TRAY IN D2 AND P2
6. ONE FLOOR MOUNTED SLIDE-OUT TRAY IN R1, P1, AND P3
7. SLIDE-OUT TOOLBOARD WITH PAC TRAC MOUNTING TRACKS IN D3
8. PAC TRAC ON THE REAR FACING WALL OF THE VERTICAL PARTITION IN D3 AND ON THE RIGHT SIDE COMPARTMENT WALL OF D3
9. ONE VERTICAL PARTITION IN D3
10. HOT WATER HEATER IN PUMP COMPARTMENT

11. ONE HANNAY ELECTRIC REWIND AIR REEL MODEL 1514-17-18 WITH 150' OF 3/8" I.D. HOSE IN HATCH COMPARTMENT ABOVE D3
12. ONE 120V NEMA DUPLEX RECEPTACLE IN EACH EMS COMPARTMENT

REV	DATE	BY	CH	ENFORCER
06DEC17	LST	MSA	MAKE	PIERCE
10NOV17	LST	MSA	PIERCE	PIERCE
22SEP17	JWO	CDU	MODEL	PIERCE

		JOB NO.	31699
MANUFACTURING INC.		SCALE	1:24
		DATE	
TITLE		DRAWN BY	LST
2000-D-1000 GAL POLY, 171" RESCUE BODY (2) X-LAYS, (1) SPEEDLAY, DELUGE, HYD. LADDER RACK		CHECKED BY	CDU
FOR		SHEET NO.	1 OF 1
HUMBOLDT FIRE DEPARTMENT HUMBOLDT, IOWA		SHEET SIZE	D
DWG NO.			

31699AD