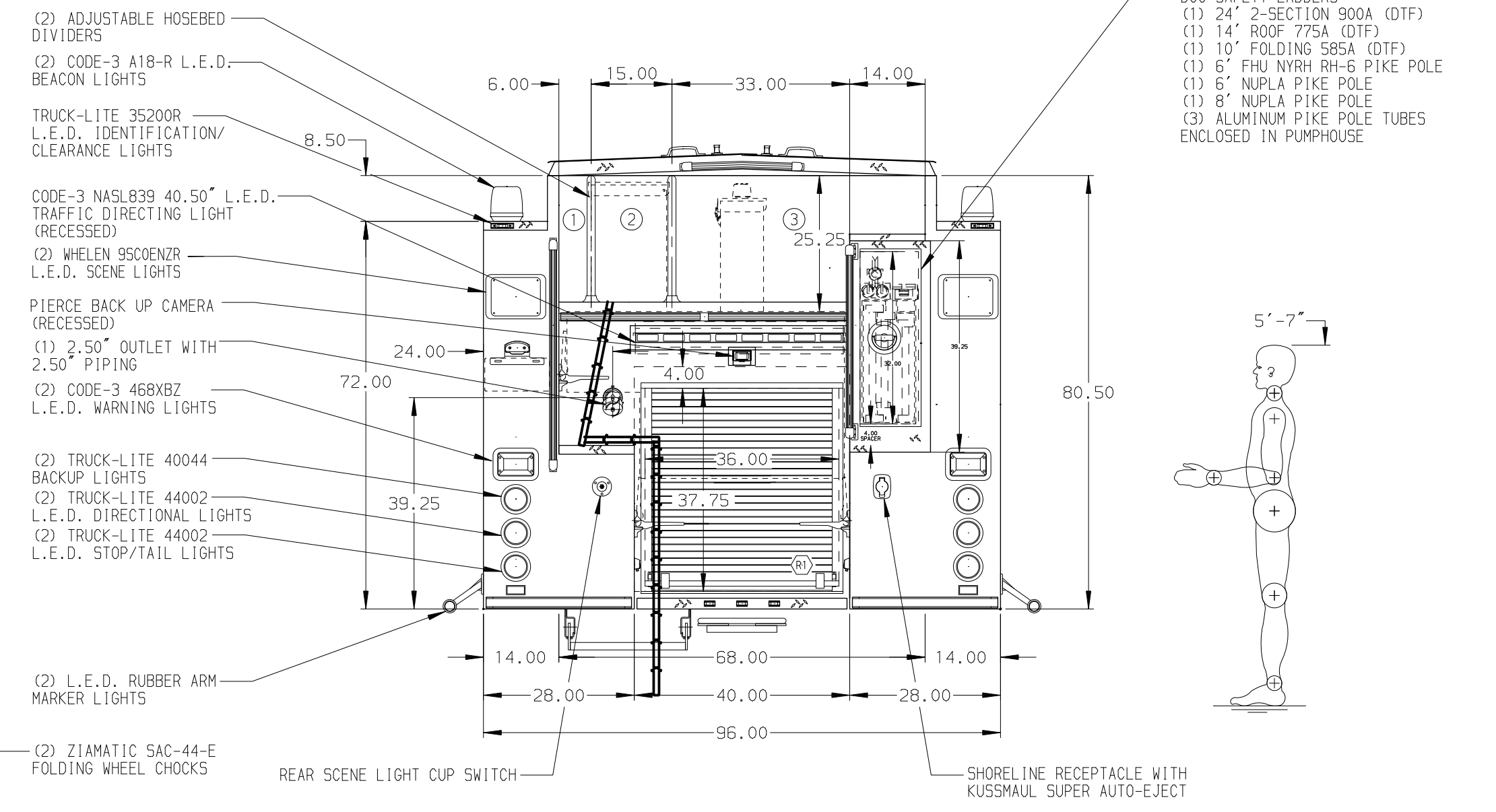
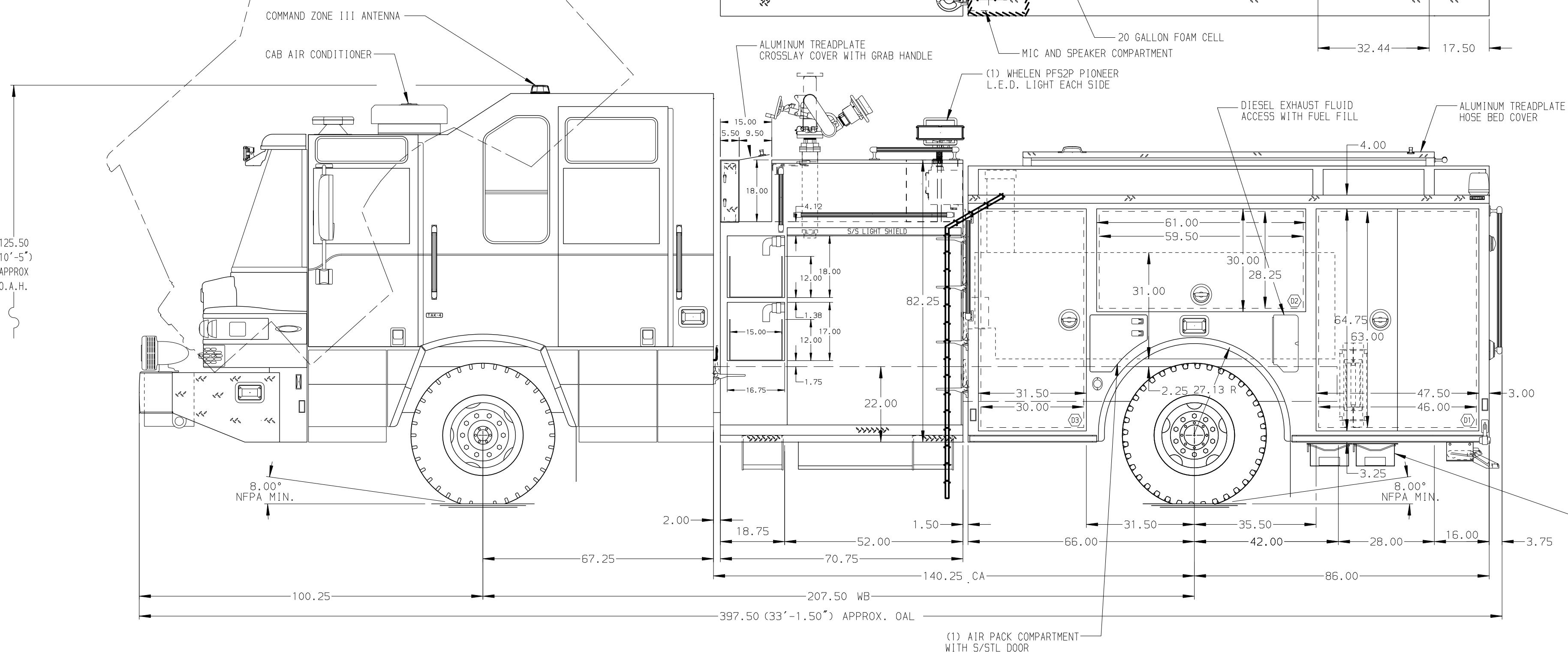


- HOSEBED CAPACITIES
- ① 250' OF 2.50" SINGLE STACK D.J. POLY HOSE
 - ② 600' OF 2.50" D.J. POLY HOSE
 - ③ 1000' OF 5.00" D.J. POLY HOSE



ALUMINUM BODY

NOTE
DIMENSIONS SHOWN ARE APPROXIMATE AND ARE SUBJECT TO MINOR DEVIATIONS AS MAY OCCUR OR BE NECESSARY IN CONSTRUCTION. MINOR DETAILS NOT SHOWN.

1. AIR INLET WITH DISCONNECT COUPLING LOCATED ON DRIVER'S SIDE SEAT RISER
2. MOUNTING BASE FOR ANTENNA LOCATED PER SHOP ORDER
3. BATTERY CHARGER LOCATED IN COMPARTMENT D3
4. BATTERY CHARGER INDICATOR LOCATED ON DRIVER'S SIDE SEAT RISER
5. HORIZONTAL EQUIPMENT MOUNTING TRACKS IN COMPARTMENT D1 & D3
6. PULL STRAP FOR DOOR IN COMPARTMENT D2 & P2
7. HOT WATER HEATER IN PUMP COMPARTMENT
8. ONE FULL WIDTH/DEPTH ADJUSTABLE PAINTED SHELF IN COMPARTMENT D3, P1 & P2; TWO IN D1 & P3
9. ONE 120V 6-PLACE RECEPTACLE STRIP LOCATED IN CAB EMS COMPARTMENT, BEHIND OFFICER'S SEAT & COMPARTMENT P3

10. GEAR GRID SINGLE SWING OUT TOOL GRID SYSTEM LOCATED IN COMPARTMENT D2
11. LITTLE GIANT MODEL 10102- MODEL17 LADDER (DTF) TO BE LOCATED IN TRANSVERSE BETWEEN COMPARTMENT D1 & P1 NOT EXTENDING INTO COMPARTMENT D1

10MAY18	LST	JJR	PIERCE	CHASSIS DATA
030CT17	LST	JBL	PIERCE	MAKE
REV	DATE	BY	CH	MODEL
				QUANTUM

		JOB NO.	31702
		SCALE	1:24
Pierce MANUFACTURING INC.		TITLE	1250-D-520,500 GAL WATER W/20 GAL FOAM,152" BODY FLL DPTH LWR EXTND REAR, FULL HGHT FRNT & REAR
		FOR	MADISON FIRE DEPARTMENT MADISON, WI
		CHECKED BY	LST
		DRAWN BY	JBL
DWG NO. 31702AD		SHEET SIZE	D
		SHEET NO.	1 OF 1