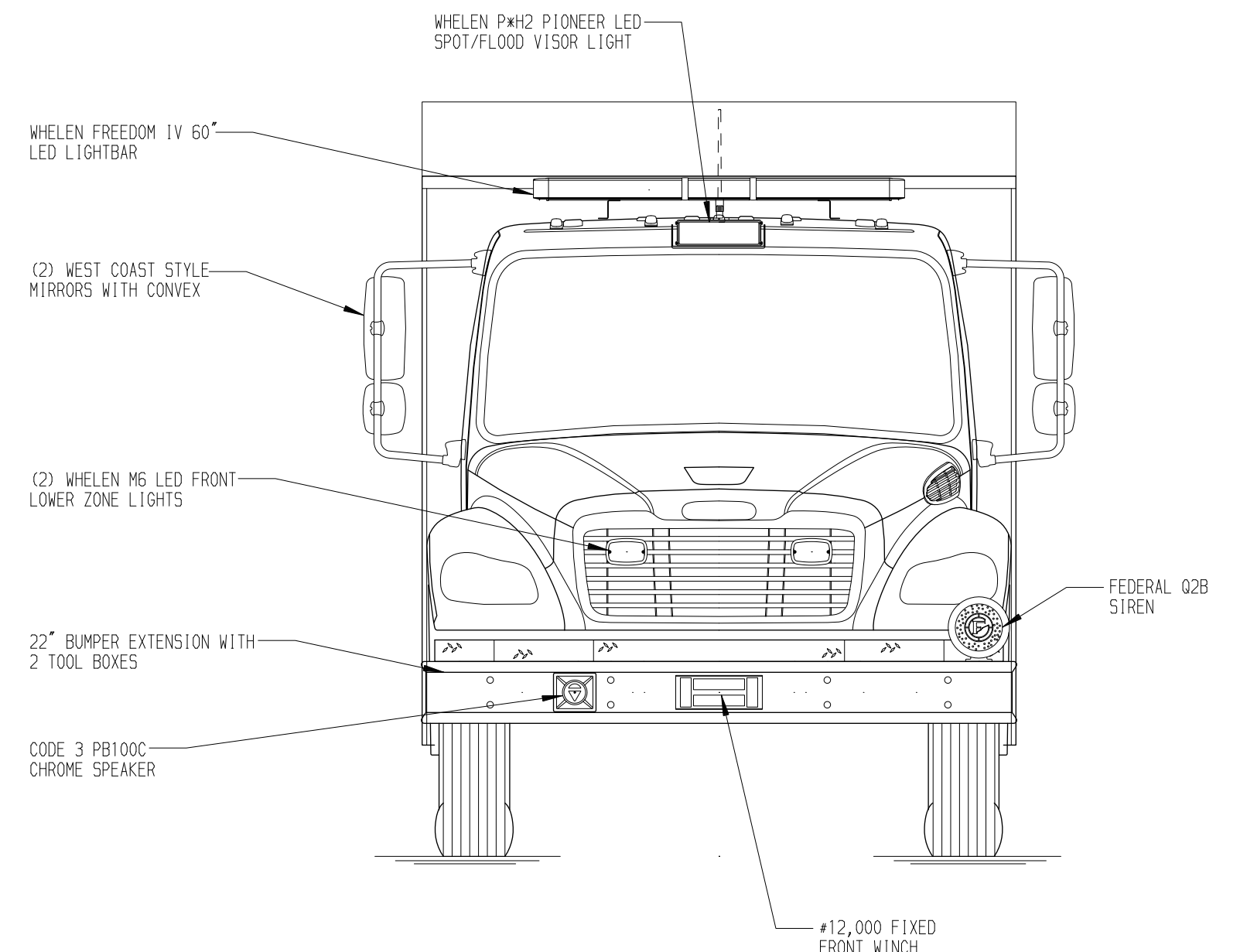
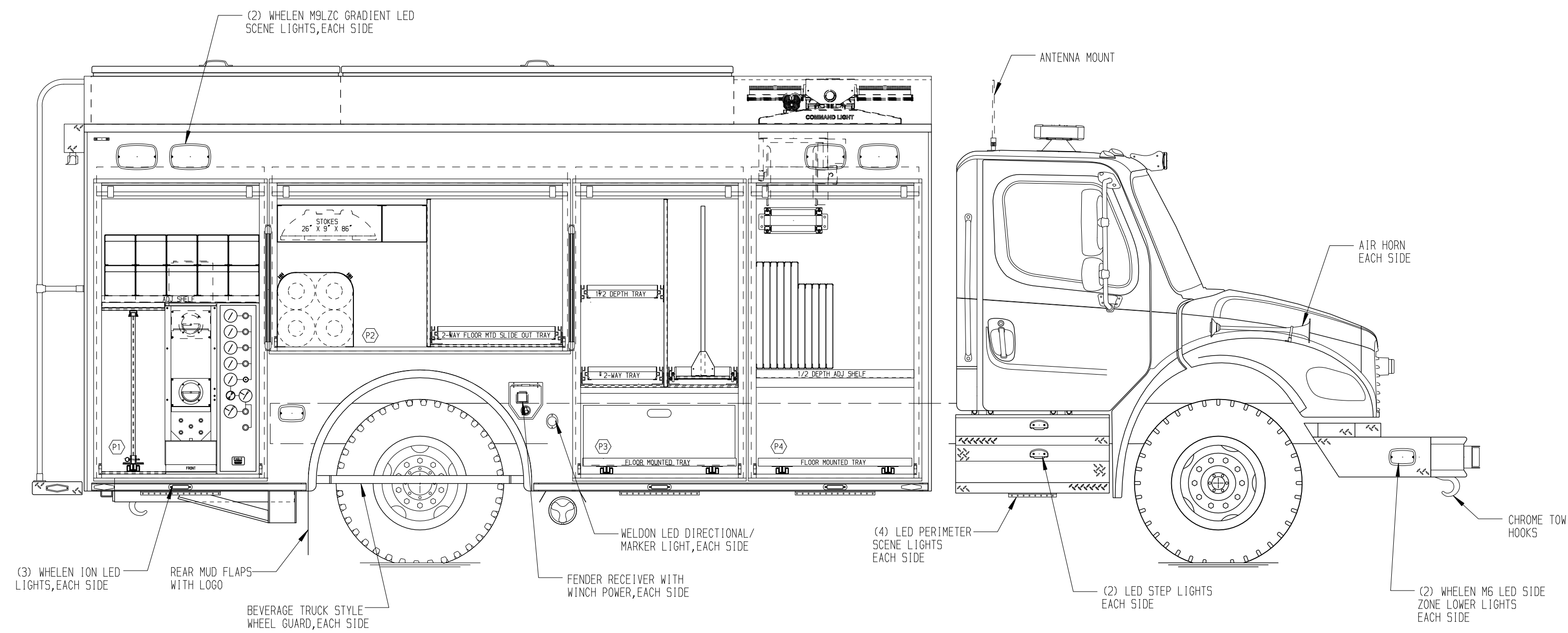


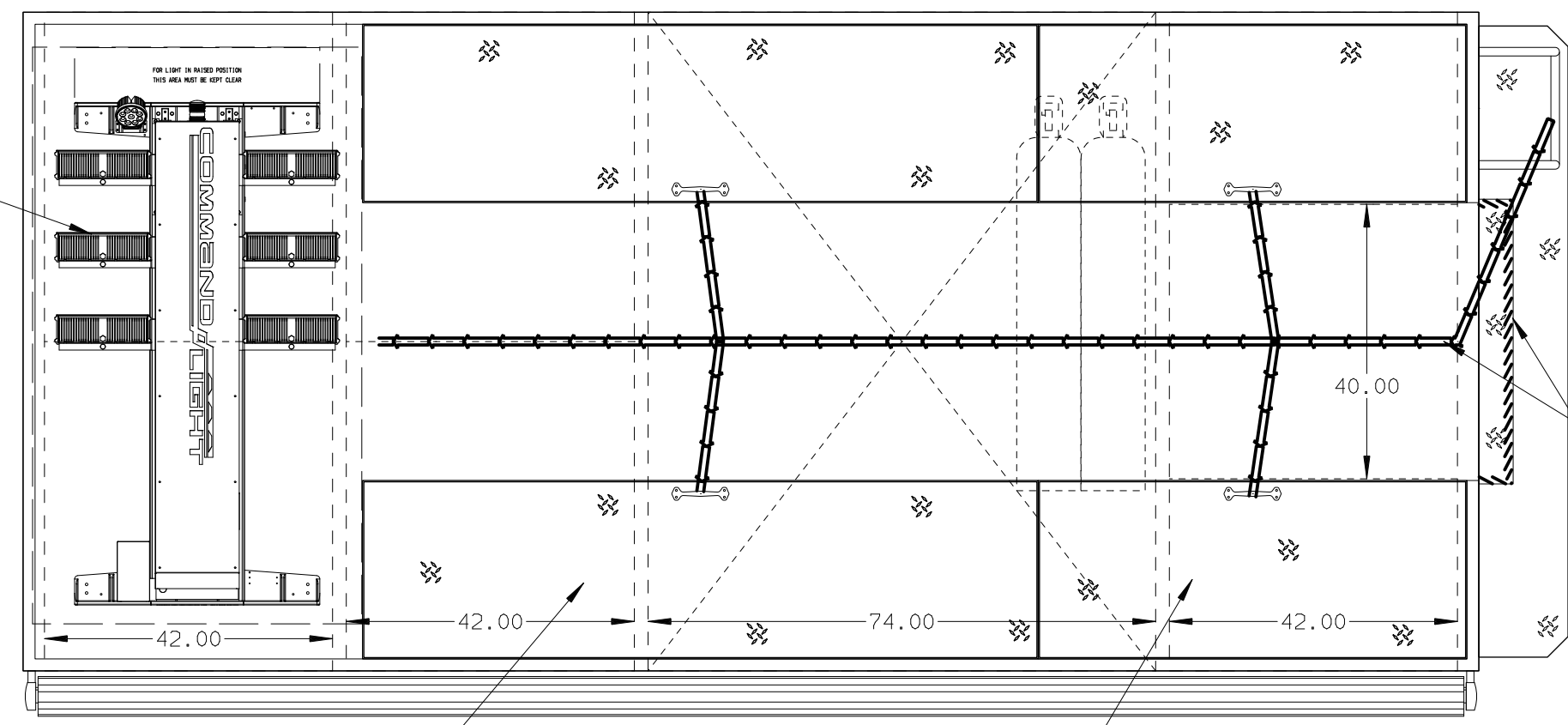
**PASSENGER'S SIDE COMPARTMENTS CONTAIN THE FOLLOWING:**

- COMPARTMENT P1 CONTAINS:  
 - (1) STD DEPTH SLIDE OUT TOOLBOARD  
 - (1) STD DEPTH ADJ SHELF  
 - (1) RACK FOR 10 SCBA BOTTLES  
 - (1) CASCADE SYSTEM CONTROL PANEL  
 - (1) "SPACESAVER" 2-BOTTLE FILL ENCLOSURE
- COMPARTMENT P2 CONTAINS:  
 - (1) STOKES BASKET RACK  
 - (1) 11" WIDE STORAGE RACK  
 - (1) RACK FOR 4 UN AIR STORAGE BOTTLES  
 - (1) VERTICAL PEGBOARD DIVIDER  
 - (1) 2-WAY FLOOR MOUNTED SLIDE OUT TRAY
- COMPARTMENT P3 CONTAINS:  
 - (1) POLY TOOL BOX  
 - (1) 2-WAY ADJ SLIDE OUT TOOLBOARD  
 - (1) HORIZONTAL FLOOR EXTENSION  
 - (1) FLOOR MOUNTED TRAY  
 - (1) 1/2 DEPTH ADJ SLIDE OUT TRAY  
 - (1) VERTICAL PEGBOARD DIVIDER
- COMPARTMENT P4 CONTAINS:  
 - (1) 1/2 DEPTH ADJ SHELF  
 - (1) VERTICAL REAR WALL DIVIDER  
 - (1) RACK FOR 11 AIR BAGS  
 - (1) FLOOR MOUNTED TRAY  
 - (1) ELECTRIC CORD REEL WITH 200' OF 10/3 YELLOW CORD



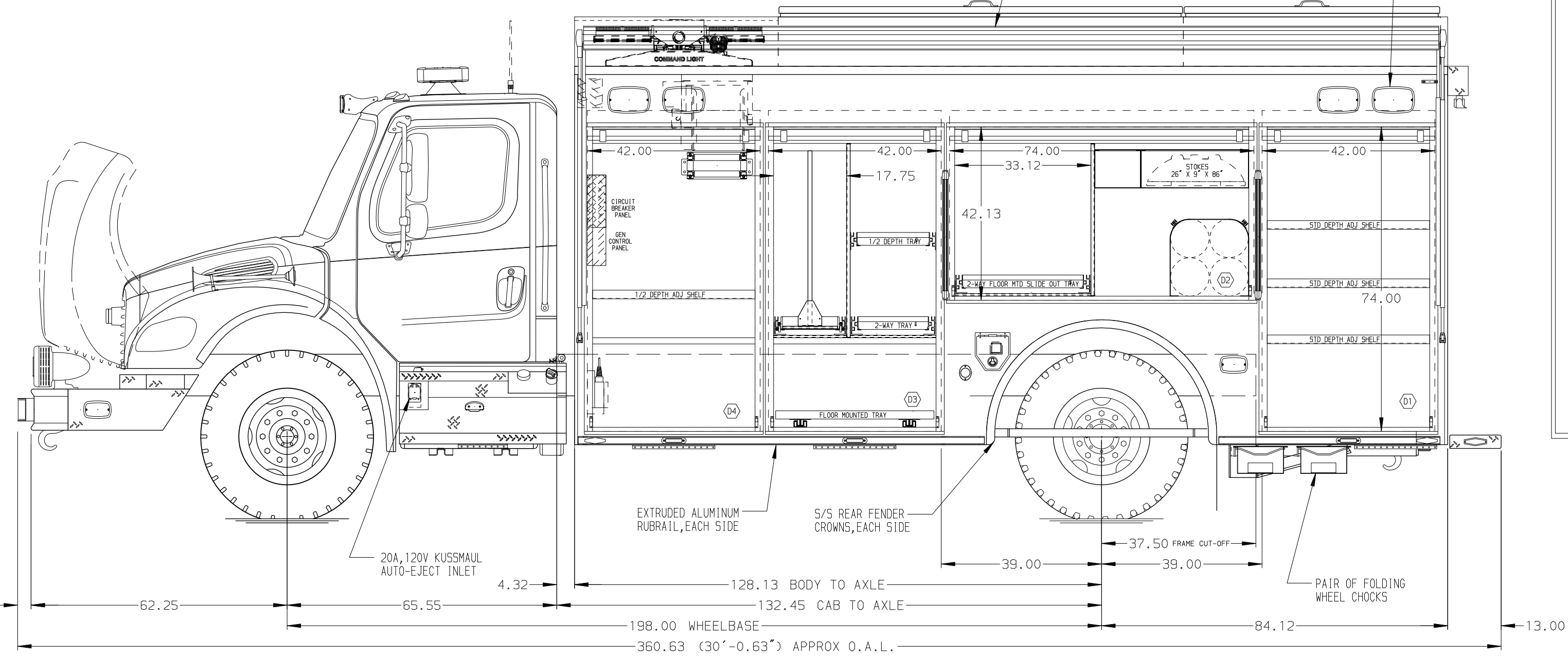
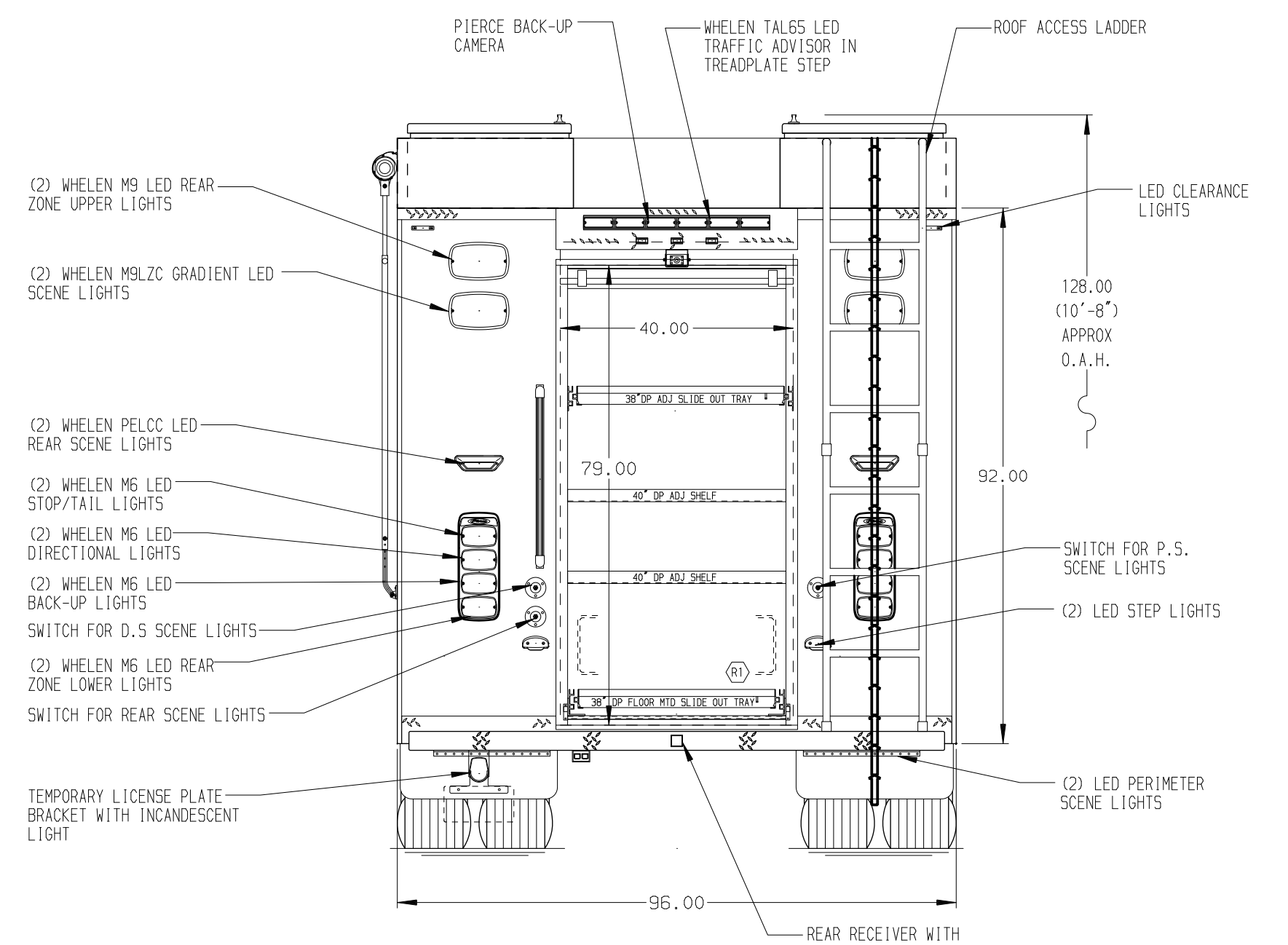
**REAR COMPARTMENT CONTAINS THE FOLLOWING:**

COMPARTMENT R1 CONTAINS:  
 - (2) 40" DP ADJ SHELVES  
 - (1) 38" DP FLOOR MOUNTED SLIDE OUT TRAY  
 - (1) 38" DP ADJ SLIDE OUT TRAY



**DRIVER'S SIDE COMPARTMENTS CONTAIN THE FOLLOWING:**

- COMPARTMENT D1 CONTAINS:  
 - (3) STD DEPTH ADJ SHELVES
- COMPARTMENT D2 CONTAINS:  
 - (1) STOKES BASKET RACK  
 - (1) 11" WIDE STORAGE RACK  
 - (1) RACK FOR 4 UN AIR STORAGE BOTTLES  
 - (1) VERTICAL PEGBOARD DIVIDER  
 - (1) 2-WAY FLOOR MOUNTED SLIDE OUT TRAY
- COMPARTMENT D3 CONTAINS:  
 - (1) 2-WAY ADJ SLIDE OUT TOOLBOARD  
 - (1) HORIZONTAL FLOOR EXTENSION  
 - (1) FLOOR MOUNTED TRAY  
 - (1) 1/2 DEPTH ADJ SLIDE OUT TRAY  
 - (1) VERTICAL PEGBOARD DIVIDER
- COMPARTMENT D4 CONTAINS:  
 - (1) KUSSMAUL PUMP PLUS 1200 CHARGER  
 - (1) 1/2 DEPTH ADJ SHELF  
 - (1) VERTICAL REAR WALL DIVIDER  
 - (1) HORIZONTAL FLOOR EXTENSION  
 - (1) CIRCUIT BREAKER PANEL  
 - (1) GENERATOR METER PANEL  
 - (1) COMMAND LIGHT CONTROLLER  
 - (1) ELECTRIC CORD REEL WITH 200' OF 10/3 YELLOW CORD



**NOTE**  
 DIMENSIONS SHOWN ARE APPROXIMATE AND ARE SUBJECT TO MINOR DEVIATIONS AS MAY OCCUR OR BE NECESSARY IN CONSTRUCTION. MINOR DETAILS NOT SHOWN.

- NOTES:**
1. ONAN 15KW PTO DRIVEN GENERATOR WITH SPLASH GUARD LOCATED BETWEEN FRAME RAILS
  2. RAMSEY #9,000 PORTABLE RECEIVER STYLE WINCH
  3. BATTERY CHARGE INDICATOR LOCATED ON DRIVER'S SEAT RISER
  4. PULL STRAPS ON ALL BODY ROLL-UP DOORS
  5. AMDR DUAL LED LIGHT STRIPS IN ALL BODY COMPARTMENTS

CLEAR DOOR WIDTH KEY		CHASSIS DATA	
AMDR ROLL UP DOORS:	-2 1/4"	MAKE	FREIGHTLINER
CORTITE ROLL UP DOORS:	-2 1/2"	MODEL	M2-106
PIERCE DOUBLE LAP DOORS:	-4 1/4"	REV	DATE
PIERCE LIFT-UP LAP DOORS:	-1 1/2"	BY	CH
(EX: 60" F-F - 2 1/4" = 57 3/4" CLEAR) (F-F) = FRAME TO FRAME			

		JOB NO.	31834
		SCALE	DATE
TITLE	ENCORE RESCUE VEHICLE	DRAWN BY	DHE
FOR	FLORENCE FIRE DEPARTMENT	CHECKED BY	AZU
	FLORENCE, SC	SHEET SIZE	SHEET NO.
		D	1 OF 1

ALAN AXSON

DWG NO. 31834AD