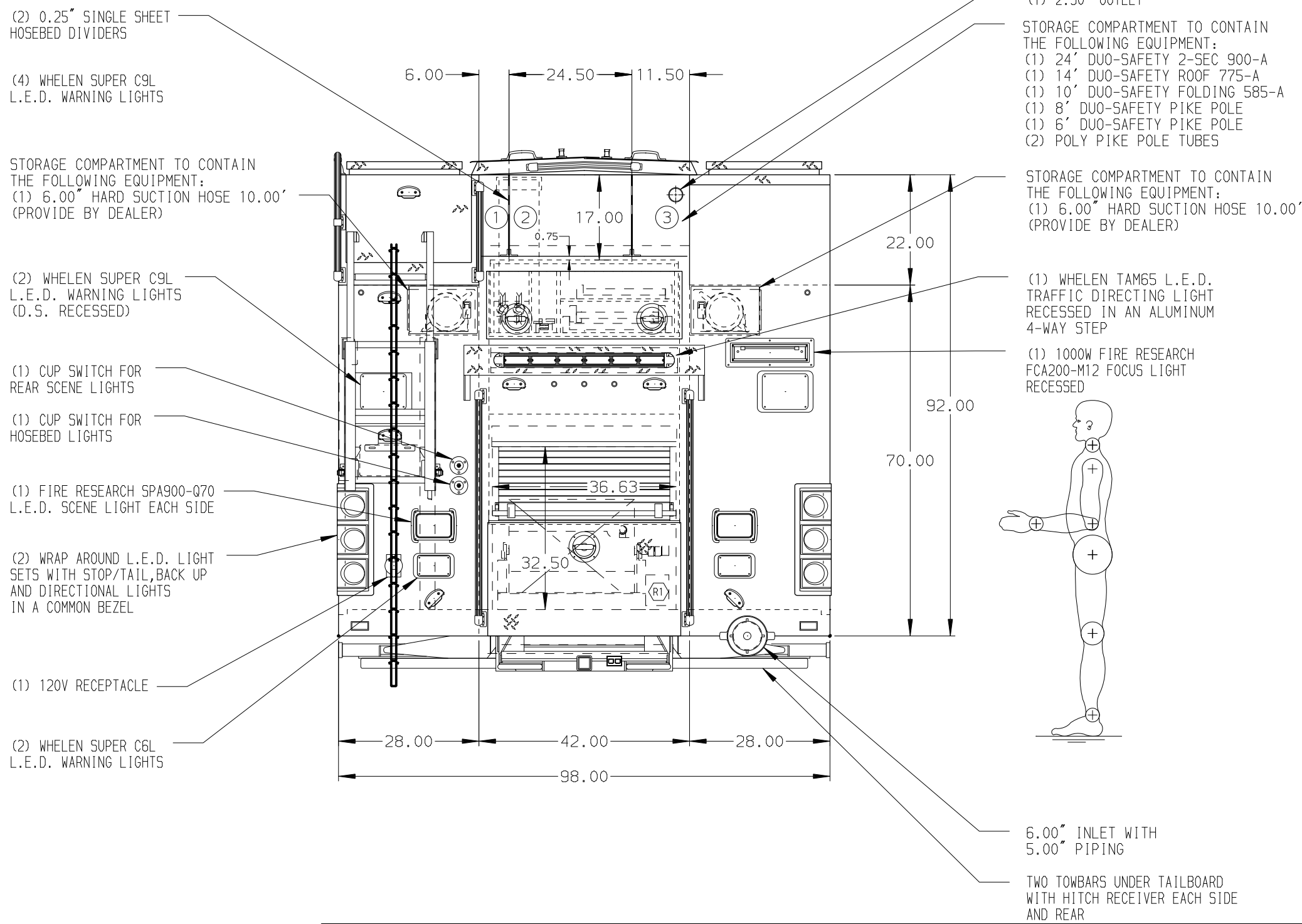


HOSEBED CAPACITIES

- ① OPEN HOSEBED
- ② 500' OF 5.00" D.J. HOSE
- ③ 200' OF 3.00" D.J. HOSE



ALUMINUM BODY    MAXIMUM O.A.L. 418.75"    MAXIMUM O.A.H. 122.00"    SIDE ROLL AND FRONTAL IMPACT PROTECTION

NOTE

DIMENSIONS SHOWN ARE APPROXIMATE AND ARE SUBJECT TO MINOR DEVIATIONS AS MAY OCCUR OR BE NECESSARY IN CONSTRUCTION. MINOR DETAILS NOT SHOWN.

- KUSSMAUL BATTERY CHARGER LOCATED BEHIND DRIVERS SEAT
- BATTERY CHARGE INDICATOR LOCATED ON DRIVER'S SEAT RISER
- SUB-FEED CIRCUIT BREAKER PANEL IN COMPARTMENT D3
- PULL STRAPS FOR DOORS LOCATED ON ALL COMPARTMENT DOORS
- ONE ADJUSTABLE TILTING SLIDE-OUT TRAY IN COMPARTMENT D2, D3, P2, & P4
- ONE FLOOR MOUNTED SLIDE-OUT TRAY WITH 2.00" SIDES IN COMPARTMENT D3, D4, P3, & P4
- ONE FULL WIDTH/DEPTH ADJUSTABLE SHELF LOCATED IN COMPARTMENT D4
- ONE VERTICAL BOLT-IN PARTITION BETWEEN COMPARTMENTS D1-R1 & P1-R1
- ONE SLIDE OUT TOOLBOARD LOCATED IN COMPARTMENT P1 TWO IN COMPARTMENT D1
- TWO ADDITIONAL POLY TRAYS SHIPPED LOOSE

- CIRCUIT BREAKER PANEL IN COMPARTMENT D3
- ONE HANNAY ELECTRIC REWIND CORD REEL WITH 200' OF 10/3 CABLE
- MODEL 1618-17-18 LOCATED IN HATCH ABOVE D2 AND P4
- OUTLET WITH SHUT OFF VALVE LOCATED ON DS PUMP PANEL
- TWO WHELEN PPT1P1 TRIPOD LIGHTS WITH EXTENDABLE POLE TO BE SHIPPED LOOSE
- ONE HANNAY BOOSTER REEL WITH 150' OF 1.00" HOSE (EF32-19-21) LOCATED IN COMPARTMENT R1

				CHASSIS DATA
				MAKE
				MODEL
REV	DATE	BY	CH	ENFORCER

		JOB NO.	31838
TITLE		SCALE	DATE
FOR		DRAWN BY	260CT17
DWG NO.		CHECKED BY	270CT17
		SHEET SIZE	SHEET NO.
		D	1 OF 1

1500-D-800P, 750G WATER W/50G FOAM, 214" PUC RESCUE  
(2) XLAYS, LADDERS BELOW HOSEBED, ONAN GENERATOR  
NORCO FIRE COMPANY  
POTTSTOWN, PENNSYLVANIA

31838AD