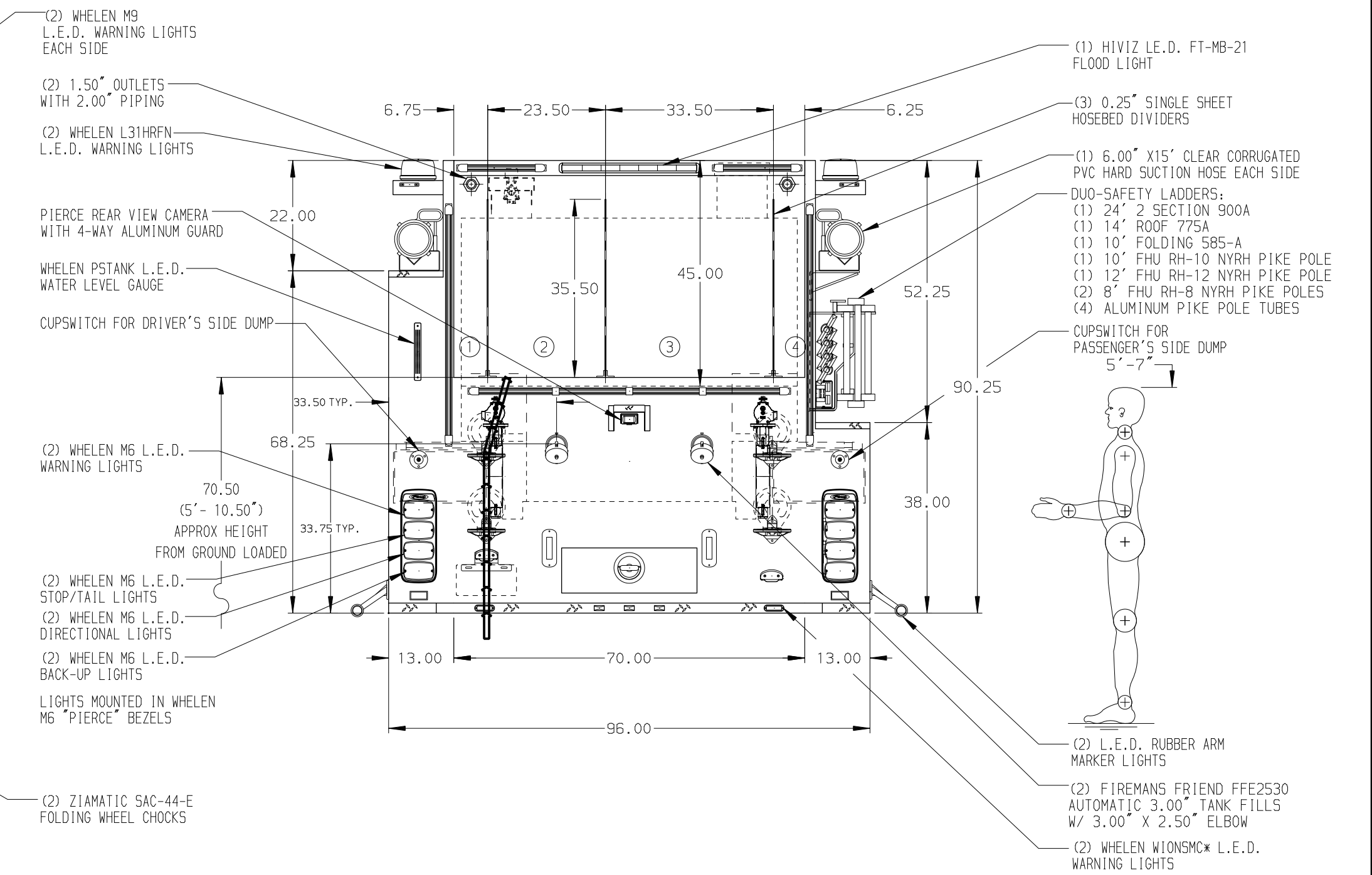


HOSEBED CAPACITIES

①	- 400' OF 1.50" HOSE
②	- 1000' OF 3.00" HOSE
③	- 1000' OF 5.00" HOSE
④	- 250' OF 1.50" HOSE



ALUMINUM BODY

SIDE ROLL AND FRONTAL IMPACT PROTECTION

NOTE
DIMENSIONS SHOWN ARE APPROXIMATE AND ARE SUBJECT TO MINOR DEVIATIONS AS MAY OCCUR OR BE NECESSARY IN CONSTRUCTION. MINOR DETAILS NOT SHOWN.

- AIR INLET WITH DISCONNECT COUPLING UNDER THE D.S. BUMPER
- AIR OUTLET WITH SHUT OFF VALVE ON D.S. PUMP PANEL
- BATTERY CHARGER/AIR COMPRESSOR LOCATED IN D4
- JUMPER STUDS AT DRIVER SIDE CAB STEP
- DUAL L.E.D. LIGHT STRIPS LOCATED IN HOSE BED
- ONE ADJUSTABLE FULL WIDTH/DEPTH SHELF IN D1 AND D4
- ONE ADJUSTABLE SLIDE-OUT TRAY IN D4
- ALUMINUM SWING-OUT TOOLBOARD WITH PAC TRAC IN D2
- ONE FULL WIDTH/DEPTH FLOOR MOUNTED SLIDE-OUT TRAY IN D1
- ONE VERTICAL DIVIDER IN P1
- PAC TRAC ON THE REAR WALL OF D1, D3, AND D4
- STORAGE RACK FOR 4 AIR BOTTLES IN P1
- (1) HANNAY MODEL SBFE24-28-29-12 BOOSTER REEL WITH CAPACITY FOR 150' OF 1.00" REELTEX HOSE AND 1.50" PIPING IN THE D.S. CARGO AREA
- CIRCUIT BREAKER PANEL IN D4
- ONE HANNAY ELECTRIC REWIND CORD REEL MODEL 1618-17-18 WITH 200' OF 10/4 CABLE IN P.S. OF THE CARGO AREA
- ONE ADJUSTABLE FULL WIDTH/DEPTH SHELF IN D1 AND D4
- 120V DUPLEX RECEPTACLE TWO IN D1 AND ONE IN D4, P1, AND BEHIND THE DRIVER'S SEAT

REV	DATE	BY	CH	ENFORCER
16MAR18	LST	CSH		CHASSIS DATA
19FEB18	LST	CSH		MAKE
16FEB18	LST	CSH		PIERCE
08DEC17	LST	CDU		MODEL

		JOB NO.	31957
		SCALE	1:24
TITLE 1500-D-2000P W/30G FOAM CELL, 211" TANKER, (3)XLYS (2)HSH'S, DELUGE, GENERATOR, HUSKY 3, CORD REEL		DRAWN BY	LST
		CHECKED BY	CDU
FOR BERLIN FIRE COMPANY, INC BERLIN, MARYLAND		DWG NO.	31957AD
		SHEET NO.	1 OF 1