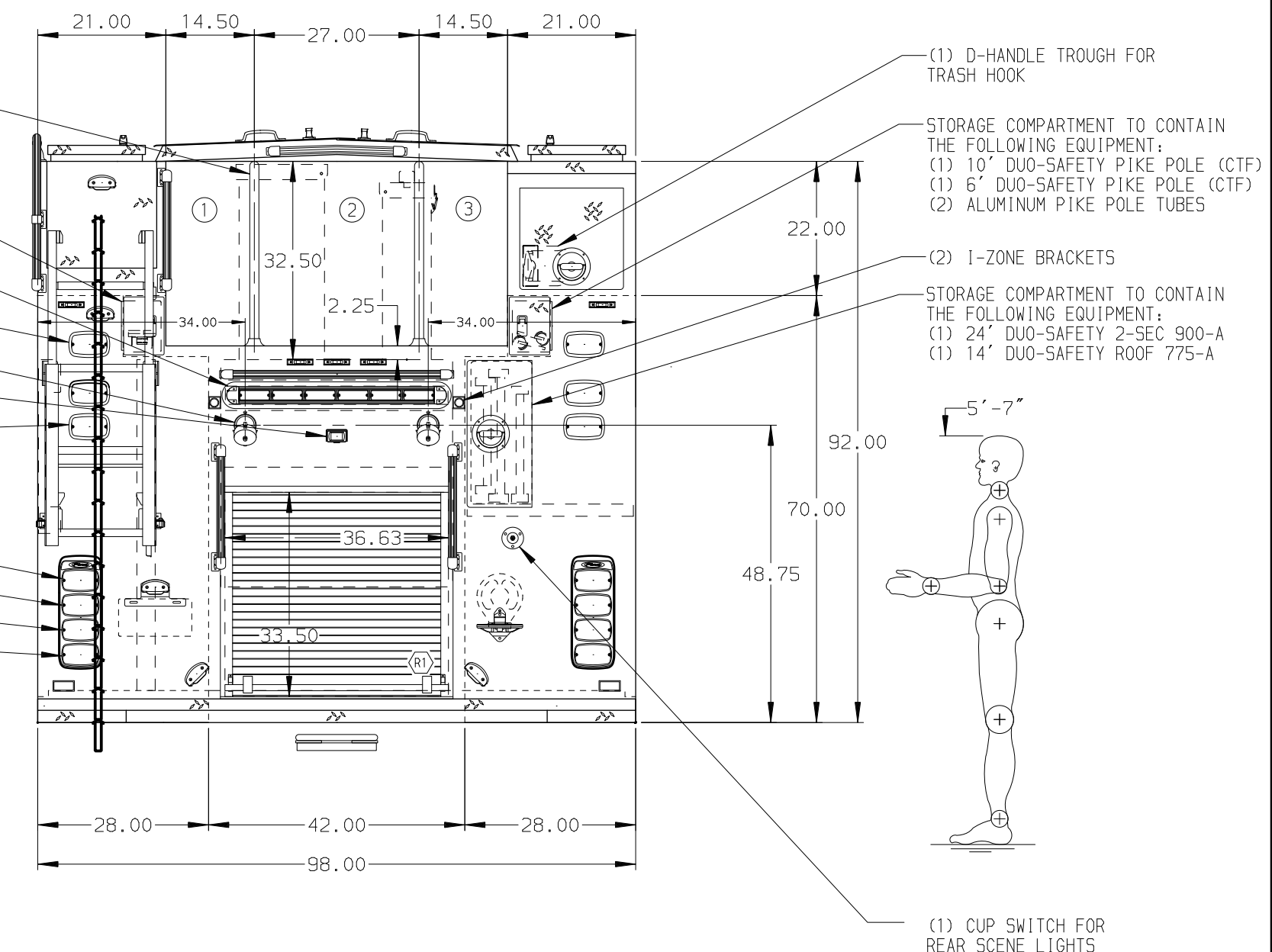
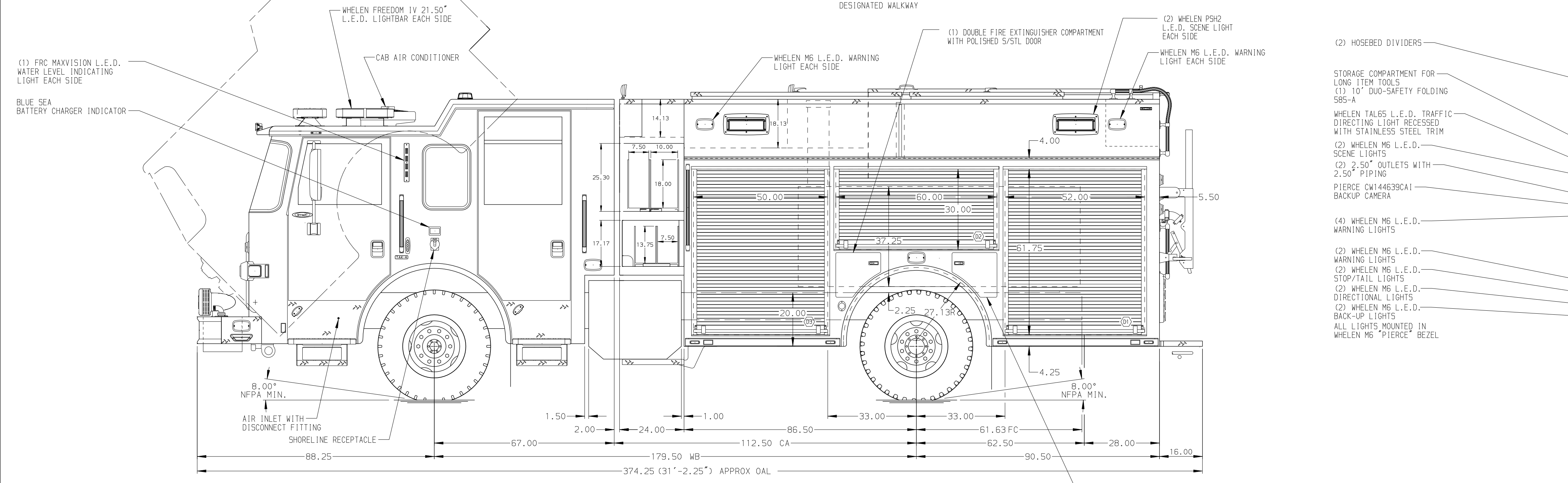


HOSEBED CAPACITIES

①	400' OF 2.50" HOSE
②	800' OF 4.00" HOSE
③	400' OF 2.50" HOSE



ALUMINUM BODY

MAXIMUM O.A.H 126.00"

NOTE
DIMENSIONS SHOWN ARE APPROXIMATE AND ARE SUBJECT TO MINOR DEVIATIONS AS MAY OCCUR OR BE NECESSARY IN CONSTRUCTION. MINOR DETAILS NOT SHOWN.

1. ELECTRIC DOOR LOCKS ON COMPARTMENT D1, D2, P1, P2, P3, & R1
2. D-HANDLE TROUGH FOR TRASH HOOK IN P3 HATCH COMPARTMENT
3. BATTERY CHARGER LOCATED IN DS HATCH COMPARTMENT
4. ONE FULL WIDTH/DEPTH ADJUSTABLE SHELF WITH SIDES IN COMPARTMENT-D2,P2, P3 & R1
5. TWO IN D1, D3 THREE IN P1
6. ONE ALUMINUM SLIDE-OUT TOOLBOARD WITH PAC-TRAC IN COMPARTMENT D1
7. ONE PARTITION BETWEEN COMPARTMENTS-D1/R1 AND P1/R1
8. ONE SPECIAL HEIGHT VERTICAL PARTITION IN COMPARTMENT-D1,D2,D3, & P3

REV	DATE	BY	CH	ARROW	XT
04APR18	MMF	RWA			CHASSIS DATA
16MAR18	MMF	RWA			MAKE
22FEB18	MMF	RWA			PIERCE
08DEC17	CCA	CDU			MODEL

	JOB NO.	31964				
	SCALE	1:24				
Pierce MANUFACTURING INC.	TITLE	1500-D-500P W/30 GAL FOAM CELL, DELUGE, HUSKY 3				
	FOR	HUNTINGTON BEACH FIRE DEPARTMENT HUNTINGTON BEACH, CA				
<table border="1"> <tr><td>DWG NO.</td><td>31964AD</td></tr> <tr><td>SHEET NO.</td><td>1 OF 1</td></tr> </table>	DWG NO.	31964AD	SHEET NO.	1 OF 1	DRAWN BY	BST
	DWG NO.	31964AD				
SHEET NO.	1 OF 1					
CHECKED BY	CCA	DATE	29NOV17			
SHEET SIZE	D	SHEET NO.	04DEC17			