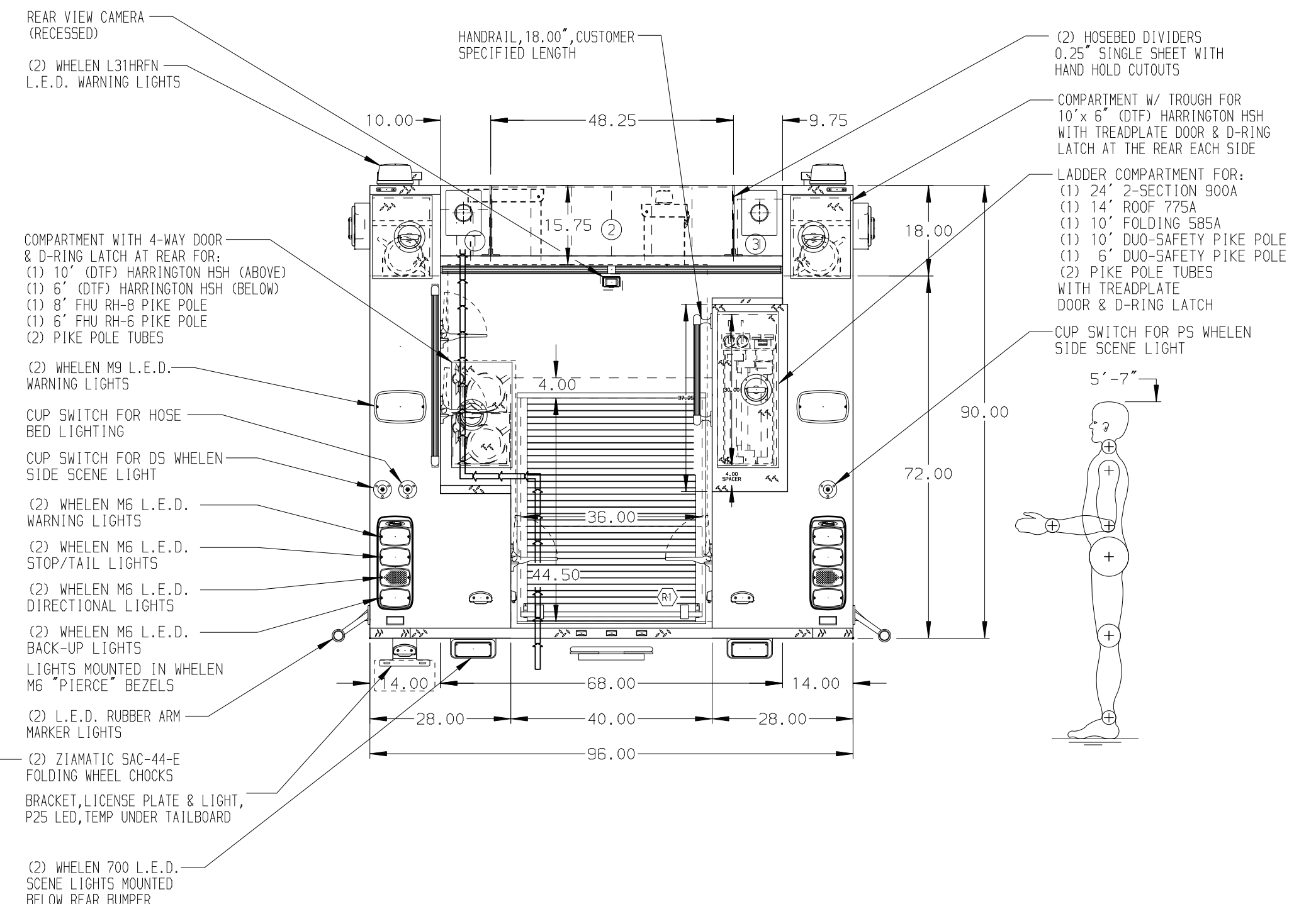
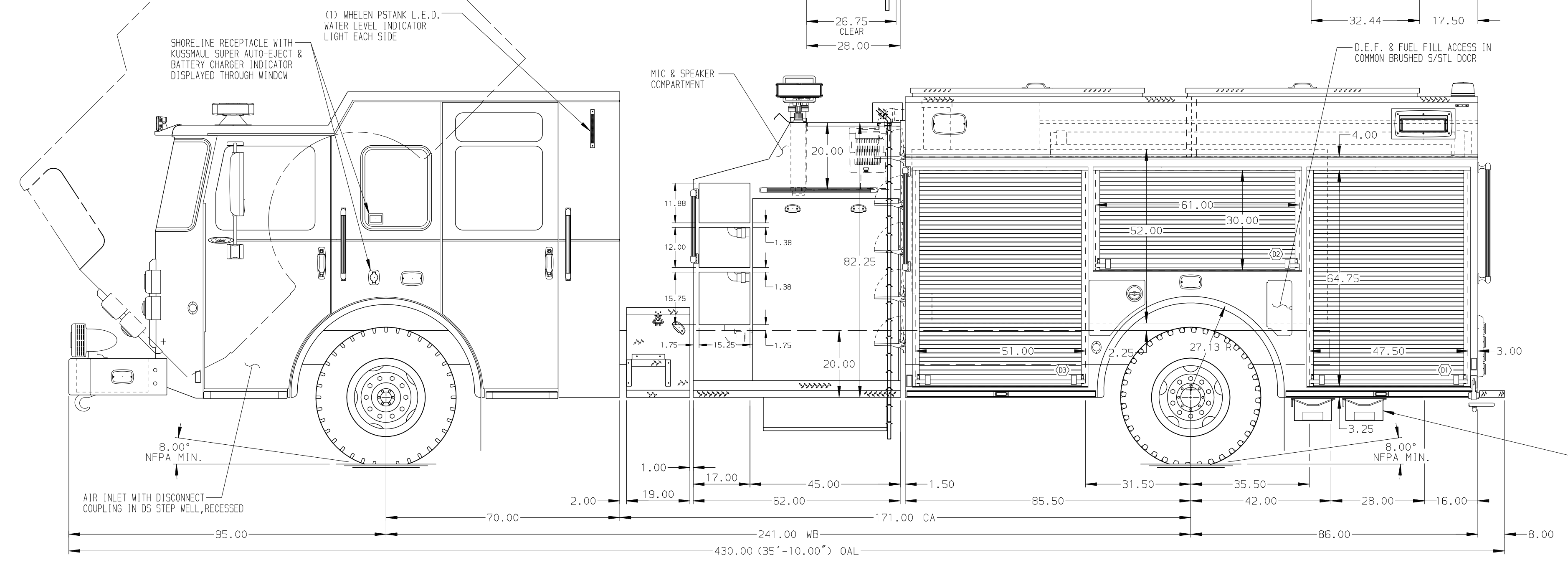


- HOSEBED CAPACITIES
- ① 400' OF 1.75" D.J. POLY HOSE
 - ② 1200' OF 5.00" D.J. POLY HOSE
 - ③ 300' OF 2.50" D.J. POLY HOSE



ALUMINUM BODY

SIDE ROLL AND FRONTAL IMPACT PROTECTION

NOTE
DIMENSIONS SHOWN ARE APPROXIMATE AND ARE SUBJECT TO MINOR DEVIATIONS AS MAY OCCUR OR BE NECESSARY IN CONSTRUCTION. MINOR DETAILS NOT SHOWN.

CHASSIS DATA		TITLE	1500-D-1000 GAL POLY W/20 GAL FOAM 171" BODY
MAKE		FOR	FH FRONT & REAR FDLER, LDERS BTWN TANK & SS, GENERATOR
PIERCE		FOR	COLDWATER FIRE DEPARTMENT
MODEL		DWG NO.	31976AD
20APR18	RWI	JLA	
29MAR18	JLA	GSC	
REV	DATE	BY	CH
SABER FR			

Pierce MANUFACTURING INC.

JOB NO. 31976

SCALE 1:24 DATE

DRAWN BY GVH 20FEB18

CHECKED BY NPA 21FEB18

SHEET SIZE D SHEET NO. 1 OF 1