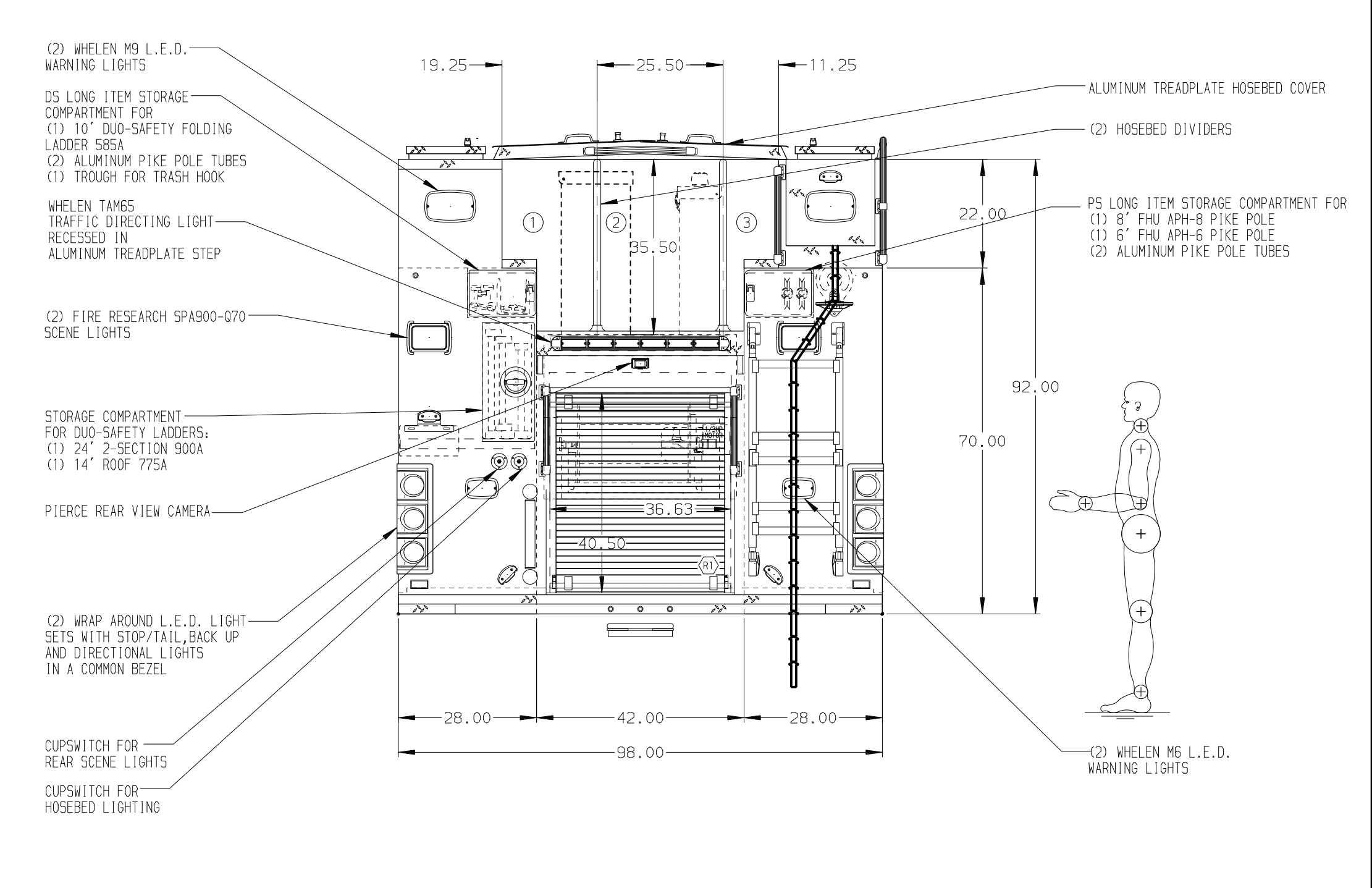
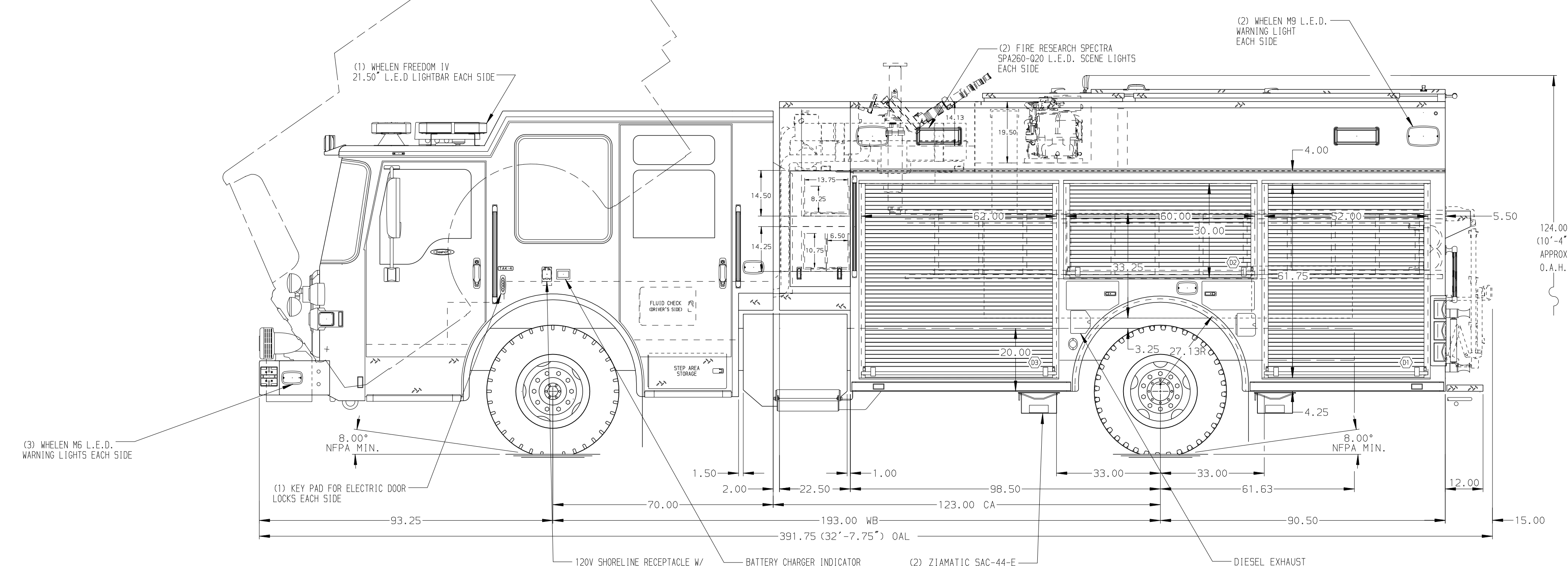


- HOSEBED CAPACITIES
- ① 600' OF 3.00" HOSE
 - ② 1000' OF 5.00" HOSE
 - ③ 200' OF 2.50" HOSE



ALUMINUM BODY

MAXIMUM O.A.L. 410.00"

SIDE ROLL AND FRONTAL IMPACT PROTECTION

NOTE
 DIMENSIONS SHOWN ARE APPROXIMATE AND ARE SUBJECT TO MINOR DEVIATIONS AS MAY OCCUR OR BE NECESSARY IN CONSTRUCTION.
 MINOR DETAILS NOT SHOWN.

1. ALUMINUM TREADPLATE EXTERIOR REAR WALL OF CAB
2. ADJUSTABLE FULL WIDTH/FULL DEPTH SHELVES TWO IN D1 AND P3 AND ONE IN P1
3. ONE ADJUSTABLE TILTING SLIDE-OUT TRAY IN P1, P2, AND P3
4. FLOOR MOUNTED SLIDE-OUT TRAYS TWO IN P3 AND ONE IN D1, R1, AND P1
5. ONE BOLT IN PARTITION HATCH COMPARTMENT BEHIND THE BATTERY CHARGER IN THE D.S. FRONT HATCH COMPARTMENT
6. ALUMINUM PEGBOARD WITH TRACKS ON THE REAR WALL OF COMPARTMENTS D2 AND D3
7. 140 CFM COMPRESSED AIR FOM SYSTEM
8. PARTITION BETWEEN COMPARTMENTS D1/R1 AND P1/R1
9. WHELEN HOWLER AUXILIARY SPEAKER SYSTEM
10. ONE VERTICAL PARTITION IN P1 AND P3

11. BATTERY CHARGER LOCATED IN THE FRONT OF THE D.S. HATCH COMPARTMENT
12. DUAL L.E.D. LIGHT STRIPS LOCATED ON EACH SIDE OF HOSEBED
13. HUSKY 12 FOAM SYSTEM
14. ONE HANNAY SBEF4130-17-18 ELECTRIC REWIND BOOSTER REEL WITH A CAPACITY FOR 150' OF 0.75" HOSE IN COMPARTMENT-R1
15. ALUMINUM TOOLBOARD ADDED TO SLIDE-OUT TRAY IN P3
16. ALUMINUM SWING-OUT TOOLBOARD IN D2
17. TWO DRAWER CTECH DRAWER ASSEMBLY IN D3
18. MODEL 13 LITTLE GIANT LADDER (CTF) IN P2
19. HORIZONTAL PARTITION IN D3
20. ALUMINUM PEGBOARD WITH TRACKS ON THE SIDEWALL OF D3

REV	DATE	BY	CH	DASH CF
24MAR18	LST	CHR	MAKE	
06MAR18	LST	CHR	PIERCE	
12JAN18	LST	CDU	MODEL	

		JOB NO.	32012	
		SCALE	1:24	
TITLE 1500-D-525P, 500 GAL OF WATER W/ 25 GAL FOAM CELL 189" PUC RESCUE, LADDERS THRU BODY, (3) X-LAYS FOR WILLIAMSON COUNTY ESD #2- SAM BASS FIRE DEPARTMENT ROUND ROCK, TEXAS	DRAWN BY	LST	03JAN18	
	CHECKED BY	CDU	05JAN18	
DWG NO.	32012AD		SHEET NO.	1 OF 1