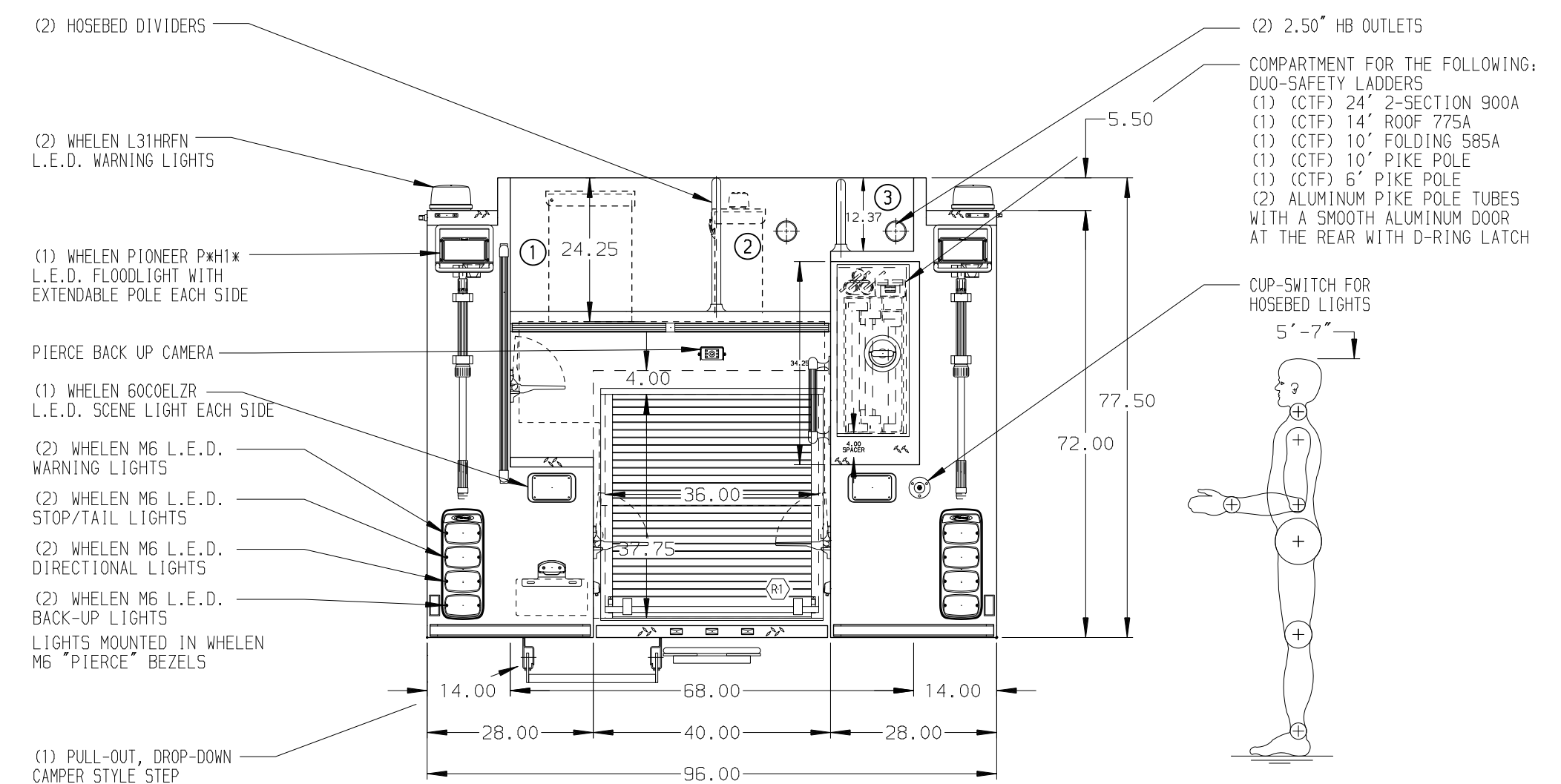


- HOSEBED CAPACITIES
- ① 1000' OF 5.00" D.J. HOSE
 - ② 600' OF 3.00" D.J. HOSE
 - ③ 300' OF 1.75" D.J. HOSE



GALVANNEAL

MAXIMUM O.A.H. 112.00"

NOTE
DIMENSIONS SHOWN ARE APPROXIMATE AND ARE SUBJECT TO MINOR DEVIATIONS AS MAY OCCUR OR BE NECESSARY IN CONSTRUCTION.
MINOR DETAILS NOT SHOWN.

- 1. AIR INLET WITH DISCONNECT COUPLING LOCATED IN DRIVER'S SIDE LOWER STEP WELL AREA REARWARD
- 2. SHORELINE RECEPTACLE WITH KUSSMAUL SUPER AUTO-EJECT LOCATED ON DRIVER'S SIDE PUMP PANEL
- 3. BATTERY CHARGE INDICATOR LOCATED IN COMPARTMENT D3
- 4. BATTERY CHARGE INDICATOR LOCATED ON DRIVER'S SEAT RISER
- 5. DRIP PAN GUARD FOR ALL ROLL-UP DOORS
- 6. ONE ADJUSTABLE FULL WIDTH/DEPTH SHELF IN COMPARTMENT P1 & R1, TWO IN D1, D3 & P3
- 7. PARTITION BETWEEN COMPARTMENTS D1/R1 AND P1/R1
- 8. ALUMINUM PEGBOARD WITH TRACKS ON THE REAR WALL OF COMPARTMENT D2 & P2

		JOB NO.	32085
		SCALE	1:24
		DATE	
		DRAWN BY	AMI
		CHECKED BY	CDU
		SHEET SIZE	D
		SHEET NO.	1 OF 1

TITLE	1500-D-500P W/20G FOAM CELL, 152" PUMPER BODY, HUSKY 3
FOR	(2) SPEEDLAYS, DELUGE, LDRS BETWEEN TANK & SIDE SHEET
DWG NO.	32085AD

CHASSIS DATA	MAKE	PIERCE	MODEL	ENFORCER
31MAR18	AMI	MSA		
14MAR18	AMI	MSA		
15FEB18	AMI	CDU		
REV	DATE	BY	CH	ENFORCER