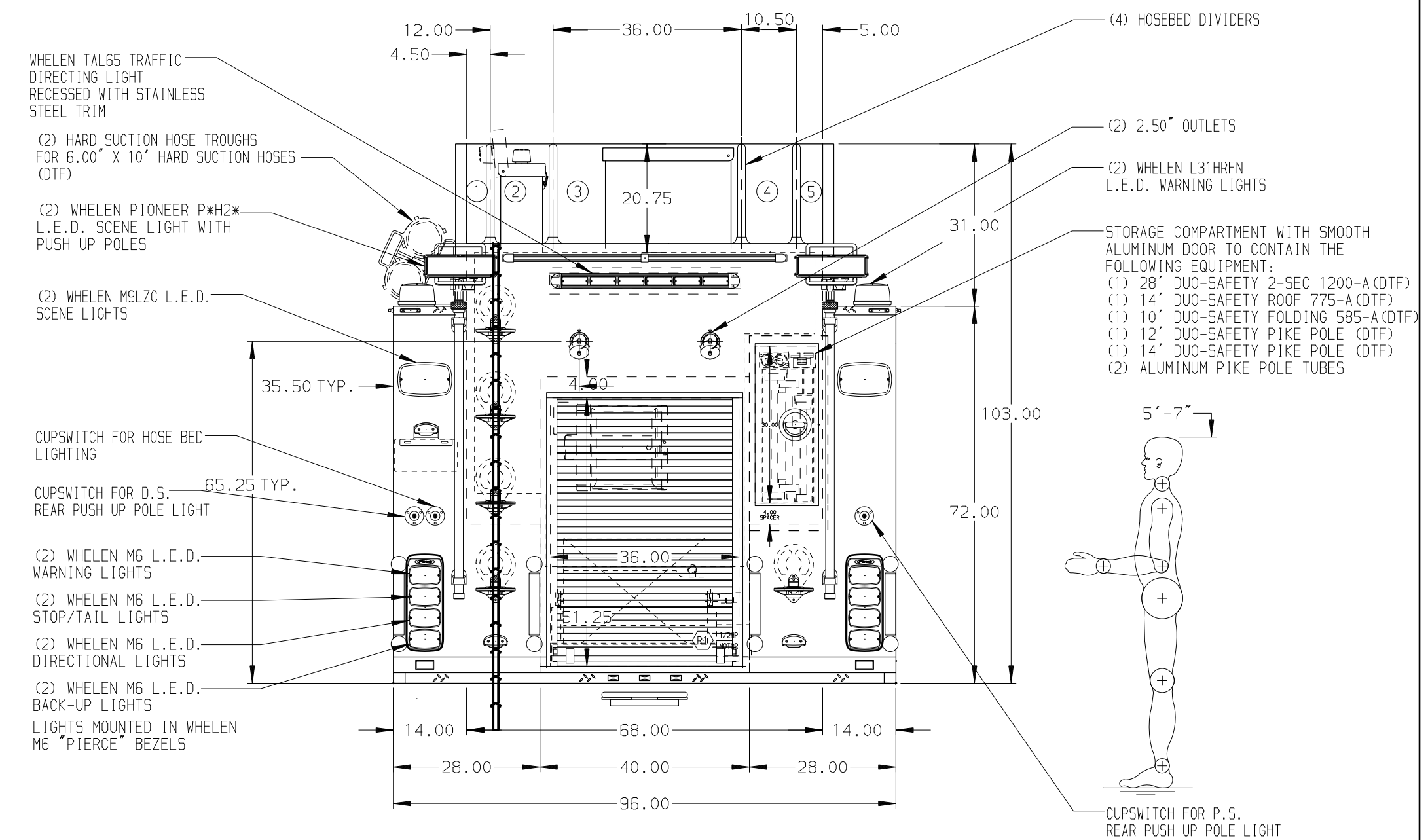
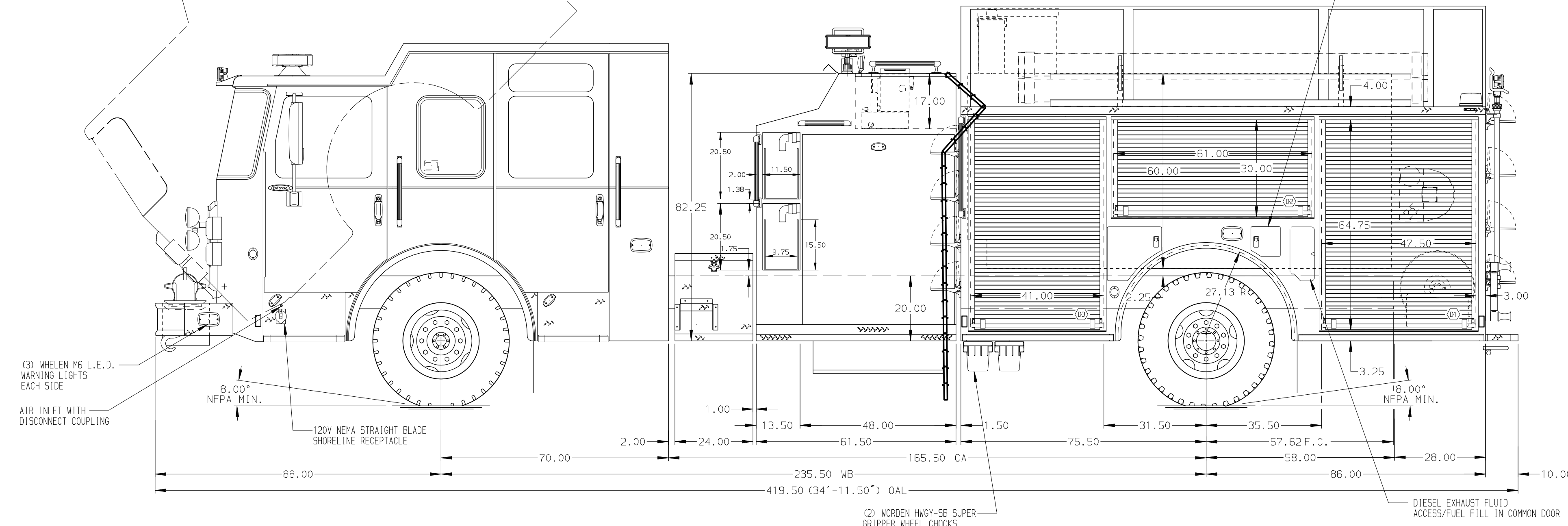


- HOSEBED CAPACITIES
- ① 200' OF 1.75" HOSE
 - ② 400' OF 2.50" HOSE
 - ③ 1000' OF 5.00" HOSE
 - ④ 600' OF 2.50" HOSE
 - ⑤ 200' OF 1.75" HOSE



ALUMINUM BODY

NOTE
DIMENSIONS SHOWN ARE APPROXIMATE AND ARE SUBJECT TO MINOR DEVIATIONS AS MAY OCCUR OR BE NECESSARY IN CONSTRUCTION. MINOR DETAILS NOT SHOWN.

1. BATTERY CHARGER LOCATED IN D3
2. BATTERY CHARGER INDICATOR BEHIND DRIVER'S SEAT DISPLAYED THROUGH WINDOW
3. DUAL L.E.D. LIGHT STRIPS LOCATED IN HOSE BED
4. ADJUSTABLE FULL WIDTH/DEPTH SHELVES TWO IN D3 AND ONE IN D1, R1, P1, AND P3
5. ONE FLOOR MOUNTED SLIDE-OUT TRAY IN R1
6. CTECH DRAINER ASSEMBLY IN D3
7. TWO 4" DUO SAFETY D-HANDLE PIKE POLES (DTF) WITH PAC HANDLELOK # 1004 MOUNTING BRACKET IN CREW CAB
8. TWO ADDITIONAL POLY TRAYS SHIPPED LOOSE
9. HANNY BOOSTER REEL MODEL SBEP 34-23-24 WITH CAPACITY FOR 200' OF 1.00" BOOSTER HOSE LOCATED IN R1
10. ONE AKRON MODEL ERWC-15-10 ELECTRIC REWIND CORD REEL WITH 200' OF 10/3 CABLE IN R1
11. (1) 120V 7-PLACE RECEPTACLE STRIP BEHIND THE DRIVER'S SEAT
12. (1) 120V 7-PLACE RECEPTACLE STRIP IN D3
13. (1) 120V DUPLEX RECEPTACLE IN R1

REV	DATE	BY	CH	ENFORCER
26APR18	LST	PJP		PIERCE
16MAR18	LST	AZA		MODEL

		JOB NO.	32250
		SCALE	1:24
CHASSIS DATA MAKE MODEL ENFORCER	TITLE	1250-D-1520P, 1500 GAL OF WATER W/ 20 GAL FOAM CELL 161" FH FDLER, LDRS. BTWN TANK & S. SHEET, DELUGE	DATE
	FOR	DALE FIRE DEPARTMENT DALE, WISCONSIN	01MAR18
DWG NO.	CHECKED BY	AZA	05MAR18
	SHEET SIZE	D	SHEET NO. 1 OF 1

32250AD